

PRESTIGE
FINSBURY
PARK-HYDE

A LIVING EXPERIENCE LIKE NO OTHER

B A G A L U R

RERA: PRM/KA/RERA/1251/472/PR/191206/003055



Aerial View



Write your own story to an unmatched living experience.

A wonderful enclave of exclusive homes. The perfect address for those who wish to beat the daily commute to work and yet be insulated from the bustle of urban life.

Prestige Finsbury Park is a large township destination of 25 acres situated adjacent to the aerotropolis within the IT/ Aerospace and Hardware Park being developed by the KIADB, which will be the hub in the future for the IT and Aerospace sectors. The Park also has a limited allotment for residential developments within which Prestige Finsbury Park is located. Well reputed schools and colleges, healthcare facilities, as well as shopping and entertainment hubs, are all within easy reach.

Prestige Finsbury Park consists of two developments – Prestige Finsbury Park - Hyde, spread over 15 acres, and Prestige Finsbury Park Regent, spanning 10 acres. They are independently located beside each other and each has its own identity, approvals, amenities and facilities.

Prestige Finsbury Park - Hyde comprises a total of 2092 aesthetically designed one and two bedroom homes set in 12 towers that rise up to 22 floors. Thoughtfully planned, they are designed to maximize natural light and ventilation, and facilitate comfortable living.

Enjoy the luxury of a fully equipped clubhouse with the gamut of recreational amenities including a swimming pool, gym, health club, indoor badminton court, party halls, billiards, table tennis, board games, reading room, and provision for a crèche. There is also provision for a convenience store, pharmacy and doctor's clinic, a mini theatre and space for an ATM.

The open landscape also has an outdoor games area, and elders' park, a children's play area and a pet park.

All ensuring that every need of the neighborhood is met.

Go ahead, turn the page and explore your home at Prestige Finsbury Park - Hyde. Discover a quality of life that is truly unique.



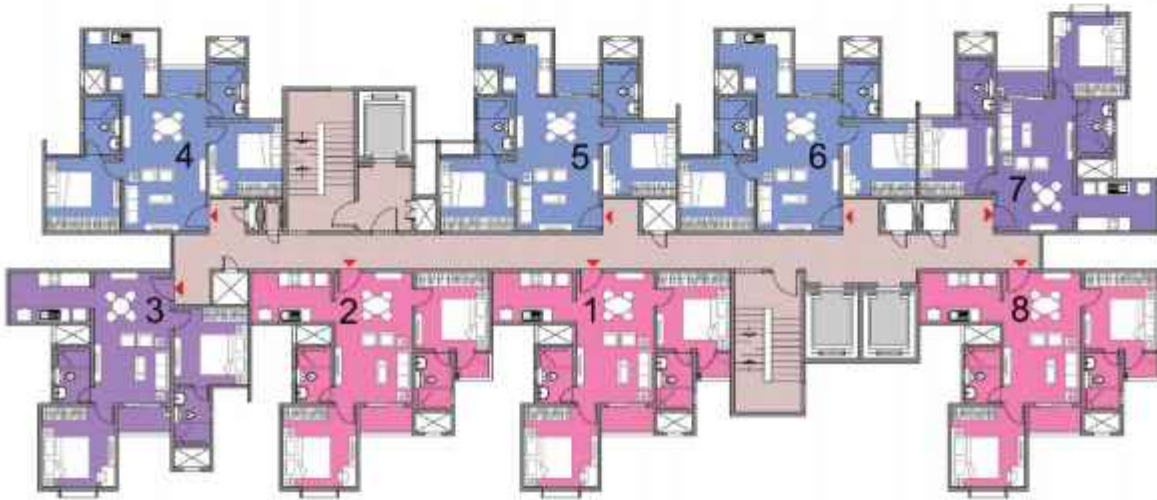


Numbering Plan





Cluster Plan - Building 1 Tower - 1



BUILDING - 1			TOWER-1		SALEABLE AREA		CARPET AREA	
COLOR	Unit type	No. of Bed	(sqm)	(sqft)	(sqm)	(sqft)	(sqm)	(sqft)
1	B 13	2 BED	92.81	999	58.55	630		
2	B 13	2 BED	92.81	999	58.55	630		
3	B 7	2 BED	90.77	977	58.3	628		
4	B 4	2 BED	90.21	971	59.01	635		
5	B 4	2 BED	90.21	971	59.01	635		
6	B 4	2 BED	90.21	971	59.01	635		
7	B 6	2 BED	90.77	977	58.3	628		
8	B 13	2 BED	92.81	999	58.55	630		





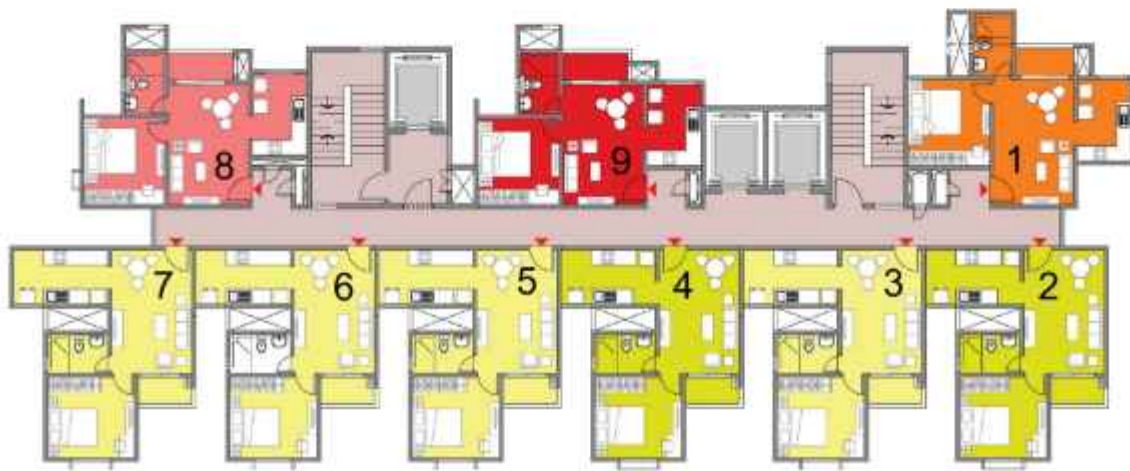
Cluster Plan - Building 1 Tower - 2



BUILDING - 1		TOWER-2	SALEABLE AREA		CARPET AREA	
COLOUR	Unit type	No. of Bed	(sqm)	(sqft)	(sqm)	(sqft)
1	A 7	1 BED	50.00	646	39.76	428
2	A 7	1 BED	50.00	646	39.76	428
3	A 11	1 BED	50.63	652	39.76	428
4	A 4	1 BED	50.00	646	39.76	428
5	A 10	1 BED	50.39	650	40.08	431
6	A 10	1 BED	50.39	650	40.08	431
7	A 10	1 BED	50.39	650	40.08	431
8	A 4	1 BED	50.00	646	39.76	428
9	A 3	1 BED	50.00	646	39.76	428
10	A 6	1 BED	50.00	646	39.76	428



Cluster Plan - Building 1 Tower - 3



BUILDING - 1		TOWER-3	SALEABLE AREA		CARPET AREA	
COLOUR	Unit type	No. of Bed	(sqm)	(sqft)	(sqm)	(sqft)
1	A 5	1 BED	60.00	646	39.11	421
2	A 9	1 BED	60.00	646	39.76	428
3	A 8	1 BED	60.00	646	39.76	428
4	A 9	1 BED	60.00	646	39.76	428
5	A 8	1 BED	60.00	646	39.76	428
6	A 8	1 BED	60.00	646	39.76	428
7	A 8	1 BED	60.00	646	39.76	428
8	A 1	1 BED	59.15	636	38.65	416
9	A 2	1 BED	59.29	636	38.72	417





Cluster Plan - Building 2 Tower - 4

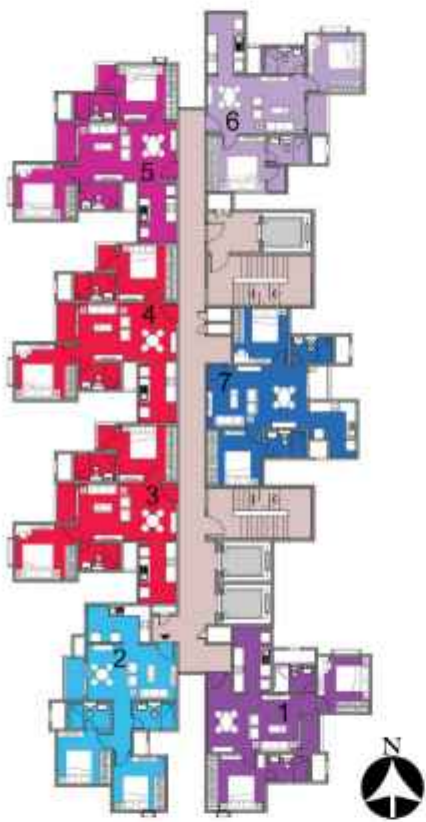


BUILDING - 2		TOWER-4	SALEABLE AREA		CARPET AREA	
COLOUR	Unit type	No. of Bed	(sqm)	(sq)	(sqm)	(sq)
1	B 6	2 BED	90.77	977	58.3	628
2	B 13	2 BED	92.81	999	58.55	630
3	B 7	2 BED	90.77	977	58.3	628
4	B 13	2 BED	92.81	999	58.55	630
5	B 11	2 BED	92.81	999	58.55	630
6	B 4	2 BED	90.21	971	59.01	635
7	B 4	2 BED	90.21	971	59.01	635
8	B 6	2 BED	90.77	977	58.3	628





Cluster Plan - Building 2 Tower - 5



BUILDING - 2		TOWER-5	SALEABLE AREA		CARPET AREA	
COLOR	Unit type	No. of Bed	(sqm)	(sqft)	(sqm)	(sqft)
1	8 8	2 BED	91.39	984	59.6	642
2	8 2	2 BED	88.66	955	57.04	614
3	8 14	2 BED	92.81	999	58.55	630
4	8 14	2 BED	92.81	999	58.55	630
5	8 12	2 BED	92.81	999	58.55	630
6	8 10	2 BED	92.38	994	58.07	625
7	9 3	2 BED	90.21	971	59.01	635

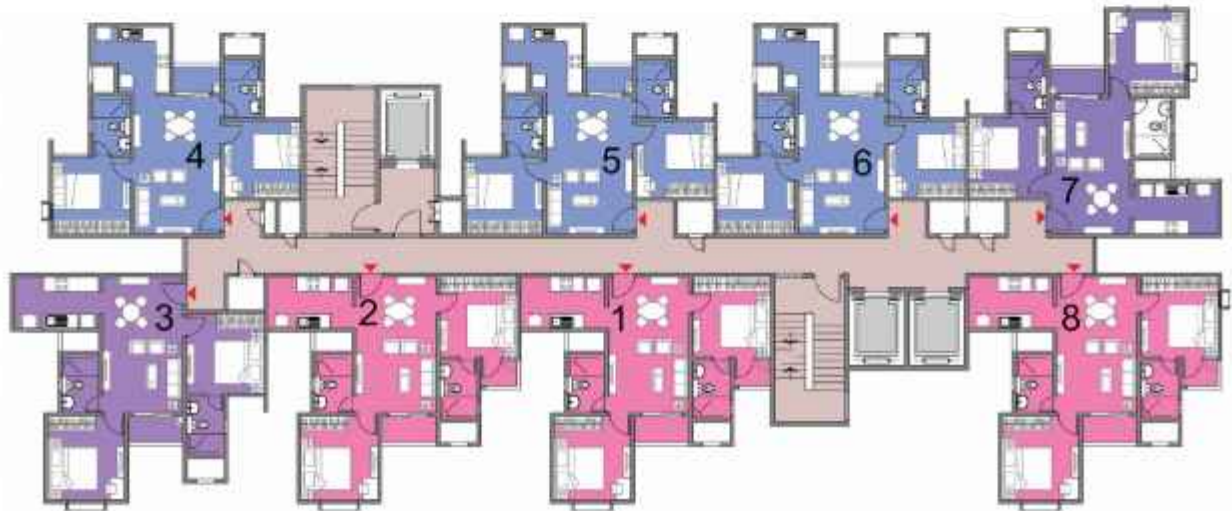


Exterior View - Central Courtyard





Cluster Plan - Building 2 Tower - 6



BUILDING - 2			TOWER-6		SALEABLE AREA		CARPET AREA	
COLOUR	Unit type	No. of Bed	(sqm)	(sqft)	(sqm)	(sqft)	(sqm)	(sqft)
1	B 13	2 BED	92.81	999	58.55	630		
2	B 13	2 BED	92.81	999	58.55	630		
3	B 7	2 BED	90.77	977	58.3	628		
4	B 4	2 BED	90.21	971	59.01	635		
5	B 4	2 BED	90.21	971	59.01	635		
6	B 4	2 BED	90.21	971	59.01	635		
7	B 6	2 BED	90.77	977	58.3	628		
8	B 13	2 BED	92.81	999	58.55	630		





Cluster Plan - Building 3A Tower - 7



BUILDING - 3A			TOWER-7		SALEABLE AREA		CARPET AREA	
COLOUR	Unit type	No. of Bed	(sqm)	(sqft)	(sqm)	(sqft)	(sqm)	(sqft)
1	B 13	2 BED	92.81	999	58.55	630		
2	B 13	2 BED	92.81	999	58.55	630		
3	B 7	2 BED	90.77	977	58.3	628		
4	B 4	2 BED	90.21	971	59.01	635		
5	B 4	2 BED	90.21	971	59.01	635		
6	B 4	2 BED	90.21	971	59.01	635		
7	B 6	2 BED	90.77	977	58.3	628		
8	B 13	2 BED	92.81	999	58.55	630		





Cluster Plan Building 3A Tower - 8



BUILDING - 3		TOWER-8	SALEABLE AREA		CARPET AREA	
COLOUR	Unit Type	No. of Bed	(sqm)	(sqft)	(sqm)	(sqft)
1	B 13	2 BED	92.81	999	58.55	630
2	B 11	2 BED	92.81	999	58.55	630
3	B 5	2 BED	90.77	977	58.3	628
4	B 4	2 BED	90.21	971	59.01	635
5	B 4	2 BED	90.21	971	59.01	635
6	B 4	2 BED	90.21	971	59.01	635
7	B 6	2 BED	90.77	977	58.3	628
8	B 13	2 BED	92.81	999	58.55	630





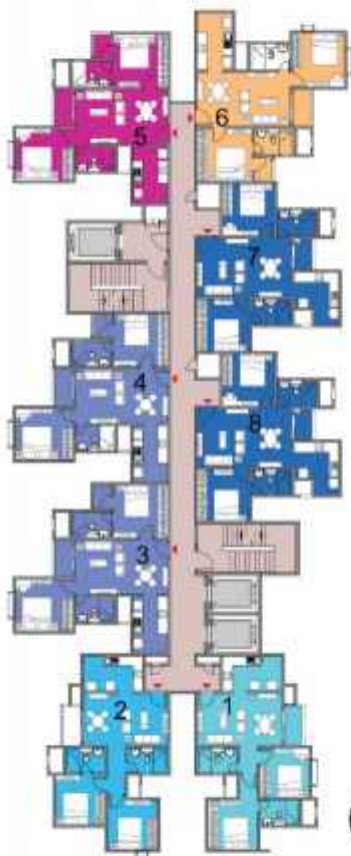
Cluster Plan - Building 3A Tower - 9



BUILDING - 3A			TOWER-9		SALABLE AREA		CARPET AREA	
COLOUR	UNIT Type	No. of Bed	(sqm)	(sqft)	(sqm)	(sqft)	(sqm)	(sqft)
1	B 1	2 BED	88.66	955	57.04	614		
2	B 2	2 BED	88.66	955	57.04	614		
3	B 14	2 BED	92.81	999	58.55	630		
4	B 14	2 BED	92.81	999	58.55	630		
5	B 12	2 BED	92.81	999	58.55	630		
6	B 9	2 BED	92.38	984	58.07	625		
7	B 3	2 BED	90.21	971	59.01	635		
8	B 3	2 BED	90.21	971	59.01	635		



Cluster Plan - Building 3B Tower - 10



BUILDING - 3B		TOWER-10	SALEABLE AREA		CARPET AREA	
COLOR	Unit type	No. of Bed	(sqm)	(sqft)	(sqm)	(sqft)
1	B 1	2 BED	88.66	955	57.04	614
2	B 2	2 BED	88.66	955	57.04	614
3	B 14	2 BED	92.81	999	58.55	630
4	B 14	2 BED	92.81	999	58.55	630
5	B 12	2 BED	92.81	999	58.55	630
6	B 9	2 BED	92.38	994	58.07	625
7	B 3	2 BED	90.21	971	59.01	635
8	B 3	2 BED	90.21	971	59.01	635



Cluster Plan - Building 3B Tower - 11



BUILDING - 3B		TOWER-11	SALEABLE AREA		CARPET AREA	
COLOR	Unit type	No. of Bed	(sqm)	(ft ²)	(sqm)	(ft ²)
1	B 6	2 BED	90.77	977	58.3	628
2	B 13	2 BED	92.81	999	58.55	630
3	B 7	2 BED	90.77	977	58.3	628
4	B 13	2 BED	92.81	999	58.55	630
5	B 11	2 BED	92.81	999	58.55	630
6	B 4	2 BED	90.21	971	59.01	635
7	B 4	2 BED	90.21	971	59.01	635
8	B 6	2 BED	90.77	977	58.3	628





Lobby





Cluster Plan - Building 3B Tower - 12



BUILDING - 3B		TOWER-12	SALEABLE AREA		CARPET AREA	
COLOUR	Unit type	No. of bed	(sqm)	(sqft)	(sqm)	(sqft)
1	B 6	2 BED	90.77	977	58.3	628
2	B 13	2 BED	92.81	999	58.55	630
3	B 7	2 BED	90.77	977	58.3	628
4	B 13	2 BED	92.81	999	58.55	630
5	B 11	2 BED	92.81	999	58.55	630
6	B 4	2 BED	90.21	971	59.01	635
7	B 4	2 BED	90.21	971	59.01	635
8	B 6	2 BED	90.77	977	58.3	628





Unit Type - A1

1 Bed



Building-1, Tower-3
 Unit 8 - 1st Floor To 21st Floor

TYPE - A1 (1 BED)

SALE AREA	535 SFT	59.16 Sqm
CARPET AREA	416 SFT	38.66 Sqm



Unit Type - A2

1 Bed



Building-1, Tower-3
Unit 9 - Ground, 1st Floor To 19th & 21st Floor

TYPE - A2 (1 BED)

SALE AREA	639 SFT	59.29 Sqm
CARPET AREA	417 SFT	38.72 Sqm



Unit Type - A3

1 Bed



Building-1, Tower-2
Unit 9 - 1st Floor To 21st Floor

TYPE - A3 (1 BED)

SALE AREA	645 Sft	60.00 Sqn
CARPET AREA	428 Sft	39.76 Sqn



Unit Type - A4

1 Bed



Building-1, Tower-2
Unit 4 - Ground Floor To 21st Floor
Unit 8 - Second Floor To 21st Floor

TYPE - A4 (1 BED)

SALE AREA	646 Sft	60.00 Sqn
CARPET AREA	478 Sft	39.76 Sqn



Unit Type - A5

1 Bed



Building-1, Tower-3
 Unit 1 - 1st Floor To 21st Floor

TYPE - A5 (1 BED)

SALE AREA	646 Sft	60.00 Sqm
CARPET AREA	421 Sft	39.11 Sqm



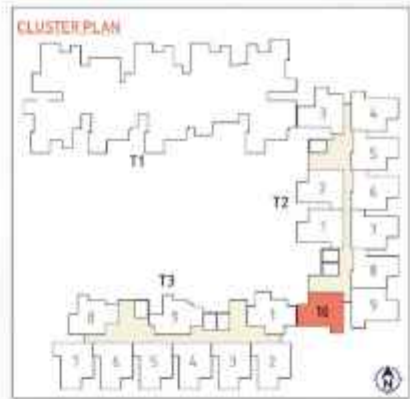
View of Central Courtyard





Unit Type - A6

1 Bed



Building-1, Tower-2
 Unit 10 - Ground To 21st Floor

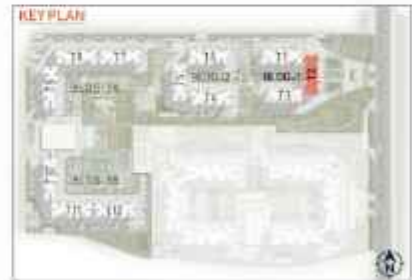
TYPE - A6 (1 BED)

SALE	646 Sff	60.00 Sqm
CARPET	428 Sff	39.76 Sqm



Unit Type - A7

1 Bed



Building-1, Tower-2
 Unit 1 - Ground Floor To 21st Floor
 Unit 2 - 1st Floor To 19th & 21st Floor

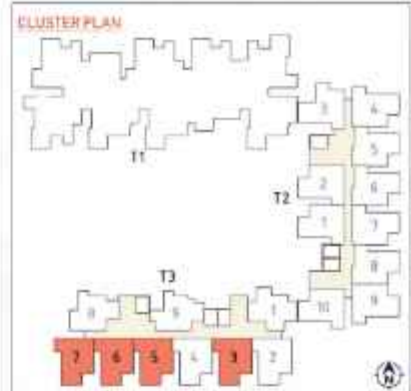
TYPE - A7 (1 BED)

SALE AREA	646 Sft	60.00 Sqm
CARPET AREA	428 Sft	39.76 Sqm



Unit Type - A8

1 Bed



Building-1, Tower-3
 Unit 3 - 2nd Floor To 21st Floor
 Unit 5, 6 & 7- Ground To 21st Floor

TYPE - A8 (1 BED)

SALE	646 Sft	60.00 Sqn
CARPET	428 Sft	39.76 Sqn



Unit Type - A9

1 Bed



Building-1, Tower-3
Unit 2, 4 - Ground Floor To 21st Floor

TYPE - A9 (1 BED)

SALT	846 Sqft	80.00 Sqm
CARPET	428 Sqft	39.76 Sqm



Unit Type - A10

1 Bed



Building-1, Tower-2
 Unit 5, 6 & 7 - Ground Floor To 21st Floor

TYPE - A10 (1 BED)

SALE	650 Sft	60.39 Sqm
CARPET	431 Sft	40.08 Sqm



Unit Type - A11

1 Bed



Building-1, Tower-2
Unit 3 - Ground Floor To 21st Floor

TYPE - A11 (1 BED)

SALE	652 Sft	66.63 Sqn
CARPET	428 Sft	39.76 Sqn



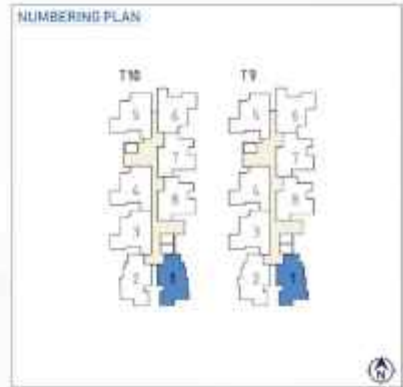
View of Central Boulevard





Unit Type - B1

2 Bed



Building - 3A & 3B
 Tower 9, Unit 1 - Ground To 20th Floor
 Tower 10, Unit 1 - Ground To 21st Floor

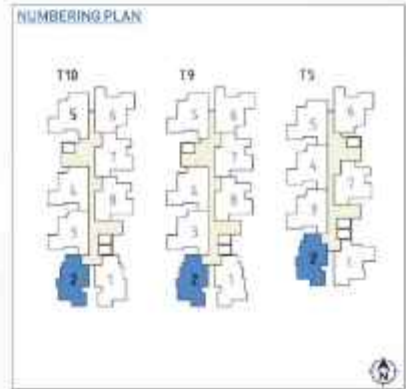
TYPE - B1 (2 BED)

SALE AREA	935 SqFt	88.66 Sqm
CARPET AREA	614 SqFt	57.04 Sqm



Unit Type - B2

2 Bed



Building - 2, 3A & 3B

Tower 5, Unit 2 - Ground To 21st Floor

Tower 9, Unit 2 - Ground To 20th Floor

Tower 10, Unit 2 - Ground To 23rd Floor

TYPE - B2 (2 BED)

SALE AREA	955 SFT	88.66 Sqn
CARPET AREA	614 SFT	57.04 Sqn



Unit Type - B3

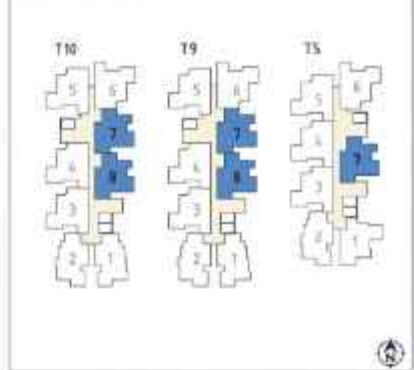
2 Bed



KEY PLAN



NUMBERING PLAN



Building - 2, 3A & 3B
 Tower 5, Unit 7 - 1st To 19th & 21st Floor
 Tower 9, Unit 7 - Ground To 20th Floor
 Unit 8 - 1st To 19th Floor
 Tower 10, Unit 7 - Ground To 21st Floor
 Unit 8 - 1st To 19th & 21st Floor

TYPE - B3 (2 BED)

SALE AREA	971 Sft	90.21 Sqm
CARPET AREA	635 Sft	59.01 Sqm



Unit Type - B4

2 Bed



TYPE - B4 (2 BED)

SALE AREA	971 Sft	90.21 Sqm
CARPET AREA	635 Sft	59.01 Sqm



Building - 1, 2, 3A & 3B

Tower 1&5, Unit 4 - Ground To 21st Floor
 Unit 5 - Ground To 19th & 21st Floor
 Unit 6 - 2nd To 21st Floor

Tower 4, Unit 6 & 7 - Ground To 21st Floor

Tower 7&8, Unit 4 - Ground To 20th Floor
 Unit 5 - Ground To 19th Floor
 Unit 6 - 2nd To 20th Floor

Tower 11&12, Unit 6&7 - Ground To 21st Floor



Unit Type - B5

2 Bed



Building - 3A
Tower 8, Unit 3 - Ground To 20th Floor

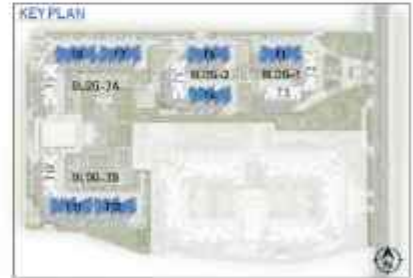
TYPE - B5 (2 BED)

SALE AREA	977 Sft	90.77 Sqm
CARPET AREA	628 Sft	58.30 Sqm



Unit Type - B6

2 Bed



Building - 1, 2, 3A & 3B

Tower 1 & 6, Unit 7 - Ground To 21st Floor

Tower 4, 11 & 12, Unit 1 - Ground To 19th & 21st Floor

Unit 8 - 1st To 21st Floor

Tower 7 & 8, Unit 7 - Ground To 20th Floor

TYPE - B6 (2 BED)

SALE AREA	977.511	98.77 Sqm
CARPET AREA	628.511	58.30 Sqm



Courtyard View - North West



Artist's Impression



Unit Type - B7

2 Bed



Building - 1, 2, 3A & 3B

Tower 1, Unit 3 - Ground To 21st Floor

Tower 4, 11 & 12, Unit 3 - 2nd To 21st Floor

Tower 6 & 7, Unit 3 - Ground To 20th Floor

TYPE - B7 (2 BED)

SALE AREA	977.511	99.77 Sqn
CARPET AREA	628.511	58.30 Sqn



Unit Type - B8

2 Bed



Building - 2
Tower - 5, Unit 1 - Ground To 21st Floor

TYPE - B8 (2 BED)

SALE AREA	984.511	91.39 Sqm
CARPET AREA	543.511	50.60 Sqm

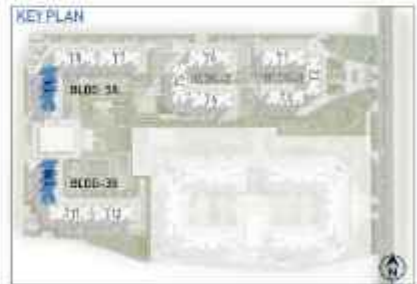


Unit Type - B9

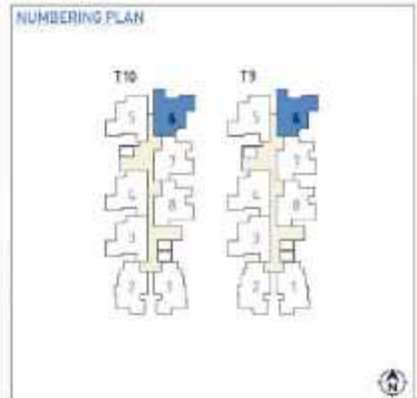
2 Bed



KEY PLAN



NUMBERING PLAN



Building - 3A, 3B

Tower 9, Unit 6 - Ground To 20th Floor

Tower 10, Unit 6 - Ground To 21st Floor

TYPE - B9 (2 BED)

SALE AREA	996 Sft	92.38 Sqn
CARPET AREA	625 Sft	58.07 Sqn



Unit Type - B10

2 Bed



Building - 2

Tower 5, Unit 6 - Ground To 19th & 21st Floor

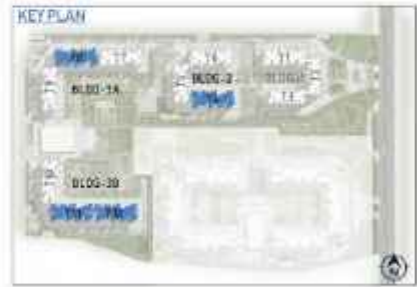
TYPE - B10 (2 BED)

SALE AREA	994 SFT	92.38 Sqn
CARPET AREA	625 SFT	58.07 Sqn



Unit Type - B11

2 Bed



Building - 2, 3A & 3B
 Tower 8, Unit 2 - Ground To 20th Floor
 Tower 4, 11 & 12, Unit 5 - Ground To 19th & 21st Floor

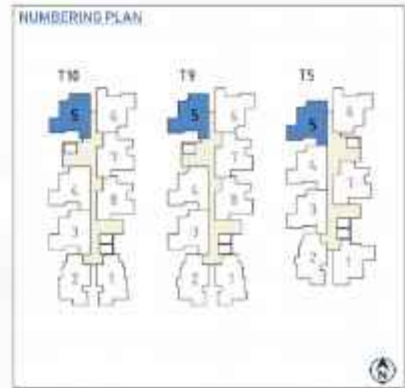
TYPE - B11 (2 BED)

SALE AREA	999 Sft	92.81 Sqm
CARPET AREA	630 Sft	58.55 Sqm



Unit Type - B12

2 Bed



Building - 2, 3A & 3B
 Tower 5 & 10, Unit 5 - Ground To 21st Floor
 Tower 9, Unit 5 - Ground To 20th Floor

TYPE - B12 (2 BED)

SALE AREA	999 SF1	92.81 Sqn
CARPET AREA	630 SF1	58.15 Sqn



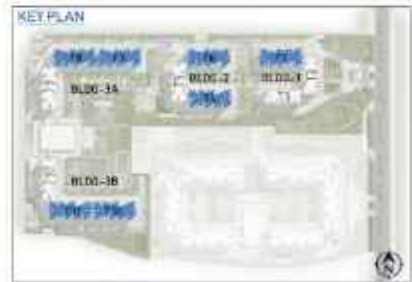
Unit Type - B13

2 Bed



TYPE - B13 (2 BED)

SALE AREA	999 SFT	92.81 Sqm
CARPET AREA	630 SFT	58.55 Sqm



- Building - 1, 2, 3A & 3B
- Tower 1, Unit 1 - 1st To 21st Floor
 - Unit 2&8 - Ground To 21st Floor
 - Tower 4, Unit 2&4 - Ground To 21st Floor
 - Tower 6, Unit 1 - 1st To 19th & 21st Floor
 - Unit 2 & 8 - Ground To 21st Floor
 - Tower 7, Unit 1 - 1st To 19th Floor
 - Unit 2&8 - Ground To 20th Floor
 - Tower 8, Unit 1 - 1st To 19th Floor
 - Unit 8 - Ground To 20th Floor
 - Tower 11&12, Unit 2&4 - Ground To 21st Floor



Unit Type - B14

2 Bed (R)



TYPE - B14 (2 BED)

SALE AREA	999.521	92.87 Sqm
CARPET AREA	632.571	58.55 Sqm



Building - 7, 3A & 3B

- Tower 5, Unit 3 - 2nd To 21st Floor
- Unit 4 - Ground To 21st Floor
- Tower 9, Unit 3 - 2nd To 20th Floor
- Unit 4 - Ground To 19th Floor
- Tower 10, Unit 3 - 2nd To 21st Floor
- Unit 4 - Ground To 19th & 21st Floor



Clubhouse View



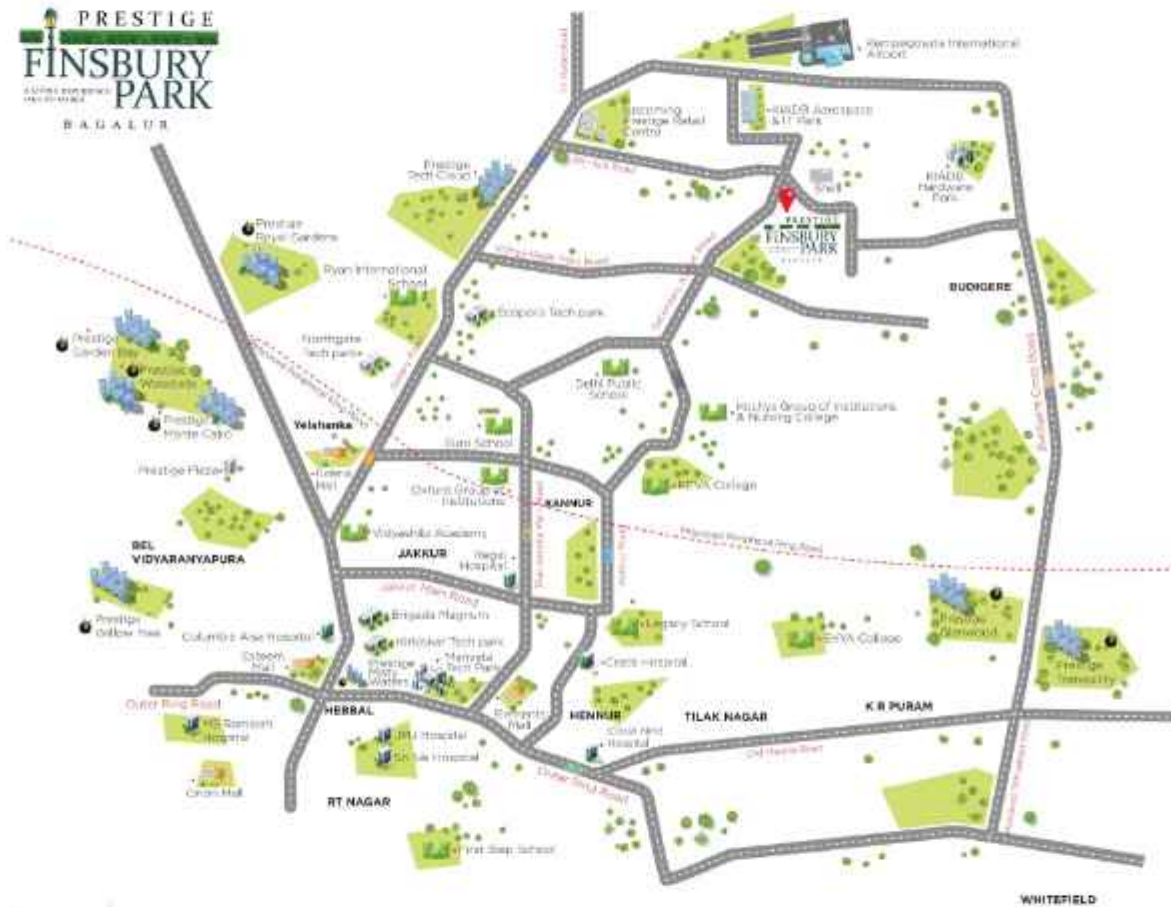


Clubhouse View - North East





Location Map



Map not to scale