



5 ಎಲಿಮೆಂಟ್ಸ್

ಬರಲೆ

Nature's Lap

— By 5 Elements —

Where you can be one with nature

2BHK, 3BHK, 4BHK Luxury Apartments

Off Tumkur Road, Yeshwanthpur, Bangalore

N 13.0578 E 77.4925

Life is a  
**multi-faceted journey,**

that is  
**rich and stimulating!**

**Experience it!**



Live a life that's

# bursting with energy

Step into a healthier lifestyle, surrounded by nature's pace in open spaces with fresh air all around.

**Jogging Track • Outdoor Fitness Court • Meditation Deck**





Live a life that's  
**glowing with  
harmony**



Experience the perfect balance of design and open spaces. Feel the quiet bliss that harmony brings.

**Spacious Open Area • Garden Seating • Outdoor Spaces**



Live a life that's

# nestled in paradise

Relax in a home designed for comfort,  
where children play, elders feel at ease,  
and life feels like paradise.

Planting Deck • Walkways • Nancy Corner





Fill your home with delight; a timeless space designed to make memories to cherish for years.

Swimming Pool • Pet Park • Skating Rink

Live a life that's



sprinkled  
with joy





Live a life that's

# designed for wellness



Leave stress behind in a space built for your comfort, and enjoy every amenity to make your life easier.

Senior Wellness Park • Yoga Lawn • Herb Garden



Experience refined living in a place  
where every detail, finish, and material, is  
crafted for ultimate luxury.

Luxurious Finish • Visitors' Parking • Exotic Garden



Live a life that's

wrapped  
in luxury




Live a life that's

# rich in friendship

Be a part of a vibrant community, build bonds, thrive, and surround yourself with like-minded neighbours.

Clubhouse • Amphitheatre • Badminton Courts





Enjoy worry-free living in a secure,  
nature-filled campus; a safe haven for  
you and your loved ones.

24/7 Water & Power Supply • CCTV • Gate Management



Live a life that's

flowing  
with ease





# Nature's Lap

— By 5 Elements —

Inspired by the beauty of flowers and nature, Nature's Lap has been envisioned and built as a home where you can live and experience life to the fullest, bringing a unique radiance to your everyday.

Situated off Yeshwanthpur, near Tumkur Road, this project by 5 Elements Homes spans 5 acres with a beautiful balance of open spaces and accessible connectivity, enabling a vibrant community of like-minded people.

Thoughtfully designed across 8 blocks of ground plus 4 floors, the property is complemented by a sprawling clubhouse that radiates vibrancy and harmony. Offering 365 residences in 2BHK, 3BHK, and 4BHK layouts, it invites you to find a home that truly resonates with your way of living.





# Come home to Nature's Lap!

The upcoming landmark in Bangalore's real estate landscape, designed with open spaces, state-of-the-art amenities, and apartments that radiate comfort and connection. A thoughtful blend of luxury, functionality, and modern design, giving you the freedom to choose a home that you can truly call home.





# Where light, space, and harmony reside...

Homes at Nature's Lap are a perfect blend of elegance and practicality. With flowing natural light, *vastu*-compliant spaces, and private living, every apartment is a serene retreat crafted for a brighter way of life.

Begin your story at Nature's Lap!



# Zones of Solace

5-acre Campus • 8 Blocks • 365 Apartments

Experience a lifestyle where every block is a private retreat, flowing with natural light and gentle calm, turning every block into a sanctuary of its own.



**26**  
Nature's Lap  
By 5 Elements

## Flowers—the ultimate expression of nature's beauty!

The eight blocks are inspired from flowers, signifying life's finest values. The names reflect nature's grace, strength, and significance in a well-balanced life.

### Begonia

is the very reflection  
care, consideration,  
and grace.

### Orchid

blooms as the  
epitome of beauty and  
strength, with allure.

### Lotus

symbolises spiritual  
awakening, fragrant  
with purity.

### Magnolia

resonates everlasting  
connection with its  
noble elegance.

### Jasmine

epitomises serenity  
and warmth, the  
pinnacle of piety.

### Dahlia

imbues beauty in  
dignity, layered  
with charm.

### Rose

speaks of the royal  
appeal of the mystique,  
fresh as a new bloom.

### Sunflower

conveys happiness  
and positivity with its  
vibrantly joyful energy.

### Hibiscus

permeates the air with  
beauty and a splash of  
tropical fun.

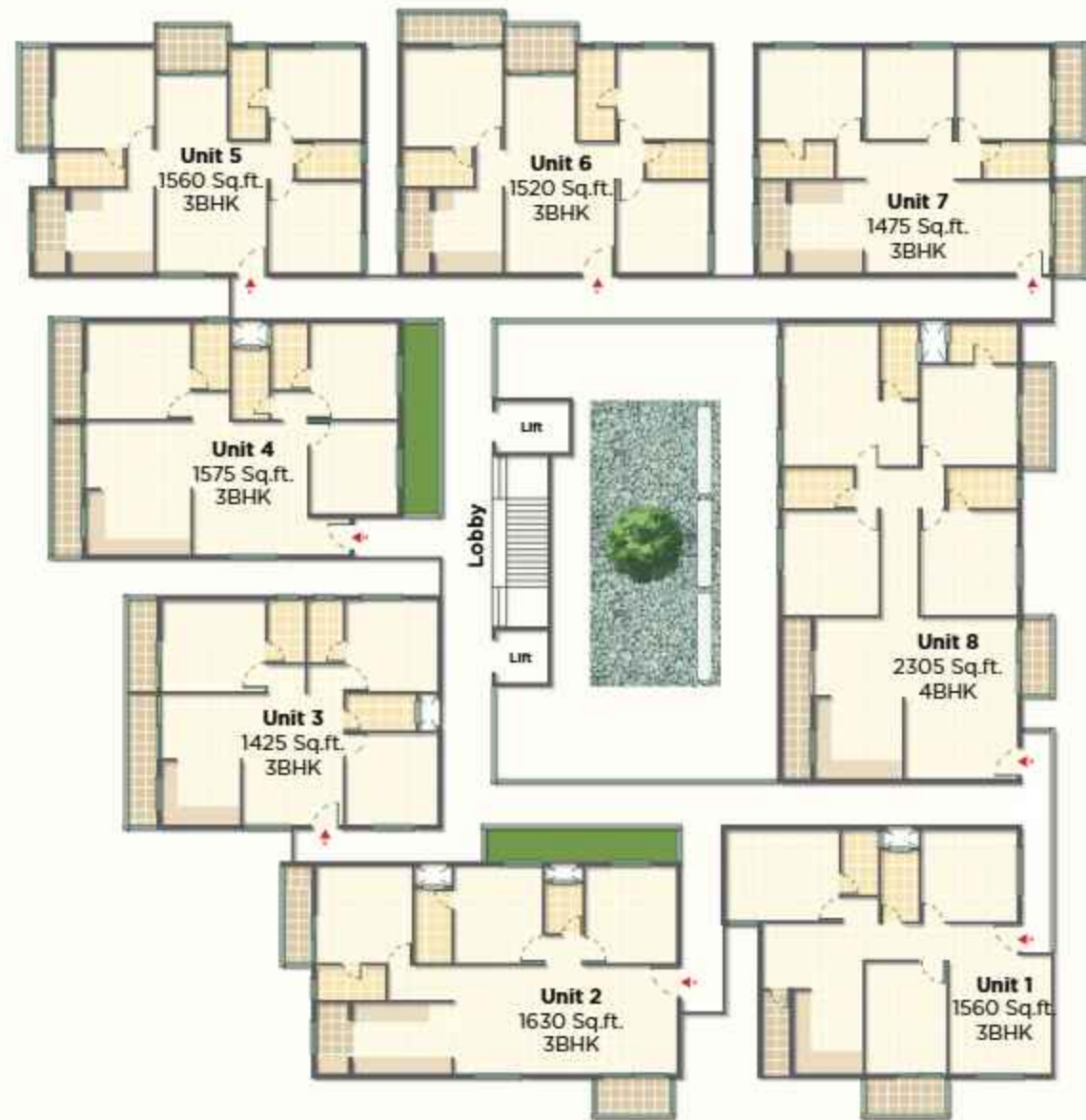
# Perfect Balance

Step into your future home, even before you move in. Each layout is thoughtfully crafted so rooms have a natural flow, the spaces breathe, and every little detail is intentionally thoughtful.



## Sunflower Block A Wing 1

Ground Floor/Typical Floor  
5 Floors • 40 Apartments



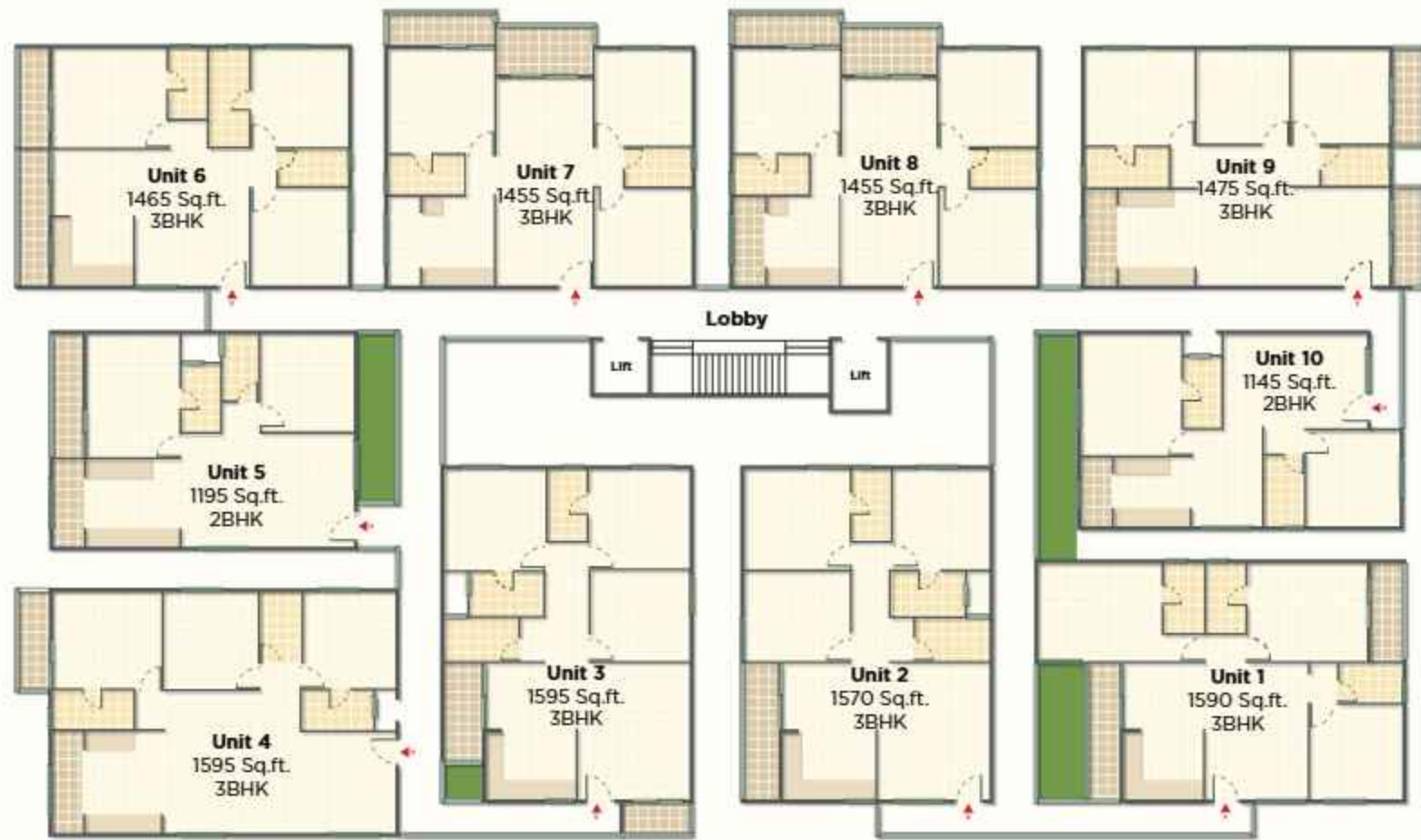
## Dahlia Block A Wing 2

Ground Floor/Typical Floor  
5 Floors • 50 Apartments



# Lotus Block B Wing 1

Ground Floor/Typical Floor  
5 Floors • 50 Apartments



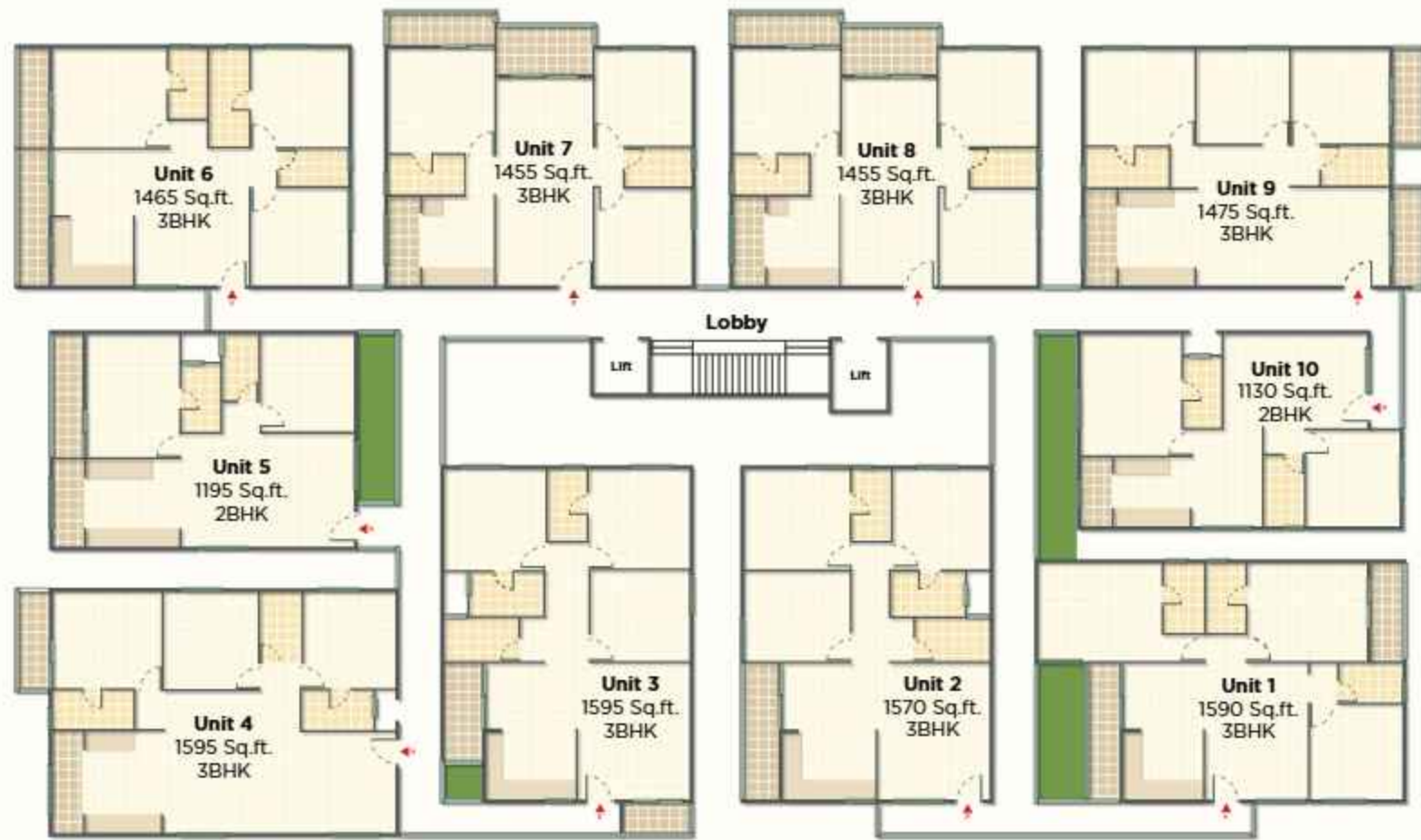
# Regonia Block B Wing 2

Ground Floor/Typical Floor  
5 Floors • 30 Apartments



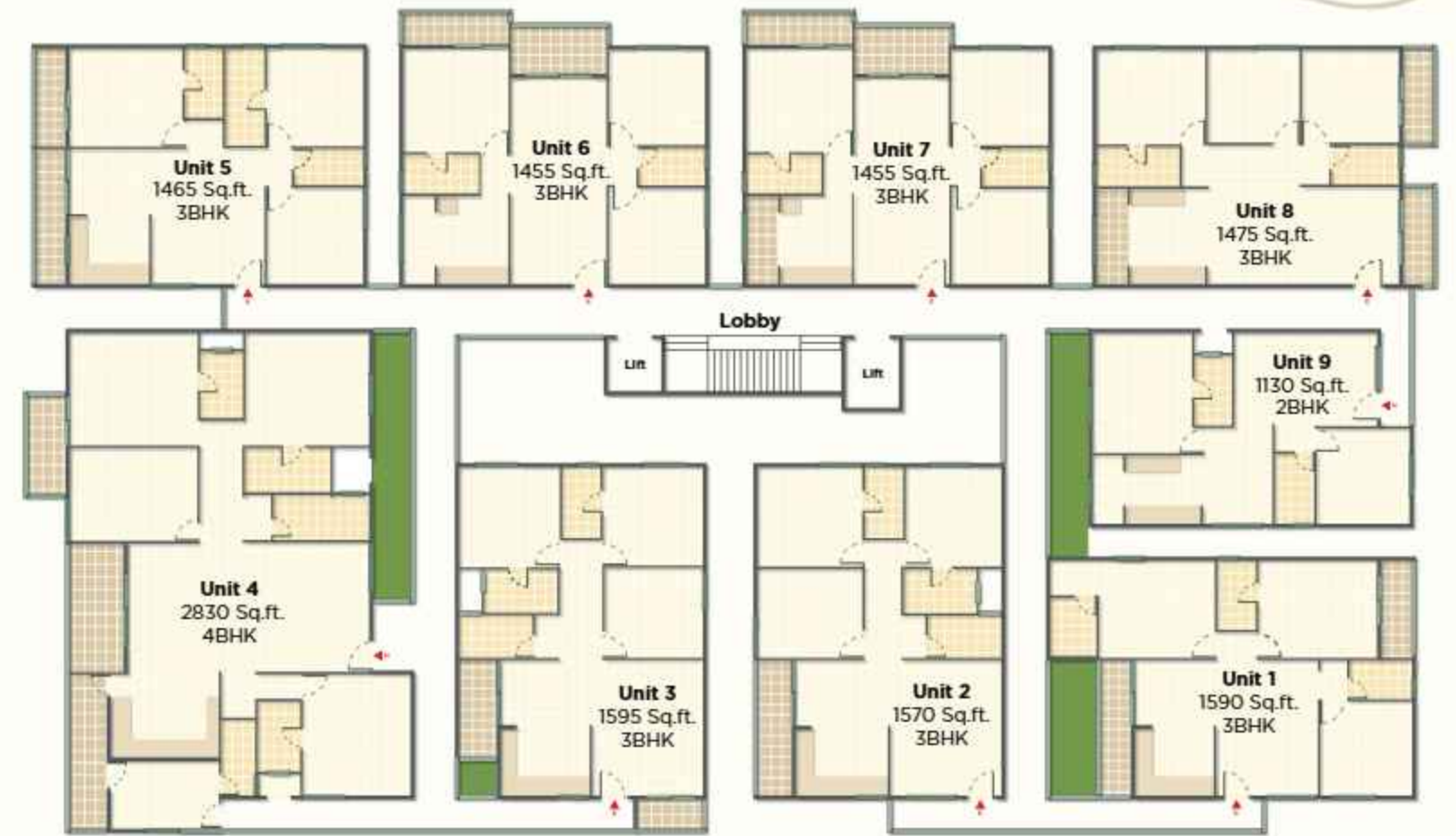
# Orchid Block B Wing 3

Ground Floor/Typical Floor  
5 Floors • 50 Apartments



# Magnolia Block B Wing 4

Ground Floor/Typical Floor  
5 Floors • 45 Apartments





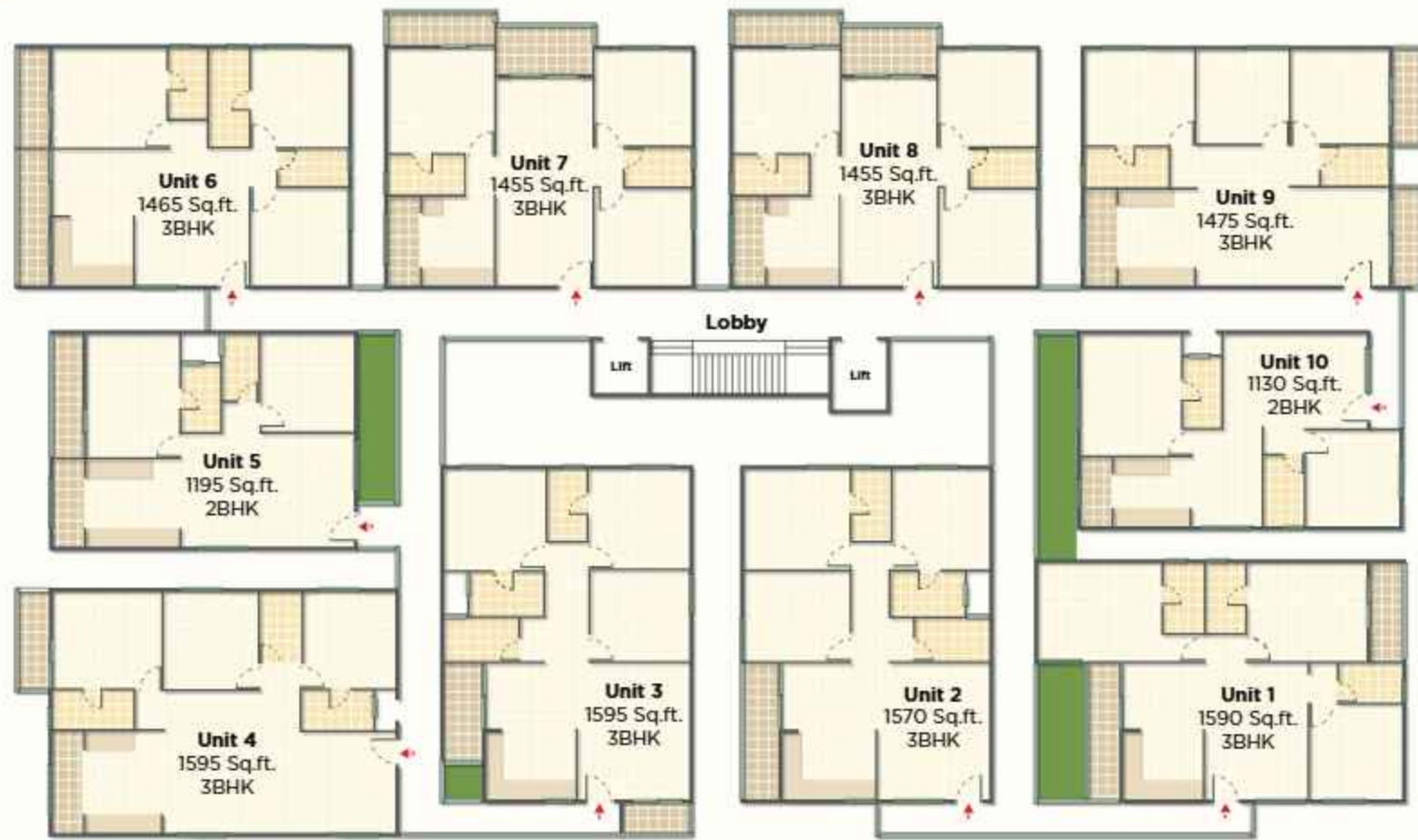
# Rose Block B Wing 5

Ground Floor/Typical Floor  
5 Floors • 50 Apartments



# Hibiscus Block B Wing 6

Ground Floor/Typical Floor  
5 Floors • 50 Apartments



# Curated Comforts

The amenities for you to experience  
the art of refined living

A life that is designed to be lived to the fullest. Our amenities offer spaces to relax, socialise, and recharge, creating a lifestyle that's rich, stimulating, engaging, and deeply rewarding—every single day.

# Energy

awakens here

- Gym/Fitness Centre
- Jogging Track
- Half Basketball Court
- Table Tennis
- Archery



# Paradise

awaits you

- Meditation Deck
- Lawn Area for Outdoor Party
- Pet Park
- Sand Play
- Amphitheatre



# Harmony

surrounds you

- Walkway
- Garden Seating
- Open Lawns
- Outdoor Spaces
- Landscaped Gardens & Green Spaces



# Joy

in every corner

- Kids Play Area
- Kids Pool
- Game Wall
- Hopscotch
- Chess Table





# Wellness

at your pace

- Swimming Pool
- Seniors' Court
- Outdoor Fitness Court
- Carrom Board



# Friendship

thrives here

- Badminton Court
- Community Room
- Small Cricket Pitch
- Youth Corner
- Skating Rink



# Luxury

redefined

- Luxurious Clubhouse
- Snooker Table
- Trampoline
- Table Tennis
- Library



# Ease

in every step

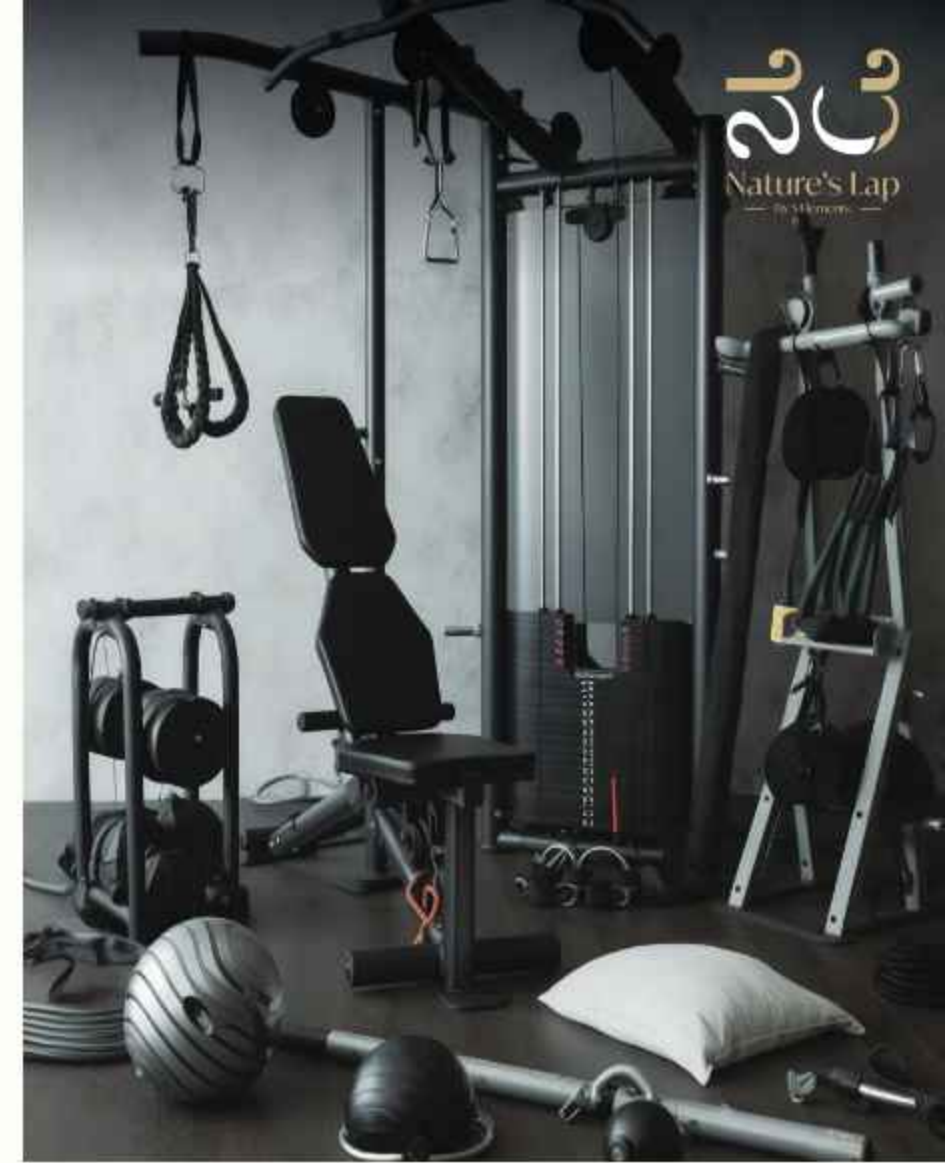
- Visitors' Parking
- EV Charging Point
- Common Laundry Place
- School/Office Shuttle Service





# Jasmine The Clubhouse

Imbibe in the spirit of uplifting Jasmine—an impressive clubhouse spanning across 36,000 sq. ft. and three full floors, designed as the perfect setting for unwinding, socialising, and lively gatherings. A space epitomising serenity and warmth to make your everyday a little more special.



5 Elements  
Nature's Lap  
By 5 Elements



Badminton  
Court



Men's  
Gym



Women's  
Gym



Changing  
Room



Swimming  
Pool



Table Tennis



Snooker



Carrom



Chess



Library

# The Address

A place to start  
your own journey

Step into a neighbourhood where everything is within reach, yet your home always welcomes you with calm, comfort, and ease.



# Yeshwanthpur

Tucked away in the green serenity, yet closer to the bustling energy of the city, Yeshwanthpur is rapidly emerging as Bangalore's dynamic development hub. The area is blessed to be the most strategic real estate destination.

Yeshwanthpur is more than just an address. It's a balanced lifestyle, blending urban accessibility with the promise of lush green landscapes and unmatched quality of life. A place where your vision for an ideal home truly takes shape, aligned with the vibrant energy of tomorrow.







# Work

- Peenya Industrial Hub
- ISRO Data Centre
- ITC Life Science and Technology Centre
- Brigade Twin Towers
- Brigade Rubix
- Brigade Magnum
- Manyata Tech Park



# Indulge

- Yeshwanthpur Market
- Orion Mall
- Pheonix Mall of Asia
- IKEA (Nagasandra)
- Taj Yeshwanthpur



# Learn

- Eurokids Pre-School
- St. Philomena Public School
- National Insitute of Design
- Ramaiah Medical College
- Christ (Deemed to be) University
- Indian Institute of Science
- Jindal Public School

# Culture

- ISKCON Temple
- Bangalore International Exhibition Centre
- Parle Biscuit Factory
- HMT Heritage Centre and Museum
- Dr. Rajkumar Memorial
- Malleshwara Market



# Health

- Avesksha Hospitals
- Manipal Hospital Yeshwanthpur
- Ramaiah Memorial Hospital
- Bangalore Baptist Hospital
- Raksha Multi-Speciality Hospital
- Aster CMI Hospital
- Jindal Naturecure Insitute

# Commute

- Green Line Metro
- Peenya
- Jalahalli
- Yeshwanthpur
- Rajajinagar
- NECE Corridor
- Bellary Road



# Visual Diary

Take a sneak peek into the life  
you'll lead in your future home



Front elevation perspective

Right side elevation perspective



Clubhouse with kids play area & yoga lawn

Entrance to the planting deck



Elevated view of the amphitheatre & planting deck



Aerial view of badminton court & swimming pool



Outdoor seating area



Elevated view of the skating rink





Kids' play equipments on sand

Aerial view of the property in the evening





Aerial view of the property and its lush surroundings



Half basketball court

# The Essentials & Beyond

The best of all the basic necessities  
handpicked for your solace

State-of-the-art specifications, thoughtfully chosen  
to enhance every aspect of your life. From durable  
materials to modern facilities, every detail is designed  
for comfort, convenience, and lasting quality.



## Culinary Canvas

### Kitchen

- 20mm granite platform and SS sink with single bowl
- Glazed ceramic tiles up to 4 ft above granite platform
- Provision for water filter, chimney, and hob points in kitchen
- Provision for washing machine point in utility area
- Provision for hand wash point in dining area



## Crafted Carpentry

### Doors and Windows

- Main door: 8 ft height European wooden frame and both-sides teak veneer flush shutter with PU polish
- Internal doors: 7 ft height European wooden frame with flush shutter, both-side laminate
- Windows: two/three tracks UPVC, glazed hinged/sliding windows, iron security grills, UPVC French windows without grill



## Beyond The Switch

### Electrical

- Fire retardant electric wires of Anchor/Finolex/Avocab-make or equivalent ISI-make through PVC conduits concealed in walls and ceilings
- Elegant modular electrical switches of Anchor/Roma/GM-make or equivalent-make
- TV point in living & master bedroom
- Provision of split A/C power point in master bedroom
- Provision of geyser in all toilets
- Exhaust fan points provision in kitchen/utility and toilets



## Harmonious Hues

### Paint

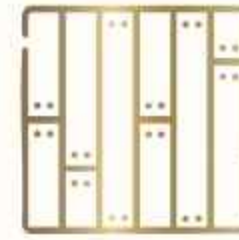
- Interior: Apcolite emulsion paint with roller finish
- Exterior: external emulsion paint with spectrum texture at selected portion for exterior
- MS grills and railings: enamel paints



## Superlative Sanitation

### Toilets

- Wall finish: glazed ceramic wall tile (7 feet from the floor level)
- Fittings: good quality white ceramic ware of ISI-make
- Concealed plumbing lines with CP fittings of Kohler/Jaquar or equivalent-make
- Toilet ventilators made of UPVC fixed glass and with a provision for exhaust fan



## Pristine Floorscapes

### Flooring and Tiling

- 800 x 800 mm vitrified tiles flooring & skirting for living, dining, kitchen, bedrooms, and passage leading to bedrooms
- Antiskid/matt ceramic tiles flooring in toilets
- Antiskid ceramic tiles flooring for balconies and utility
- Staircase and common areas: granite/colour vitrified flooring



## Integrated Water Solutions

### Plumbing

- All plumbing lines are pressure tested
- All water supply lines are of CPVC/GI reputed-make
- Sewage lines will be of PVC-make



## Flawless Contours

### Plastering

- Internal walls smoothly cement plastered with lime rendering
- External walls cement plastered with sponge finish





## Trusted Framework

### Walls and Structure

- RCC framed structure
- Solid/cellular concrete blocks for walls



## Elegant Ease

### Convenience

- Automatic lifts: ISI-make or equivalent
- Car parking facility

## Designed with Detail

At Nature's Lap, every decision from the first foundation to the final touches reflects our commitment to excellence, integrity, and lasting value. We don't just build properties. We create environments designed for comfort, convenience, and a better way of life. When every detail is already taken care of, you know you are home.



# Secured Sanction

At 5 Elements, we follow a clear and thorough approval process to meet every statutory requirement. We ensure full legal compliance at every stage, so you can invest with complete confidence in a property that is secure, transparent, and ready for ownership.

Sanction Authority	Date	Ref Number
Bruhat Bangalore Mahanagara Palike	14/11/2024	No.BBMP/Addl.Dir/JDNORTH/0016/24-25 & PRJ/1403/24-25
Bangalore Water Supply and Sewage Board	13/09/2024	No. BWSSB-NOC-2024-6-23-060401353081
State Level Environment Impact Assessment Authority Karnataka	31/08/2024	No. SEIAA/38/CON/2024
Karnataka State Pollution Control Board	22/01/2025	No. CTE-347186 & PCB/226/ INFRA/2024
Bangalore Electrical Supply Company Limited	11/03/2025	No. SEE/BCN/EE(O)/AEE(O)/2024-25/11509-11
Real Estate Regulatory Authority	06/03/2025	No.PRM/KA/RERA/1251/309/ PR/060325/007556
Commencement Certificate	25/04/2025	CC No. PRJ/1403/24-25/CC/01/New



# Why Choose Us



No common walls  
between apartments



Excellent ventilation  
& natural light



Approved by leading banks



100% clear documents



100% *vastu* compliant



Low maintenance cost



Superior specifications



## 5 ELEMENTS REALTY

Developing Trust. Building Relationships.



Value for money



Promise of quality

7.5K+

Happy Customers

22+

Years of Expertise

40+

Projects Completed

25M+

Sq. Ft. Transformed



No hidden cost.

# Our Roots

The soul of every home we build;  
the values that sets us apart



## Our Success Blueprint

5 Elements is a Bangalore-based company that offers developed plots, custom-built villas, bungalows, and premium apartments.

At 5 Elements, we don't just develop real estate—our vision is to offer a lifetime experience built on faith, blooming with abundance, and prosperity. Our utmost priority is to build a space that you can call your home.

Our legacy spans over 22 years of expertise, more than 40 accomplished projects, and 25 million square feet transformed into purposeful spaces. Backed by the trust of 7,500+ happy customers, we continue to shape environments where value, design, and reliability come together seamlessly.



Develop trust



Create value



Keep promises



Work with integrity



Build relationships



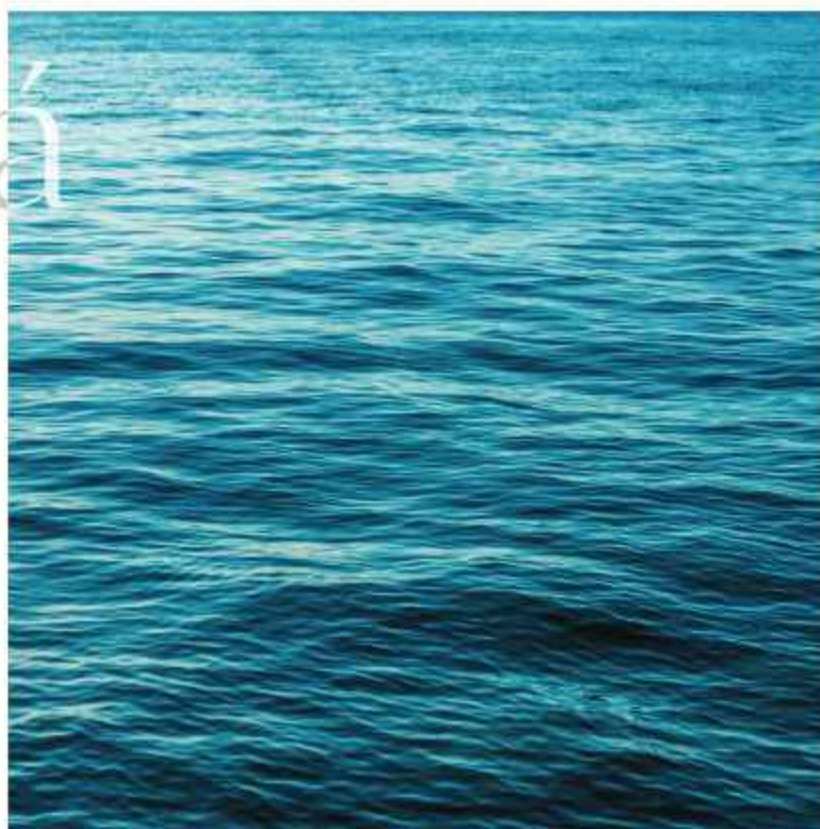
Everything around us, from the tiniest of the pebble to the vastness of the universe, comprises the five elements. It is the harmony of these elements—Earth, Fire, Air, Water, and Space—that bring happiness and peace. A place where these components reside is always abundant with prosperity.

# Prthvī



**Earth**  
The very foundation of being, grounding every life to the cosmos.

# Jalá



**Water**  
The calming fluidity floating through life, enriching every living matter.



# Agni

**Fire**  
The glowing warmth of infinite energy, purifying every being.



# Vāyu

**Air**  
The very breath of life, circulating through the earth, vitalising every force.



# Ākāśa

**Space**  
The vast stillness of the universe, the ethereal soul of existence.

# Crafted Legacy

Decades of undisputed trust, ingenuity, and excellence, in Bangalore. Our legacy is built on the homes we've crafted, each reflecting quality, care, and a commitment to creating spaces people love.

- Abhaya Orchids**  
Doddakammanahalli, Banerghatta Road
- Adithya Garden**  
Hosa Road Junction, Hosur Road (Near Electronic City)
- Adithya Green Gardens**  
KR Puram
- Adithya Harmony**  
Vakil Garden Layout, Kanakapura Road
- Aditi Classic**  
Banashankari 2nd Stage
- Aditi Grandeur**  
Yelechanahalli, Off Kanakapura Road
- Aishwarya Green Homes**  
Banashankari 6th Stage, 2nd Block
- Ajantha Prime**  
Electronic City
- Ajantha Royal**  
Electronic City
- Ajantha Vihar**  
Yelahanka New Town
- Devagiri Dew Flower**  
Kanakapura Road
- Devagiri Divine**  
Banashankari
- Eshwaree Orchids**  
Yelahanka
- GR Gardenia**  
Electronic City, Phase-1
- GR Greenline**  
JP Nagar, Phase-7
- GR Lotus**  
RR Nagar
- GR Luxuria**  
HSR Layout, Sector-6
- GR Onyx**  
Yelahanka New Town
- GR Opal**  
Yelahanka New Town
- Jnana Nivas**  
RR Nagar
- Nandi Heritage**  
Basavanagudi, Old Veterinary Hospital Road
- Om Sri Residency (Block 1 & 2)**  
Uttarahalli Main Road
- Pranavi Pride**  
Doddakammanahalli, Banerghatta Road
- Sai Nandana GP Pride**  
Anjanapura Main Rd., Off Banerghatta Road
- Sai Nandana Grandeur**  
Gottigere, Banerghatta Road
- Sai Nandana Marvella**  
JP Nagar, 8th Phase (Anjanapura BDA)
- Sai Nandana South Avenue 1 & 2**  
Ratna Vilas Road, Basavangudi
- Saketh Duo Marvel**  
Yelahanka
- Saketh Hillside**  
Banashankari
- Sanjana Residency**  
Gubbalala (off: Kanakapura Road)
- Sapatagiri Suprabhatam**  
Jayanagar
- Silicon Citi**  
Whitefield
- Silicon Pride**  
Whitefield
- Silicon Tree**  
Singasandra, Near Electronic City
- Sri Mallikarjuna Residency**  
Kanakapura Road
- Temple Bells**  
RR Nagar
- Temple Bells Premier**  
RR Nagar
- Urban Nest by 5 Elements (ongoing)**  
Mysuru Road
- Vasundra Cyber Nest**  
Mysore Road
- Vasundra Heights**  
Nagarbhavi
- Vasundra Krishnashreya**  
Nagarbhavi
- YGR Grandeur**  
Rajarajeshwari Nagar




The best way to know us...

...is to visit us

**Reach out to us at**

+91 99026 78888

[www.5elementsrealty.com](http://www.5elementsrealty.com); [www.natures-lap.com](http://www.natures-lap.com)

 5elementsrealty  5elementsrealty197  5ElementsRealty

*Disclaimer: This brochure is purely conceptual in nature and is by no means a legal document. The promoters, developers & architects reserve the right to add, delete or alter any specification or elevation mentioned herein.*



# Master Plan



# SCPL

## Nature's Lap — By 5 Elements —

Presented by



A project by



Project approved  
& funded by



No. 05, Bagalakunte, Yeshwanthapura Hobli,  
Bangalore - 560073

+91 99026 78888

[www.5elementsrealty.com](http://www.5elementsrealty.com); [www.natures-lap.com](http://www.natures-lap.com)

PRM/KA/RERA/1251/309/PR/060325/007556

Selementsrealty Selementsrealty197 SElementsRealty

243707 | [www.zandb.in](http://www.zandb.in)  
Concept and design by Zine & Broccoli © 2025  
Print production by SCPL, [enquiry@scpl.in](mailto:enquiry@scpl.in)  
[enquiry@zandb.in](mailto:enquiry@zandb.in)