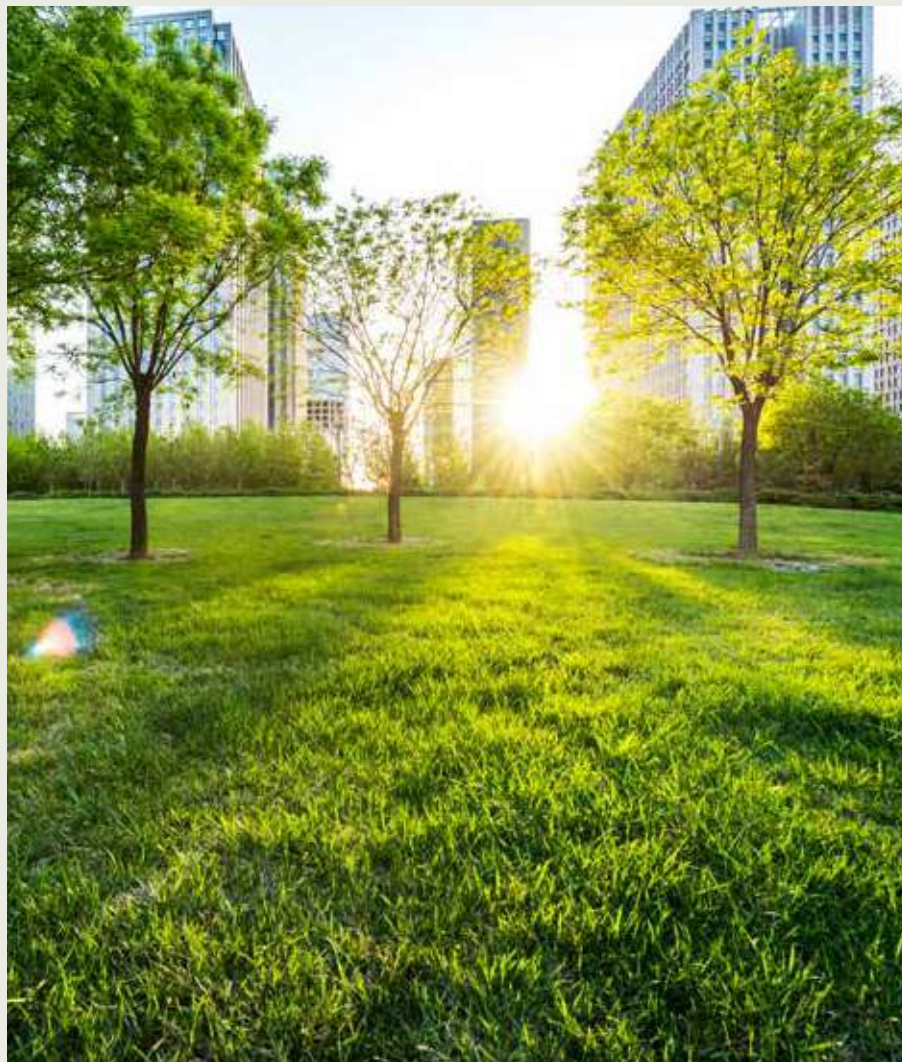


**AN EXPANSIVE 25-ACRE PARK
AWAITS YOU. BUT YOU CAN**

Start relaxing now.





Open your windows, your eyes and your life to verdant greens rarely seen in the city that never sleeps.

Make yourself at home in Mumbai's largest private estate, sprawling over 100 acres. Stake claim to a sprawling 25-acre lush green garden, where walks turn into outings and breaks turn into meditative sojourns.

The expansive rolling greens on one side and the bustling social and architectural infrastructure on the other make this more than just a residential address. It's a cityverse in itself. Where life is lived to the fullest, revelling in luxuries, basking in its soft glow of accomplishment. Make yourself at home at Ajmera Greenfinity.

ADD A LOT MORE TO LIFE AND LIVING.

*Revel in the infinite joys of
Greenfinity.*

Welcome to homes that reach up from the earth,
to greet a future that's bright & full of sunshine.



AJMERA

GREENFINITY

A LITTLE PIECE OF HEAVEN

**GREAT HOMES
TO COME HOME TO.**

Great views, too.

Our RERA-carpet 535 sq. ft. residences offer the perfect blend of elegance and comfort, surrounded by endless greenery on one side and captivating city views on the other.



Get ready to settle into luxurious living at its finest in our G+21-storey tower nestled within a sprawling 100-acre private estate, complemented by 25-acres of lush garden that envelop you in nature's embrace.

Welcome to Greenfinity

GREENS AS FAR AS THE EYES CAN SEE.

Everything else at arm's length.

Reference Image

Reference Image



PUBLIC TRANSPORTS

Monorail Station	2 mins		500 m
Metro Station (Line 4)	2 mins		500 m
Wadala Station	10 mins		4.8 km
GTB Station	5 mins		2.6 km



HOSPITALS

Kikabhai Trust Hospital	10 mins		4.1 km
Nowrosjee Wadia Hospital	15 mins		6.7 km
Wadala TB Hospital	15 mins		6.6 km
Tata/KEM Hospital	20 mins		10 km



TEMPLES

Hanuman Temple	10 mins		6 km
The Astika Samaj	13 mins		7 km
Shree Ram Mandir	9 mins		5 km
Swami Narayan Mandir	13 mins		7 km



MALLS

Jio World Drive	13 mins		7 km
R City Mall	25 mins		13 km
Phoenix Palladium	25 mins		13 km
Phoenix Marketcity	20 mins		10 km



HIGHWAYS

Eastern Freeway	3 mins		1 km
Eastern Express Highway	4 mins		3 km
BKC Connector	4 mins		3 km
MTHL (Atal Setu)	10 mins		6 km



EDUCATIONAL INSTITUTES

Don Bosco High School	13 mins		7 km
Auxilium Convert High School	13 mins		7 km
Shishuvan School	10 mins		6 km
JBCN International School	5 mins		4 km



GARDENS & PLAYGROUNDS

Bhakthi Park	2 mins		500 m
Mancherji Joshi Park	13 mins		7 km
Karve Garden	9 mins		6 km
Five Gardens	13 mins		7 km



MULTIPLEX & ENTERTAINMENT

IMAX	1 min		100 m
PVR Cinemas	9 mins		5 km
Shanmukanada Hall	10 mins		6 km
MCA Club	10 mins		6 km



AIRPORT

International Airport	25 mins		12 km
-----------------------	---------	--	-------



MARKET

Sion Market	9 mins		5.6 km
Matunga Market	10 mins		6 km
Dadar Market	18 mins		9 km



HOTELS

ITC Maratha Grand Central	18 mins		9 km
St.Regis	25 mins		13 km
Four Seasons	27 mins		14 km
Sofitel	10 mins		6 km



BUSINESS HUBS

Wadala Business District	2 mins		2 km
Bandra Kurla Complex	10 mins		6 km
Lower Parel	20 mins		10 km
Fort	20 mins		15 km
Godrej Business Complex	18 mins		14 km



REACH ANYWHERE IN MUMBAI

in just 30 minutes.



Enjoy exceptional connectivity with the 'Bhakti Park' monorail station minutes away, a 20-minute drive to South Mumbai via the Eastern Freeway, and an upcoming Metro Line 4 station nearby. The Eastern Express Highway and BKC Connecting Link provide swift access, while the Mumbai Trans-Harbour Link (MTHL) is within a 10-minute drive. In short, Wadala offers you connectivity that most of Mumbai does not even dare to dream about.

Wadala's strategic location is not limited to its proximity to the Chhatrapati Shivaji International Airport; it also enjoys excellent connectivity to the upcoming Navi Mumbai International Airport through the Mumbai Trans-Harbour Link (MTHL).

This offers residents a dual advantage, making it a hub for seamless national and international travel within Mumbai's thriving infrastructure. Wadala's strategic location, anchored by its own Wadala Railway Station and GTB station within 10-minutes of reach, offers seamless commuting options for residents.

Its proximity to central railway hubs like Dadar, Matunga, and Sion ensures that the entire city is easily accessible, making Wadala an ideal choice for those seeking convenient and efficient connectivity in Mumbai



Reference Image

SHOP TO YOUR HEART'S

content

Indulge in the latest fashion trends and discover unique finds from local artisans, and satisfy your shopping cravings, all within a short stroll from your doorstep. Daily essential shopping and grocery needs are also conveniently addressed within this vibrant neighbourhood, making it a one-stop destination for all your shopping requirements.

leisure with luxury.

India's first IMAX Dome Theatre, a cinematic experience like no other, and never a dull moment with thrilling go-karting experiences at Indi Kart Racing. It's heaven-sent for sports and games enthusiasts, with access to the Ajmera Sports Academy featuring cricket and football facilities.



Reference Image

WHERE LIFE'S A TAD BIGGER

than king-size.

Mesmerizing 180° panoramic views and uninterrupted vistas enhance the expansiveness of your home. Optimal orientation ensures cooling cross breezes foster a fresh and invigorating ambience throughout the day. This is not just a home; it's a retreat where you can relish the beauty of both nature and the cityscape.



ENJOY THE BEST PART OF GETTING TO WORK:

Beating traffic.

The Wadala Notified Area (WNA) is envisaged as the future international business hub of Mumbai, to be developed on the lines of the Bandra Kurla Complex.

The total scale and potential for development in Wadala Notified Area (WNA) is 385-Acres of mixed-use development, having more than 4mn sqm of office, retail, leisure, hospitality, apartments and civic facilities.

It is also India's First large-scale Transit Oriented Development. This upcoming transformative project will include an interstate bus terminal, 3 monorail stations, and seamless connectivity with the 2 Metro stations.

GET TO KNOW

the heart of your home.

Living Room

Our charming and intuitively well-planned living room makes a lasting impression of happiness and positivity.



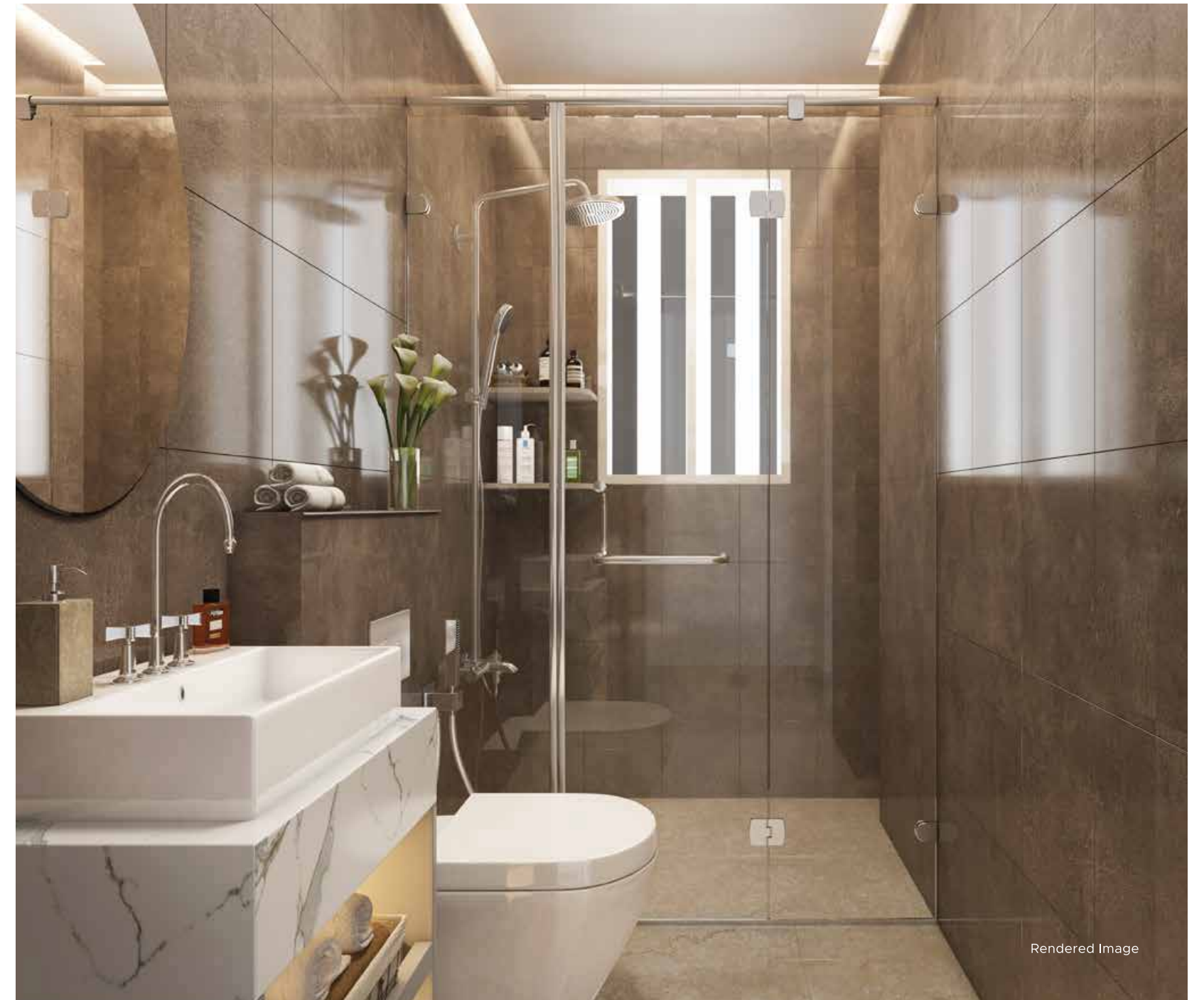
Common Washroom

Your bathrooms here make you unwind and refresh to the core.



Master Washroom

A grand extension of your most personal space, let the luxury of your bath area welcome you each day into its reassuring embrace.



Master Bedroom

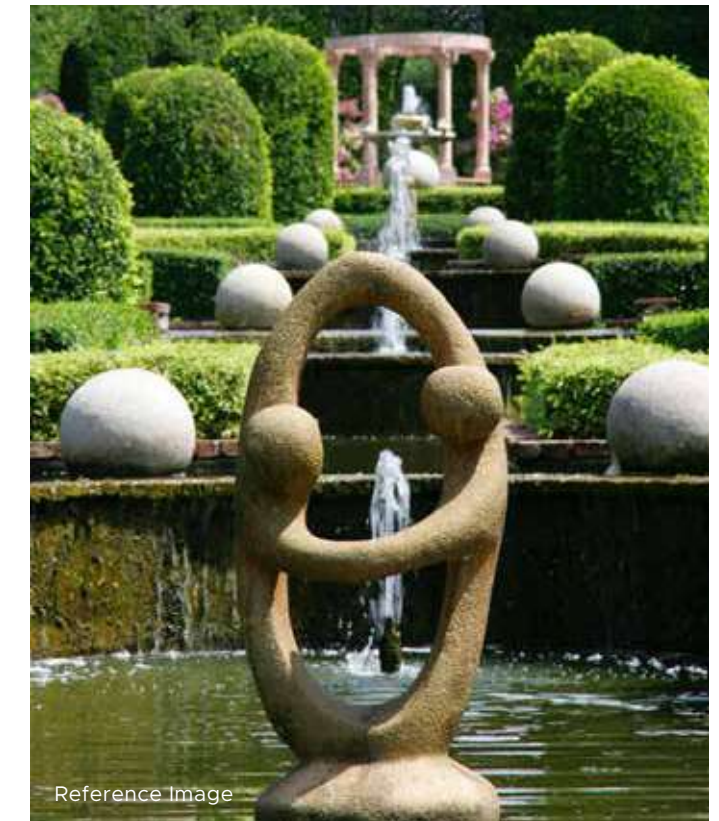
Specially designed to let in ample fresh air and sunlight, your bedroom here is an ideal haven to start and end your day perfectly.

WHAT OTHERS
CALL A DREAM
WISHLIST,
*You Call
Amenities.*

**YOU WILL HAVE ACCESS TO
20+ AMENITIES WITHIN THE TOWER.**

Leisure zone

- Connecting Walkway
With Jogging Track
- Multi-play Court
- Cricket Pitch
- Swings Plaza
- Activity Lawn
- Eating Coves
- Movie Lounge



Reference Image



Reference Image

- Floor Games
- Stepped Seating
- Sculpture
- Seating Plaza between Trees
- Fruit Orchard
- Welcoming Entry Plaza
- Leisure Pavilion
- Ledge Seating
- Reflexology Path
- Sculpture Plaza
- Spill Over Plaza



Reference Image



Reference Image

Rendered Image



Reference Image

Cloud zone.

- Meditation Lawn
- Outdoor Gym
- Board Game Pavilion
- Cocoon Swing Plaza
- Celebration Lawn & Deck
- Movie Screen Wall
- Jacuzzi Deck with Seating
- Star Gazing Deck
- Group Seating's Plaza



Reference Image



Reference Image



Reference Image

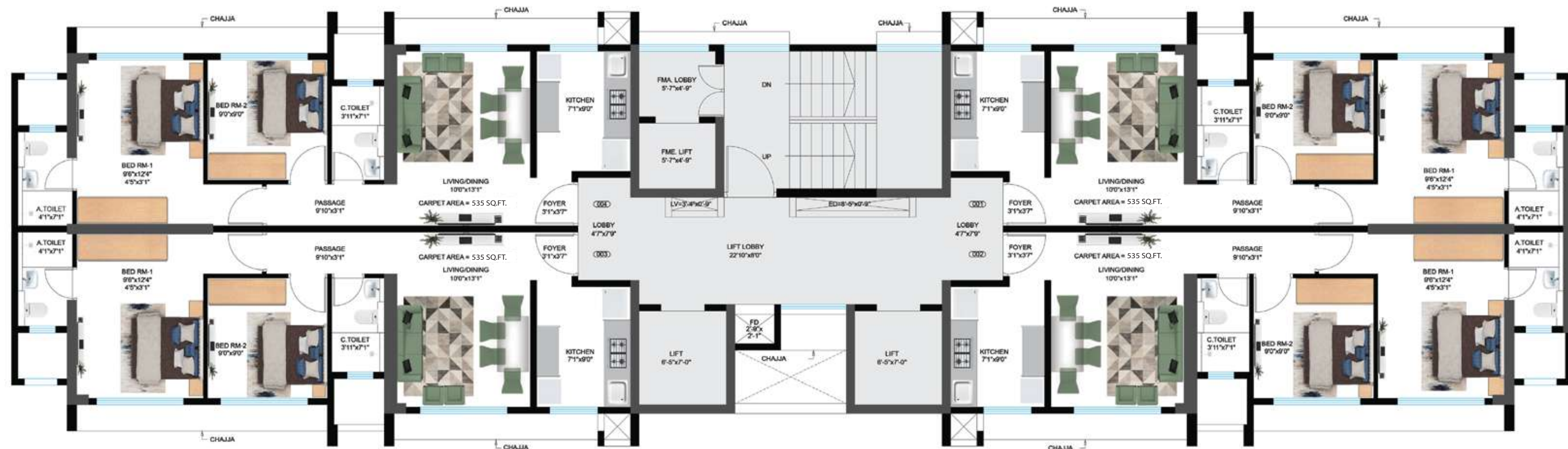


Reference Image

Typical Floor Plan

MOUNTAIN VIEW

MOUNTAIN VIEW



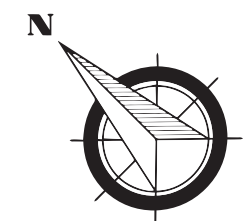
MUMBAI CITY VIEW

MUMBAI CITY VIEW

A floor plan meticulously arranged with 2 residences on each side,

Convenience is enhanced with 2 dedicated residence lifts and 1 service lift, on each floor.

The design makes it possible 3 & 4 BHK Jodi layouts within residences, promoting flexibility and customization.



Typical Unit Plan

CARPET AREA - 535 SQ.FT.

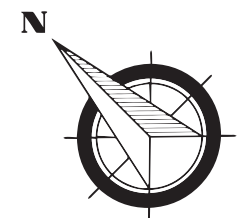


Efficiently planned 2BHK layout, minimizing space wastage.

Spacious 130 sq.ft rectangular living room for luxurious comfort.

Generously sized master bedroom measuring 9'6"x12'4" with dedicated wardrobe space.

Well-organized parallel kitchen with ample countertop space.



A DEAL THAT'S AS HEAVEN-SENT AS THE PROJECT.

The scale and nature of this development are truly one-of-a-kind, and such an opportunity may never arise again. Its fantastic commute infrastructure, and gateway location make it the ideal address from where to access the legacy South Mumbai ecosystem.

A short drive has you in the beating heart of South Mumbai. With its glorious buildings, the landmark streets and promenades. Its eateries, hangouts and its heritage. Its opulence, grandeur and SoBo spirit, all wait to welcome you, every time you venture south. Don't miss this chance to be a part of this extraordinary opportunity called Wadala.

Grab the opportunity to have it all by buying your home in the 100-acre private estate.

*T&C apply.



Reference Image

AMAZINGLY AJMERA:

A Global Phenomenon.





A LEGACY ACROSS

The Seven Seas.

India's leadership, Asia largest township.

In the 1980s, we transformed 265 acres of unknown land into a thriving community, making it Asia's largest township. Today you know it as Shanti Nagar in Mira Road.

Enthralling the world in the Queen's backyard.

We've established a prominent presence in the UK through five noteworthy projects. Particularly our development in Bishop's Avenue, the second most exclusive street in London. Here, where the average house price stands at an impressive 7.3 million pounds, we've redefined the benchmarks of luxury and opulence.





READY-TO-USE*

Amenities.

- Multi-Purpose Courts
- Futsal Court
- Squash Court
- Cricket Pitch
- Tennis Court
- Music Area
- Reflexology Trail
- Zip Line (Kids)
- Community Garden
- Activity Lawn
- Open-Air Gym with seating areas
- Walking Path
- Jogging Track
- Kid's Play Area
- Senior Citizen seating space

*Ready-to-use amenities are not within Ajmera Greenfinity and are part of 100-Acre private estate,



YOU HAVE BIG PLANS FOR YOUR HOME.

We have great plans for your life.

LITTLE *Big Things.*



Putting Kalyan on the map.

Yogi Dham, Kalyan's first integrated, mega development with a state-of-the-art clubhouse and luxury amenities was developed by Ajmera Group in partnership with the renowned Mehta Group. It was a real pleasure giving a real taste of lifestyle living to Kalyan.



Entertainment max, with the IMAX experience dome.

We revolutionised the movie-going experience with the country's first IMAX dome theatre, giving ardent big-screen fans a taste of widescreen movies the way it was filmed to be watched.



Pioneering shopatainment in Mumbai.

We developed the very first mall with a five-screen multiplex, Citi Mall at Andheri West, marking a milestone in the city's retail and entertainment landscape.



Putting the jungle in concrete jungle.

In a city bustling with steel and concrete, we carved out Mumbai's biggest private garden, covering 25 acres, at Bhakti Park, Wadala. This landmark project was a breath of fresh air for the city, rarely seen in residential locales before this.



A maker of destinations.

Our expertise lies in taking obscure locations and turning them into coveted destinations. Andheri, Mira Road, Wadala and Kalyan are just a few examples of our success stories. A reputation that has given us the nickname of 'Pincode creator', a badge we wear with pride.



BUILT ON TRUST

