

Location Map




VIRAT KRISHNAV
 2, 3 & 4 BHK HIGH END APARTMENTS
► Luxury You Dreamt. Lifestyle You Deserve ◄

Distances (Approximately)

Bus Stand Sindhi Camp	: 9.4Km
Railway Station (Jaipur Junction)	: 7.9Km
Schools	: 500 Meters
Commercial	: 500 Meters
Multiplex	: 3 Km
Hotel	: 2 Km
Bank	: 500 Meters
Hospital	: 2 Km

Site Add.:- Khasara No. 183/329 231 & 233, Maharana Pratap Marg, Next To Rangoli Garden, Vaishali Nagar West, Jaipur (Raj.)



VIRAT KRISHNAV
 PHASE II 3 BHK HIGH END APARTMENTS
► Luxury You Dreamt. Lifestyle You Deserve ◄



VIRAT GROUP
 Virat Build Home Pvt. Ltd.
 Virat Murli Infra LLP

VIRAT GROUP :
Corp. Office:-
 516, 5th Floor, Vaibhav Tower,
 Vaishali Nagar, Jaipur (Raj.)
 Email:- sales@vvirat.in, Web:- www.vvirat.in

ARCHITECTS:
Anoop Gupta & Associates
 Architects & Interior Consultants

For Bookings & Queries : +91 9314611511

The Project Consultant has the rights to change the plans, design & specifications or revise the scheme as & when necessary as per by laws and designer's convenience. This Brochure is not to be treated as part of the documents. It is only for easy display and information/ instruction regarding the Project.



Project Hallmark :

1. VIRAT KRISHNAV, the Architecture marvel situated at well developed and prime location of Vaishali Nagar West.
2. 65% Open area for common Facilities and Greenery.
3. Well ventilated apartments designed as per vastu norms.
4. Virat Vibes, an enormous club house spreading over approx 22000 sq.ft.
5. More than 50 amenities and facilities catering health, sports, leisure, safety, security, religious venue.
6. School, Market, Medical facilities, ATM With in 500 meters.
7. Railway Station (Jaipur Junction) approx 7.9 Kms.
8. Mall, Hotels, Multiplex, Hospital, at 3-5 minutes drive.





Unmatched luxury in the heart of city



Smart Card Entry



Reception



Guest Lounge

Lavish Lifestyle Befitting 5 Star Residence



Swimming Pool



Deck Pool With Screen



Jacuzzi



Roof Top Cafeteria

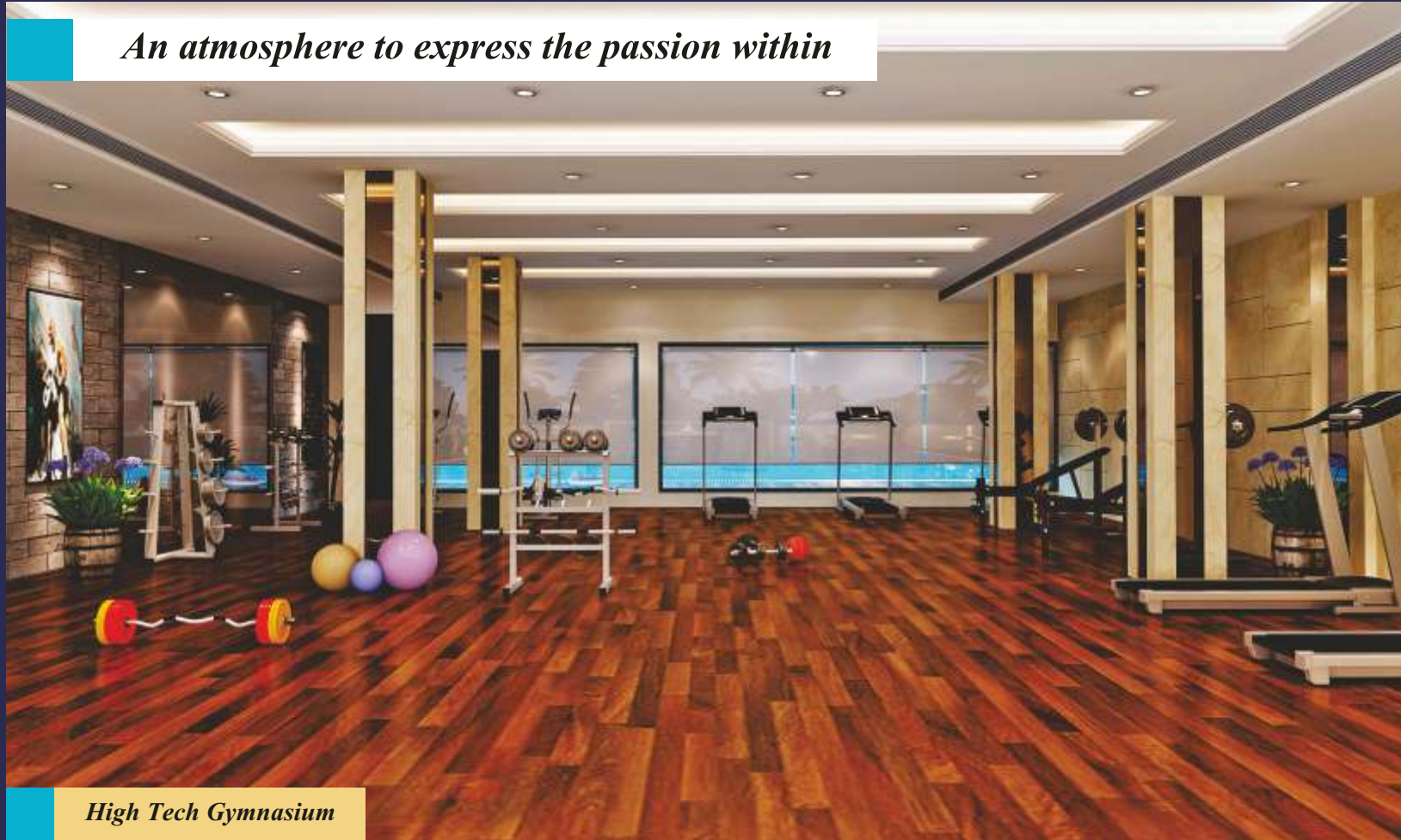


Sauna



Mini Theater

An atmosphere to express the passion within



High Tech Gymnasium



Yoga & Meditation Hall



Basketball Arena



Roof Top Jogging Track



Table Tennis



Badminton Court



Cricket Net Pitch

The environment which spreads cheer & joy



Cafeteria



Kids Play Area



Temple



Indoor Games



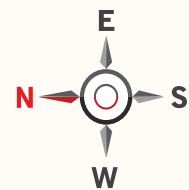
Gazebo



Party Lawn

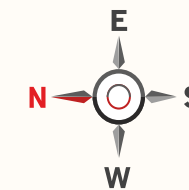


Multipurpose Hall



Indoor Amenities

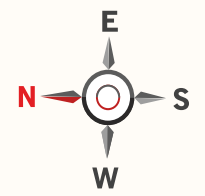
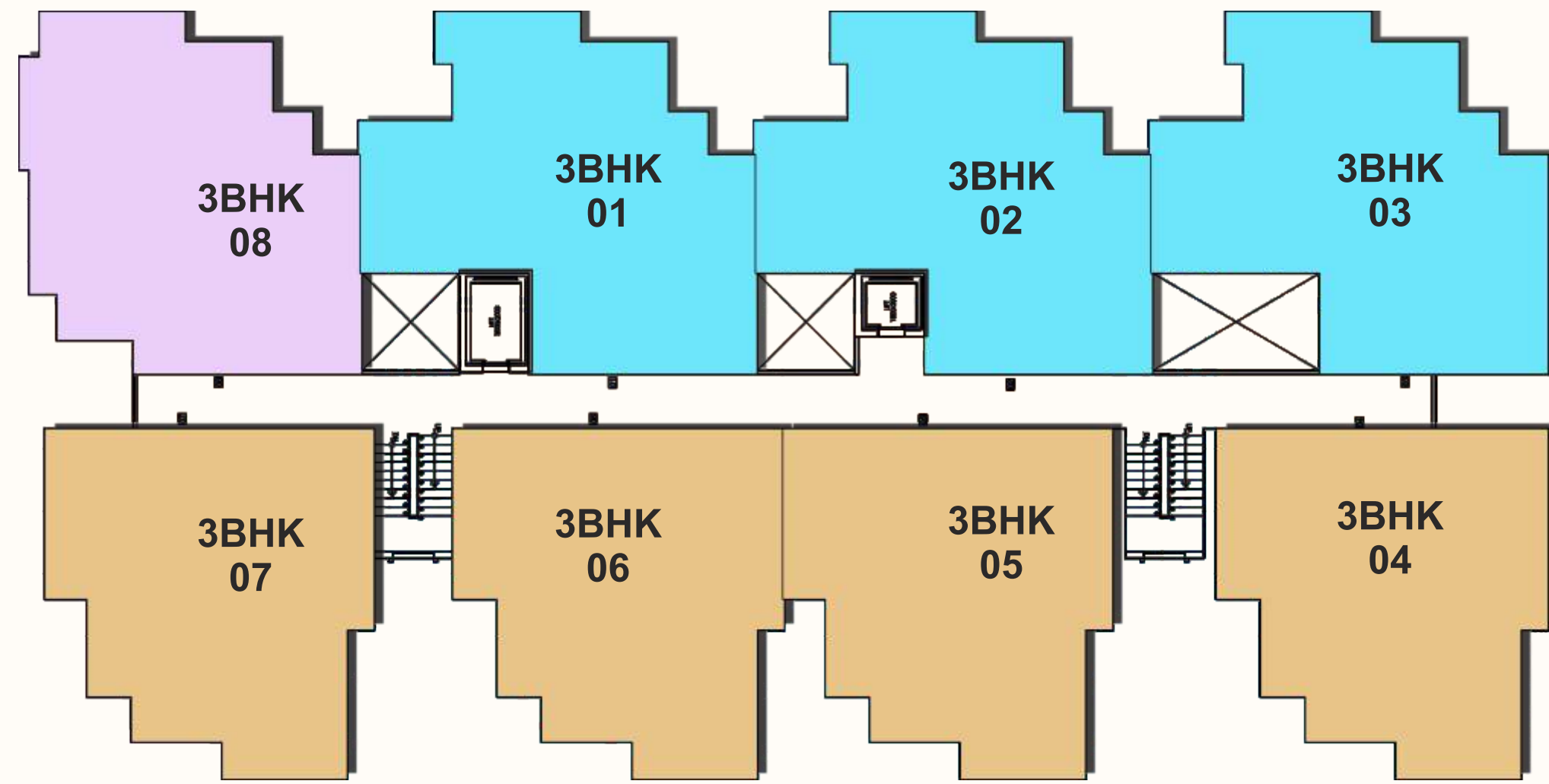
- | | | | |
|------------------------|------------------|---------------|-------------|
| 01. Multi Purpose Hall | 04. Mini Theater | 07. Yoga | 10. Steam |
| 02. Entrance Lobby | 05. Table Tennis | 08. Gym | 11. Jacuzzi |
| 03. Cafeteria | 06. Indoor Games | 09. Kids Zone | |



Legends

- | | | | | |
|---------------------|-------------------|-----------------------|------------|--------------------|
| 01. Entrance Gate | 04. Swimming Pool | 07. Basketball Arena | 10. Temple | 13. Kids Play Area |
| 02. Party Lawn | 05. Kids Pool | 08. Cricket Net Pitch | 11. Gazebo | 14. Fountain |
| 03. Badminton Court | 06. Parking | 09. Sit Outs | 12. Lawn | |

Typical Floor Plan



3BHK TYPE -01

Unit Floor plan

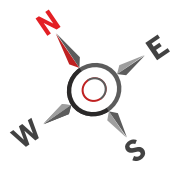
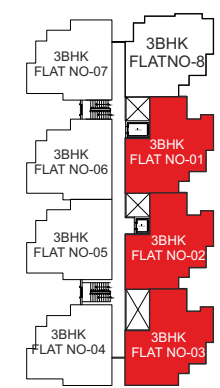
Carpet Area=1013 sq.ft.

Built Up Area =1266 sq.ft.

Super Built Up Area= 1688 sq.ft



KEY MAP



3BHK TYPE -02

Unit Floor plan

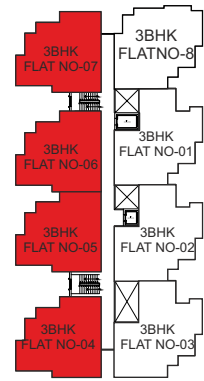
Carpet Area=989sq.ft.

Built Up Area =1180 sq.ft.

Super Built Up Area= 1573 sq.ft



KEY MAP



3BHK TYPE -03

Unit Floor plan

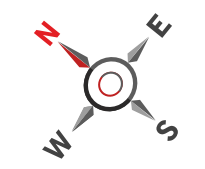
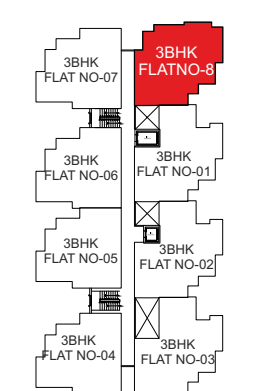
Carpet Area=1020sq.ft.

Built Up Area =1249 sq.ft.

Super Built Up Area=1665 sq.ft



KEY MAP



Salient Features :-

- ▲ A project by Virat Group, reputed and trusted group.
- ▲ On Call Medical Facilities.
- ▲ In House Shopping Center.
- ▲ Premium Construction Quality.
- ▲ High tech & Ultra Modern Clubhouse.
- ▲ Vastu Oriented Apartments.
- ▲ Roof Top Deck Pool.
- ▲ Roof Top Jogging Track.
- ▲ Roof Top Cafeteria.
- ▲ Roof Top Tennis Court.
- ▲ Centrally Ac Ground Floor.
- ▲ Valet Parking for Guest.
- ▲ Wi-fi Zone.
- ▲ 100% Power backup (Silent DG sets for lifts & common areas).
- ▲ 4 Tier security system (Smart card entry, 24X7 guard, Intercom & CCTV surveillance).
- ▲ Reserved Car Parking for each Flat.
- ▲ Efficient Fire Fighting and Rain water Harvesting system.
- ▲ Earth Quake Resistant Framed Structure.
- ▲ Gas Pipe Line.
- ▲ STP Plant.



Roof Top Tennis Court



In House Shopping Center



CCTV Camera

Specification :-

BED ROOMS:-

- Floor : Premium Class Flooring of Vitrified Tiles in Bedroom
- Walls : Acrylic Paint on Putty (Asian/ Nerolac or Equivalent)
- Ceiling : Premium quality paint (Asian/Nerolac or Equivalent)
- Wardrobes : Projected Wardrobes Space
- Door & Windows : Wooden / UPVC Door Windows
- Services : Provision for Air Conditioners



KITCHEN:-



- Counter : Granite Working Counters
- Fitting/Fixtures : Stainless Steel Sink With CP Fittings
- Electric Point : Provision for RO/Microwave/Mixer/Refrigerator etc.
- Floor : Anti skid Tiles.

BALCONIES:-



- Floor : Terazo/ Ceramic Tiles
- Ceiling : Premium quality paint
- Doors & Windows : UPVC / Aluminum Door Windows.

LIVING/ DINING:-



- Floor : Vitrified Tiles Laid in Designer Pattern
- Walls : Acrylic Paint on Putty (Asian/ Nerolac or Equivalent)
- Ceiling : Premium quality paint
- Door & Windows : Wooden / UPVC Door Windows
- Services : Provision for Air Conditioners

TOILET:-



- Walls : Combination of Designer Tiles and Premium quality paint
- Floor : Anti Skid Ceramic Tiles.
- Ceiling : Premium quality paint
- Fixtures/ Assess : C.P. Fitting Premium Brand
- Doors : Tough ISI Mark Flush Doors
- Provisions : Provision for Geyser and Exhaust Fan
- Door & Windows : Wooden / UPVC Door Windows

Finance available from
all Leading Banks

