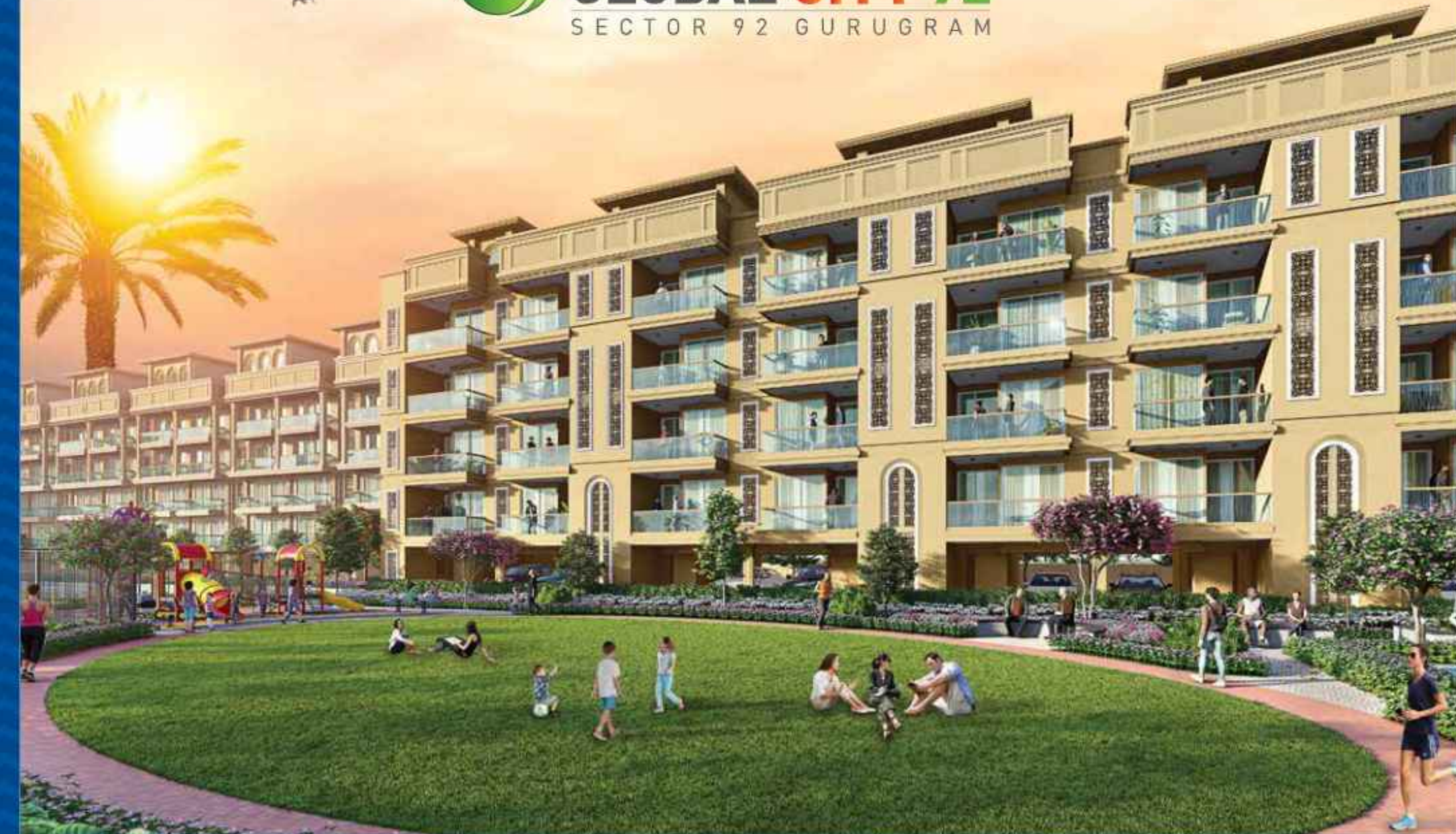


RERA REGISTRATION NO.: RC/REP/HARERA/GGM/470/202/2021/38
RC/REP/HARERA/GGM/471/203/2021/39
(www.haryanarera.gov.in)

ASCEND TO THE **SIGNATURE** — LIFE —

 **SIGNATURE
GLOBAL CITY 92**
SECTOR 92 GURUGRAM



AN ISO 9001:2015, 14001:2015, 45001:2018 CERTIFIED COMPANY

SIGNATURE INFRABUILD PRIVATE LIMITED | CIN NO. : U70100DL2013PTC247676

REGD. OFFICE: 13TH FLOOR, 28 BARAKHAMBA, ROAD, CONNAUGHT PLACE, NEW DELHI - 110001

CORP. OFFICE: GROUND FLOOR, TOWER-A, SIGNATURE TOWER, SOUTH CITY-1, GURUGRAM, HARYANA- 122001

www.signatureglobal.in

DISCLAIMER:

PROMOTER URGES EVERY APPLICANT TO INSPECT THE PROJECT SITE AND SHALL NOT MERELY RELY UPON OR TO BE INFLUENCED BY ANY ARCHITECTURAL IMPRESSION, PLAN OR SALES BROCHURE AND, THEREFORE, REQUESTED TO MAKE PERSONAL JUDGMENT PRIOR TO SUBMITTING AN APPLICATION FOR ALLOTMENT. THE PROJECT IS BEING DEVELOPED IN PHASES, HENCE, CERTAIN FACILITIES/AMENITIES ETC. MAY BE USED BY ALLOTTEE OF OTHER PHASES UNLESS OTHERWISE STATED. ALL THE IMAGES, VISUALS, MATERIALS AND INFORMATION CONTAINED HEREIN ARE PURELY CREATIVE/ARTISTIC AND MAY NOT BE ACTUAL REPRESENTATIONS OF THE PRODUCTS AND/OR ANY AMENITIES. FURTHER, THE ACTUAL DESIGN MAY VARY IN THE FIT AND FINISHED FORM THE ONE DISPLAYED ABOVE. PROJECT DETAILS/SPECIFICATIONS CAN ALSO BE ACCESSED AT THE OFFICE OF HARYANA REAL ESTATE REGULATORY AUTHORITY WEBSITE: [HTTPS://HARYANARERA.GOV.IN/](https://haryanarera.gov.in/). JOURNEY TIME SHOWN, IF ANY, IS BASED UPON GOOGLE MAPS, WHICH MAY VARY AS PER THE TRAFFIC AT A RELEVANT POINT OF TIME.

RATES MENTIONED DO NOT INCLUDE GST AND OTHER STATUTORY CHARGES, IF APPLICABLE. T & C APPLY. 1 SQ. MTR. = 10.7639 SQ. FT.

FOR ANY QUERY PLEASE SPEAK TO OUR CUSTOMER RELATIONSHIP MANAGER

DESIGNED BY PADMA BHUSHAN ARCHITECT HAFEEZ CONTRACTOR

The logo for Signature Global City 92. It features a green circular icon with a white stylized 'S' on the left. To the right, the text 'SIGNATURE GLOBAL CITY 92' is displayed in a bold, sans-serif font. 'SIGNATURE' and 'GLOBAL' are in black, 'CITY' is in red, and '92' is in green. A yellow house-shaped icon is positioned above the word 'CITY'. Below the main text, 'SECTOR 92 GURUGRAM' is written in a smaller, black, all-caps font.

**SIGNATURE
GLOBAL CITY 92**
SECTOR 92 GURUGRAM

Rediscover a good lifestyle in 10.30 acres; enjoy a well-connected life with proximity to major highways. This is where you can meet and entertain your guests at a specially curated Private Service Area. This residential complex is an epitome of green building; constructed with eco-friendly processes and practices. Here, rejuvenate in nature's freshness; enjoy a touch of serenity and peace in the society. To make your life comfortable and hassle-free here, world class amenities are provided along with high-end security.





LOCATION MAP

HOSPITALS

Aarvy Hospital
 Krishna Hospital
 Global Hospital & Trauma Centre
 ARc Multispeciality hospital

CONNECTIVITY

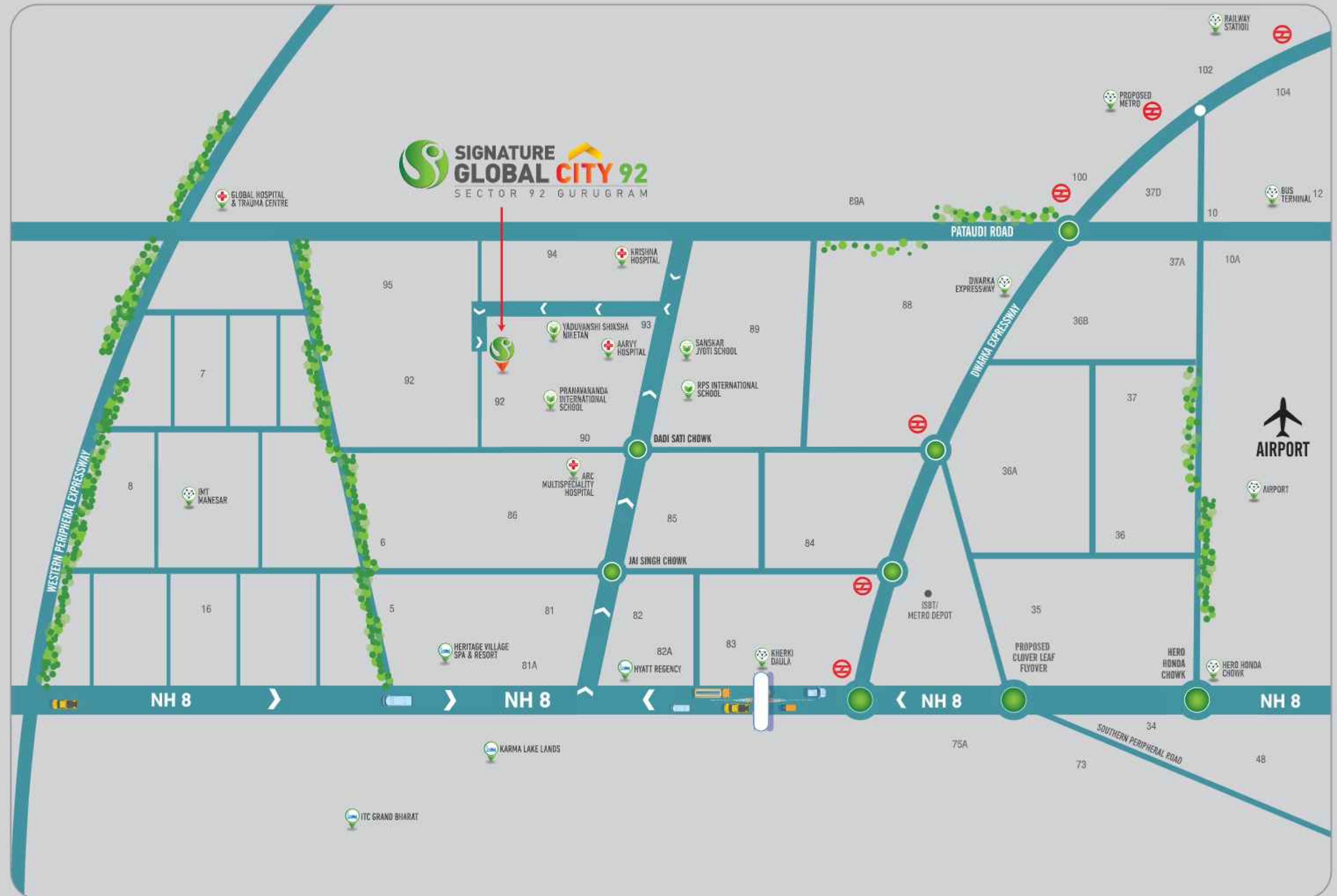
Dwarka Expressway
 Hero Honda Chowk
 Kherki Daula, NH-8
 Airport
 IMT Manesar
 Railway Station
 Bus Terminal
 Proposed Metro

SCHOOLS

RPS International School
 Yaduvanshi Shiksha Niketan
 Pranavananda International School
 Sanskar Jyoti School

HOTELS

Hyatt Regency
 Heritage Village Spa & Resort
 ITC Grand Bharat
 Karma Lake Lands





GREAT FEATURES AROUND THE PROJECT

- Sector 92 enjoys its proximity to key employment hubs of the city like Cyber City, Udyog Vihar, Golf Course Extension Road, Sohna, Manesar, etc.
- Major industrial employment centre of Manesar is in close proximity.
- Kadipur industrial area is in close vicinity.
- Moreover, there is easy connectivity to the city's employment hubs through Pataudi Road, NH8, Dwarka Expressway, Western Peripheral Expressway and Southern Peripheral Road. Another point about this sector which makes it an ideal residential destination is strong social infrastructure in the neighbourhood and proposed metro line.
- The sector has witnessed development of several residential projects in the vicinity.
- Residential projects in these places are ideal for those who choose to surround themselves by abundant greenery with the soothing sound of nature.
- Well established network of Schools like Ipsaa: Pre-school, Pranavananda International School, Rao Bharat Singh Intl School, Hospitals like Genesis Hospital, Medeor Hospital, Manesar, ESIC Hospital, Manesar, Medanta Medicity, Shopping Malls, Retail Markets and Five Star Hotels.
- The sector has witnessed good returns in terms of rent because it has an ideal location for the people who are always on the move and work in the private and retail sectors.
- Easy access to international airport via NH-8 and Dwarka Expressway





SIGNATURE GLOBAL CITY 92



ENJOY
AN URBAN LIFESTYLE,
IN THE LAP OF NATURE.




**WALK UP
THE PATH TO AN
UPSCALE LIFE.**




**BIG ON SPACE,
FOR FUN AND GAMES.**



KIDS' PLAY AREA




**BADMINTON
COURT**

AMENITIES



DEDICATED LIFTS
FOR STILT+ 4 FLOORS



DEDICATED
CAR PARKING



OUTDOOR GYM*



JOGGING TRACK



OPEN-AIR
AMPHITHEATRE*



SKATING RINK



BUTTERFLY
GARDEN*



MULTIPURPOSE
LAWN



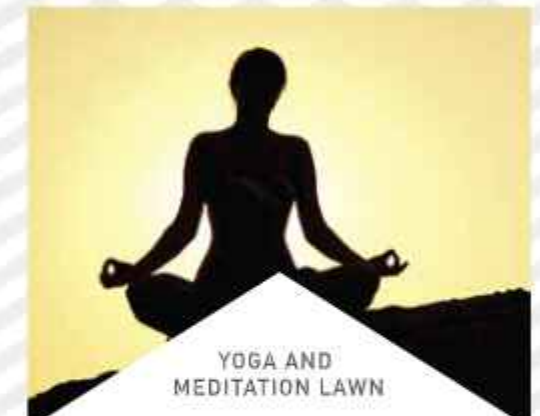
BADMINTON
COURT



SWIMMING POOL*



CLUBHOUSE*



YOGA AND
MEDITATION LAWN



HALF BASKETBALL
COURT



TODDLERS'
PLAY AREA



PET'S AREA*



CRICKET NET*



* FUTURE DEVELOPMENT IN PHASE 2

SPECIAL FEATURES



MODULAR KITCHEN



ADDITIONAL SPACE
FOR WORK FROM HOME



FULLY
AIR-CONDITIONED
PREMIUM FLOOR



PRIVATE
SERVICE AREA



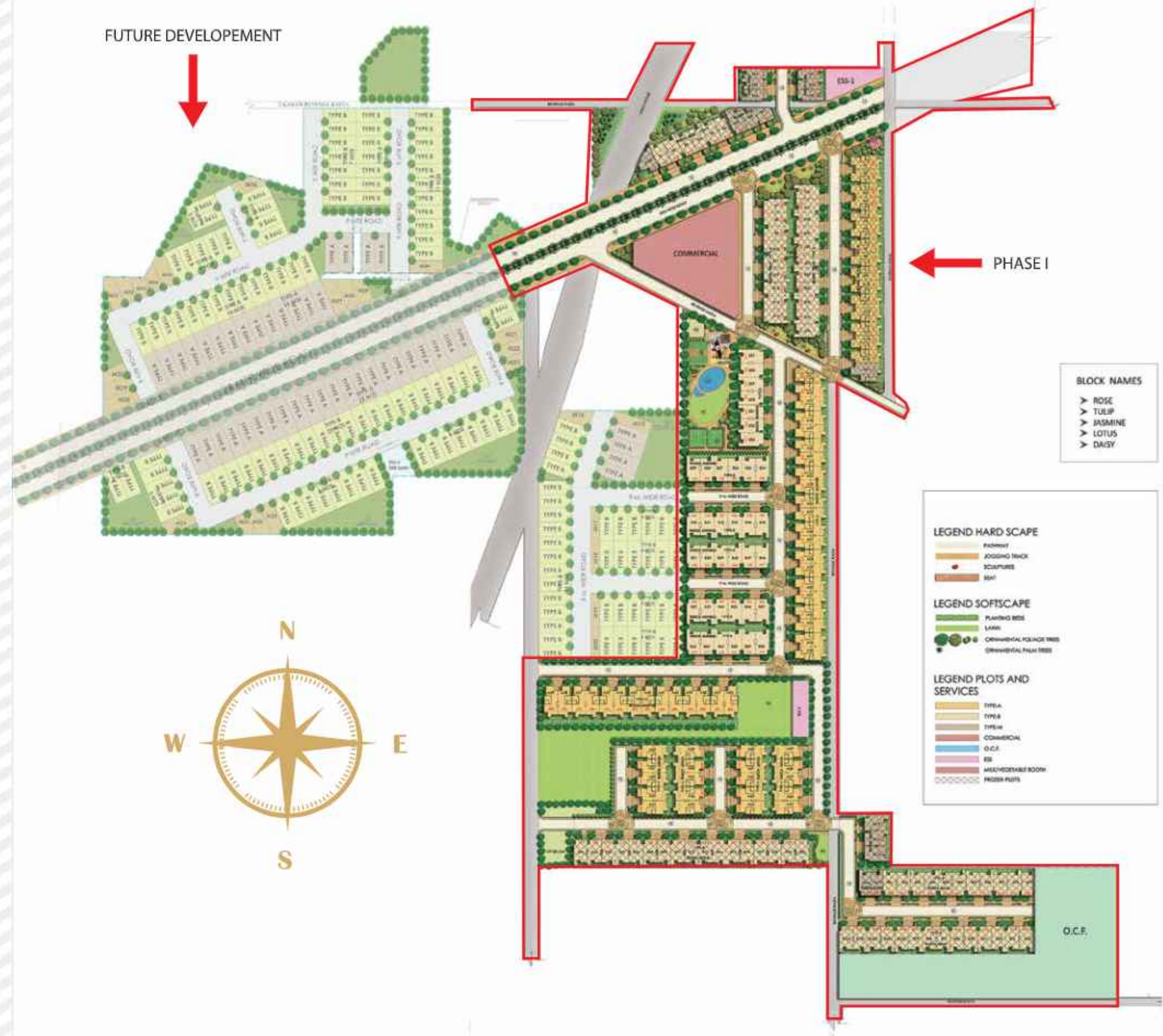
YOUR GREEN
SPACE ON TERRACE



AMENITIES

- 01 KID'S PLAY AREA
- 02 BADMINTON COURT
- 03 SKATING RINK
- 04 HALF BASKET BALL COURT
- 05 JOGGING TRACK
- 06 PATHWAY
- 07 SHADED PAVILION
- 08 LAWN
- 09 SEATING AREA
- 10 REFLEXOLOGY GARDEN
- 11 PLANTER CUM SEATING
- 12 MOUNDS
- 13 DRIVEWAY
- 14 ACCENT PAVING

SITE PLAN



**BLOCK
NUMBERING
PLAN**

| Sr. No. | BLOCK TYPE | BLOCK NO. | PLOT TYPE | PLOT NO. | FROZEN / UNFROZEN |
|---------|------------|-----------|-----------|----------|-------------------|
| 1 | ROSE | R01 | M | M1 | FROZEN |
| 2 | ROSE | R02 | M | M2 | FROZEN |
| 3 | ROSE | R03 | M | M3 | FROZEN |
| 4 | ROSE | R04 | M | M4 | FROZEN |
| 5 | ROSE | R05 | M | M5 | FROZEN |
| 6 | ROSE | R06 | M | M6 | FROZEN |
| 7 | ROSE | R07 | M | M7 | FROZEN |
| 8 | ROSE | R08 | M | M8 | FROZEN |
| 9 | ROSE | R09 | M | M9 | FROZEN |
| 10 | ROSE | R10 | B | B6 | FROZEN |
| 11 | ROSE | R11 | B | B5 | FROZEN |
| 12 | ROSE | R12 | B | B4 | FROZEN |
| 13 | ROSE | R13 | B | B3 | FROZEN |
| 14 | ROSE | R14 | B | B2 | FROZEN |
| 15 | ROSE | R15 | B | B1 | FROZEN |
| 16 | ROSE | R16 | M | M10 | FROZEN |
| 17 | TULIP | T03 | A | A1 | FROZEN |
| 18 | TULIP | T04 | A | A2 | FROZEN |
| 19 | TULIP | T05 | A | A3 | FROZEN |
| 20 | TULIP | T06 | A | A4 | FROZEN |
| 21 | TULIP | T07 | A | A5 | FROZEN |
| 22 | TULIP | T08 | A | A6 | FROZEN |
| 23 | TULIP | T09 | A | A7 | FROZEN |
| 24 | TULIP | T10 | A | A8 | FROZEN |
| 25 | TULIP | T11 | A | A9 | FROZEN |
| 26 | TULIP | T12 | A | A10 | FROZEN |
| 27 | TULIP | T13 | A | A11 | FROZEN |
| 28 | TULIP | T14 | A | A12 | FROZEN |
| 29 | TULIP | T15 | A | A13 | FROZEN |
| 30 | TULIP | T16 | A | A14 | FROZEN |
| 31 | TULIP | T17 | A | A15 | FROZEN |
| 32 | TULIP | T18 | M | M11 | FROZEN |
| 33 | TULIP | T19 | B | B26 | FROZEN |
| 34 | TULIP | T20 | B | B25 | FROZEN |
| 35 | TULIP | T21 | B | B24 | FROZEN |
| 36 | TULIP | T22 | B | B23 | FROZEN |
| 37 | TULIP | T23 | B | B22 | FROZEN |
| 38 | TULIP | T24 | B | B21 | FROZEN |
| 39 | TULIP | T25 | B | B20 | FROZEN |
| 40 | TULIP | T26 | B | B19 | FROZEN |
| 41 | TULIP | T27 | B | B18 | FROZEN |

| Sr. No. | BLOCK TYPE | BLOCK NO. | PLOT TYPE | PLOT NO. | FROZEN / UNFROZEN |
|---------|------------|-----------|-----------|----------|-------------------|
| 42 | TULIP | T28 | B | B17 | FROZEN |
| 43 | TULIP | T29 | B | B16 | FROZEN |
| 44 | TULIP | T30 | B | B7 | FROZEN |
| 45 | TULIP | T31 | B | B8 | FROZEN |
| 46 | TULIP | T32 | B | B9 | FROZEN |
| 47 | TULIP | T33 | B | B10 | FROZEN |
| 48 | TULIP | T34 | B | B11 | FROZEN |
| 49 | TULIP | T35 | B | B12 | FROZEN |
| 50 | TULIP | T36 | B | B13 | FROZEN |
| 51 | TULIP | T37 | B | B14 | FROZEN |
| 52 | TULIP | T38 | B | B15 | FROZEN |
| 53 | JASMINE | J01 | A | A16 | UNFROZEN |
| 54 | JASMINE | J02 | A | A17 | UNFROZEN |
| 55 | JASMINE | J03 | A | A18 | UNFROZEN |
| 56 | JASMINE | J04 | A | A19 | UNFROZEN |
| 57 | JASMINE | J05 | A | A20 | UNFROZEN |
| 58 | JASMINE | J06 | A | A21 | UNFROZEN |
| 59 | JASMINE | J07 | A | A22 | UNFROZEN |
| 60 | JASMINE | J08 | A | A23 | UNFROZEN |
| 61 | JASMINE | J09 | A | A24 | UNFROZEN |
| 62 | JASMINE | J10 | A | A25 | UNFROZEN |
| 63 | JASMINE | J11 | A | A26 | UNFROZEN |
| 64 | JASMINE | J12 | A | A27 | UNFROZEN |
| 65 | JASMINE | J13 | A | A28 | UNFROZEN |
| 66 | JASMINE | J14 | A | A29 | UNFROZEN |
| 67 | JASMINE | J15 | A | A30 | UNFROZEN |
| 68 | JASMINE | J16 | A | A31 | UNFROZEN |
| 69 | JASMINE | J17 | A | A32 | UNFROZEN |
| 70 | JASMINE | J18 | A | A33 | UNFROZEN |
| 71 | JASMINE | J19 | A | A34 | UNFROZEN |
| 72 | JASMINE | J20 | A | A35 | UNFROZEN |
| 73 | JASMINE | J21 | B | B27 | UNFROZEN |
| 74 | JASMINE | J22 | B | B28 | UNFROZEN |
| 75 | JASMINE | J23 | B | B29 | UNFROZEN |
| 76 | JASMINE | J24 | B | B30 | UNFROZEN |
| 77 | JASMINE | J25 | B | B31 | UNFROZEN |
| 78 | JASMINE | J26 | B | B32 | UNFROZEN |
| 79 | JASMINE | J27 | B | B33 | UNFROZEN |
| 80 | JASMINE | J28 | B | B34 | UNFROZEN |
| 81 | JASMINE | J29 | B | B35 | UNFROZEN |
| 82 | JASMINE | J30 | B | B36 | UNFROZEN |

| Sr. No. | BLOCK TYPE | BLOCK NO. | PLOT TYPE | PLOT NO. | FROZEN / UNFROZEN |
|---------|------------|-----------|-----------|----------|-------------------|
| 83 | JASMINE | J31 | B | B37 | UNFROZEN |
| 84 | JASMINE | J32 | B | B38 | UNFROZEN |
| 85 | JASMINE | J33 | B | B39 | UNFROZEN |
| 86 | JASMINE | J34 | B | B45 | UNFROZEN |
| 87 | JASMINE | J35 | B | B44 | UNFROZEN |
| 88 | JASMINE | J36 | B | B43 | UNFROZEN |
| 89 | JASMINE | J37 | B | B42 | UNFROZEN |
| 90 | JASMINE | J38 | B | B41 | UNFROZEN |
| 91 | JASMINE | J39 | B | B40 | UNFROZEN |
| 92 | JASMINE | J47 | B | B46 | UNFROZEN |
| 93 | JASMINE | J48 | B | B47 | UNFROZEN |
| 94 | JASMINE | J49 | B | B48 | UNFROZEN |
| 95 | JASMINE | J50 | B | B49 | UNFROZEN |
| 96 | JASMINE | J51 | B | B50 | FROZEN |
| 97 | JASMINE | J52 | B | B51 | FROZEN |
| 98 | JASMINE | J60 | B | B57 | FROZEN |
| 99 | JASMINE | J61 | B | B56 | FROZEN |
| 100 | JASMINE | J62 | B | B55 | FROZEN |
| 101 | JASMINE | J63 | B | B54 | FROZEN |
| 102 | JASMINE | J64 | B | B53 | FROZEN |
| 103 | JASMINE | J65 | B | B52 | FROZEN |
| 104 | JASMINE | J73 | B | B58 | FROZEN |
| 105 | JASMINE | J74 | B | B59 | FROZEN |
| 106 | JASMINE | J75 | B | B60 | FROZEN |
| 107 | JASMINE | J76 | B | B61 | UNFROZEN |
| 108 | JASMINE | J77 | B | B62 | UNFROZEN |
| 109 | JASMINE | J78 | B | B63 | UNFROZEN |
| 110 | JASMINE | J86 | B | A36 | UNFROZEN |
| 111 | JASMINE | J87 | B | A37 | UNFROZEN |
| 112 | JASMINE | J88 | B | A38 | UNFROZEN |
| 113 | JASMINE | J89 | B | A39 | UNFROZEN |
| 114 | JASMINE | J90 | B | A40 | UNFROZEN |
| 115 | JASMINE | J91 | B | A41 | UNFROZEN |
| 116 | JASMINE | J92 | B | A42 | UNFROZEN |
| 117 | JASMINE | J93 | B | A43 | UNFROZEN |
| 118 | JASMINE | J94 | B | A44 | UNFROZEN |
| 119 | JASMINE | J95 | B | A45 | UNFROZEN |
| 120 | JASMINE | J96 | B | A46 | UNFROZEN |
| 121 | JASMINE | J97 | B | A47 | UNFROZEN |
| 122 | JASMINE | J98 | B | A48 | UNFROZEN |
| 123 | JASMINE | J99 | B | A49 | UNFROZEN |

| Sr. No. | BLOCK TYPE | BLOCK NO. | PLOT TYPE | PLOT NO. | FROZEN / UNFROZEN |
|---------|------------|-----------|-----------|----------|-------------------|
| 124 | JASMINE | J100 | M | M12 | FROZEN |
| 125 | LOTUS | L01 | A | A50 | UNFROZEN |
| 126 | LOTUS | L02 | A | A51 | UNFROZEN |
| 127 | LOTUS | L03 | A | A52 | UNFROZEN |
| 128 | LOTUS | L04 | A | A53 | UNFROZEN |
| 129 | LOTUS | L05 | A | A54 | UNFROZEN |
| 130 | LOTUS | L06 | A | A55 | UNFROZEN |
| 131 | LOTUS | L07 | A | A56 | UNFROZEN |
| 132 | LOTUS | L08 | A | A57 | UNFROZEN |
| 133 | LOTUS | L09 | A | A58 | UNFROZEN |
| 134 | LOTUS | L10 | A | A59 | UNFROZEN |
| 135 | LOTUS | L11 | A | A60 | UNFROZEN |
| 136 | LOTUS | L12 | A | A61 | UNFROZEN |
| 137 | LOTUS | L13 | A | A62 | UNFROZEN |
| 138 | LOTUS | L14 | A | A63 | UNFROZEN |
| 139 | LOTUS | L15 | A | A64 | UNFROZEN |
| 140 | LOTUS | L16 | A | A65 | UNFROZEN |
| 141 | LOTUS | L17 | A | A66 | UNFROZEN |
| 142 | LOTUS | L18 | A | A67 | UNFROZEN |
| 143 | LOTUS | L19 | A | A68 | UNFROZEN |
| 144 | LOTUS | L20 | A | A69 | UNFROZEN |
| 145 | LOTUS | L21 | B | B64 | FROZEN |
| 146 | LOTUS | L22 | B | B65 | FROZEN |
| 147 | LOTUS | L23 | B | B66 | FROZEN |
| 148 | LOTUS | L24 | B | B67 | FROZEN |
| 149 | LOTUS | L25 | B | B68 | FROZEN |
| 150 | LOTUS | L26 | B | B69 | FROZEN |
| 151 | LOTUS | L27 | B | B70 | FROZEN |
| 152 | LOTUS | L28 | B | B71 | FROZEN |
| 153 | LOTUS | L29 | B | B72 | FROZEN |
| 154 | LOTUS | L30 | B | B73 | FROZEN |
| 155 | LOTUS | L31 | B | B74 | FROZEN |
| 156 | LOTUS | L32 | B | B75 | FROZEN |
| 157 | LOTUS | L33 | B | B76 | FROZEN |
| 158 | LOTUS | L34 | B | B77 | FROZEN |
| 159 | LOTUS | L35 | B | B78 | FROZEN |
| 160 | LOTUS | L36 | B | B79 | FROZEN |
| 161 | LOTUS | L37 | B | B80 | FROZEN |
| 162 | DAISY | D01 | M | M13 | FROZEN |
| 163 | DAISY | D02 | M | M14 | FROZEN |
| 164 | DAISY | D03 | M | M15 | FROZEN |

| Sr. No. | BLOCK TYPE | BLOCK NO. | PLOT TYPE | PLOT NO. | FROZEN / UNFROZEN |
|---------|------------|-----------|-----------|----------|-------------------|
| 165 | DAISY | D04 | M | M16 | FROZEN |
| 166 | DAISY | D05 | M | M17 | FROZEN |
| 167 | DAISY | D06 | B | B81 | FROZEN |
| 168 | DAISY | D07 | B | B82 | FROZEN |
| 169 | DAISY | D08 | B | B83 | FROZEN |
| 170 | DAISY | D09 | B | B84 | FROZEN |
| 171 | DAISY | D10 | B | B85 | FROZEN |
| 172 | DAISY | D11 | B | B86 | FROZEN |
| 173 | DAISY | D12 | B | B87 | FROZEN |
| 174 | DAISY | D13 | B | B88 | FROZEN |
| 175 | DAISY | D14 | B | B89 | FROZEN |
| 176 | DAISY | D15 | B | B90 | FROZEN |
| 177 | DAISY | D16 | B | B91 | FROZEN |
| 178 | DAISY | D17 | B | M18 | FROZEN |
| 179 | DAISY | D18 | B | B92 | FROZEN |
| 180 | DAISY | D19 | B | B94 | FROZEN |
| 181 | DAISY | D20 | B | B94 | FROZEN |
| 182 | DAISY | D21 | B | B95 | FROZEN |
| 183 | DAISY | D22 | B | B96 | FROZEN |
| 184 | DAISY | D23 | B | B97 | FROZEN |
| 185 | DAISY | D24 | B | B98 | FROZEN |
| 186 | DAISY | D25 | B | B99 | FROZEN |
| 187 | DAISY | D26 | B | B100 | FROZEN |
| 188 | DAISY | D27 | B | B101 | FROZEN |
| 189 | DAISY | D28 | B | B102 | FROZEN |
| 190 | DAISY | D29 | B | B103 | FROZEN |
| 191 | DAISY | D30 | B | B104 | FROZEN |

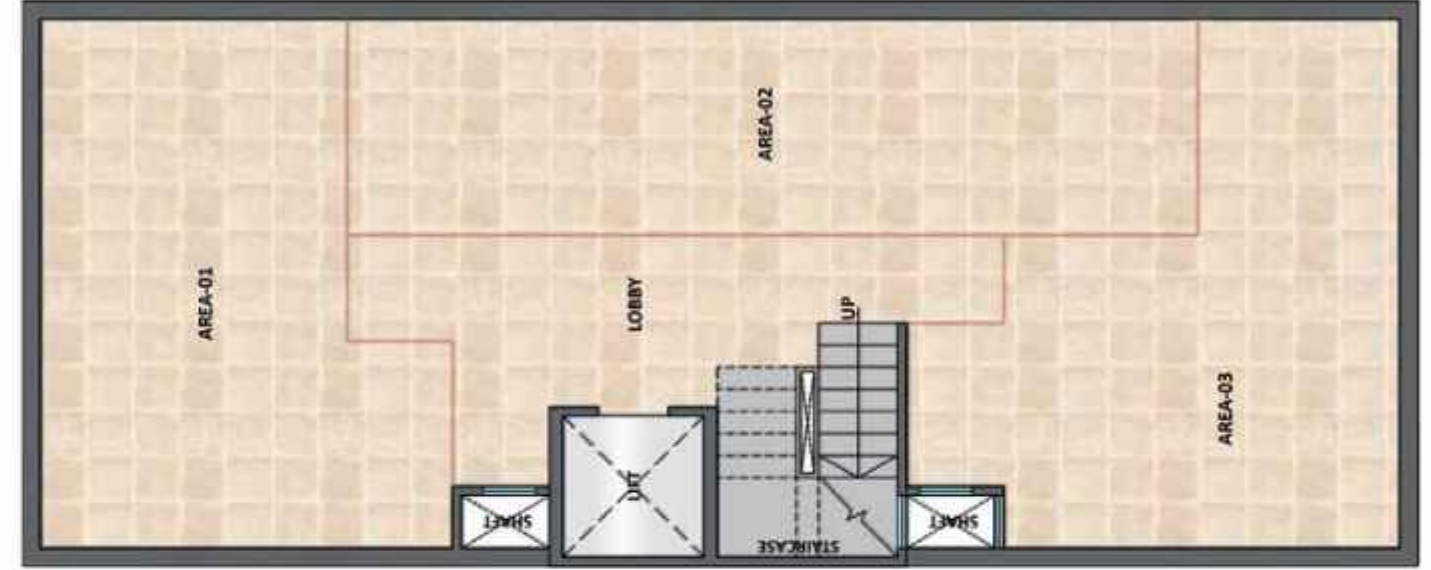


TYPE-A
3BHK + 2 TOILET

STILT FLOOR PLAN



BASEMENT PLAN



TERRACE PLAN

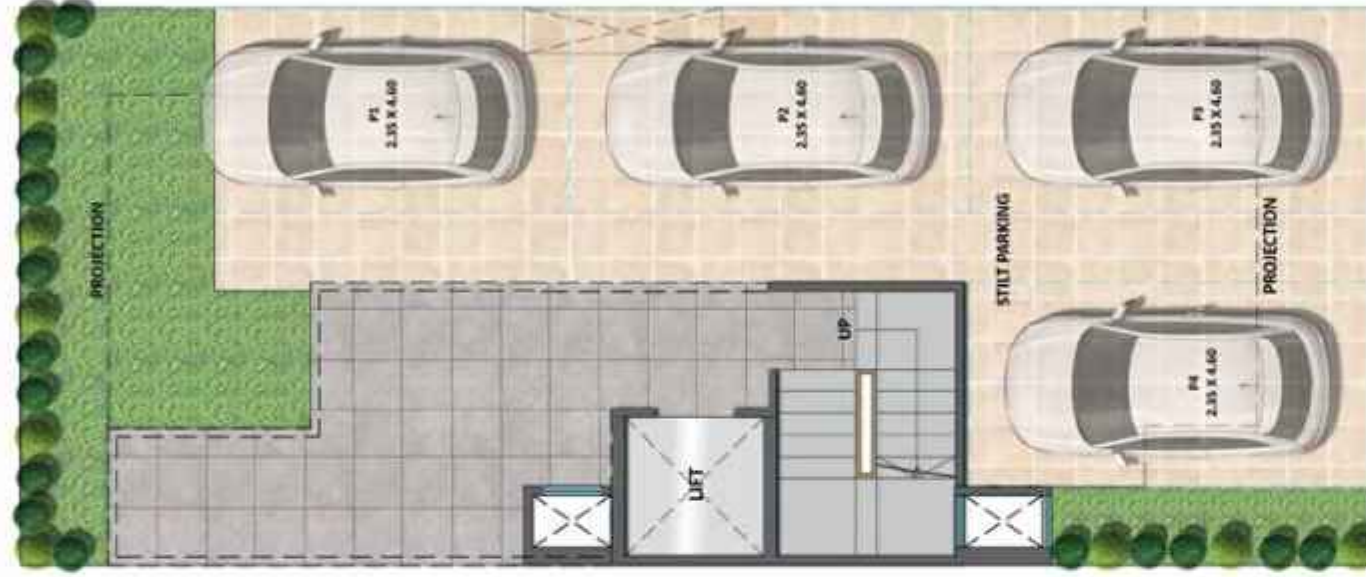


UNIT PLAN

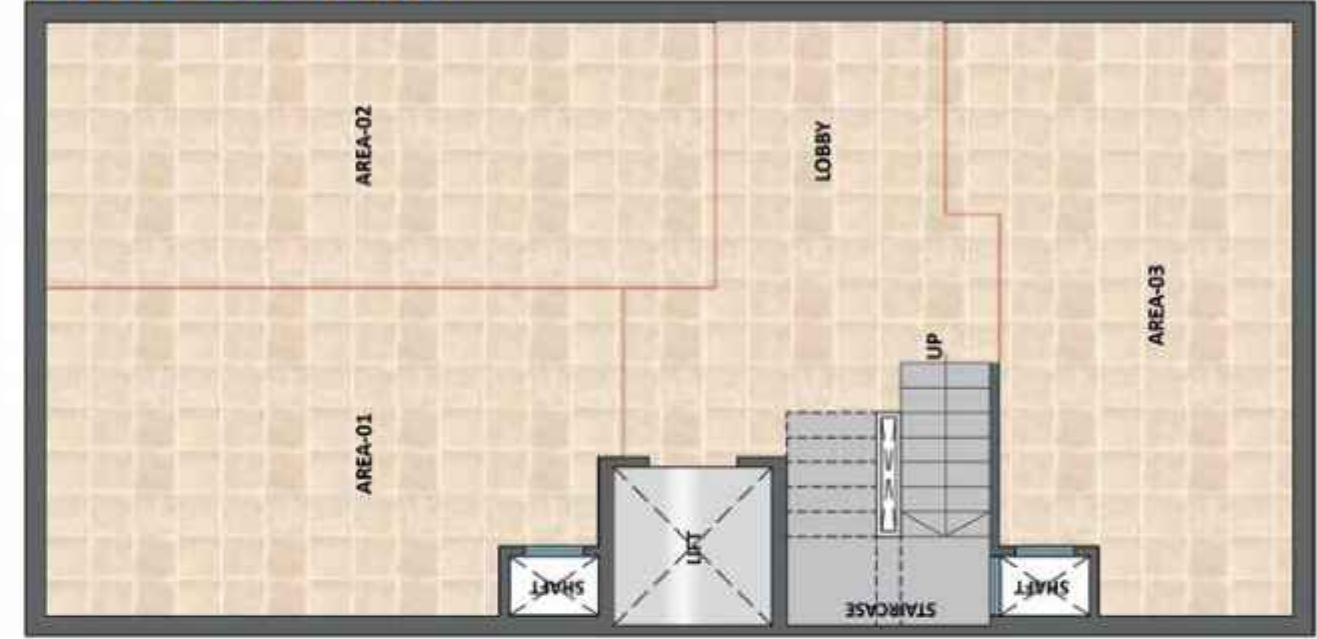


TYPE-B
2BHK + 2 TOILET

STILT FLOOR PLAN



BASEMENT PLAN



TERRACE PLAN



UNIT PLAN



SPECIFICATIONS

DRAWING / DINING ROOM



FLOOR
VITRIFIED TILES



CEILING
OIL BOUND DISTEMPER



WALL
ACRYLIC EMULSION

BALCONIES



FLOOR
ANTI-SKID / MATT
FINISH CERAMIC TILES



RAILING
GLASS RAILING

DOORS & WINDOWS



MAIN / INTERNAL DOOR FRAME
HARD WOOD / RED MERANTI



INTERNAL DOOR SHUTTERS
BOTH SIDE LAMINATED DOORS



EXTERNAL DOORS & WINDOWS
UPVC/ALUMINIUM POWDER COATED

ELECTRICAL



WIRING
COPPER ELECTRICAL WIRING
THROUGHOUT IN CONCEALED
CONDUIT FOR LIGHT POINTS



SWITCHES / SOCKET
ISI MARKED SWITCHES
& SOCKETS

BEDROOM



FLOOR
VITRIFIED TILES



CEILING
OIL BOUND DISTEMPER



WALL
ACRYLIC EMULSION

TERRACE

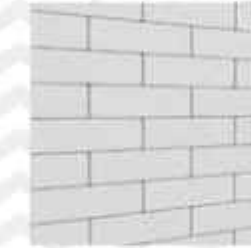


BRICKBAT COBA OR
WATER PROOFING TREATMENT

EXTERNAL DEVELOPMENT



INTERNAL ROADS
INTERLOCKING BLOCKS/
TREMIX CONCRETE ROAD



BOUNDARY WALL
RCC / BRICK WALL
WITH PLASTER &
EXTERNAL WEATHER
PROOF PAINT FINISH



EXTERNAL PAINT
WEATHER PROOF TEXTURE
PAINT IN BUILDINGS

STRUCTURE



EARTHQUAKE RESISTANT
RCC FRAMED STRUCTURE
AS PER SEISMIC ZONE

KITCHEN



FLOOR
VITRIFIED /
CERAMIC TILES



WALL / CEILING
OIL BOUND DISTEMPER



DADO
CERAMIC TILES 600 MM
ABOVE THE COUNTER



COUNTER TOP
GRANITE STONE



FITTINGS & FIXTURES
ISI MARKED CP FITTINGS
& SS SINK

TOILET & BATH



FLOOR
ANTI-SKID
CERAMIC TILES



WALL
CERAMIC TILES TILL
4 FEET / 7'-0" FEET



CEILING
GRID FALSE CEILING



FITTINGS & FIXTURES ISI MARKED
CP FITTINGS, WC & WASHBASIN

BEST BRANDS FOR THE BEST EXPERIENCE

| | | | | | |
|---|-----------------------------|---|---|------------------------------|-------------------------------------|
| TILES | PAINTS | DOOR LOCKS & HANDLES | GLASS UPVC DOORS & WINDOW PROFILES | LIFTS | PLUMBING PIPES |
| SWITCHES | WOODEN DOORS | WIRES & CABLES | CP BATH FITTINGS | | LIGHTING |
| NORTH-WEST SANITARY FITTINGS | KITCHEN SINK | | | | |

Note : Flooring in mix design of marble, granite and tile. Accordingly, variations in shade and/ or size and/ or colour and/ or design of the tiles, motifs, mica etc. may occur.

All products, names, logos, brands, trademarks are properties of their respective owners. Product of other companies may also be used. However, priority will be given to the aforesaid brands/companies.

ABOUT SIGNATURE GLOBAL

Signature Global believe in the policy of transparency. Though we've created our own distinct identity in the field of real estate, we're working more passionately to maintain and improve our reach in the sector. We emphasize on the core values of reliability, responsibility and global standards with regard to the International Real Estate realm.

The group has outlined its vision for 'India of Tomorrow' with a mission of 'Har Parivar ek Ghar' [A home for every family]. With a vision to redefine the current conventions of Indian real estate development by championing excellence in craftsman, planning and service, the company has successfully launched 25 housing projects, all in the prime locations including Gurugram, Sohna and Karnal in Haryana and a commercial mall focussing on the interest of customers in Vaishali, Ghaziabad, Uttar Pradesh. The company has successfully delivered Solera, Synera, Andour Heights, Grand IVA and Orchard Avenue in Gurugram and offered possession of Sunrise in Karnal, months before the expected time of delivery. Each residential project is complimented with one branded retail hub christened as Signum. The hallmarks of these

projects are ideal location, impeccable quality of construction with excellent amenities at reasonable prices. They are unique in terms of planning, design, quality, workmanship, transparency, customer delight and service. We have ushered in best global practices of transparency and professionalism, with 'think global, act local' approach, doing product development as per the needs of our valued consumers.

We are offering Green Homes which are IGBC and Edge Certified that provides a solution to capitalize on the value of green buildings by promoting benefits to customers while protecting environment. We are deploying cutting edge technology and best project management techniques to achieve scale and efficiency to boost affordability.

Signature Global works with a team of experienced architects, master planners and designers who are among the best in the industry. We had partnered with several leading National and International institutions like IFC - an arm of world bank, HDFC CAPITAL, ICICI Prudential etc and takes pride in growing its reach to customers by seeking direct online applications. Leading a team of

highly enthusiastic professionals is always an enjoyable task. The same becomes even more interesting when the society starts recognizing and rewarding your efforts. In the last couple of years, we have won several awards from prestigious media houses for our outstanding contribution to the real estate. We were awarded as 'Haryana's Icons' and 'Emerging Developer' by Times of India, 'Business Leaders in Affordable Housing' by ASSOCHAM, 'Best Upcoming Developer of the Year' by Realty Sutra, 'World Best Realty Brand Award' by Realty Fact and 'Game Changer of India Realty' and 'Best Developer of the Year' awards by Indian Realty Award, 'Best LIG Housing project for Solera' by PMAY Empowering India 2019, 'Six Star CARE Rating for Solera', ICRA the rating agency has added new feathers by adjudging Synera as seven star rating project. Recently, we have been awarded as 'Affordable Housing Project of the Year for Solera', 'Electronic Media Campaign of the Year' and 'Sustainable Business Leader of the Year' by Realty Plus. We have also got ISO 9001:2015; 14001:2015; 45001:2018 Certification.

PROJECTS LAUNCHED

RESIDENTIAL 25

COMMERCIAL 24

MAKING REALTY A REALITY WITH RELIABILITY AND RESPONSIBILITY



PROJECTS DELIVERED

RESIDENTIAL 6

COMMERCIAL 6

