

Inspired By Persian Architecture,
Luxury Meets Contemporary Living.



ARIHANT CLAN
AALISHAN

PHASE - I
A GRAND LIFE
KHARGHAR ANNEXE

MahaRERA REGISTRATION NO. Phase I - P52000006391 | Phase II - P52000017271
<https://maharera.mahaonline.gov.in>

A Lifestyle Project

LIFESTYLE IS NOT A WORD;
IT'S A SPACE WHERE SUPREMACY STAYS.
AN ADDRESS OF THE NEXT.
THE REFLECTION OF THE BEST.

PRESENTING
THE
Rising Star
OF Supremacy

Integrity
The Core Promise
of Dependability and
Professional Conduct

Experience
Unique Themed Lifestyles

Trust
The Credibility of a
Progressive Listed Public Company

Quality
Use of the New-age
Construction Techniques such as MIVAN

Luxury
Premium Finishes that are
truly One-of-its-kind

Transparency
Highest Customer Satisfaction
throughout the process

Pride
Ownership of an Address
Reserved only for Select Few

Lifestyle
Extraordinary Lifestyle Features
for Extraordinary Experiences





AN INSPIRING WORLD DESIGNED
TO GLORIFY YOUR TASTE.

A Lifestyle Project

Where grandeur opens the door to royalty, where significance raises the expectations. Where the world's iconic becomes your every day world.

Welcome to A Lifestyle Project that is comparable to none.

A Lifestyle Project



ARIHANT CLAN
AALISHAN

PHASE - I
A GRAND LIFE
KHARGHAR ANNEXE



**WELCOME TO AN ADDRESS
INSPIRED BY PERSIAN ARCHITECTURE**

soon to become the tallest towers in Navi Mumbai.

Persian-style architecture instantly invokes an image of royalty, luxury and nobility. Most of us dream to live an ultramodern lifestyle replete with luxuries, but only a few actually own it. Persian-style living at 'Arihant Clan Aalishan' is symbolic to the art of unparalleled luxury at the heart of royalty. Situated near Kharghar Valley Golf Course, Proposed Navi Mumbai Corporate Park & Central Park, The Project features a host of regal indulgences inspired by the glorious Persian nobility.

WELCOME TO A GRAND LIFE. THE AALISHAN LIFE.





Aria's Inspiration

✿ *A Lifestyle Project*

AIMING TO TOUCH NEW HEIGHTS
AMIDST THE HIGH RISE STRUCTURES OF NAVI MUMBAI.

THE BEST OF
HISTORICAL ROYALTY
& CONTEMPORARY LUXURY

comes together for a grand life.

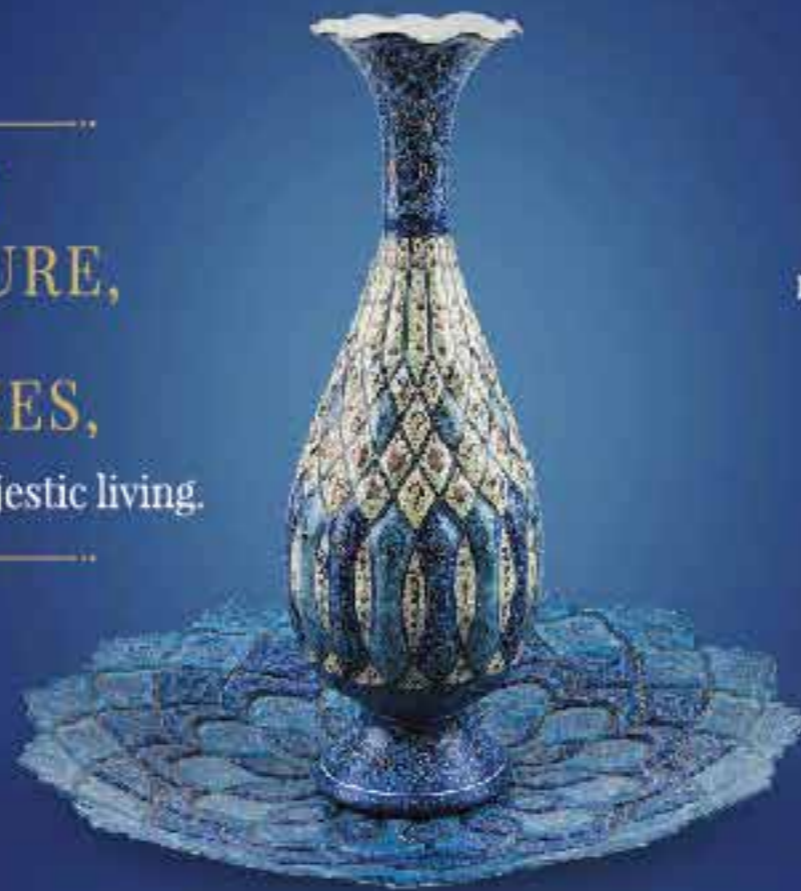
ARIHANT CLAN
AALISHAN

PHASE - I
A GRAND LIFE
KHARGHAR ANNEXE



PERSIAN
ARCHITECTURE,
REGAL
INDULGENCES,

and a life that recreates majestic living.



PROJECT HALLMARKS

BIG SIZED STUDIO, 1, 2, 3 & 4 BHK RESIDENCES

BARAZ 1 & 2 AND ZEENAT - 3 TOWERS OF 53 STOREYS | KAVEH - 37 STOREY TOWER

DOUBLE-HEIGHT ENTRANCE LOBBY INSPIRED BY PERSIAN ARCHITECTURE

PROPOSED SUPERMARKET WITHIN THE PREMISES



DISCOVER
A HOST OF ROYAL
INDULGENCES

inspired by the glorious persian nobility.

 *A Lifestyle Project*



AAYAT
ENTRANCE
LOBBY



KOLUP
GRAND
CLUBHOUSE



HAMMAM SPA
SPA WITH JACUZZI,
STEAM AND SAUNA



SUFIYANA
LOUNGE & CAFE
IN CLUBHOUSE



JAZLAAN
MINI
THEATRE



PAIRI DAEZA
LANDSCAPED GARDEN
& SIT-OUTS

A GRAND ADDRESS
TAKING SHAPE AMIDST
NAVI MUMBAI'S
GRAND LANDMARKS.



LOCATION ADVANTAGES

- UPCOMING NAVI MUMBAI INTERNATIONAL AIRPORT - 15 Mins.
- PROPOSED NAVI MUMBAI CORPORATE PARK - 5 Mins.
- KHARGHAR VALLEY GOLF COURSE - 7 Mins.
- UPCOMING SECTOR 35 METRO STATION - 2 Mins.
- VERY NEAR TO CENTRAL PARK - 6 Mins.

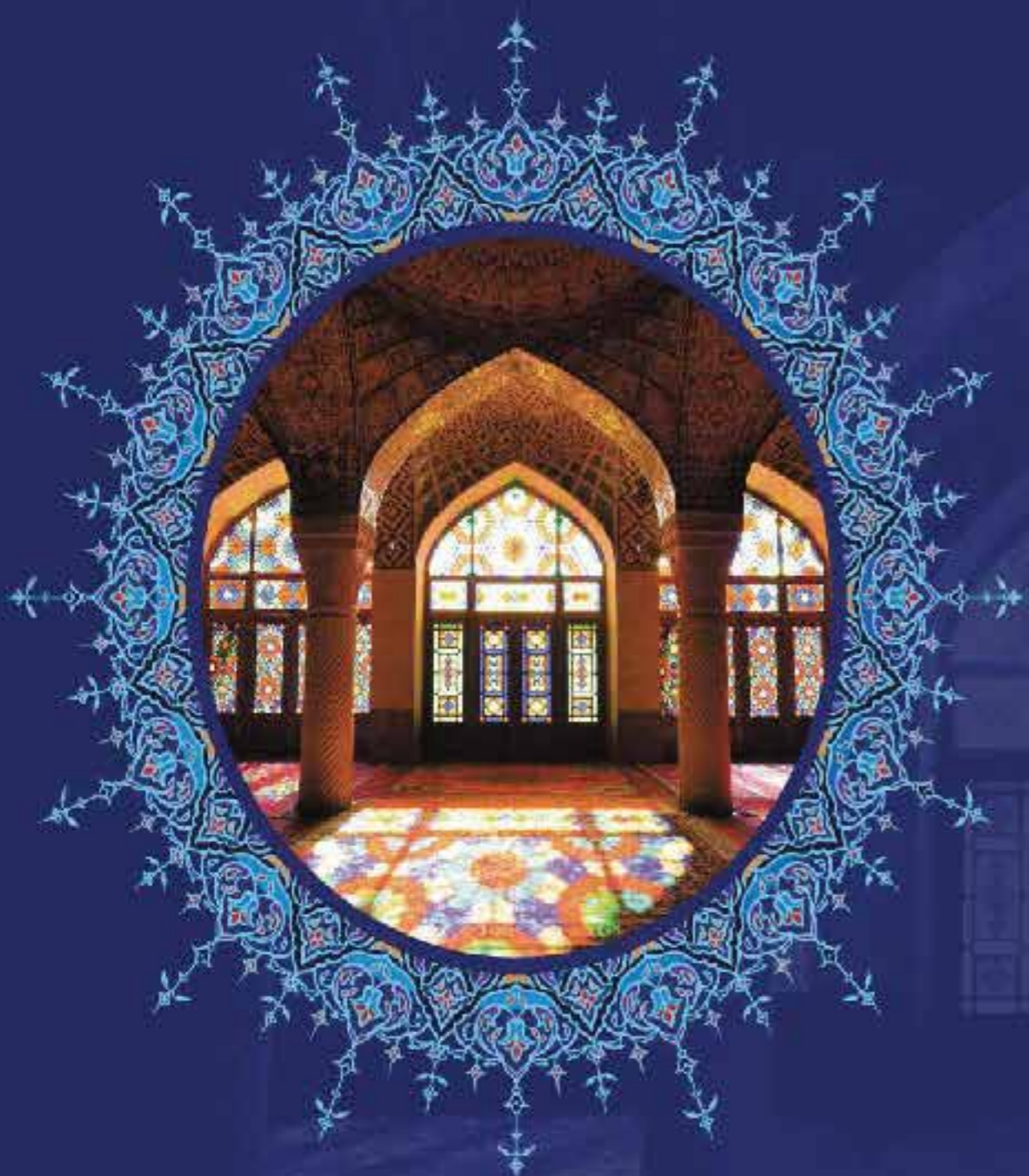




 *A Lifestyle Project*

 A PRIME LOCATION
AMIDST THE
MARVEL OF NATURE.





LIFE IS A JOURNEY
TOWARDS HAPPINESS.
LET'S ENJOY
EVERY MOMENT.

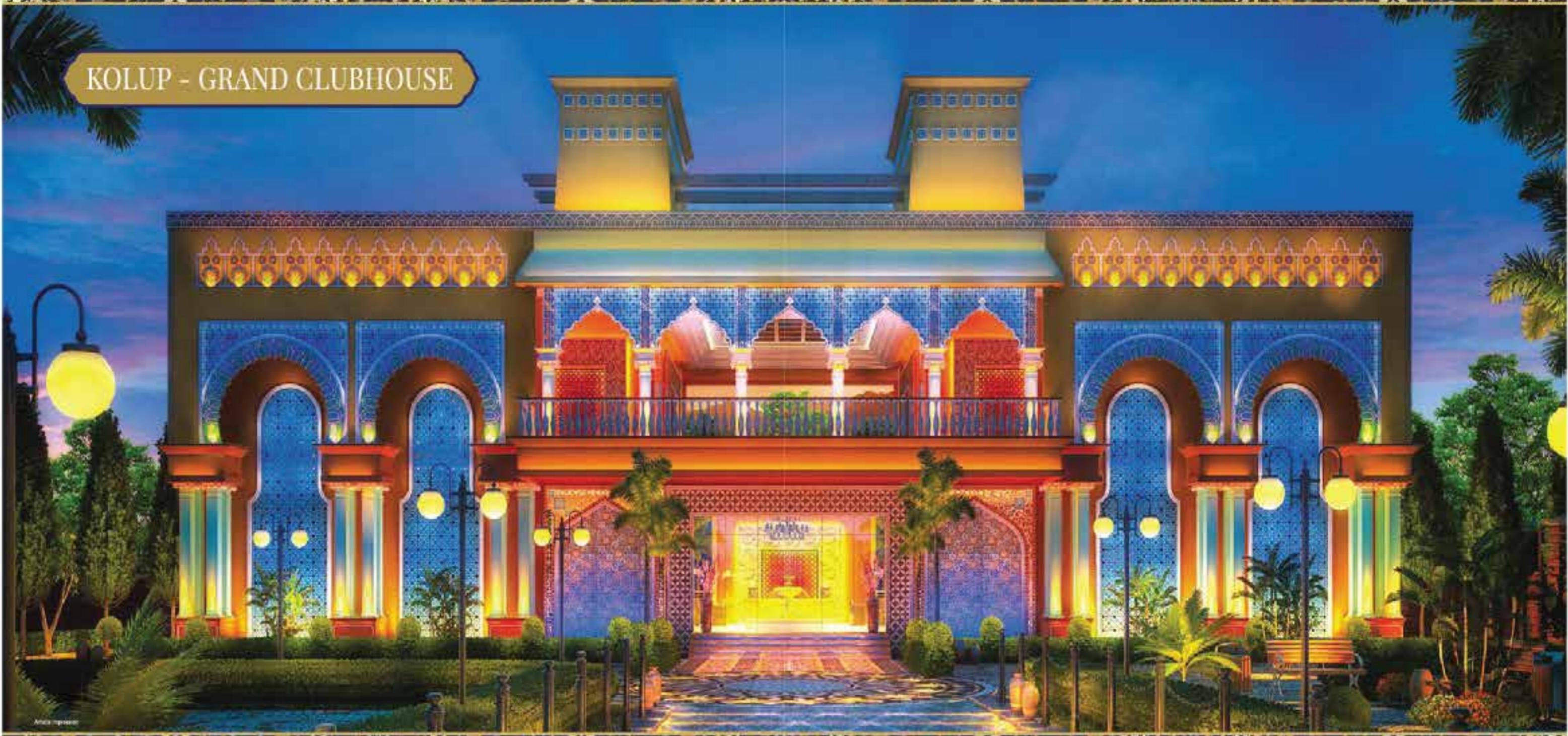
CLUB LIFE EXPERIENCES
WITH INDULGENCES APLENTY

 *A Lifestyle Project*

AAAYAT - ENTRANCE LOBBY



KOLUP - GRAND CLUBHOUSE



HAMMAM - SPA



INHALE THE HAPPINESS,
EXHALE THE STRESS AND
LET THE REJUVENATION BEGIN.



RECREATION AND
REJUVENATION FEATURES

SPA WITH JACUZZI,
STEAM AND SAUNA

SUFIYANA - LOUNGE & CAFÉ



JAZLAAN - MINI THEATRE



WHERE THE SILVER
SCREEN COMES CLOSER
TO YOUR APPLAUSE.



ENTERTAINMENT & SOCIALISING CENTRE

An aerial photograph of a residential complex named 'PAIRI DAEZA'. The complex features several multi-story apartment buildings with balconies. In the center, there is a large, landscaped garden area with a swimming pool, a playground, and various trees and plants. The garden is surrounded by the apartment buildings. The overall scene is well-maintained and modern.

PAIRI DAEZA - LANDSCAPED GARDENS



EXPERIENCE NATURE,
STAY CLOSE TO LIFE,
AND INTRODUCE
YOURSELF TO THE NEW YOU.



EXPERIENCE
AN AZURE WORLD OF
REGAL PROPORTIONS.



FULL-SIZE SWIMMING POOL



BECAUSE
A FITTER YOU IS
A BETTER YOU.



HI-TECH GYMNASIUM



Stock Image



WHEN IT'S TIME
TO BE ONE WITH YOUR
INNER SELF.



YOGA AND MEDITATION
CENTRE





IF YOU ARE GAME?
THEN WE GOT IT ALL.



MULTIPURPOSE PLAY COURTS FOR
BADMINTON & SQUASH

INDOOR SPORTS CLUB FOR CHESS,
BILLIARDS & CARDS

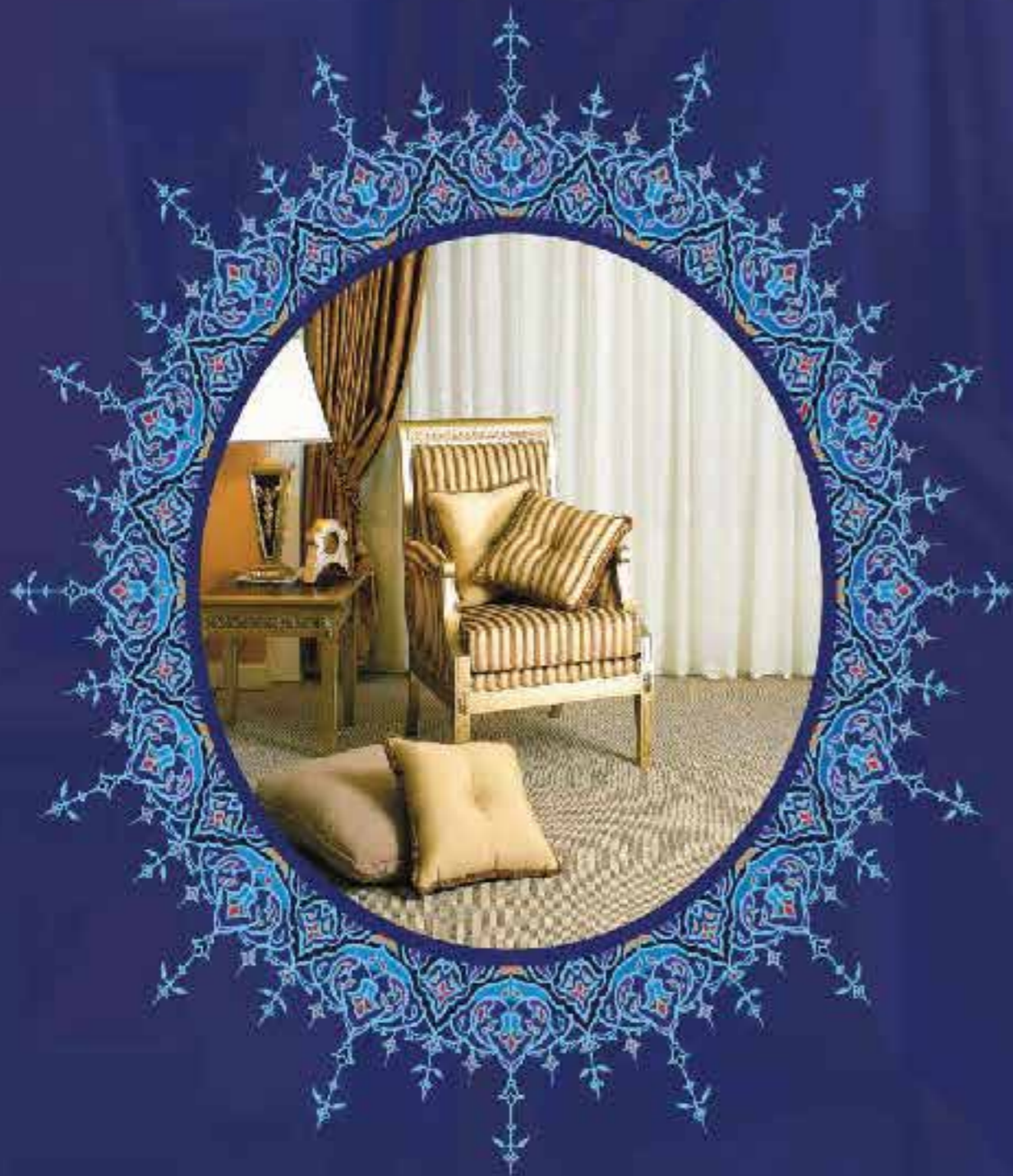


EACH DAY BRINGS
MANY SURPRISES.
HERE WE MAKE THEM
AWE-INSPIRING.



RAIN DANCE ARENA
WITH WATER FOUNTAIN





EXPERIENCE
THE GRANDNESS OF
PERSIAN LIFESTYLE WITH
MODERN AMENITIES.

LUXURIOUS APARTMENT
& TOWER FEATURES

 *A Lifestyle Project*



A GRAND LIFE OF
ROYAL EXPERIENCES AND
ULTRAMODERN LUXURIES
WELCOME YOU.



LUXURIOUS APARTMENT FEATURES

VITRIFIED TILE FLOORING IN ALL ROOMS (800 MM X 800 MM)

MODERN KITCHEN WITH WATER PURIFIER,
GAS ROB & CHIMNEY

GRANITE TOP KITCHEN PLATFORM WITH
DOUBLE BOWL SINK

SERVICE PLATFORM WITH
FULL HEIGHT TILES UP TO BEAM LEVEL

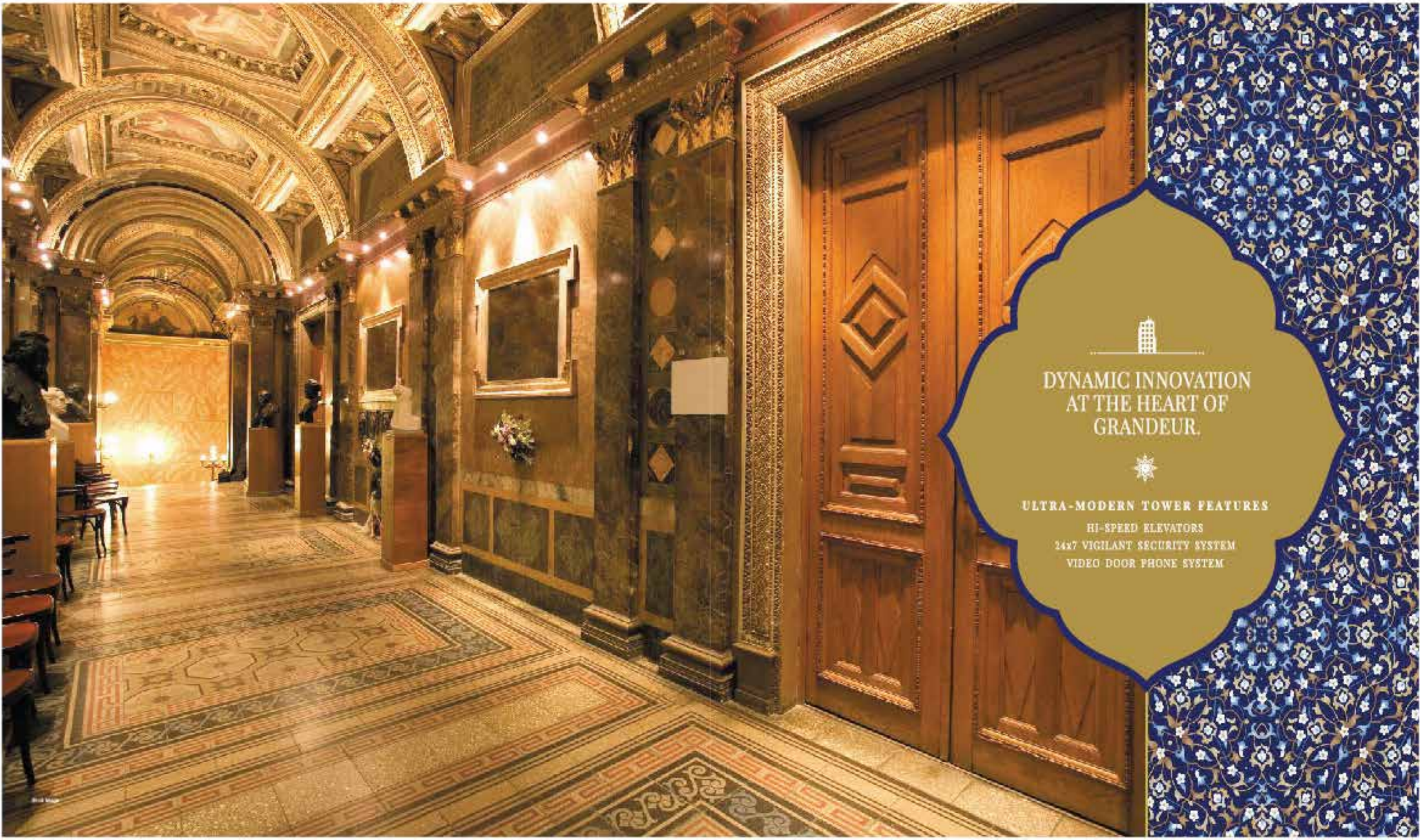


ACTUAL PHOTOGRAPH

AN EXPERIENCE
THAT REDEFINES
THE ART OF ELEGANCE.

LUXURIOUS APARTMENT FEATURES

- BATHROOM WITH BATHTUB, BASIN COUNTER, GLASS PARTITION,
PREMIUM QUALITY CP FITTINGS AND BRANDED SANITARYWARE
- MOULDED PANEL MAIN DOOR AND BATHROOM DOOR &
FRP DOORS FOR BATHROOMS
- UPVC SOUND RESISTANCE
FRENCH WINDOWS
- LUSTRE/VELVET TOUCH PAINT
WITH POP ON ALL WALLS



DYNAMIC INNOVATION
AT THE HEART OF
GRANDEUR.



ULTRA-MODERN TOWER FEATURES

- HI-SPEED ELEVATORS
- 24x7 VIGILANT SECURITY SYSTEM
- VIDEO DOOR PHONE SYSTEM



STATE-OF-THE-ART
AMENITIES THAT TOWER
BEYOND THE BEST.



- 5-LEVEL CAR PARKING
- INNOVATIVE FIRE ESCAPE CHUTE FOR
SELF-EVACUATION
- BUS DUCT



A Lifestyle Project

ARIHANT CLAN AALISHAN

AT A GLANCE



PROJECT HALLMARKS

- BIG-SIZE STUDIO, 1, 2, 3 & 4 BHK RESIDENCES
- BARAZ 1 & 2 AND ZEENAT - 3 TOWERS OF 53 STOREYS
KAVEH - 37 STOREY TOWER
- AAYAT - ENTRANCE LOBBY INSPIRED BY
PERSIAN ARCHITECTURE
- KOLUP - CLUB INDULGENCES

LOCATION ADVANTAGES

- LOCATED AMIDST THE GREEN AND SERENE ENVIRONS
- CLOSE TO UPCOMING NAVI MUMBAI CORPORATE PARK
- NEAR KHARGHAR VALLEY GOLF COURSE
- SECTOR 35, METRO STATION - 0.5 KM.
- VERY NEAR TO CENTRAL PARK
- FAMOUS LANDMARKS LIKE 'UTSAV CHOWK' AND
'SHILP CHOWK' NEARBY
- REPUTED EDUCATIONAL INSTITUTES IN CLOSE PROXIMITY
- CONNECTED WITH MUMBAI-PUNE HIGHWAY
- MARKET AREAS AND OTHER CONVENIENCES LIKE MALLS,
MULTIPLEXES, KHARGHAR RAILWAY STATION ETC.
A SHORT DISTANCE AWAY

STATE-OF-THE-ART CLUBHOUSE

RECREATION AND REJUVENATION FEATURES

- SUFIYANA - LOUNGE & CAFE
WITHIN CLUBHOUSE
- HAMMAM - SPA WITH JACUZZI,
STEAM AND SAUNA
- SWIMMING POOL
- YOGA AND MEDITATION CENTRE
- AEROBICS CENTRE
- HI-TECH GYMNASIUM

INDOOR SPORTS ARENA

- INDOOR SPORTS CLUB WITH CHESS,
BILLIARDS & CARDS ROOM
- BADMINTON & SQUASH COURT

ENTERTAINMENT & KNOWLEDGE CENTRE

- JAZLAAN - MINI THEATRE
- LIBRARY WITH VARIED COLLECTION
OF BOOKS
- BUSINESS LOUNGE

DESIGNER LANDSCAPES INSPIRED BY PERSIAN LANDSCAPING

PLAY AREA & ENTERTAINMENT CENTRE

- CHILDREN'S OUTDOOR PLAY AREA
- RAIN DANCE ARENA WITH WATER
FOUNTAIN

SERENE LANDSCAPES

- PAIRI DAEZA - GARDEN WITH
SIT-OUTS
- HERBAL BOULEVARD
- LANDSCAPED PARTY AREA

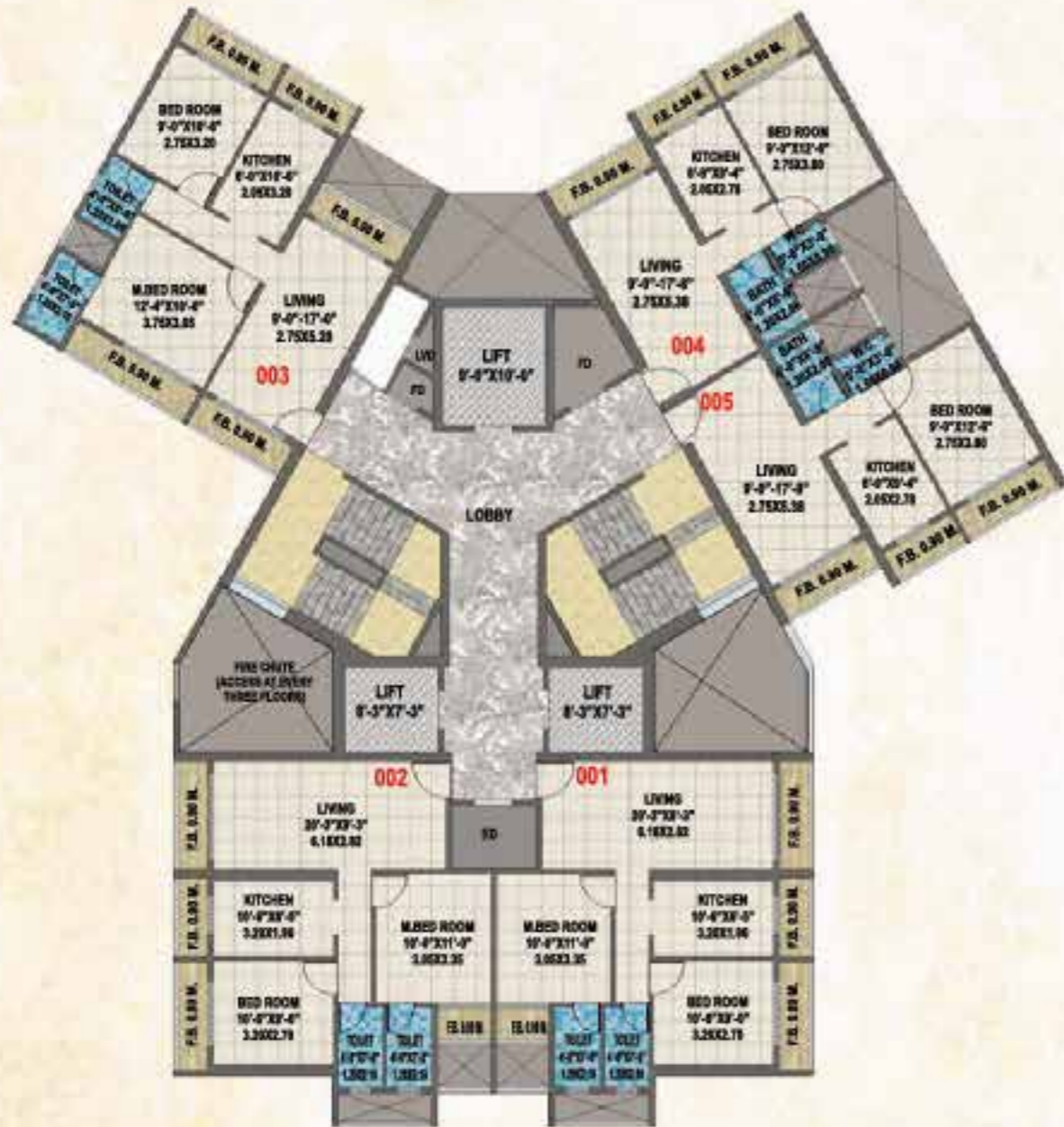
LUXURIOUS APARTMENT FEATURES

- VITRIFIED TILE FLOORING IN ALL ROOMS
(800 MM x 400 MM)
- MODERN KITCHEN WITH WATER PURIFIER, GAS HOB
& CHIMNEY
- GRANITE TOP KITCHEN PLATFORM WITH DOUBLE
BOWL SINK
- SERVICE PLATFORM WITH FULL HEIGHT TILES UP TO
BEAM LEVEL
- BATHROOM WITH BATHTUB, BASIN COUNTER,
GLASS PARTITION
- PREMIUM QUALITY CP FITTINGS AND BRANDED
SANITARY WARE
- MOULDED PANEL MAIN DOOR AND BATHROOM DOOR
- FRP DOORS FOR BATHROOMS
- UPVC SOUND RESISTANCE FRENCH WINDOWS
- LUSTRE/VELVET TOUCH PAINT WITH POP ON
ALL WALLS

ULTRAMODERN TOWER FEATURES & UTILITIES

- HI-SPEED ELEVATORS
- 24X7 VIGILANT SECURITY SYSTEM
- VIDEO DOOR PHONE SYSTEM
- 5-LEVEL CAR PARKING
- INNOVATIVE FIRE ESCAPE CHUTE FOR
SELF-EVACUATION
- BUS DUCT FOR ELECTRICITY SUPPLY

TYPICAL FLOOR PLAN - KAVEH



BARAZ - BIG-SIZE STUDIO



BARAZ - 2 BHK



BARAZ - 3 BHK



KAVEH - 1 BHK



KAVEH - 2 BHK TYPE 1



KAVEH - 2 BHK TYPE 2



ZEENAT - 4 BHK



 *A Lifestyle Project*

A Project by

ARIHANT
SUPERSTRUCTURES LTD.
CONTINUING STABILITY

CLAN
+you