



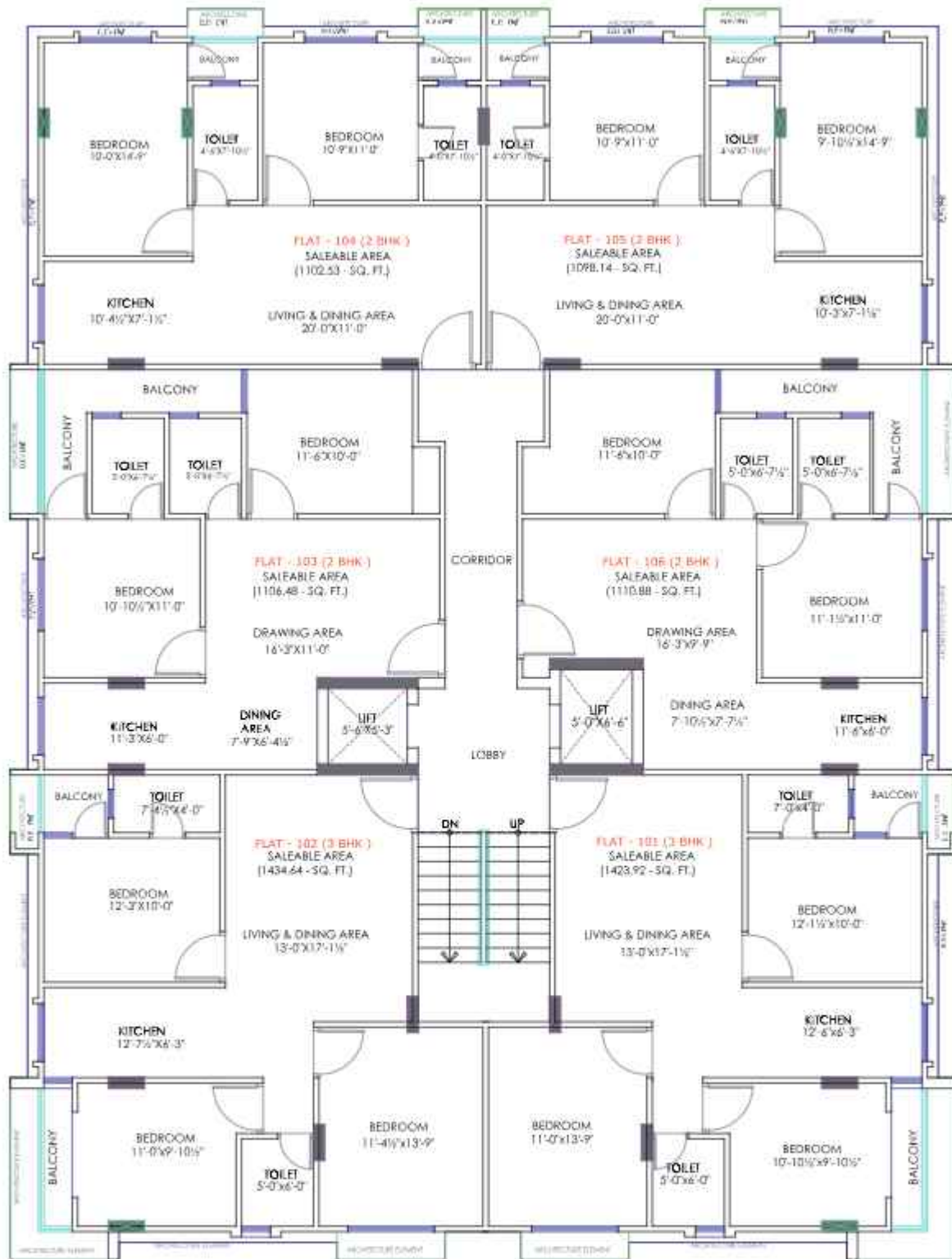
VINAYAK WESTWAY

Where Comfort Meets Elegance



Premium
2&3 BHK Apartments

Typical Floor Plan (Ground To 5th)



FLAT NO.	101	102	103	104	105	106
TYPE OF FLAT	3 BHK	3 BHK	2 BHK	2 BHK	2 BHK	2 BHK
SUPER BUILT-UP AREA (SQ.FT.)	1423.92	1434.64	1106.48	1102.53	1098.14	1110.88

PROJECT SPECIFICATION

- ✦ Rera registered project.
- ✦ JDA Approved.
- ✦ Earthquake resistant structure designed as per seismic zone II.
- ✦ Bricks Framed Structure – As per consultants plan.
- ✦ Temple.
- ✦ Gym.
- ✦ Roof Top Garden.
- ✦ Beautiful landscaping in project.
- ✦ Kids Play Area.
- ✦ Well managed 24 security services along with 24 hrs CCTV Camera.
- ✦ Guard Room.
- ✦ High speed Automatic lift of premium brand.
- ✦ 100% Power Backup for Common Area & lift.
- ✦ Ample Covered Car Parking space along with Visitors parking.
- ✦ Granite flooring on Staircases.
- ✦ SS Railing on Staircases.
- ✦ Fire Fighting System.
- ✦ EV vehicle charging point in parking area.
- ✦ 24HRS Water supply facility with borewell.
- ✦ Provision of Baisapur water supply in tank as per Govt. norms.
- ✦ Underground and Overhead water supply Tank.
- ✦ Branded UPVC slider windows & Gates.
- ✦ Asian Premium Shine Colour on external and Inside of flats.

UNIT SPECIFICATION

- ✦ Modular Kitchen with Chimney. (Hindware)
- ✦ Wooden Wardrobes in all rooms.
- ✦ Flush Doors in all rooms and Main door with 30 MM thickness.
- ✦ False ceiling in all rooms and drawing-dining.
- ✦ Spacious room sizes.
- ✦ Ventilated rooms with spacious balconies.
- ✦ SS Railings with Toughened Glass in Balcony.
- ✦ Branded CP fittings & Sanitary wares. (CERA)
- ✦ PVC of Kisan KSR brand.
- ✦ 2' Dado tiles in Kitchen above the counter.
- ✦ Designer Wall tiles in washrooms on full ceiling height.
- ✦ Granite counter top in Kitchen.
- ✦ SS Sink in Kitchen.
- ✦ Premium ISI modular switches & accessories.
- ✦ Fan & Ceiling lights in all rooms and drawing-dining area. (Orient)
- ✦ AC copper wiring fittings in all rooms and drawing-dining area.
- ✦ Branded floor tiles.
- ✦ Antiskid tiles on washroom flooring.
- ✦ POP finish in flats.



A lifestyle curated for those who appreciate peace, space, and sophistication.
Step into a world where elegance embraces every corner of your home





Site Address :- New Ajmer Road Bus Stand, Westway Heights, Jaipur

Location Advantage



1 km Geetanjali Medical College



0.5 km Ajmer Road Main Bus Stand



4 km DPS School



3 km Jayshree Periwal High School



4 km Mahindra Sez



3 km Iskcon Temple



4 km Mansarovar Metro Station



15 km Airport



18 km Ajmeri Gate



3 km Shalby Hospital



6 km Mansarovar Main Market



6 km Element Mall



SVH | SHREE VINAYAK HOMES
BUILDERS & DEVELOPER || SINCE 2005

Shree Vinayak Builders :
Plot No- 23, 24 Maa Vaishno Nagar 2nd,
Kaiwar Road, Jaipur (Rajasthan) - 302012

Call :