



Our Expertise. Your Joy.

Transforming Skylines
Across India






Our Expertise. Your Joy.

Today, Known As A Developer
of **Promise & Credibility**





Curated

56+

World Class Marvels

Redefining Meaning Of
Luxury And

World Class Living



Residential Project Portfolio

COMPLETED PROJECTS



UNDER CONSTRUCTION PROJECTS



LUXURY BOUTIQUE FLOORS



NEW LAUNCHES



An aerial photograph of a city at sunset. The sky is filled with soft, golden light and scattered clouds. In the background, a range of mountains is visible under the twilight sky. The city below is densely packed with buildings, with a mix of low-rise residential structures and taller commercial buildings. A prominent circular stadium is visible in the lower-middle section of the frame. The overall atmosphere is one of a bright, successful day ending.

2024

A Year of Highs

A New Peak Of High- Rise Living

M&M
ALTITUDE

M&M
MANSSION



The Pattern Of Consistent Price Hikes





Price Rise In Dwarka Expressway

12 K in 2023 First Quarter → 20K in Oct'24

Average Price Of
Apartments On Expressway



Rs. 4 Cr.





In These Times Of Highs
We Present To You



A woman's profile is shown in silhouette against a warm, golden sunrise background. Her hair is long and dark, flowing down. The overall mood is serene and luxurious. The text is centered over the image.

The Luxury of
Warm Sunrises



A Luxury Framed By
Canopy Of Greens



Experience
A Rare Luxury
Of



Low Rise Living

Why Low-Rise Living Is a Rare Luxury ?

Peaceful
With
Low Noise
Levels

Stronger
Community
Connect

Ample
Natural Light
& Ventilation

Engaging
Outdoor
Spaces

Sustainable
For A Greener
Future

Affordable
Maintenance



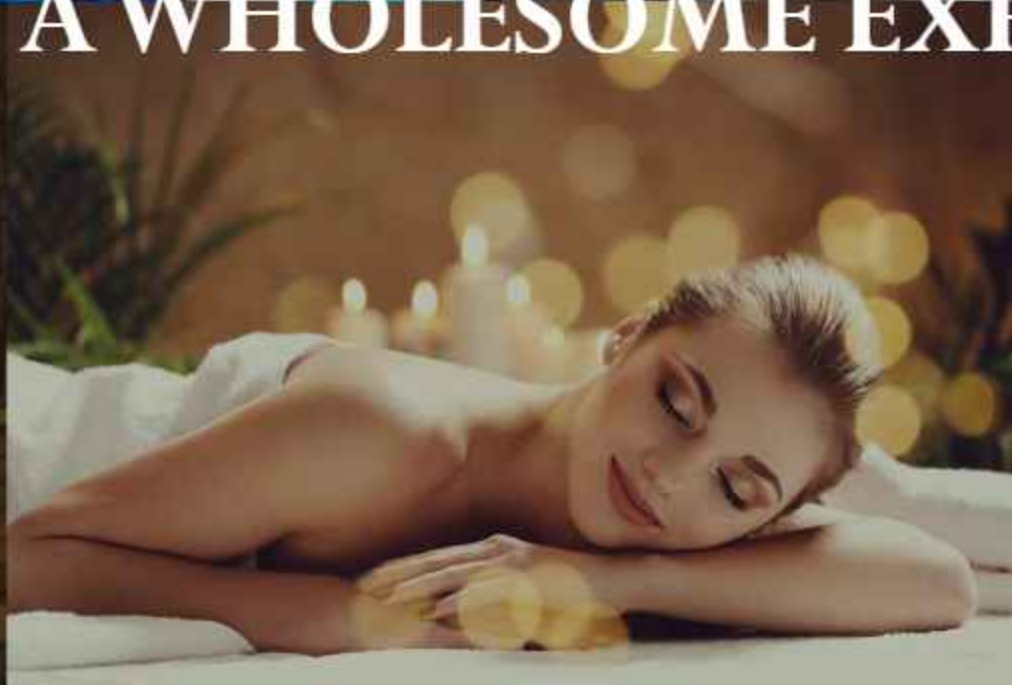
— P R E S E N T I N G —

M3M
Soulitude





**AN ECOSYSTEM DESIGNED FOR
A WHOLESOME EXPERIENCE**



M&M Soulitude

The Journey so far..





Entire Project

**SOLD
OUT**

In Just 15
Days

1,500 UNITS
Claimed
In Record Time!



Key Factors Behind Our Magnificent Success



Located In Close Proximity Of Dwarka Expressway



A Big Exclusive Club



Dual Entry Points



My Sky
Customizable Terrace Space



My Space
Customizable Basement Space

Super Structure Complete And Ready



Video Link - <https://youtu.be/mbk-iD8uNMk?si=L11CuelkhMFgxzOM>

So,
You're
Wondering
What's New?





We've Saved The Best For Last!
The Finest Units Are Now Being
Unveiled!



Curious To Know More About
M3M SOULITUDE ?



Life at the Perfect Location



Strategic Location With Exceptional Connectivity

2 Mins Away

Dwarka
Expressway

5 Mins To

NH -8

10 Mins To

SPR

30 Mins To

IGI Airport

30 Mins To

Cyberhub

25 Mins To

Medanta

Schools in
Vicinity

St Xavier | DPS

A modern, multi-story residential building with a light-colored facade and dark window frames. The building features balconies with glass railings and decorative gold-colored accents on the roof and ground floor. The foreground is landscaped with green grass and a large bed of purple flowers. The sky is blue with light clouds. The text "Embrace The Essence Of Soulful Living" is overlaid on the image in white and gold colors.

Embrace The Essence Of
Soulful Living

The City Club

An Enchanting Ambiance Of
Peace & Tranquility



A modern multi-story apartment building with a mix of grey, white, and wood-grain facades. The building features balconies with glass railings and some with plants. The windows are illuminated from within, and some balconies have recessed lighting. In the foreground, there is a well-maintained garden with a green lawn, flower beds with purple and white flowers, and several wooden benches. People are seen walking and sitting on the benches, suggesting a community-oriented environment. The sky is a clear, deep blue, indicating dusk or dawn.

Green Havens

Refresh your Minds

A modern residential complex with multiple tennis courts in the foreground. The courts are blue and green with white lines. The buildings are multi-story with balconies and large windows. There are trees and a clear blue sky in the background. The text "Spaces to Unleash Your Passion" is overlaid on the image.

Spaces to Unleash Your Passion



Efficiently Designed
Luxury Floors



Unwind with Beautiful
Balcony Views

My Sky

An Exclusive Terrace Space, Yours To Transform

Create A Serene Garden, Vibrant Party Deck, Or Peaceful Meditation Retreat



My Space

A Customizable Basement Area to Create Your Perfect Work-from-Home Station, Music Studio, Gym, and More



A modern, multi-story building with a curved facade and large glass windows, illuminated at night. The building features a mix of light-colored panels and dark wood accents. In the foreground, there is a circular fountain with water spraying upwards, surrounded by a paved walkway and landscaped greenery with small trees and bushes. The sky is dark, suggesting dusk or night. The text 'Enjoy The Finest Contemporary Lifestyle' is overlaid in the center of the image. 'Enjoy The Finest' and 'Contemporary' are in white, while 'Lifestyle' is in a gold color. The text is framed by gold-colored brackets on the left and right sides.

Enjoy The Finest
Contemporary Lifestyle



Enter into a

World of Splendor



WELL-EQUIPPED GYM



FINE DINE RESTAURANT



LIBRARY



SWIMMING POOL



SPA & SAUNA



SALON



PRICE & PAYMENT PLAN

OPTION 1

PRICE

₹12,999 PSF

PAYMENT PLAN

30:70

OPTION 2

DOWN PAYMENT
PLAN

95 : 5

DISCOUNT OF

₹1000 PSF

PRICE

₹11,999 PSF

Home Loan Partners



AXIS BANK



**बैंक ऑफ महाराष्ट्र
Bank of Maharashtra**

भारत सरकार का उद्यम

एक परिवार एक बैंक



**सेन्ट्रल बैंक ऑफ इंडिया
Central Bank of India**

The image features a decorative background with green foliage in the corners and a light brown rectangular box in the center. The text is centered within this box.

Embrace Low-Rise Luxury !