



**DHARTI**

# Skyline

**2 & 3 BHK LIFESTYLE APARTMENTS  
& RETAIL SPACES**



---

GROUP

---

Dharti Group is committed to building aspirations and delivering value. In the last 27 years, we have developed over 20 million Sq. ft. of prime residential real estate; 15+ landmark projects and over 2500 happy families stand testimony to our commitment.

Having established its credentials in the Real estate domain with landmark projects in Chandkheda, Ahemdabad, Dharti Group has taken up this mammoth project "**Dharti Skyline**" in **Jagatpur**, to cater to the accomplished achievers.

---



# Skyline

**2 & 3 BHK LIFESTYLE APARTMENTS  
& RETAIL SPACES**



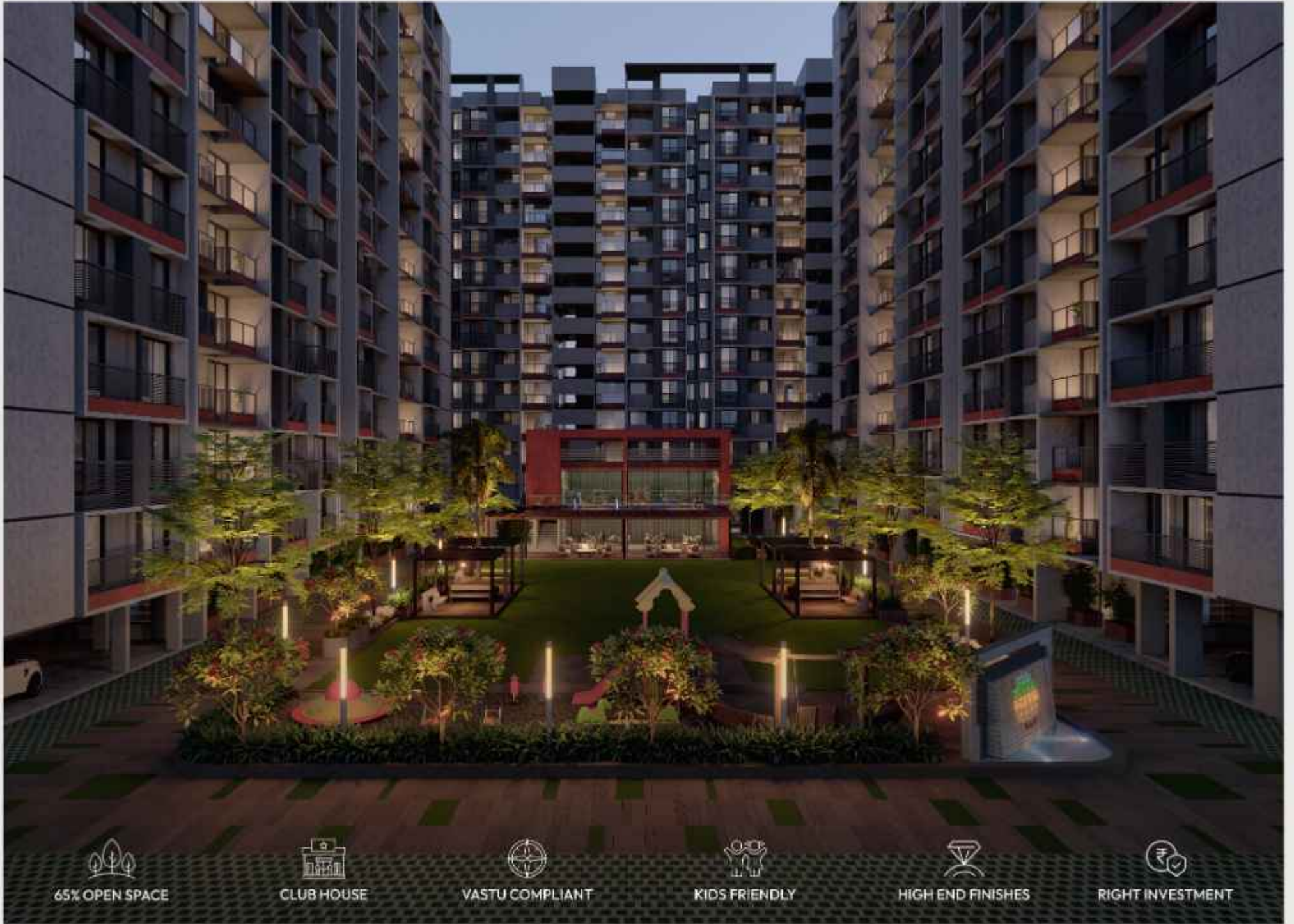


ARRIVE  
HOME  
AND LEAVE  
THE WORLD  
BEHIND

Drive into the established grand entrance designed with a beautiful landscaped surroundings with resort-style environments and clubhouse.

This spacious contemporary apartment receives lots of day light and community views with balconies,





65% OPEN SPACE



CLUB HOUSE



VASTU COMPLIANT



KIDS FRIENDLY



HIGH END FINISHES



RIGHT INVESTMENT



## WHERE LIFESTYLE MEETS LIVING

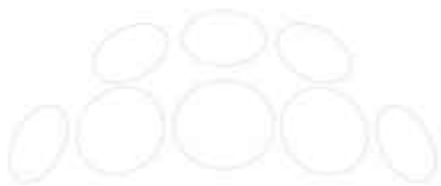
Thoughtfully designed and positioned on site, Dharli Skyline proudly stands tall and representing a timeless and distinctive symbol while offering a truly unique and memorable living experience.





## EXCEEDING EVERY EXPECTATION

Designed with hand-picked facilities and amazing privileges, this project pampers you like nothing else, this is your world of happiness that truly exceeds every expectation.



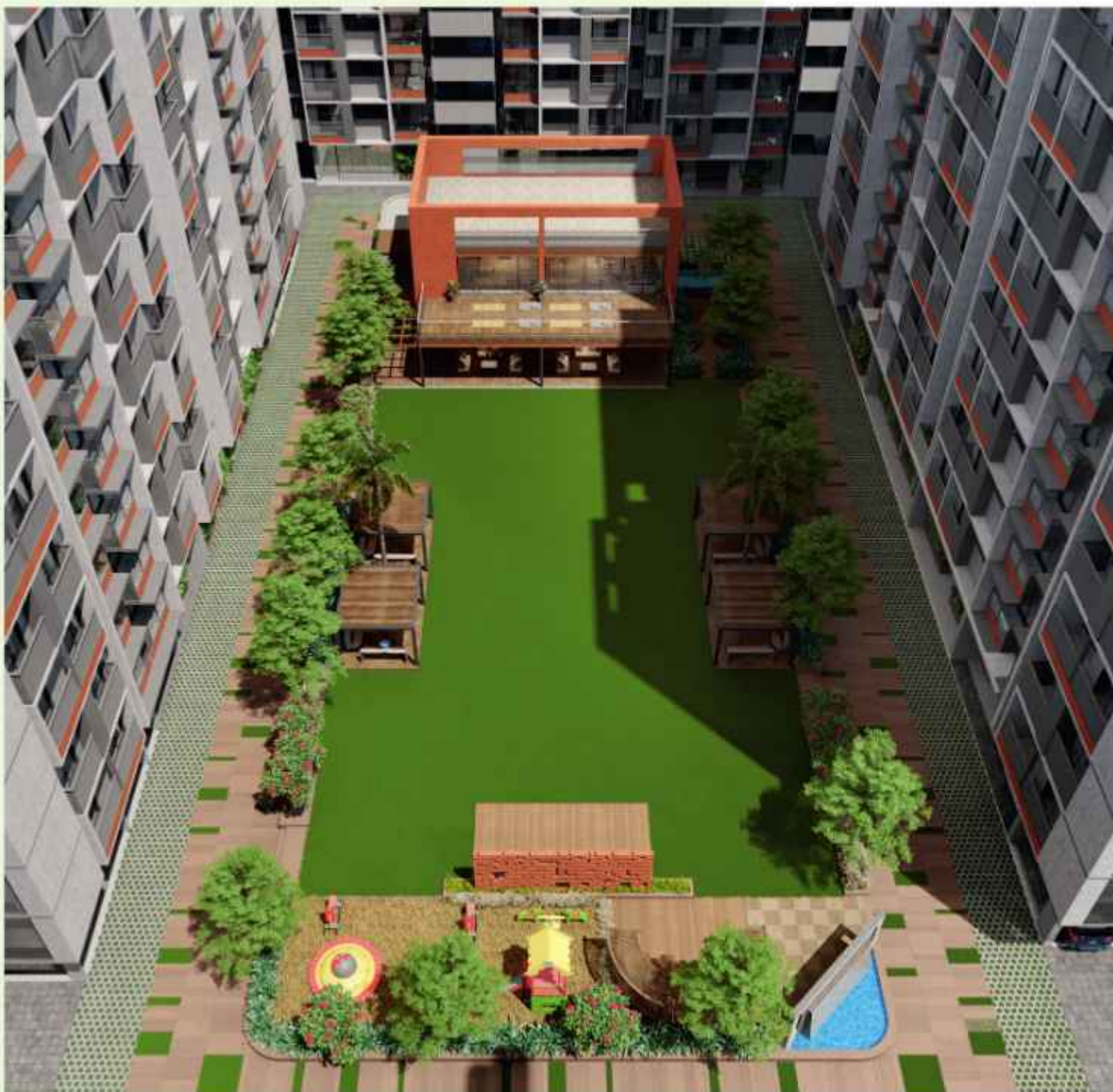
Club House



Jogging & Cycling Track

## MAKE FITNESS YOUR ROUTINE

Stay fit and healthy  
everyday.  
A dedicated walking track  
and landscaped garden  
surrounds the project and  
allows you to take  
Uninterrupted walks  
whenever you like.



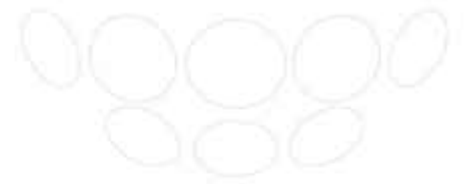
HIGH ON  
OUTDOOR  
SPACES.  
HIGH ON  
HAPPINESS.

Revel in the peacefulness of outdoor seating. The seating spaces are immersed in a lush green environment lined with trees, ornamental & flowering plants, and more. The children's play area is designed with immense care in order to invite young minds to experience pure bliss.





Multi-purpose Game Court



## GET THE GAME GOING

Why limit yourself to one sport  
when you can play many.  
You can enjoy different  
activities and games at this  
smartly planned  
Multipurpose court.







## FOR YOUR ULTIMATE FITNESS GOAL

The well equipped  
in-house the state-of-the-art  
fitness centre drives you  
towards your fitness goals.



 Lavish Lawn Area	 Gymnasium	 Open Gym for Senior Citizens	 Yoga / Meditation Deck	 Senior Citizen Seating	 Women's Seating	 Chit Chat Area with Gazebo	 Open Seating	 Open Toddler Play Area	 Toddler Pool
 Indoor Toddler Area	 Children Play Area	 Day Care Center	 Open Air Theater & Stage	 Home Theater	 Gazebo Seating	 Covered Library	 Open Library	 Decorative Foyer Entry	 Personal Foyer
<b>50+ AMENITIES</b>			 Drop Off Zone	 Water Body	 Jogging Track	 Club House	MULTIPLE AMENITIES, ONE ROOF.		
			 Music System in Garden Area	 Acupressure Walkway	 Cycling Track	 Cycle Stand			
 Box Cricket	 Skating Rink	 Multi Game Court	 Indoor Games	 Banquet Hall	 Open Kitchen & Wash	 Plaza with Tea Table	 Healthy Drink Counter	 Garden Store	 Video Door Security / Intercom
 Allotted Car Parking	 Solar Panel	 Entrance Gate	 Power Backup	 Society Office	 Gas Supply	 Common Electric Car Charging Points	 CCTV Cameras	 DTH Connection	 Security Cabin



**OUTDOOR GYM**  
 The gym is open for you.



**THEATRE**  
 Watch your favourite movies and shows.



**GRAND FOYER ENTRANCE**  
 A place to meet and greet friends.



**BOYS CRICKET**  
 The game is on for you.



**OPEN & COVERED LIBRARY**  
 The library is open for you.



**CYCLE STAND**  
 The place to park your cycle.



**HEALTHY DRINK BAR**  
 The place to refresh yourself.



**SOCIETY OFFICE**  
 The place to manage your community.



**A WAY  
 OF LIFE  
 YOU HAVE  
 NEVER  
 EXPERIENCED**

Get ready for a resort-like  
 ambiance.  
 A luxurious lifestyle with the  
 best-in-class indoor and  
 outdoor amenities  
 awaits your arrival.

Life at Dharti Skyline is one of quality  
 time spent with friends and family.  
 Each and every amenity has been  
 cherry-picked and tastefully crafted to  
 present a premium living experience.



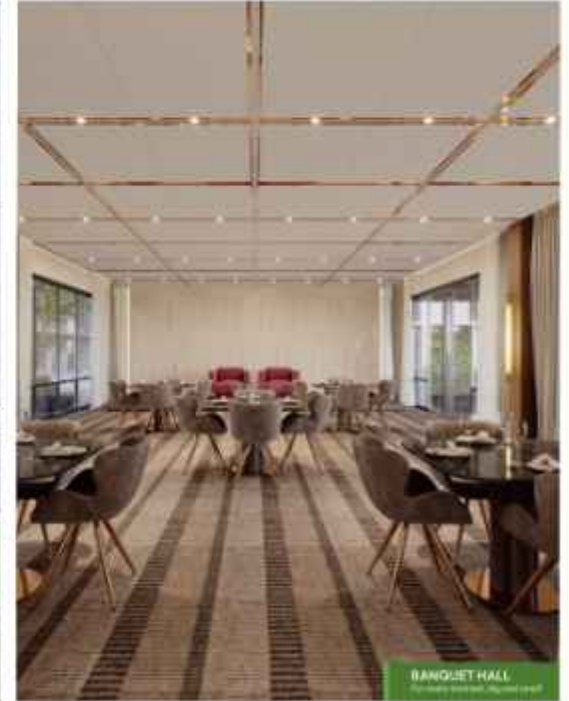
INDOOR GAMES  
Approx. 100 sq. ft. (30 sq. m)



DAY CARE CENTER  
Approx. 100 sq. ft. (30 sq. m)



YOGA / MEDITATION DECK  
Approx. 100 sq. ft. (30 sq. m)



BANQUET HALL  
Approx. 100 sq. ft. (30 sq. m)



24.00 MTR WIDE T.P. ROAD

## GROUND FLOOR PLAN



## LEGENDS

01 SOCIETY ENTRANCE	22 CHITCHAT AREA WITH GAZEBO
02 SECURITY CABIN	23 CHILDREN PLAY AREA
03 COMMERCIAL COMMON TOILET	24 OPEN AIR THEATER / STAGE
04 DROP OFF ZONE	25 LAVISH LAWN AREA
05 FOYER ENTRANCE (A-J BLOCK)	26 SENIOR CITIZEN SEATING
06 PARKING	27 WOMEN SEATING
07 COVERED LIBRARY	28 TODDLER POOL
08 OPEN LIBRARY	29 LAUGHING AREA
09 SOCIETY OFFICE	30 OPEN GYM FOR SENIOR CITIZEN
10 METER ROOM	31 HALL - GROUND FLOOR
11 GARDEN STORE	32 GYM - FIRST FLOOR
12 INDOOR GAMES	33 PLAZA WITH TEA TABLE (JIF)
13 TODDLER AREA	34 YOGA / MEDITATION DECK (FF)
14 CYCLE STAND	35 OPEN KITCHEN / WASH
15 JUICE COUNTER	36 COMMON TOILET
16 HOME THEATER	37 BOX CRICKET
17 DAY CARE CENTER	38 SKATING RINK
18 JOGGING TRACK	39 OPEN AREA
19 CYCLE TRACK	40 MULTIPURPOSE COURT
20 WATER BODY	BARRET BALL, VOLLEYBALL, TENNIS, BADMINTON, FOOTBALL, HOCKEY
21 OPEN TODDLER PLAY AREA	

# FIRST FLOOR PLAN

A TO J BLOCK



24.00 MT W I D E T P. ROAD

# SECOND FLOOR PLAN

A TO J BLOCK



24.00 MT W I D E T P. ROAD

# THIRD FLOOR PLAN

A TO J BLOCK



24.00 MT WIDE TP ROAD

# 3 BHK UNIT PLAN

TYPE 1 - BLOCK : A | B | C | D



# 3 BHK UNIT PLAN

TYPE 2 - BLOCK : A | B | C | D



# 2 BHK UNIT PLAN

TYPE 3 - BLOCK : E



## 2 BHK UNIT PLAN

TYPE 4 • BLOCK : E | F | G | H



## 2 BHK UNIT PLAN

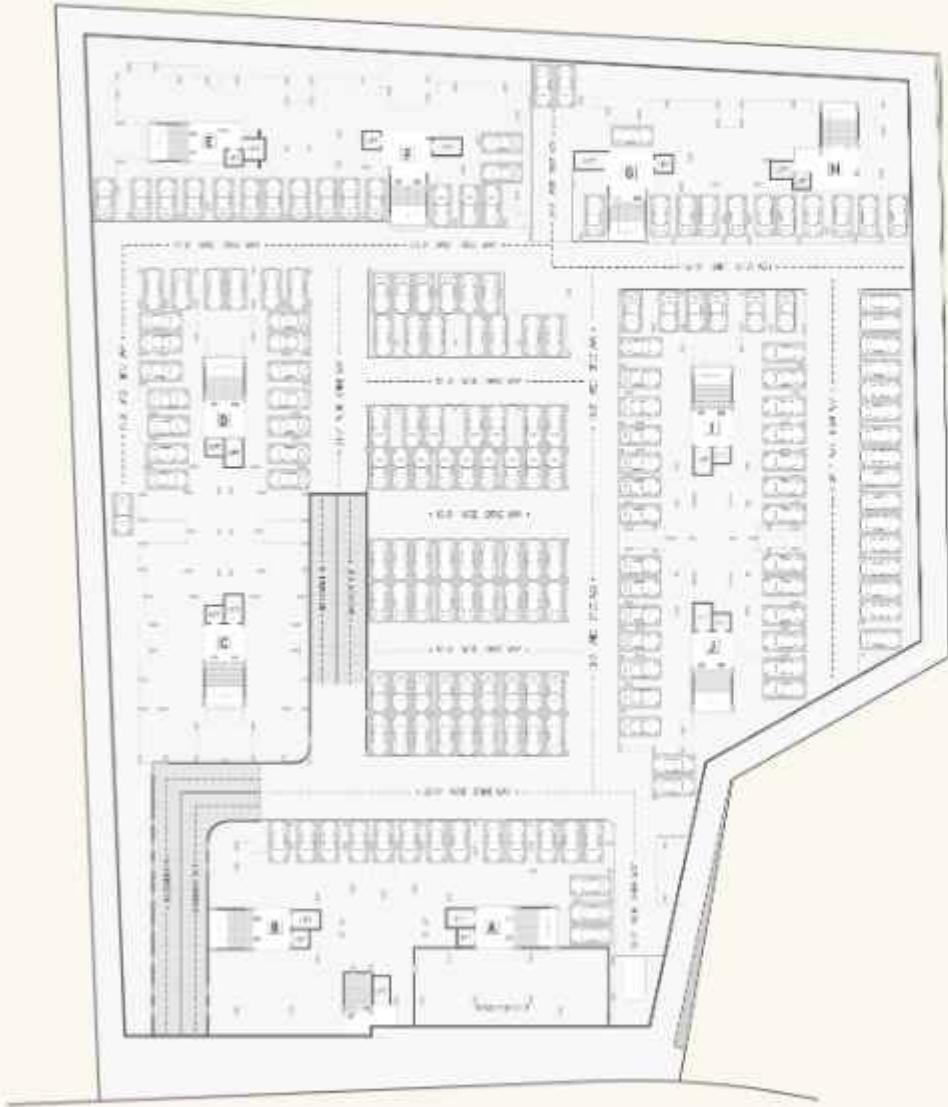
TYPE 5 • BLOCK : H





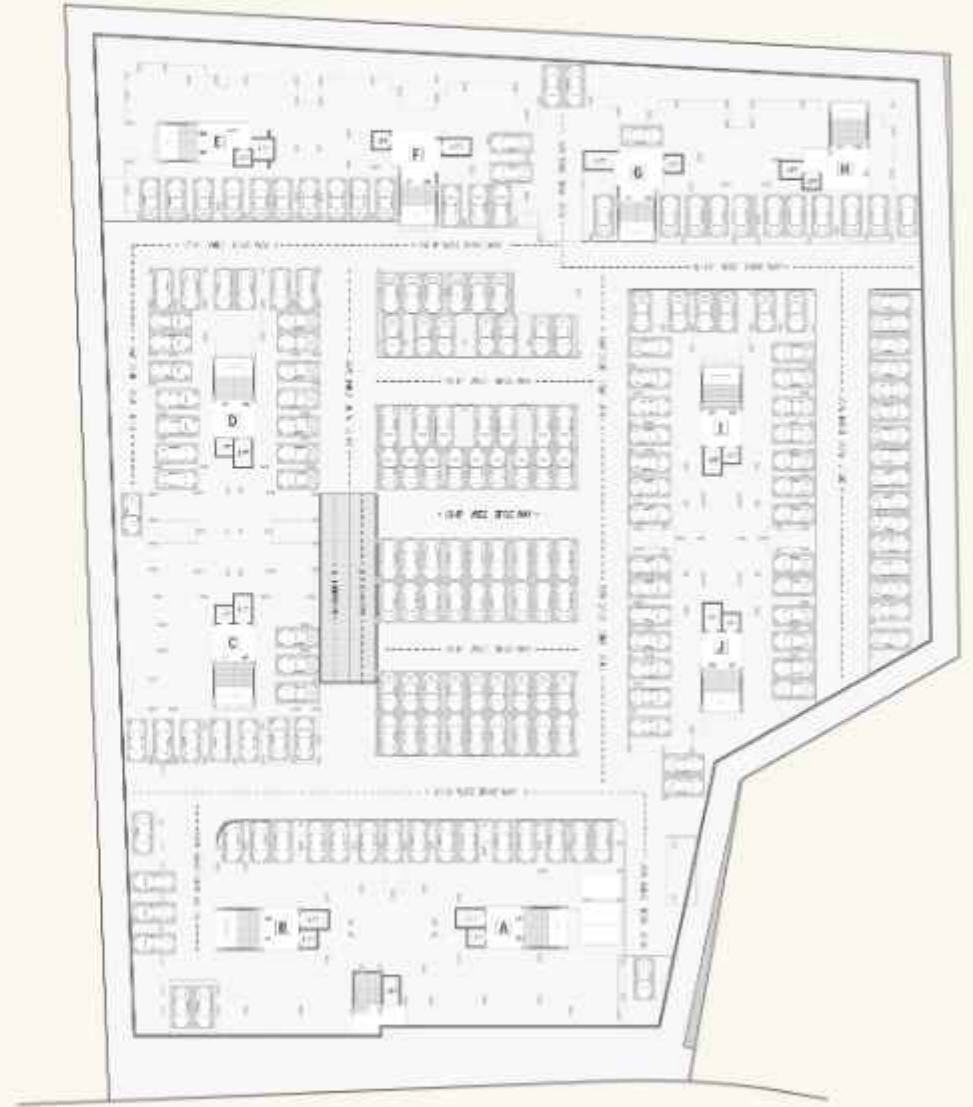
# FIRST BASEMENT

PLAN



# SECOND BASEMENT

PLAN





# THE COZY INTERIORS YOU CALL HOME

Welcome to an unconventional living space that speaks the language of style and elegance and has its very own story to tell. A story that defines our passion for great craftsmanship, unmatched quality and superior design.



## SPECIFICATIONS



### STRUCTURE

- Earthquake resistant R.C.C. frame structure with sand block walls.



### FLOORING

- Vitrified flooring in living, dining, kitchen & all bedrooms.



### KITCHEN

- Sandwich platform with SS Sink.
- Tile dado up to lintel level on wall above the platform.
- Service platform with adequate storage space.
- Provision for exhaust fan.



### BATHROOMS

- Anti-slip ceramic tiles for flooring.
- Tile dado up to lintel level.
- European type w/c pan in all bathrooms.
- Premium quality Sanitaryware & C.P. fittings.
- Waterproofing in all bathrooms.
- Exhaust fan provision.
- Geyser point in all bathrooms.
- Rigid PVC pipes for drainage & plumbing.



### DOORS

- Both side laminated flush door with wooden frame.
- Standard quality fittings for all doors.



### WINDOWS

- Aluminium / UPVC glass window.



### ELECTRIFICATION

- Power Supply : 1 Phase for 2 BHK & 3 Phase for 3 BHK.
- Modular switches, copper wiring & Safety switch gear.
- Sufficient power outlets & light points provided.



### ELEVATOR

- 2 Highspeed elevators in each block.  
(1 Passenger & 1 Stretcher)



### COLOUR & WALL FINISH

- Internal wall : Single coat plaster with putty.
- External wall : Double coat sand face plaster with texture.



### FIRE

- Fire safety as per norms & regulations.



### TERRACE

- Terrace finished with water proofing & chip mosaic for heat reflection.



## PROXIMITY



### EDUCATIONAL INSTITUTES

Nirma University	: 4.1 km
SOVP International School	: 4.8 km
Global Indian International School	: 1.0 km
Apple International School	: 2.0 km
Dr. Babasaheb Ambedkar Open Uni.	: 3.2 km
Hiranani School	: 4.2 km
Silver Oak University	: 4.6 km
Vishwakarma Govt. Eng. College	: 6.8 km



### CORPORATE OFFICES

Zydia Corporate House	: 3.6 km
Adani Corporate House	: 6.7 km
Libby Corporate House	: 3.6 km



### HOSPITALS

RD Hospital	: 4.3 km
SOVP Holistic Hospital	: 4.5 km
Satyamev Hospital	: 3.3 km
Lifeline Hospital	: 7.5 km



### SPORTS / RELIGIOUS / SHOPPING

Savvy Sports Complex	: 1.6 km
Jain Derasar - Savvy Swimming Center Point	: 1.2 km
Center Point	: 7.0 km
4D Square Mall	: 6.4 km
Vishnudevi Temple	: 6.1 km

## CONVENIENCE THAT IS PRECIOUS



**AIRPORT** 15.8 km  
CHHATRAPATY SHIVAJI AIRPORT



**METRO STATION** 5.6 km  
CHHATRAPATY SHIVAJI



**RAILWAY STATION** 14.7 km  
CHHATRAPATY SHIVAJI



**BUS STATION** 7.5 km  
CHHATRAPATY SHIVAJI



## LOCATION MAP



**DHARTI**  
**Skyline**

**SITE ADDRESS: DHARTI SKYLINE**  
 Opp. Parmeshwar A. (Nandis Gauraj) Garden City,  
 Jagatpur, Ahmedabad - 382424

**FOR INQUIRY, CONTACT:**  
 +91 99130 59000 / 99130 79000  
 E-mail: dhartiskyline@gmail.com



SCAN FOR LOCATION

RERA Registration No.: PR/G/A/ AHMEDABAD/AHMEDABAD CITY/AUDA/MAA10375/30622 • www.gujrera.gujarat.gov.in

DEVELOPER  
**DHARTI**  
 DHARTI INFRACON

DESIGN BY  
**neha consultant**

Facebook, Instagram, LinkedIn, Twitter icons  
 /DHARTIGROUP  
 www.dhartigroup.org

© 2024 DHARTI. All rights reserved. The information provided herein is for informational purposes only and does not constitute an offer of any financial product. The information provided herein is subject to change without notice. The information provided herein is for informational purposes only and does not constitute an offer of any financial product. The information provided herein is for informational purposes only and does not constitute an offer of any financial product. The information provided herein is for informational purposes only and does not constitute an offer of any financial product.



## COMPLETED PROECTS

DHARTI  
**EXOTICA**  
2 & 3 BHK LIVING SPACES & SHOPS

DHARTI  
**SILVER**  
2 & 3 BHK APARTMENTS

a dream destination  
**dharti**  
CRYSTAL

DHARTI BUNGALOWS

DHARTI NAGAR

**2500 +**  
HAPPY CLIENTS

**25 + YEARS**  
OF EXPERIENCE

**15 + LANDMARK**  
PROJECTS

**2000 +**  
UNITS

REGISTERED OFFICE : DHARTI GROUP  
G-401, Dharti Crystal, Opp. Chandkheda Railway Station,  
IOC-Trogad Road, Chandkheda, Ahmedabad, Gujarat 382424, India.

Contact : +91 9974358826 | E-mail : info@dhartigroup.org  
Website : www.dhartigroup.org

MEMBER

**CREDAI**  
AHMEDABAD  
GIHED

PROJECT BY

