

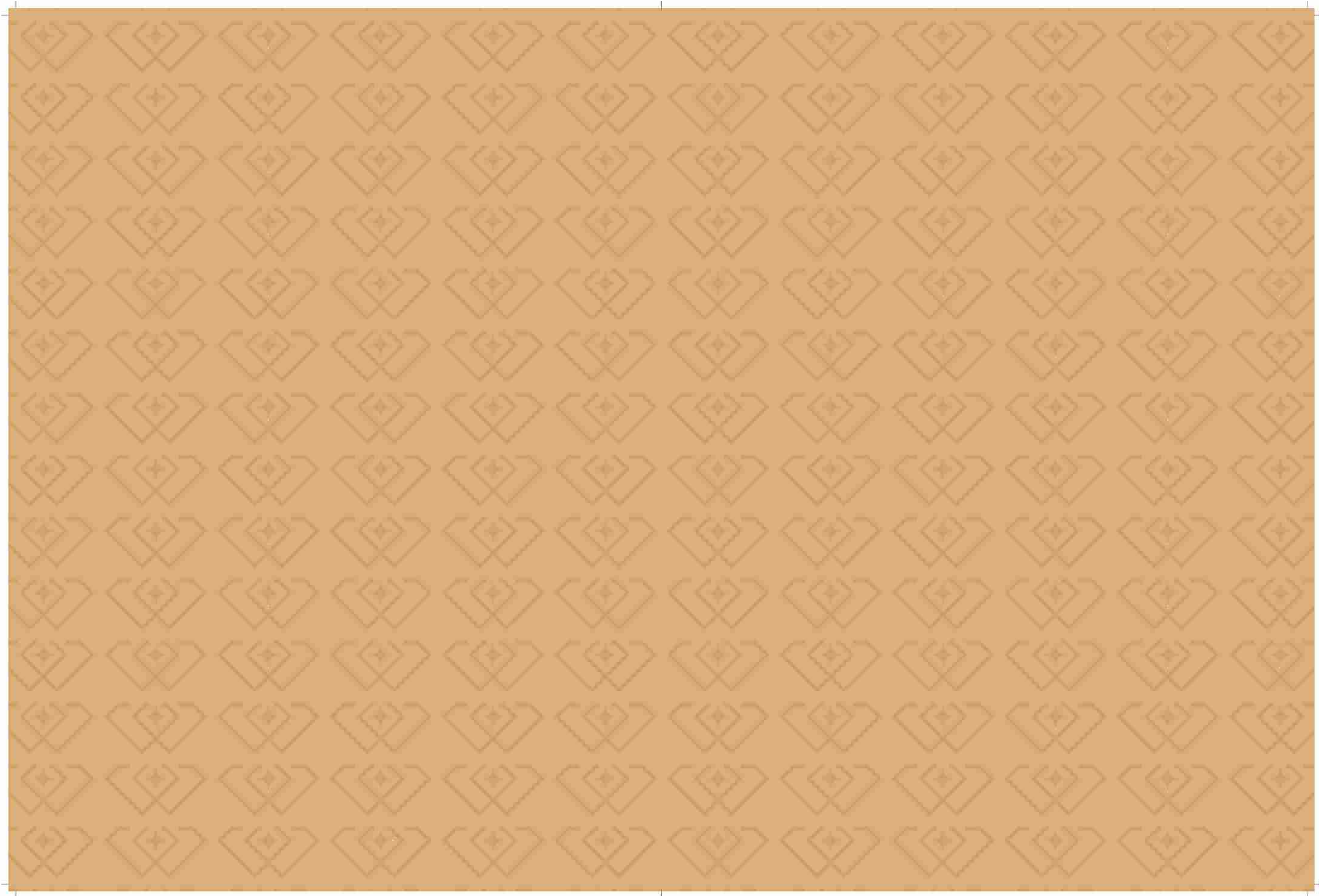
jewel
By Samurai

Corp. Office: G-2, Vinobha Marg, C-Scheme, Jaipur- 302001
Site Office: Jewel by Samurai, TN Mishra Marg, Nirman Nagar, Jaipur
+91 7599 971 111
info@samurairealty.in



RERA Reg. No.: RAJ/P/2024/3374 | RERA Website: www.rera.rajasthan.gov.in

Disclaimer: This brochure is not a legal document. The content herein caters to the conceptual plan to convey the intent & purpose of the project. The relationship between the Promoter/Developer and the actual Customer will be governed strictly by the agreements to be executed. For more to know as it pertains to the terms of this brochure, please refer to the terms of this brochure, sales agreement and or any other promotional document. Please refer to the terms of Agreement for Sale (available on www.rera.rajasthan.gov.in) or approach our sales representative available at G-2, Vinobha Marg, C-Scheme, Jaipur to know about Promoter's/Developer's legal offering and its contractual obligations in respect of purchase of New/Under/In-Progress Project.



A
treasure
meant
to be lived,
not worn

jewel
By Samurai

Overlooking the city like a modern palace.
Jewel is not just a home—it's a statement:
one that is built, lived, and celebrated.



15

Floors

3, 4 & 5

BHK abodes
redefining grandeur

8

Opulent Penthouses

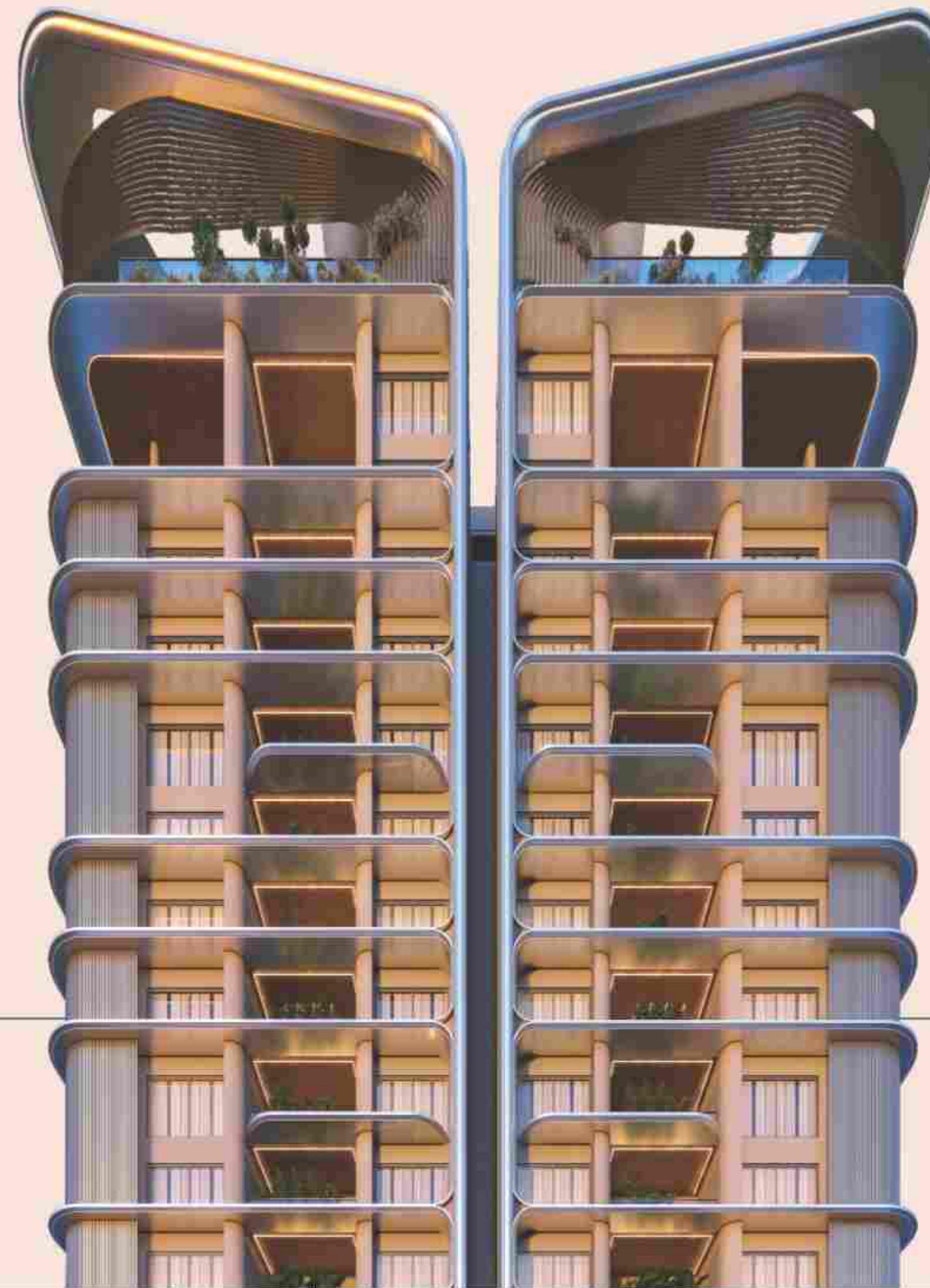
*Some treasures are locked away, admired from a distance.
Others—like Jewel By Samurai—are meant to be experienced, every moment, every day.*

jewel
By Samurai

TN Mishra Marg, Nirman Nagar, Jaipur

Rising elegantly over Nirman Nagar,
its meticulously crafted façade form redefines
sophistication. Every curve, every detail speaks
of prestige and permanence, offering a glimpse
into a world reserved for a discerning few.

Crafted
for the
connoisseurs
of fine living



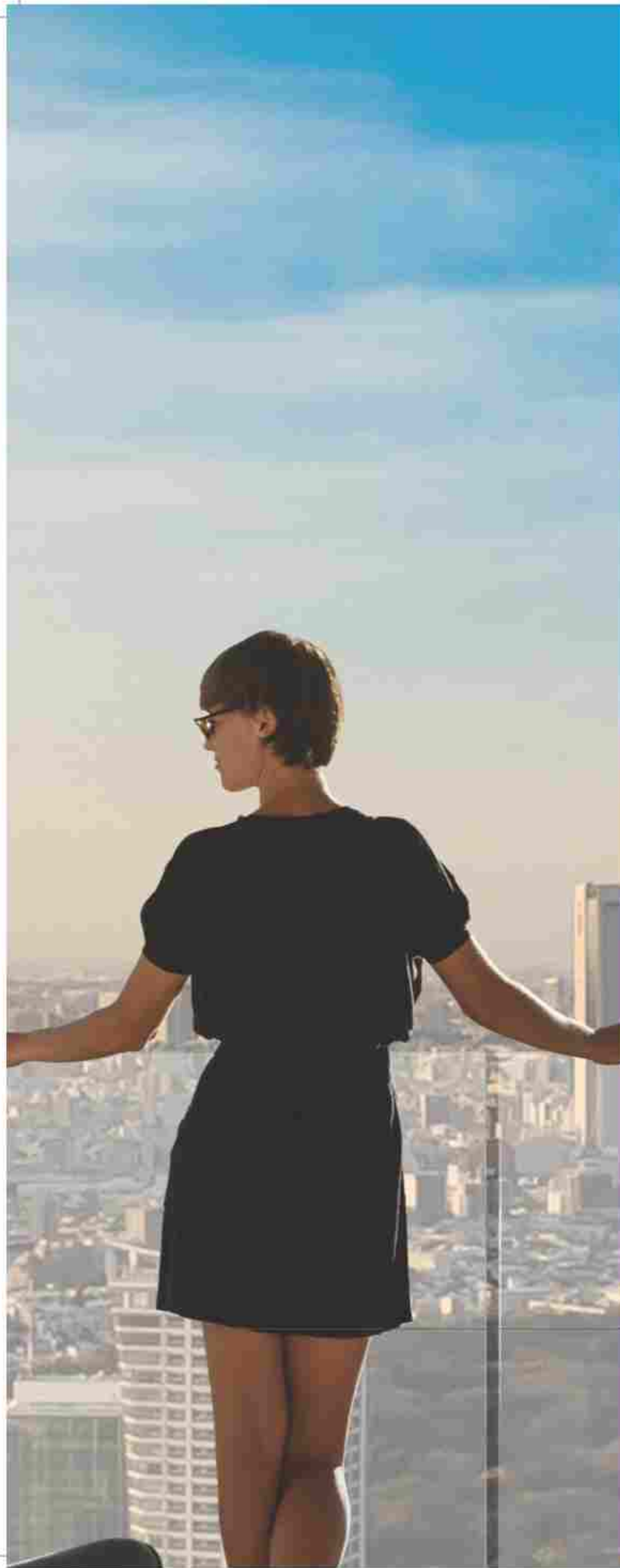
jewel
By Samurai

Jewel is more than just a residence; it is a statement of timeless elegance, precision craftsmanship, and unmatched exclusivity. Every detail is meticulously designed to create an experience that transcends the ordinary. From architecturally stunning spaces to the finest materials and finishes, Jewel reflects a commitment to perfection. Here, luxury is not just about opulence but about the artistry and thoughtfulness that shape every corner. It is a place where sophistication meets comfort, where every element is curated for those who seek nothing but the extraordinary.

A
masterpiece
of design,
craftsmanship
and exclusivity

jewel
By Salsandra





It's the tallest, the grandest, the most luxurious Jewel in the vicinity

Standing leagues above the rest, this architectural marvel redefines the skyline. With its towering height and striking presence, it offers panoramic views that stretch beyond the horizon, making it the most sought-after address in the area.

An address that commands admiration



- Jaipur International Airport : 11 km
- Jaipur Junction : 5.9 km
- MI Road : 8.7 km
- Ajmer Highway : 2 km
- Collectorate : 8.3 km
- World Trade Park : 7.2 km



Jewel is located at Nirman Nagar which gives super connectivity to the places of hyper growth. It makes life easy and lifestyle complete. Come, be at the heart of the city and experience a wonderful life connected to everything that matters.

• Jaipur International Airport

Luxuriously sustainable in every sense

- Pre certified green building ↗
- Solar powered amenities ↗
- Sustainable water usage ↗
- Rainwater harvesting ↗
- Sensors to reduce wastage ↗
- Waste and sewerage management systems ↗
- Top soil conservation ↗
- Natural light ventilation ↗

At Jewel, elegance is embraced with a sense of responsibility. As a pre-certified green building, it is designed to minimise impact and maximise comfort. Solar powered amenities, sustainable water usage, and rainwater harvesting ensure efficiency, while smart sensors prevent wastage. Advanced waste management keeps the environment pristine, topsoil conservation preserves natural integrity, and abundant natural light and ventilation reduce reliance on artificial cooling.

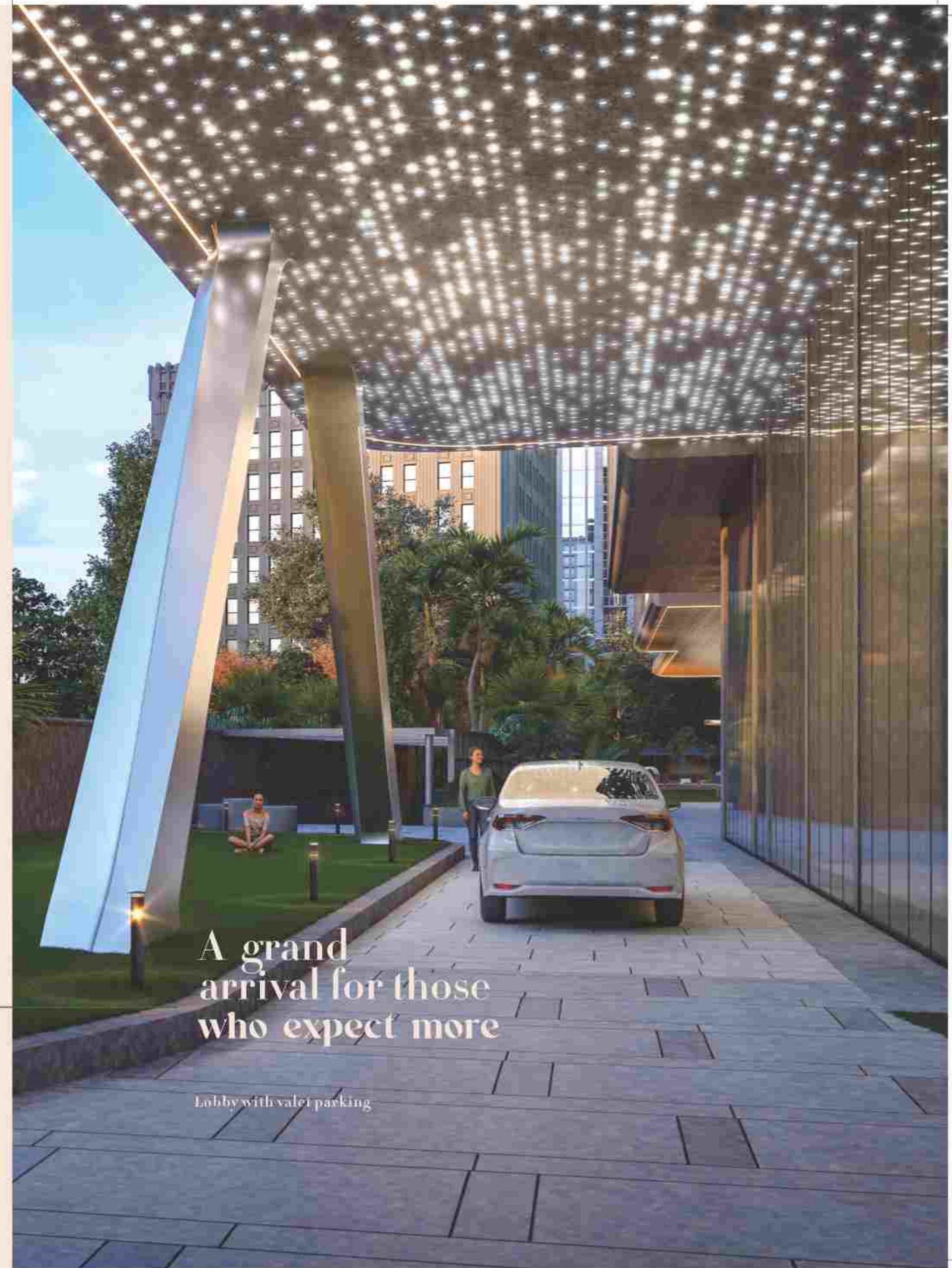




Living
the dream
is common.
Owning Jewel
is rare



Jewel welcomes its residents and visitors with elegance. There are features that surprise everyone by their sheer magnificence. Get ready to touch the class reserved for a selected few. After all, the first impression is the last impression.



A grand arrival for those who expect more

Lobby with valet parking

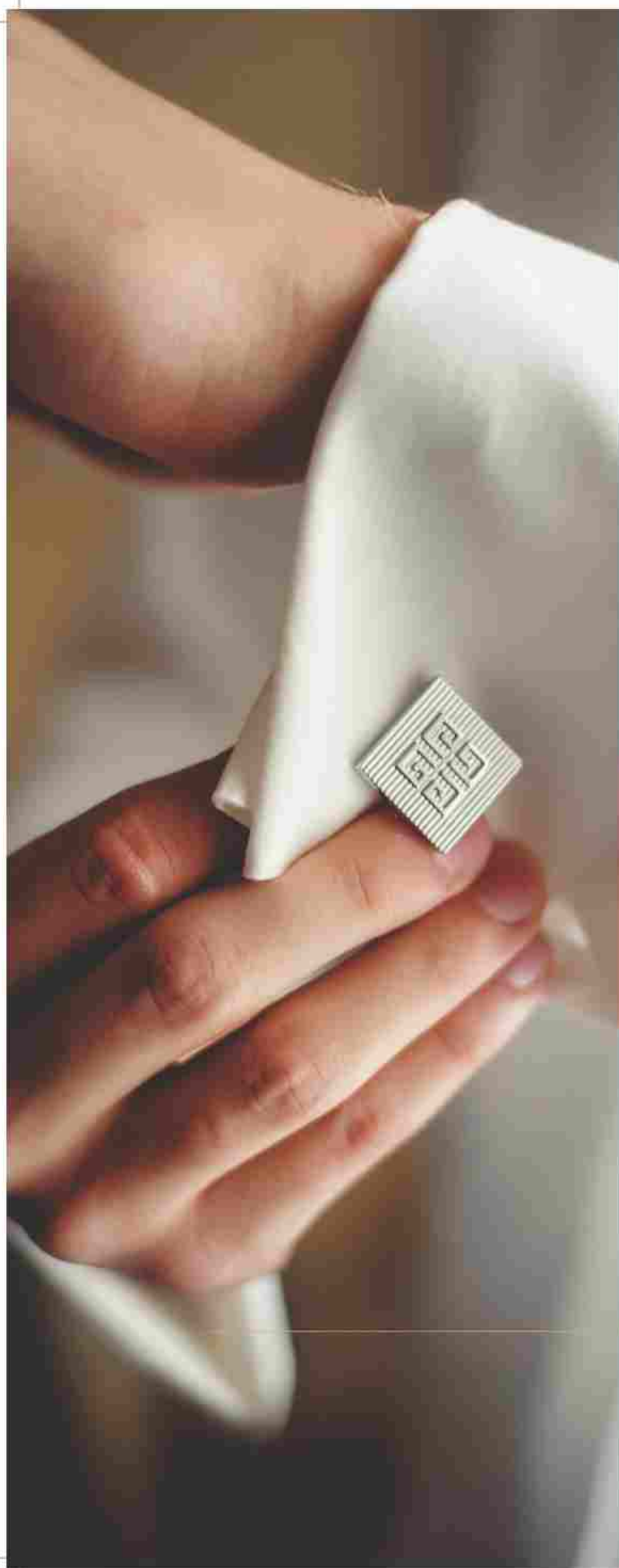


The first impression as rare as Jewel Itself

- Private 24X7 concierge +
- Private keycard access lift for each apartment +
- Café +
- Mezmarizing water bodies +
- Dedicated library +
- Co-working spaces +
- Banquet hall +



Double height lobby and ultra-modern waiting lounges creates a distinct aura at Jewel. Each feature is there to make residents feel special and enrich their lives with extraordinary experiences. Come and meet a life where glamour and glory are interwoven into a seamless pattern of inviting luxury.



Beyond a home, beyond time, Jewel is a masterpiece crafted for eternity

Life is a fine blend of science and art.
Jewel is the living example of the notion.
It's not only about construction, it's about
a creation that enriches life with positive values
and never-ending bliss. Open up to a world
where life is driven by the beauty of elements.



jewel

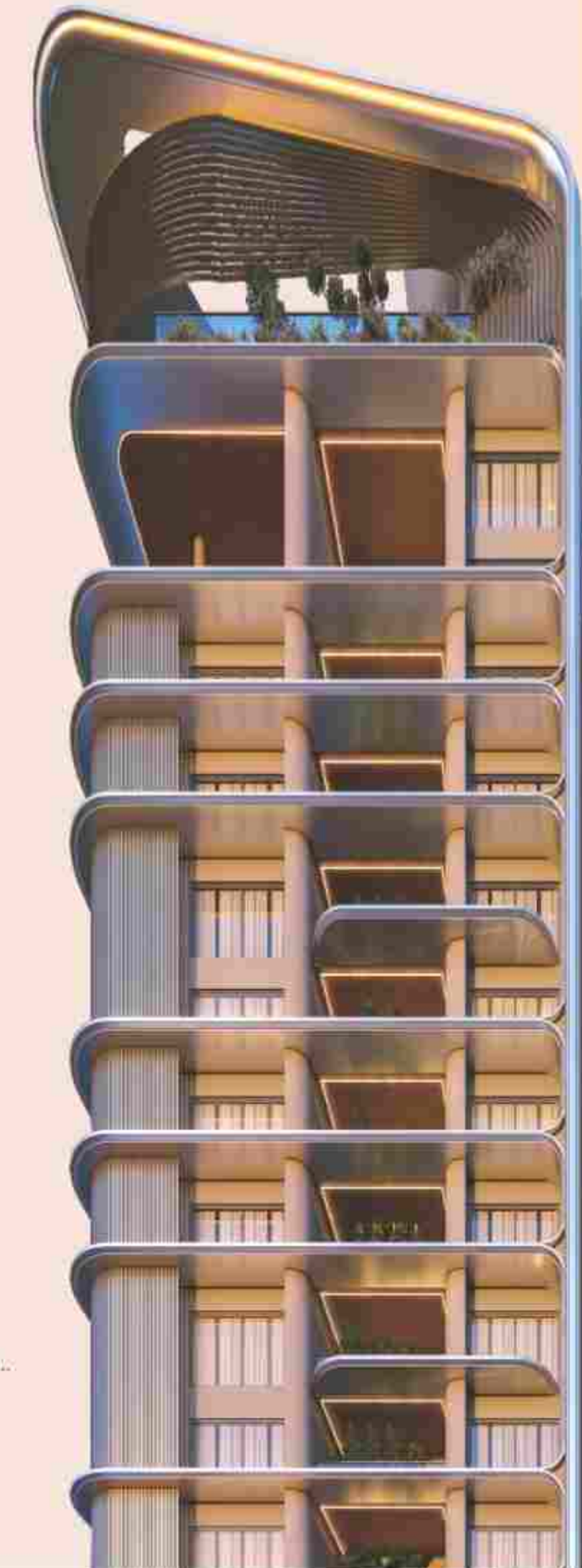
- + Well-defined rectangular & square rooms
- + 100 % Power back up
- + Vastu-compliant apartment layout
- + Amenities & utilities designed as per Vastu
- + Lush panoramic greenery within embraced by a serene green belt outside

Key Highlights of jewel

By Samurai

Jewel offers a thoughtfully curated selection of amenities and facilities, designed to elevate your lifestyle while aligning with Vaastu principles. Every space, from the grand entrance to the serene landscaped gardens, is crafted to enhance harmony and well-being. Experience world-class recreational zones, state-of-the-art fitness centers, and dedicated spaces for leisure and community engagement. With meticulous planning, every utility and convenience is seamlessly integrated, ensuring a life of comfort, balance, and effortless luxury.

- 3 Sided Open Residences @ 160 Ft. Road
 - Car Wash Area
 - Car Charging Area
 - Rooftop Garden Café on 16th Floor
 - Cafeteria
 - Kids Play Area
 - Multi-purpose Hall with Garden Pool
 - Indoor All Weather Swimming Pools
 - Temple
 - Yoga & Zumba Room
 - Concierge Desk
 - Gymnasium
 - Movie Theatre
 - Board Games Room
 - Spa / Massage Room
 - Salon
 - Guest Rooms
 - Pickle Ball & Badminton Court
 - Squash Court
 - Resident Concierge Office
 - E-com Pick Up Service
 - Walking Track
 - Co-working Area
 - Key Card Accessible Private Lifts
 - Mechanical Garbage Chute
- and many more...





**Jewel
of Indulgence
A 40,000 Sq. Ft.
exclusive club
of Unparalleled
Luxury**

The clubhouse at Jewel is a pure delight. Two exquisite swimming pools and lush green surroundings open up a unique world of unwinding. A bouquet of world-class amenities and stylish lounges present impressions of a resort like lifestyle. Leave the ordinary aside, delve into the joy of upper-class socialization.



Celebration of life & its moments

- Banquet hall +
- Gathering lawn +
- Pool deck +
- Water feature with sculpture +
- Green belt with meditation zone +
- Dedicated visitor parking +

Samurai Jewel gives exclusive space to life's celebrations. There are facilities to compliment the spirit of joy and make every occasion memorable. It's a treat for those who believe in making life a series of celebrations. Feel happy and embrace a life full of excitement and happening moments.



Diamond Clubhouse
Ground Floor Plan



Legend

- | | | |
|------------------------------|------------------|------------------------------|
| 1. Entrance | 4. Club Lift | 7. Co-working & Tuition Area |
| 2. Waiting Lounge/ Cafeteria | 5. Male Toilet | 8. Conference Room |
| 3. Café Counter | 6. Female Toilet | |

Diamond Clubhouse
Ground Floor Plan



Café & Waiting Lounge – A cozy space to relax, socialize, or meet guests while enjoying freshly brewed coffee.



Conference Room – A private, sophisticated setup for meetings, discussions, and business presentations.



Co-working / Tuition Area – A quiet, well-equipped workspace for professionals, students, and freelancers.

Diamond Clubhouse
First Floor Plan



Legend

- | | | | |
|--------------|--------------------|-----------------|---------------|
| 1. Lobby | 4. Zumba/Yoga Room | 7. Male Toilet | 10. Open Deck |
| 2. Club Lift | 5. Kids Deck | 8. Pilates Room | |
| 3. Gymnasium | 6. Female Toilet | 9. Store Room | |

Diamond Clubhouse
First Floor Plan



Gym – A state-of-the-art fitness center with advanced equipment for all workout needs.



Pilates Room – A dedicated area with professional equipments for strength and flexibility training.



Yoga & Zumba Room – A peaceful and vibrant space designed for yoga, dance, and wellness sessions.



Kids Room – A fun, safe, and interactive space designed for children to play and learn.

Diamond Clubhouse
Second Floor Plan



Legend

- | | | | |
|------------------------------|----------------------|--------------------------|-------------------|
| 1. Lobby | 4. Jacuzzi | 7. Home Theatre | 10. Female Toilet |
| 2. All Weather Swimming Pool | 5. Wooden Deck | 8. Shower/Changing Rooms | 11. Club Lift |
| 3. Kids Pool | 6. Indoor Games Room | 9. Male Toilet | |

Diamond Clubhouse
Second Floor Plan



All Weather Swimming Pool – A temperature controlled pool for year round swimming and relaxation.



Games Room – A lively space with board games, pool tables, and other recreational activities.



Jacuzzi – A luxurious jacuzzi for ultimate relaxation and rejuvenation.



Home Theater – A private mini-cinema for an immersive movie experience with family and friends.



Jade Clubhouse
Basement Floor Plan



Legend

- | | | |
|------------------|------------------|-----------------|
| 1. Waiting Lobby | 4. Male Toilet | 7. Club Lift |
| 2. Male Spa | 5. Female Toilet | 8. Sunken Court |
| 3. Female Spa | 6. Lift Lobby | |



A premium space offering beauty, wellness, and relaxation services.

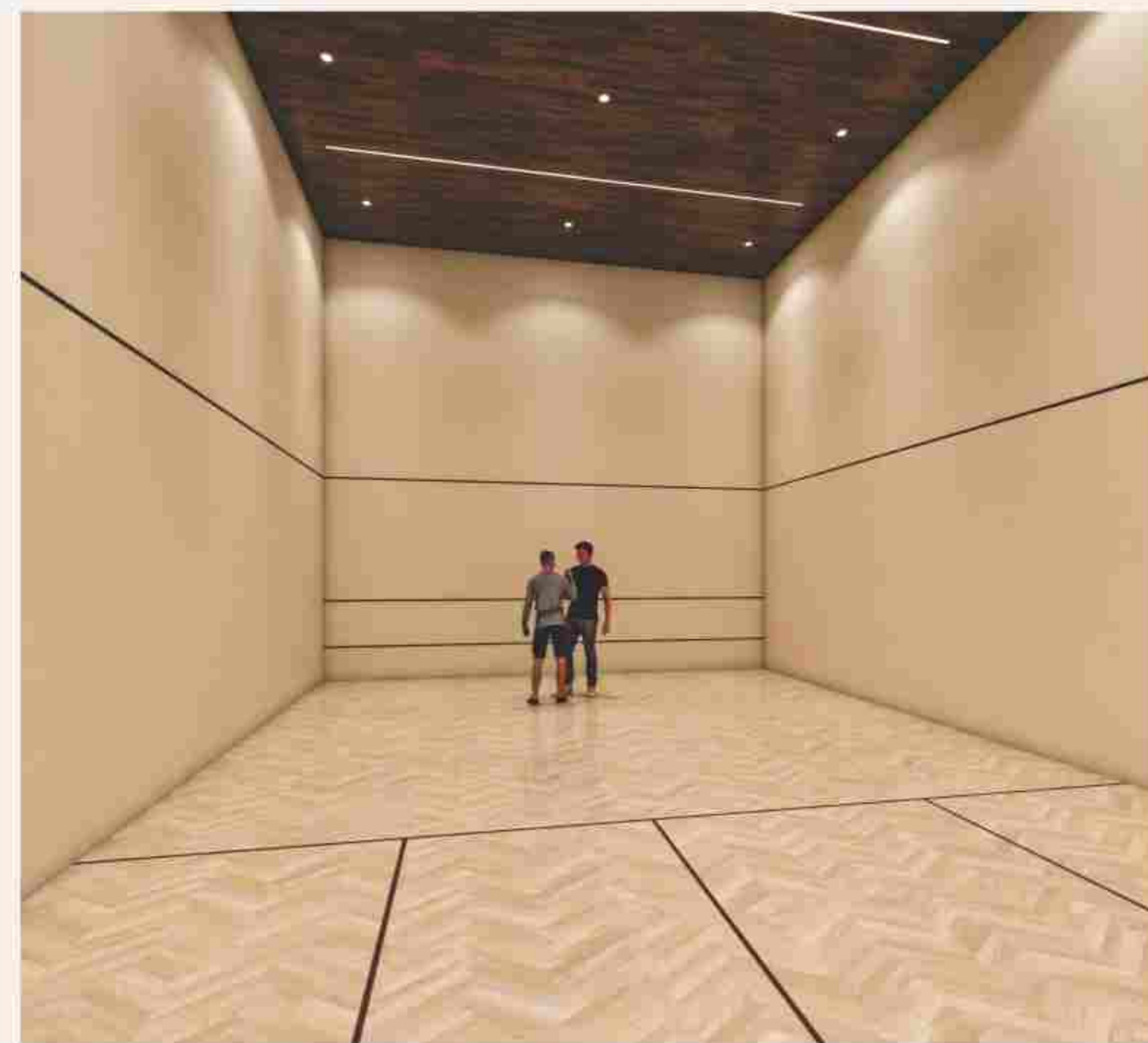
jewel
By Samurai

Jade Clubhouse
Ground Floor Plan



Legend

- | | |
|------------------|------------------|
| 1. Squash Court. | 4. Lift Lobby |
| 2. Seating Arena | 5. Male Toilet |
| 3. Lift Lobby | 6. Female Toilet |



A professional standard indoor squash court for fitness enthusiasts.

jewel
By Samurai

Jade Clubhouse
First Floor Plan



Legend

- | | |
|-------------------|-----------|
| 1. Lift Lobby | 4. Toilet |
| 2. Office | 5. Lift |
| 3. Spectator Deck | |



A professional work environment for residents needing a private office.
Balcony area to watch the game of your loved ones.

jewel
By Samurai

Jade Clubhouse
Second Floor Plan



Legend

- 1. Lift Lobby
- 2. Office
- 3. Guestroom x 4
- 4. Club Lift



Comfortable and well-furnished guest accommodations for visitors.

jewel
By Samurai

Jade Clubhouse
Third Floor Plan



Legend

- | | |
|----------------------------------|------------------|
| 1. Lift Lobby | 4. Male Toilet |
| 2. Pickle Ball & Badminton Court | 5. Female Toilet |
| 3. Club Lift | |



A high quality court for an energetic and competitive game of badminton & pickle ball.

jewel
By Samurai



Landscape Plan

Legend

- 1 Entry Ramp
- 2 E-commerce Pickup Zone
- 3 Guard Room with Storage
- 4 Waiting Area
- 5 Arrival Plaza
- 6 Water Feature
- 7 Gravel Garden
- 8 Seating Deck
- 9 Kids Play Area
- 10 Sit-out Lounge Deck
- 11 Entry Ramp to Basement
- 12 Stepped Water Feature
- 13 Driveway
- 14 Shaded Seating Deck
- 15 Plantation on Mounds
- 16 Gathering Lawn
- 17 Water Feature with Sculpture
- 18 Swimming Pool
- 19 Shaded Pavilion
- 20 Swimming Pool Deck
- 21 Kids Pool
- 22 Open Shower
- 23 Stepping Stones in Gravel
- 24 Temple
- 25 Meditation Lawn
- 26 Shaded Meditation Deck
- 27 Service Area
- 28 Banquet Area
- 29 Car Washing Bays
- 30 Exit Ramp from Basement
- 31 Senior Citizen Seating Deck
- 32 Exit Plaza
- 33 Driver Waiting Area
- 34 Guard Room with Facilities
- 35 Exit Ramp
- 36 Visitors' Parking
- 37 Clubhouse II



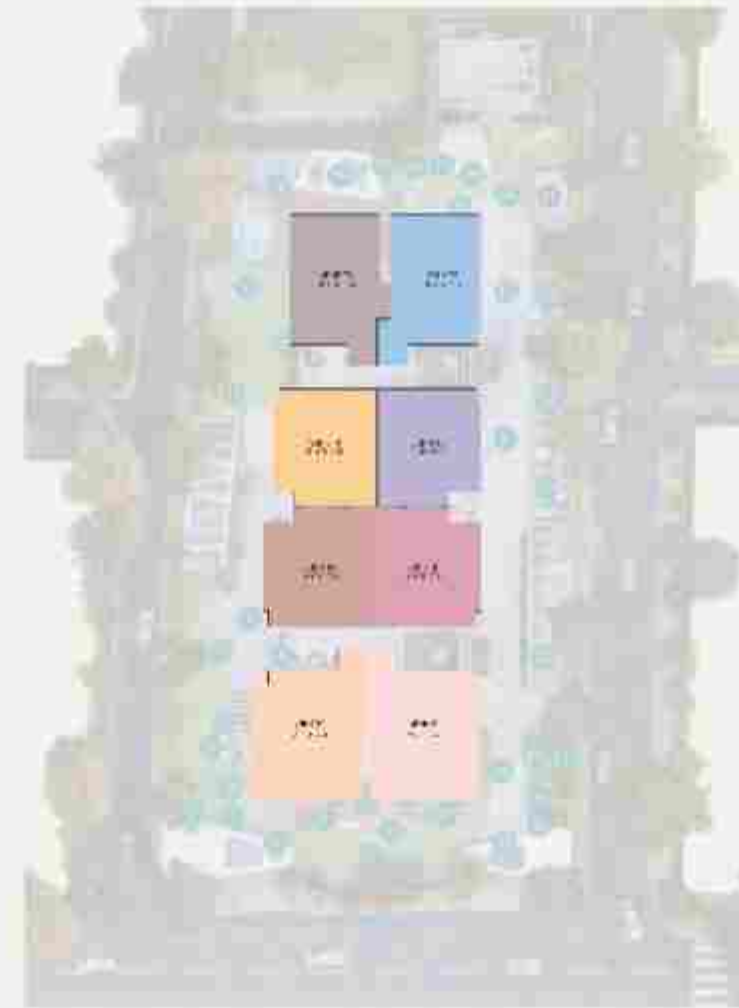
Typology Plan



1st to 3rd Floor



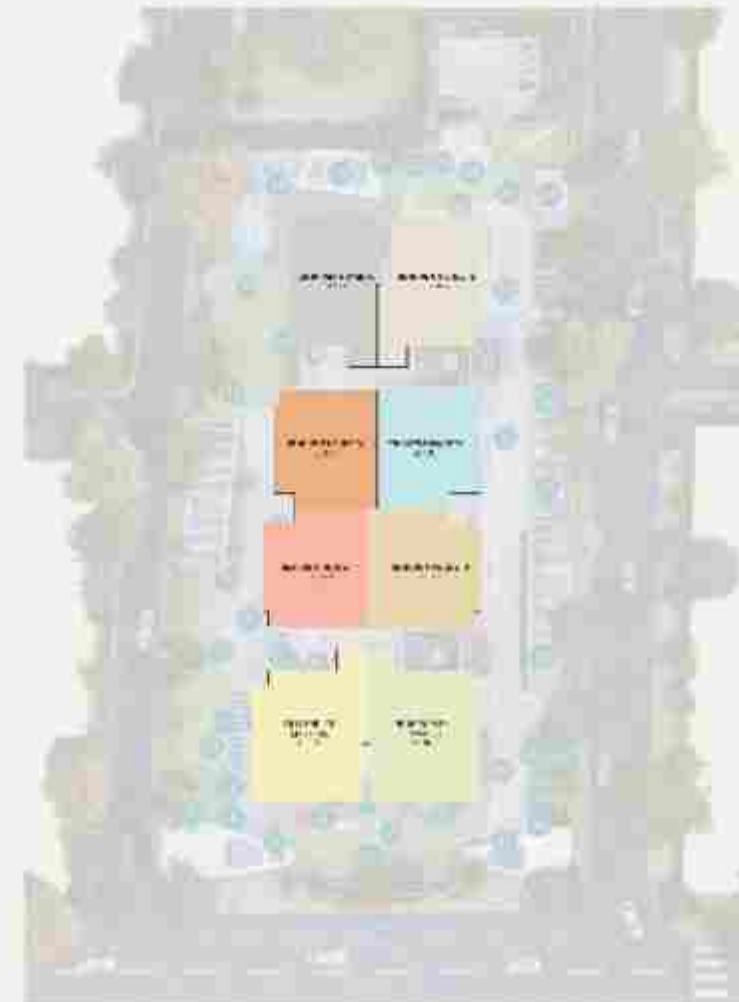
4th to 12th Floor



14th Floor



15th Floor



Area Table (1st to 3rd Floor)

	FLAT NO.	UNIT TYPE	BUILT UP AREA/UNIT	SBUA/UNIT	SERVANT AREA	TOTAL SBUA
	A-103-303	3BHK-T1	2051.51	2947.01	130.49	3077.50
	A-104-304	3BHK-T2	2301.23	3279.14	130.49	3409.63
	B-101-301	4BHK-T3	2268.62	3235.77	131.49	3367.26
	B-102-302	3BHK-T5	2263.94	3229.54	131.49	3361.03
	B-103-303	3BHK-T3	2070.90	2972.80	131.49	3104.29
	B-104-304	3BHK-T4	2094.02	3003.55	131.49	3135.04

Area Table (4th to 12th Floor)

	FLAT NO.	UNIT TYPE	BUILT UP AREA/UNIT	SBUA/UNIT	SERVANT AREA	TOTAL SBUA
	A-401-1201	4BHK-T1	2762.19	3844.34	130.60	3974.93
	A-402-1202	4BHK-T2	2692.75	3799.86	130.60	3930.46
	A-403-1203	3BHK-T1	2051.51	2947.01	130.60	3077.61
	A-404-1204	3BHK-T2	2301.23	3279.14	130.60	3409.74
	B-401-1201	4BHK-T3	2268.62	3235.77	131.49	3367.26
	B-402-1202	3BHK-T5	2263.94	3229.54	131.49	3361.03
	B-403-1203	3BHK-T3	2070.90	2972.80	131.49	3104.29
	B-404-1204	3BHK-T4	2094.02	3003.55	131.49	3135.04

Area Table (14th Floor)

	FLAT NO.	UNIT TYPE	BUILT UP AREA/UNIT	SBUA/UNIT	SERVANT AREA	TOTAL SBUA
	A-1401	5BHK TRIPLEX	6608.56	9444.88	130.49	9575.37
	A-1402	6BHK TRIPLEX	6824.01	9731.44	130.49	9861.93
	A-1403	3BHK-T1	2051.51	2947.01	130.60	3077.61
	A-1404	3BHK-T2	2301.23	3279.14	130.60	3409.74
	B-1401	4BHK-T3	2268.62	3235.77	131.49	3367.26
	B-1402	3BHK-T5	2263.94	3229.54	131.49	3361.03
	B-1403	3BHK-T3	2070.90	2972.80	131.49	3104.29
	B-1404	3BHK-T4	2094.02	3003.55	131.49	3135.04

Area Table (15th Floor)

	FLAT NO.	UNIT TYPE	BUILT UP AREA/UNIT	SBUA/UNIT	SERVANT AREA	TOTAL SBUA
	A-1501	3BHK-PT1	3642.06	5280.95	130.49	5411.43
	A-1502	3BHK-PT2	4044.56	5815.27	130.49	5946.76
	B-1501	3BHK-PT6	3655.45	5298.76	131.49	5430.25
	B-1502	3BHK-PT5	3793.32	5482.12	131.49	5613.61
	B-1503	3BHK-PT3	3626.54	5260.31	131.49	5391.80
	B-1504	3BHK-PT4	3752.45	5427.77	131.49	5559.26



Typical Floor Plan



Unit Plan

Tower A - 4th, 5th, 6th, 7th, 8th, 9th, 10th, 11th, 12th & 14th FLOOR



Unit No. 01 (4 BHK T1)

Flat No. A: 401-1201 | Unit Type: 4 BHK-T1 | B.U.A/Unit: 2890.48 Sq. Ft. | S.B.U.A/Unit: 3844.34 Sq. Ft.
Servant Area: 130.60 Sq. Ft. | Total SBUA: 3974.93 Sq. Ft.



Unit Plan

Tower A - 4th, 5th, 6th, 7th, 8th, 9th, 10th, 11th, 12th & 14th FLOOR



Unit No. 02 (4 BHK T2)

Flat No. A: 402-1202 | Unit Type: 4 BHK-T2 | B.U.A/Unit: 2857.04 Sq. Ft. | S.B.U.A/Unit: 3799.86 Sq. Ft.
Servant Area: 130.60 Sq. Ft. | Total SBUA: 3930.46 Sq. Ft.



Unit Plan

Tower A - 1st, 2nd, 3rd, 4th, 5th, 6th, 7th, 8th, 9th, 10th, 11th, 12th & 14th FLOOR



Unit No. 03 (3 BHK T1)

Flat No. A: 103-1403 | Unit Type: 3 BHK-T1 | B.U.A/Unit: 2215.80 Sq. Ft. | S.B.U.A/Unit: 2947.01 Sq. Ft.
 Servant Area: 130.60 Sq. Ft. | Total SBUA: 3077.61 Sq. Ft.

Unit Plan

Tower B - 1st, 2nd, 3rd, 4th, 5th, 6th, 7th, 8th, 9th, 10th, 11th, 12th & 14th FLOOR



Unit No. 01 (4 BHK T3)

Flat No. B: 101-1401 | Unit Type: 4 BHK-T3 | B.U.A/Unit: 2432.91 Sq. Ft. | S.B.U.A/Unit: 3235.77 Sq. Ft.
Servant Area: 131.49 Sq. Ft. | Total SBUA: 3367.26 Sq. Ft.



Unit Plan

Tower B - 1st, 2nd, 3rd, 4th, 5th, 6th, 7th, 8th, 9th, 10th, 11th, 12th & 14th FLOOR



Unit No. 02 (3 BHK T5)
Flat No. B: 102-1402 | Unit Type: 3 BHK-T5 | B.U.A/Unit: 2428.23 Sq. Ft. | S.B.U.A/Unit: 3229.54 Sq. Ft.
Servant Area: 131.49 Sq. Ft. | Total SBUA: 3361.03 Sq. Ft.

Unit Plan

Tower B - 1st, 2nd, 3rd, 4th, 5th, 6th, 7th, 8th, 9th, 10th, 11th, 12th & 14th FLOOR



Unit No. 03 (3 BHK T3)

Flat No. B: 103-1403 | Unit Type: 3 BHK-T3 | B.U.A/Unit: 2235.19 Sq. Ft. | S.B.U.A/Unit: 2972.80 Sq. Ft.
Servant Area: 131.49 Sq. Ft. | Total SBUA: 3104.29 Sq. Ft.

Unit Plan

Tower B - 1st, 2nd, 3rd, 4th, 5th, 6th, 7th, 8th, 9th, 10th, 11th, 12th & 14th FLOOR



Unit No. 04 (3 BHK T4)

Flat No. B: 104-1404 | Unit Type: 3 BHK-T4 | B.U.A/Unit: 2258.31 Sq. Ft. | S.B.U.A/Unit: 3003.55 Sq. Ft.
Servant Area: 131.49 Sq. Ft. | Total SBUA: 3135.04 Sq. Ft.



Interior Views



Interior Views





8 PENTHOUSES WITH PRIVATE INFINITY POOL (2 TRIPLEX & 6 DUPLEX)

Triplex Penthouse
Tower A - 14th+15th+Terrace Floor



Lower Level



Upper Level



Terrace



(5 BHK + STUDY TRIPLEX)

Flat No. A: 1401 | Unit Type: 5BHK TRIPLEX | B.U.A/Unit: 7101.41 Sq. Ft. | S.B.U.A/Unit: 9444.88 Sq. Ft.
Servant Area: 130.49 Sq. Ft. | Total SBUA: 9575.37 Sq. Ft.

Triplex Penthouse



Lower Level



Upper Level



Terrace



(5 BHK + STUDY TRIPLEX)

Flat No. A: 1401 | Unit Type: 5BHK TRIPLEX | B.U.A/Unit: 7101.41 Sq. Ft. | S.B.U.A/Unit: 9444.88 Sq. Ft.
Servant Area: 130.49 Sq. Ft. | Total SBUA: 9575.37 Sq. Ft.

Triplex Penthouse
Tower A - 14th+15th+Terrace Floor



Lower Level



Upper Level



Terrace



(6 BHK TRIPLEX)

Flat No. A: 1402 | Unit Type: 6 BHK TRIPLEX | B.U.A/Unit: 7316.87 Sq. Ft. | S.B.U.A/Unit: 9731.44 Sq. Ft.
Servant Area: 130.49 Sq. Ft. | Total SBUA: 9861.93 Sq. Ft.

Duplex Penthouse
Tower A - 15th Floor + Terrace Floor



Lower Level



Terrace



Unit No. 01 (3 BHK PENTHOUSE T1)

Flat No. A: 1503 | Unit Type: 3 BHK-PT1 | B.U.A/Unit: 3970.64 Sq. Ft. | S.B.U.A/Unit: 5280.95 Sq. Ft.
Servant Area: 130.49 Sq. Ft. | Total SBUA: 5411.43 Sq. Ft.



Duplex Penthouse
Tower A - 15th Floor + Terrace Floor



Lower Level



Terrace



Unit No. 02 (3 BHK PENTHOUSE T2)
Flat No. A: 1504 | Unit Type: 3 BHK-PT2 | B.U.A/Unit: 4373.14 Sq. Ft. | S.B.U.A/Unit: 5816.27 Sq. Ft.
Servant Area: 130.49 Sq. Ft. | Total SBUA: 5946.76 Sq. Ft.



Duplex Penthouse
Tower B - 15th Floor + Terrace Floor



Lower Level



Terrace



Unit No. 01 (3 BHK PENTHOUSE T6)

Flat No. B: 1501 | Unit Type: 3 BHK-PT6 | B.U.A/Unit: 3984.03 Sq. Ft. | S.B.U.A/Unit: 5298.76 Sq. Ft.
Servant Area: 131.49 Sq. Ft. | Total SBUA: 5430.25 Sq. Ft.

Duplex Penthouse
Tower B - 15th Floor + Terrace Floor



Lower Level



Terrace



Unit No. 02 (3 BHK PENTHOUSE T5)

Flat No. B: 1502 | Unit Type: 3 BHK-PT5 | B.U.A/Unit: 4121.90 Sq. Ft. | S.B.U.A/Unit: 5482.12 Sq. Ft.
Servant Area: 131.49 Sq. Ft. | Total SBUA: 5613.61 Sq. Ft.

Duplex Penthouse
Tower B - 15th Floor + Terrace Floor



Lower Level



Terrace



Unit No. 03 (3 BHK PENTHOUSE T3)

Flat No. B: 1503 | Unit Type: 3BHK-PT3 | B.U.A/Unit: 3955.12 Sq. Ft. | S.B.U.A/Unit: 5260.31 Sq. Ft.
Servant Area: 131.49 Sq. Ft. | Total SBUA: 5391.80 Sq. Ft.

Duplex Penthouse
Tower B - 15th Floor + Terrace Floor



Lower Level



Terrace



Unit No. 04 (3 BHK PENTHOUSE T4)
 Flat No. B: 1504 | Unit Type: 3BHK-PT4 | B.U.A/Unit: 4081.03 Sq. Ft. | S.B.U.A/Unit: 5427.77 Sq. Ft.
 Servant Area: 131.49 Sq. Ft. | Total SBUA: 5559.26 Sq. Ft.

Specifications

The Finer Details

Structure

General	RCC framed earthquake resistant structure
Steel	TATA
Cement	Ultratech/J.K. Lakshmi/Wonder or equivalent
Bricks	AAC Block

Building Specifications

Compulsory VRF/VRV Fittings with dedicated AC outdoor location
Fire fighting & fire alarm system
Gas pipeline/Gas bank
Vaastu compliant
Provision of DTH TV connection along with Wi-Fi connection
Silent DG with power back-up in common areas
Automatic state-of-the-art large & spacious high speed elevators with access control system
Garbage collection point, garbage chute with bio-composters
Rainwater harvesting system
Sewerage treatment plant (STP)
Boom barriers at entrance
Outer plumbing in shafts to avoid seepage & better maintenance
Single point/integrated prepaid metering system
Wi-Fi enabled common areas
High-speed lifts
EV charging station & car wash area

Security

CCTV security in common areas
EPABX system for security & intra-building communications
Video door phone in each flat with access by mobile app
Access card system in common staircase & elevators
24X7 guarded security
State-of-the-art QR Code & Wi-Fi based access management system

Electricals

General	Separate meter for lighting in common areas, elevators and pumps
High Side Electrical Equipment	Transformer, meter, VCB panel etc. as per design
Electrical Fitting	Concealed copper wiring in PVC conduit
Wires & Cables	Polycab/Finolex/RR Cable/Havells or equivalent
PVC Conduit	AKG/BEC/Raj Shree/Jinda/Shiva or equivalent
Switches & Sockets	Modular switch & socket- Norisys/ Legrand/Anchor or equivalent
Power Backup	Silent DG with power backup of 3KVA in each residence
Inverter Ready	Provision for inverter with all electrical fittings
Smart Home Ready	All electrification/fittings required for home automation

Staircase

Riser & Tread	Natural stone or equivalent
Hand Rail	M.S. railing with enamel paint satin finish

Common Lobby

Flooring	Italian marble installed in flush method to avoid dampening & epoxy grouting to ensure better life, binding & water proofing
Ceiling	Paint & lights as per design
Walls	Fully decorated walls as per design
Furniture & Decor	As per design

Internal Specifications

Main Door	Veneer/MDF designer flush door with deco & customised as per customer requirement 4 feet in width with smart lock & customised handles
Flooring	Italian marble installed in flush method to avoid dampening & epoxy grouting to ensure better life, binding & water proofing in whole apartment
Walls & Ceiling	POP work with oil primer on walls & ceilings
Other Doors	Designer flush door with laminate- Greenply/Doormak/National Door or equivalent
Switches & Sockets	Modular switch & socket- Norisys/Legrand/Anchor or equivalent
Hardware	Yale/Dorset or equivalent

Kitchen

Flooring	Italian marble installed in flush method to avoid dampening & epoxy grouting to ensure better life, binding & water proofing
Wall Finish	POP work with oil primer on walls & ceilings
Wall Tile	2 Ft. Height from countertop
Counter Top	Artificial marble/full body quartz finish tiles/granite
C.P. Fitting	Roca/Toto/Kohler/Grohe or equivalent
Kitchen Sink	Satin S.S. finish sink- Jaquar/Neelkanth or equivalent
Switches	Modular switch & socket- Norisys/Legrand/Anchor or equivalent

Toilets

Flooring	Italian marble installed in flush method to avoid dampening & epoxy grouting to ensure better life, binding & water proofing
Wall Finish	Double charged vitrified tiles in Italian finish (600X1200)- Somany/Asian Tiles/Kajaria or equivalent using chemical/adhesive to increase space & epoxy grouting to ensure better life, binding & water proofing till false ceiling
Sanitary Fitting	European wall hung W/C diverter with spout/ Basin diverter-Toto/Roca/Grohe/ Kohler or equivalent
Basin	Designer wash basin
Shower	Rain shower of ISO certified quality
Hygiene	Separate dry and wet areas with provision for glass partition
Door	Designer flush door with laminate- Greenply/Doormak/National Door or equivalent
Switch & Socket	Modular switch & socket- Norisys/Legrand/Anchor or equivalent
False Ceiling	Grid panel ceiling

Balcony

Flooring	Double charged vitrified tiles installed in flush method to avoid dampening & epoxy grouting to ensure better life, binding & water proofing
Hand Rail	Glass railing with state-of-art aluminium sections & aluminium rails
Wall Finish	Texture paint
Roof	Finished roof with wooden finish ceiling & lights
Utility Balcony	Space for secondary basin, washing machine, racks/shelves & retractable clothes dryer in each utility balcony

The Makers



The Journey of Samurai Group: Four Decades of Crafting Excellence

Founded in the early 1980s by the family patriarch, Mr. Tarachand Goel, a visionary entrepreneur far ahead of his times, Samurai Group began as a small trading company dealing in antiques and furniture. Over the years it has expanded into a diversified enterprise spanning real estate, furniture manufacturing, interiors and retail. Now with over 40 years of extensive experience, Samurai Group is a highly respected brand, renowned for its commitment to craftsmanship, innovation and luxury living. A Legacy Built on Vision & Leadership

The baton of this remarkable journey is presently with Mr. Tarun Goel and Mr. Duksh Goel, who at the helm of the company are propelling Samurai Group to new heights.

- Mr. Tarun Goel, a seasoned entrepreneur with decades of expertise, has been instrumental in expanding the company's global footprint in furniture manufacturing, exports, and interiors. His keen business acumen and deep understanding of craftsmanship have helped Samurai Group establish itself as a trusted name in luxury interiors and high-quality furniture solutions.
- Mr. Duksh Goel, a young man with a dynamic and modern perspective, is playing a pivotal role in driving the company's real estate division forward. His focus on premium residential and commercial developments, combined with a vision for creating world-class living spaces, has positioned Samurai Realty as an emerging leader in the luxury real estate segment.

Together, their leadership has shaped Samurai Group into a brand synonymous with trust, innovation and excellence.

Our Evolution: From Trading to Transforming Spaces

From a modest beginning in furniture trading, Samurai Group soon expanded into manufacturing by setting up its own production units to cater to both Indian and global markets. As India's economy opened up in the early 1990s post liberalisation, the Group recognised the immense potential of real estate, leading to the acquisition of prime land parcels across Rajasthan.

Over the years, Samurai Group has successfully developed, sold and leased over 1.5 million sq. ft. of commercial space, including showrooms, office buildings and warehouses, building a strong reputation for quality, precision and reliability.

By 2015, the Group ventured into residential real estate, introducing premium plotted developments and high-end residential schemes. These projects were thoughtfully designed, blending luxury, comfort and modern aesthetics, thereby reinforcing Samurai Group's commitment to creating spaces that elevate lifestyles.

A Powerhouse in Interiors & Retail

As India became the second-largest manufacturer of furniture, Samurai Group scaled its production capacity and diversified into interior solutions. Today, the company is a one-stop destination for luxury interiors, catering to high-end residences, hotels and commercial spaces, with over 1,000 successfully completed interior projects.

Taking forward its commitment to design and craftsmanship, Samurai Group expanded into retail with Samurai Home stores in multiple cities. These stores offer a curated selection of one-of-a-kind, handcrafted furniture and décor pieces, allowing customers to bring home the timeless elegance and bespoke quality the brand is known for.

The Next Chapter: A Landmark Residential Project – Jewel by Samurai

Now, Samurai Group is amalgamating its four decades of experience, industry expertise and strong brand legacy to launch its most ambitious project yet – Jewel by Samurai. Spanning over 4,50,000 sq. ft., this high-end residential development is set to redefine luxury living in Jaipur. Designed to set new benchmarks in elegance, personalisation and architectural excellence, Jewel by Samurai offers a harmonious blend of modern sophistication, premium amenities and unique design elements, making it a distinctive landmark in the city's skyline.

Shaping the Future of Luxury Living

Under the visionary leadership of Mr. Tarun Goel and Mr. Duksh Goel, Samurai Group continues to redefine the landscape of luxury real estate, interiors and home design. As we look ahead, our mission remains unchanged – to craft extraordinary spaces that are not just homes but expressions of comfort, elegance and timeless luxury.

With Samurai Group, you don't just invest in property – you invest in an exclusive way of living for the future.

Foundation Stones of



BUILT ON OUR OWN LAND

The Jewel is built on the JDA allotted land thus ensures stringent law enforcement and timely delivery

APPROVED BY ALL CONCERNED AUTHORITIES

The Jewel has approvals from all competent authorities like JDA and RERA

COMMITTED TO ON-TIME DELIVERY

We respect time and understand the value of home that's why we are committed to delivering your key on committed time

TRANSPARENT DEALING

We are committed to deliver the best value for your investment that's why every detail of your home is properly documented

RESPONSIBLE DEVELOPMENT

The Jewel is a pre certified green building because we believe in responsible development

EASE OF PAYMENT

The Jewel offers easy and flexible payment plans so that you can own your dream home without any hassles

Principle Architect



Studio Saarth is a group of professionals with several years of collective experience in the field of architecture. Our practice is driven by deep research, local knowledge and efficient teamwork. As professionals, we aim to create world class design solutions with deep social and cultural understanding of the communities/clients we design for.

*As an architect/urban designer, the city is our canvas and as its creator it is our duty to enhance its beauty by creating a safe, thoughtful and nurturing spaces.
Ar. Dr. Puneet Dua (Founder)

Landscape Consultant



MEP Consultant



the heart of your building

