



CHANDAK

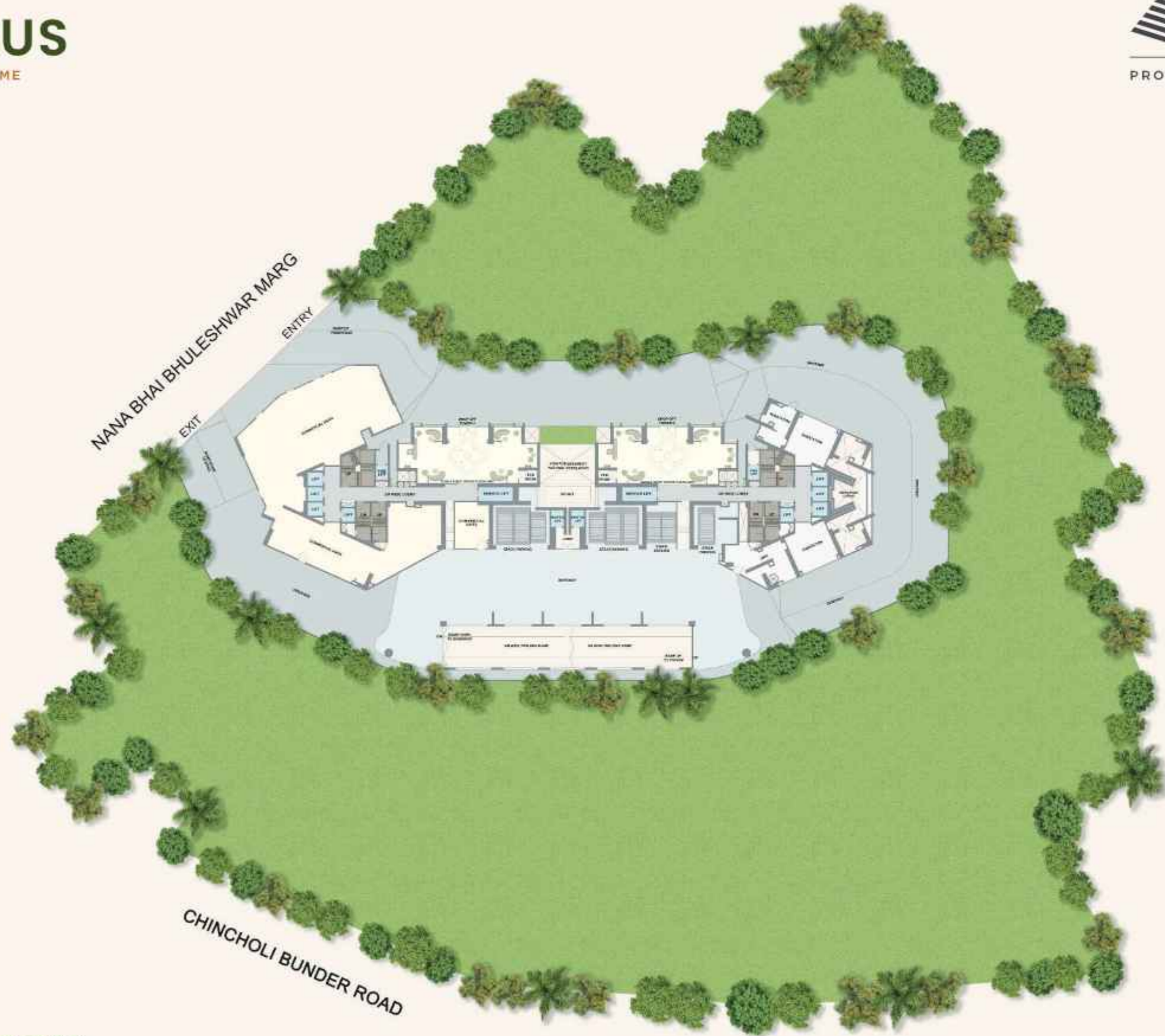
PROMISES MADE. PROMISES KEPT.

CHANDAK TREESOURUS

WHERE NATURE COMES HOME

TOWER 2 - FLOOR PLANS





GROUND FLOOR

Disclaimer- Project is registered as 'Chandak Treesourus' on the Maharashtra bearing Maharashtra Registration No. P51800048658. Available on: <https://maharera.mahaonline.gov.in>. This communication is purely conceptual and not a legal offering, the information contained herein is only indicative in nature. The project amenities, facilities and as per the plans approved/to be approved by the concerned authority. All furniture, fixtures, features, interior design and other arrangements/facilities as depicted above (save and except expressly agreed to be provided) are not part of the standard offering and are purely illustrative. List of standard offerings, amenities and other details are available for verification at the project site. Intending purchasers are requested to verify all the details before acting in any manner with respect to the project. The Project is financed by ICICI Bank Limited.



PLAN NOT TO SCALE



MAHARERA QR CODE

GROUND FLOOR



Disclaimer- Project is registered as 'Chandak Treesourus' on the Maharashtra bearing Maharashtra Registration No. P51800048658. Available on: <https://maharera.mahaonline.gov.in>. This communication is purely conceptual and not a legal offering, the information contained herein is only indicative in nature. The project amenities, facilities and as per the plans approved/to be approved by the concerned authority. All furniture, fixtures, features, interior design and other arrangements/facilities as depicted above (save and except expressly agreed to be provided) are not part of the standard offering and are purely illustrative. List of standard offerings, amenities and other details are available for verification at the project site. Intending purchasers are requested to verify all the details before acting in any manner with respect to the project. The Project is financed by ICICI Bank Limited.



MAHARERA QR CODE

PODIUM 2ND TO 6TH & 8TH



TOWER 2						
FLAT NO.	1	2	3	4	5	6
RERA CARPET AREA	689 sq. ft.	682 sq. ft.	682 sq. ft.	689 sq. ft.	672 sq. ft.	668 sq. ft.
ADDITIONAL AREA	55 sq. ft.	56 sq. ft.	56 sq. ft.	55 sq. ft.	50 sq. ft.	50 sq. ft.
TOTAL AREA	744 sq. ft.	738 sq. ft.	738 sq. ft.	744 sq. ft.	722 sq. ft.	718 sq. ft.



PLAN NOT TO SCALE



MAHAREGISTRATION QR CODE

Disclaimer- Project is registered as 'Chandak Treesourus' on the Maharegistration bearing Maharegistration Registration No. P51800048658. Available on: <https://maharegistration.mahaonline.gov.in>. This communication is purely conceptual and not a legal offering, the information contained herein is only indicative in nature. The areas and dimensions mentioned above are as per the plans approved/to be approved by the concerned authority and the same are subject to construction exigencies and variations. The furniture, fixtures, features, interior design and other arrangements/facilities as depicted above (save and except expressly agreed to be provided) are not part of the standard offering and are purely illustrative. List of standard offerings, amenities, facilities and other details are available for verification at the Project site. Intending purchasers are requested to verify all the details before acting in any manner with respect to project. The Project is financed by ICICI Bank Limited.

REFUGE PLAN - 7TH FLOOR



TOWER 2				
FLAT NO.	1	2	3	4
RERA CARPET AREA	689 sq.ft.	682 sq.ft.	682 sq.ft.	689 sq.ft.
ADDITIONAL AREA	55 sq.ft.	56 sq.ft.	56 sq.ft.	55 sq.ft.
TOTAL AREA	744 sq.ft.	738 sq.ft.	738 sq.ft.	744 sq.ft.



PLAN NOT TO SCALE



MAHAREGISTRATION QR CODE

Disclaimer- Project is registered as 'Chandak Treasures' on the Maharegistration bearing Maharegistration Registration No. P51800048658. Available on: <https://maharegistration.mahaonline.gov.in>. This communication is purely conceptual and not a legal offering, the information contained herein is only indicative in nature. The areas and dimensions mentioned above are as per the plans approved/to be approved by the concerned authority and the same are subject to construction exigencies and variations. The furniture, fixtures, features, interior design and other arrangements, facilities as depicted above (save and except expressly agreed to be provided) are not part of the standard offering and are purely illustrative. List of standard offerings, amenities, facilities and other details are available for verification at the Project site. Intending purchasers are requested to verify all the details before acting in any manner with respect to project. The Project is financed by ICICI Bank Limited.

PODIUM - 9TH & 10TH FLOOR



TOWER 2						
FLAT NO.	1	2	3	4	5	6
RERA CARPET AREA	689 sq.ft.	682 sq.ft.	682 sq.ft.	689 sq.ft.	672 sq.ft.	668 sq.ft.
ADDITIONAL AREA	55 sq.ft.	56 sq.ft.	56 sq.ft.	55 sq.ft.	50 sq.ft.	50 sq.ft.
TOTAL AREA	744 sq.ft.	738 sq.ft.	738 sq.ft.	744 sq.ft.	722 sq.ft.	718 sq.ft.

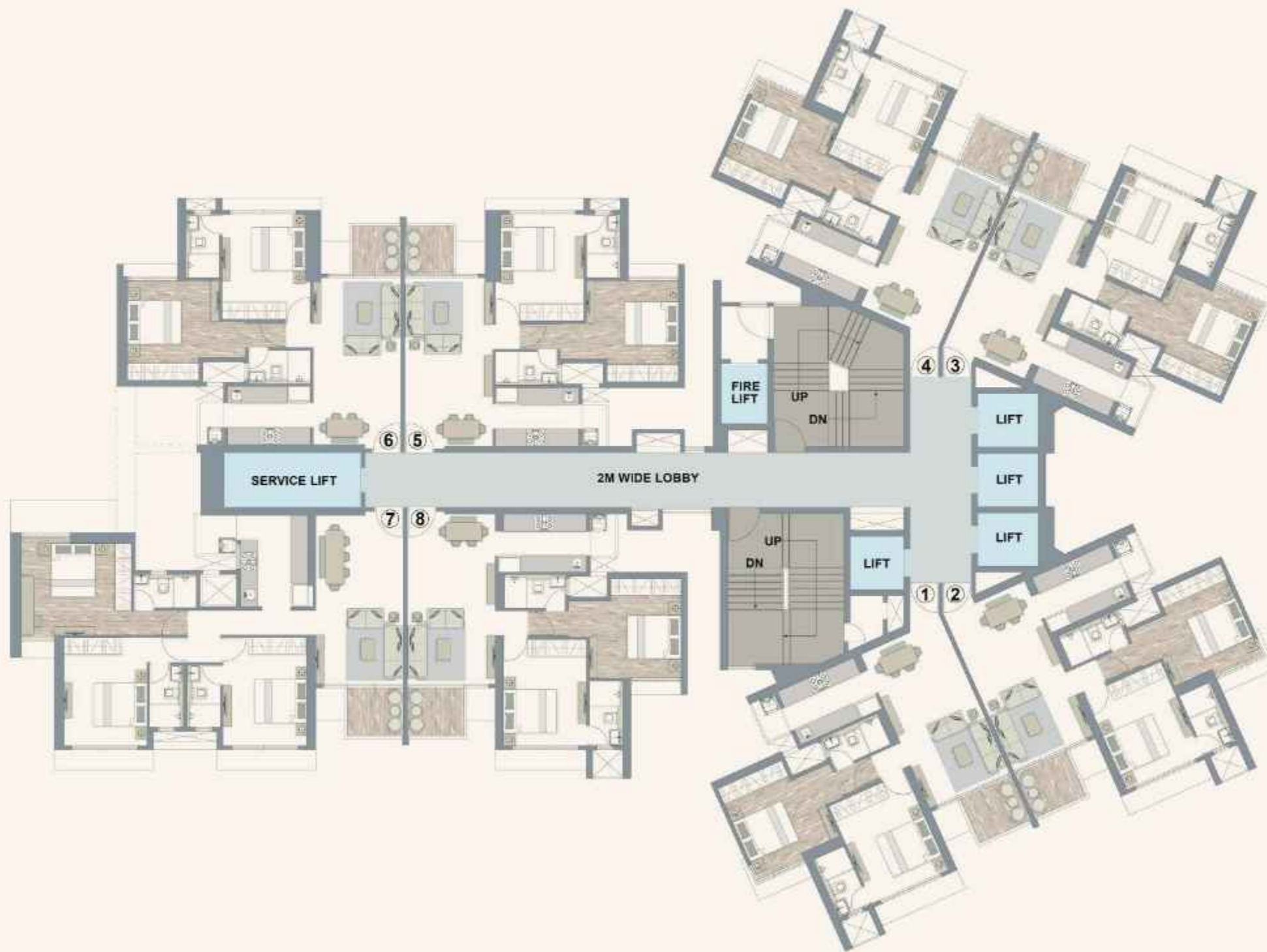


PLAN NOT TO SCALE



MAHARERA QR CODE

Disclaimer- Project is registered as 'Chandak Treasourus' on the Mahareera bearing Mahareera Registration No. P51800048658. Available on: <https://mahareera.mahaonline.gov.in>. This communication is purely conceptual and not a legal offering, the information contained herein is only indicative in nature. The areas and dimensions mentioned above are as per the plans approved/to be approved by the concerned authority and the same are subject to construction exigencies and variations. The furniture, fixtures, features, interior design and other arrangements/facilities as depicted above (save and except expressly agreed to be provided) are not part of the standard offering and are purely illustrative. List of standard offerings, amenities, facilities and other details are available for verification at the Project site. Intending purchasers are requested to verify all the details before acting in any manner with respect to project. The Project is financed by ICICI Bank Limited.



TYPICAL PLAN TOWER - 2

FLAT NO.	RERA CARPET AREA	ADDITIONAL AREA	TOTAL AREA
1	689 sq.ft.	55 sq.ft.	744 sq.ft.
2	682 sq.ft.	56 sq.ft.	738 sq.ft.
3	682 sq.ft.	56 sq.ft.	738 sq.ft.
4	689 sq.ft.	55 sq.ft.	744 sq.ft.
5	672 sq.ft.	50 sq.ft.	722 sq.ft.
6	668 sq.ft.	50 sq.ft.	718 sq.ft.
7	955 sq.ft.	64 sq.ft.	1019 sq.ft.
8	676 sq.ft.	55 sq.ft.	731 sq.ft.



PLAN NOT TO SCALE



MAHAREERA QR CODE

Chandak Treesourous MahaRERA Project Registration No. P51800048658 Available on <https://maharera.mahaonline.gov.in>

Note - The floor plan layout is in respect of 2nd to 45th habitable floors. The furniture, fixtures, interior work, design options and fittings as displayed in this communication are artistic impressions used for indicative purposes only and not part of the standard offerings to be provided in the premises. The areas and dimensions shown, if any, are as per the plans approved by the concerned authority and the same are subject to construction exigencies and variations. Intending purchasers are requested to verify all the details before acting in any manner with respect to the project. Project financed by ICICI Bank Limited.

REFUGE PLAN - TYPICAL 14TH 21ST, 28TH, 35TH FLOOR



TOWER 2						
FLAT NO.	1	2	3	4	7	8
RERA CARPET AREA	689 sq.ft.	662 sq.ft.	682 sq.ft.	689 sq.ft.	955 sq.ft.	676 sq.ft.
ADDITIONAL AREA	55 sq.ft.	56 sq.ft.	56 sq.ft.	55 sq.ft.	64 sq.ft.	55 sq.ft.
TOTAL AREA	744 sq.ft.	738 sq.ft.	738 sq.ft.	744 sq.ft.	1019 sq.ft.	731 sq.ft.



PLAN NOT TO SCALE



MAHARERA QR CODE

Disclaimer- Project is registered as 'Chandak Treesourus' on the Mahareera bearing Mahareera Registration No. P51800048658. Available on: <https://mahareera.mahaonline.gov.in>. This communication is purely conceptual and not a legal offering, the information contained herein is only indicative in nature. The areas and dimensions mentioned above are as per the plans approved/to be approved by the concerned authority and the same are subject to construction exigencies and variations. The furniture, fixtures, features, interior design and other arrangements/facilities as depicted above (save and except expressly agreed to be provided) are not part of the standard offering and are purely illustrative. List of standard offerings, amenities, facilities and other details are available for verification at the Project site. Intending purchasers are requested to verify all the details before acting in any manner with respect to project. The Project is financed by ICICI Bank Limited.

AMENITY FLOOR



PLAN NOT TO SCALE



MAHARERA QR CODE

Disclaimer- Project is registered as 'Chandak Treesourus' on the MaharERA bearing MaharERA Registration No. P51800048658. Available on: <https://maharera.mahaonline.gov.in>. This communication is purely conceptual and not a legal offering, the information contained herein is only indicative in nature. The project amenities, facilities and as per the plans approved/to be approved by the concerned authority. All furniture, fixtures, features, interior design and other arrangements/facilities as depicted above (save and except expressly agreed to be provided) are not part of the standard offering and are purely illustrative. List of standard offerings, amenities and other details are available for verification at the project site. Intending purchasers are requested to verify all the details before acting in any manner with respect to the project. The Project is financed by ICICI Bank Limited.

TERRACE PLAN



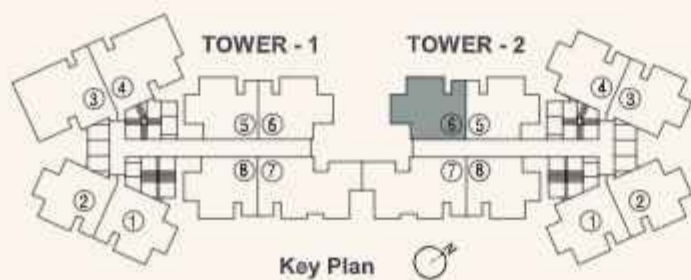
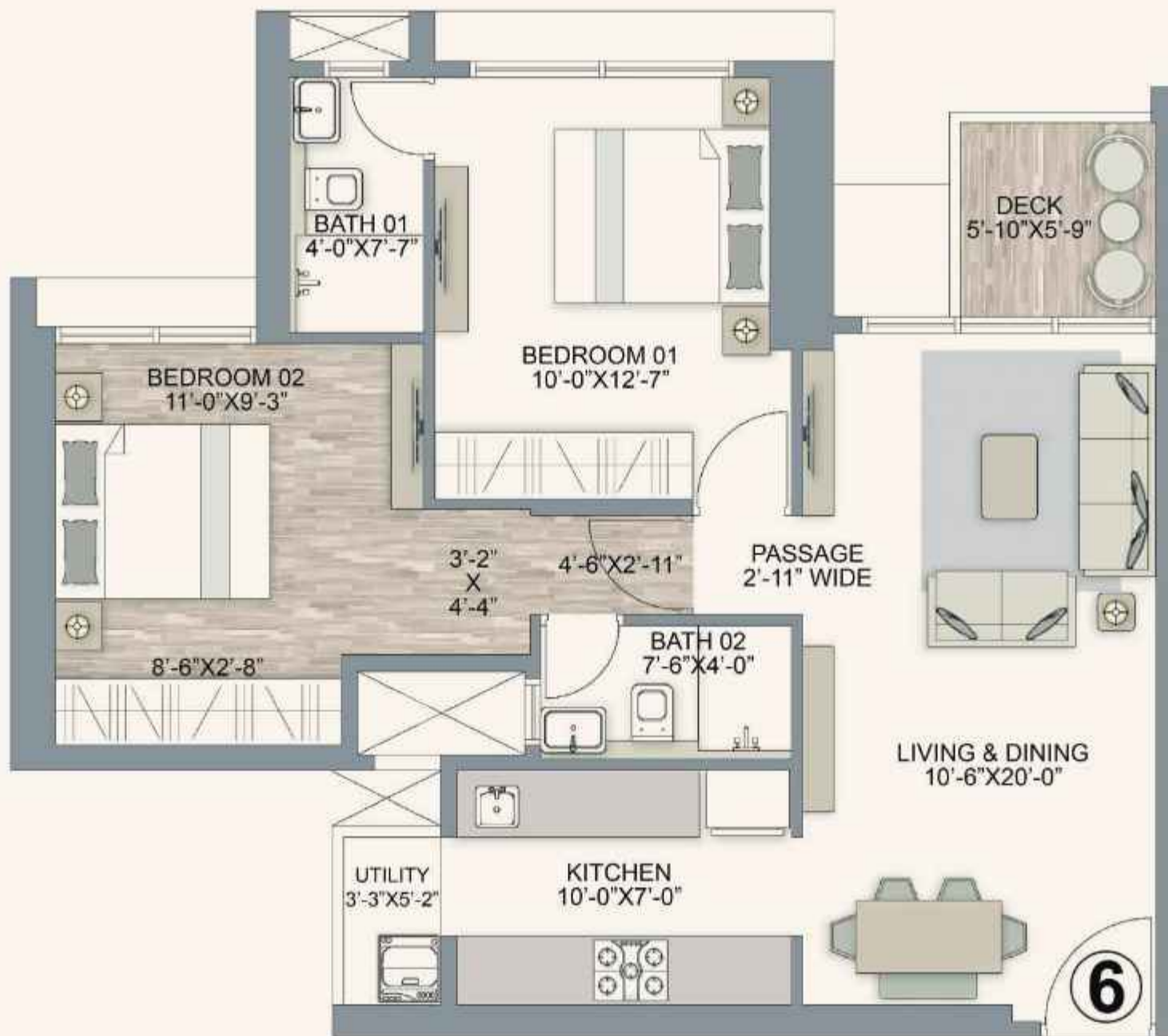
PLAN NOT TO SCALE

Disclaimer- Project is registered as 'Chandak Treesourus' on the MahaRERA bearing MahaRERA Registration No. P51800048658. Available on: <https://maharera.mahaonline.gov.in>. This communication is purely conceptual and not a legal offering, the information contained herein is only indicative in nature. All the designs, nomenclature, renders, facilities and visuals are only artistic impressions and are used for indicative purposes only and the same are subject to amendments and modifications. The project amenities and facilities are as per the plans approved/to be approved by the concerned authority. All furniture, fixtures, features, interior design and other arrangements/materials/facilities as depicted above (save and except expressly agreed to be provided) are not part of the standard offering and are purely illustrative. List of standard offerings, amenities and other details are available for verification at the project site. Intending purchasers are requested to verify all the details before acting in any manner with respect to the project. The Project is financed by ICICI Bank Limited.



MAHARERA QR CODE

2 BHK - 718 SQ.FT.*



RERA CARPET AREA	ADDITIONAL AREA	TOTAL AREA
SQ.FT	SQ.FT	SQ.FT
668	50	718



Plan Not To Scale

*T&C Applied

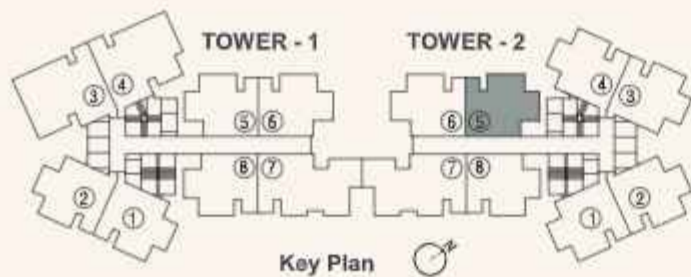
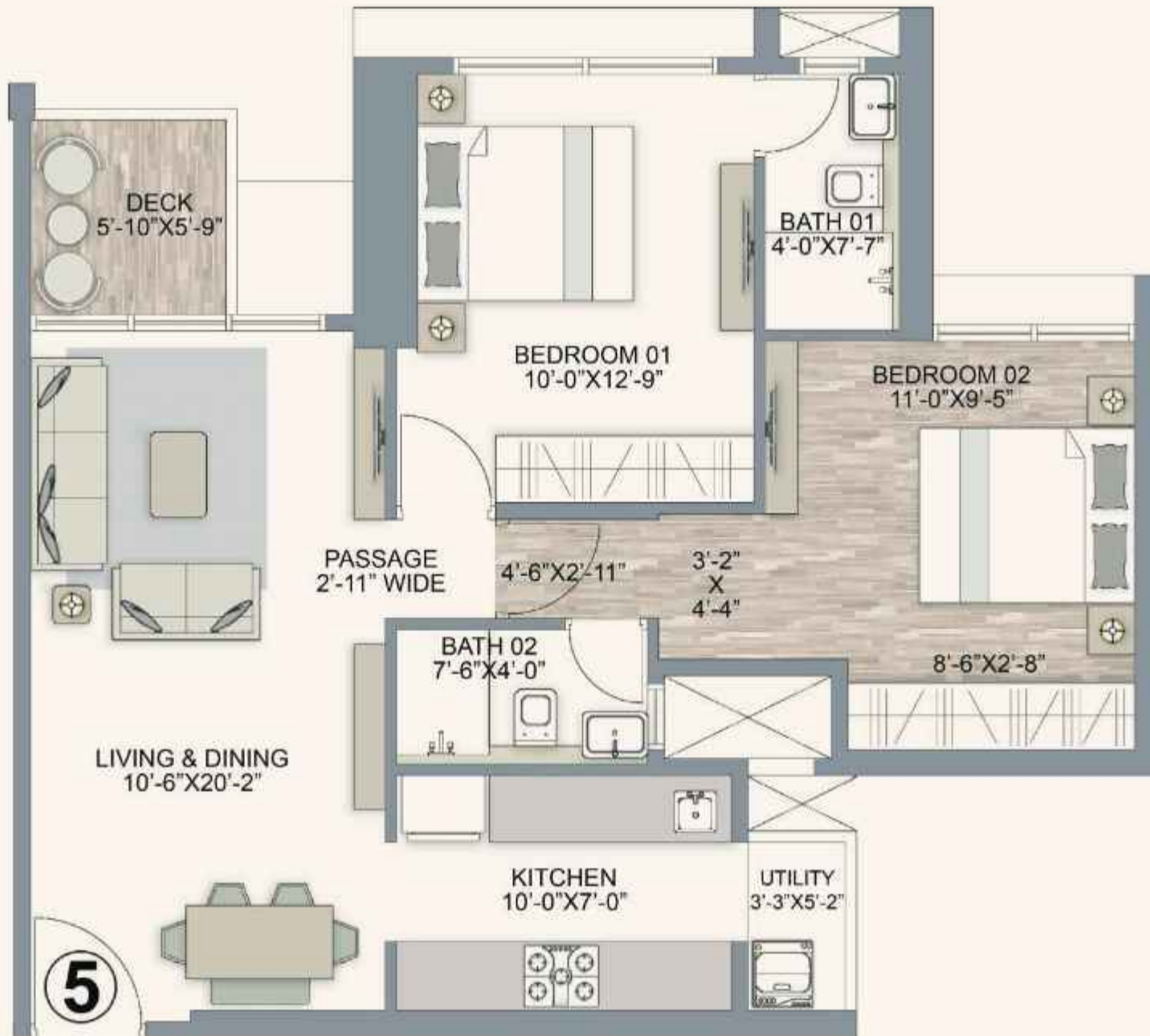
Chandak Treesourous MahaRERA Project Registration No. P51800048658 Available on <https://maharera.mahaonline.gov.in>

Note - The floor plan layout is in respect of 2nd to 45th habitable floors. The furniture, fixtures, interior work, design options and fittings as displayed in this communication are artistic impressions used for indicative purposes only and not part of the standard offerings to be provided in the premises. The areas and dimensions shown, if any, are as per the plans approved by the concerned authority and the same are subject to construction exigencies and variations. Intending purchasers are requested to verify all the details before acting in any manner with respect to the project. Project financed by ICICI Bank Limited.



MAHARERA QR CODE

2 BHK - 722 SQ.FT.*



RERA CARPET AREA	ADDITIONAL AREA	TOTAL AREA
SQ.FT	SQ.FT	SQ.FT
672	50	722



Plan Not To Scale

*T&C Applied

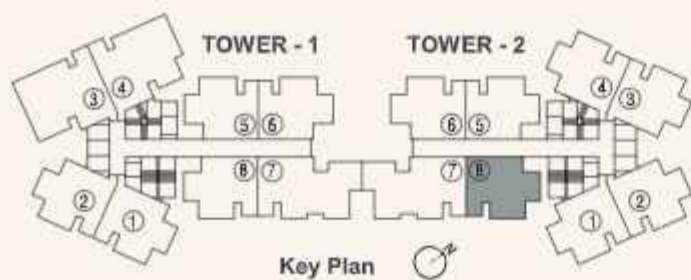
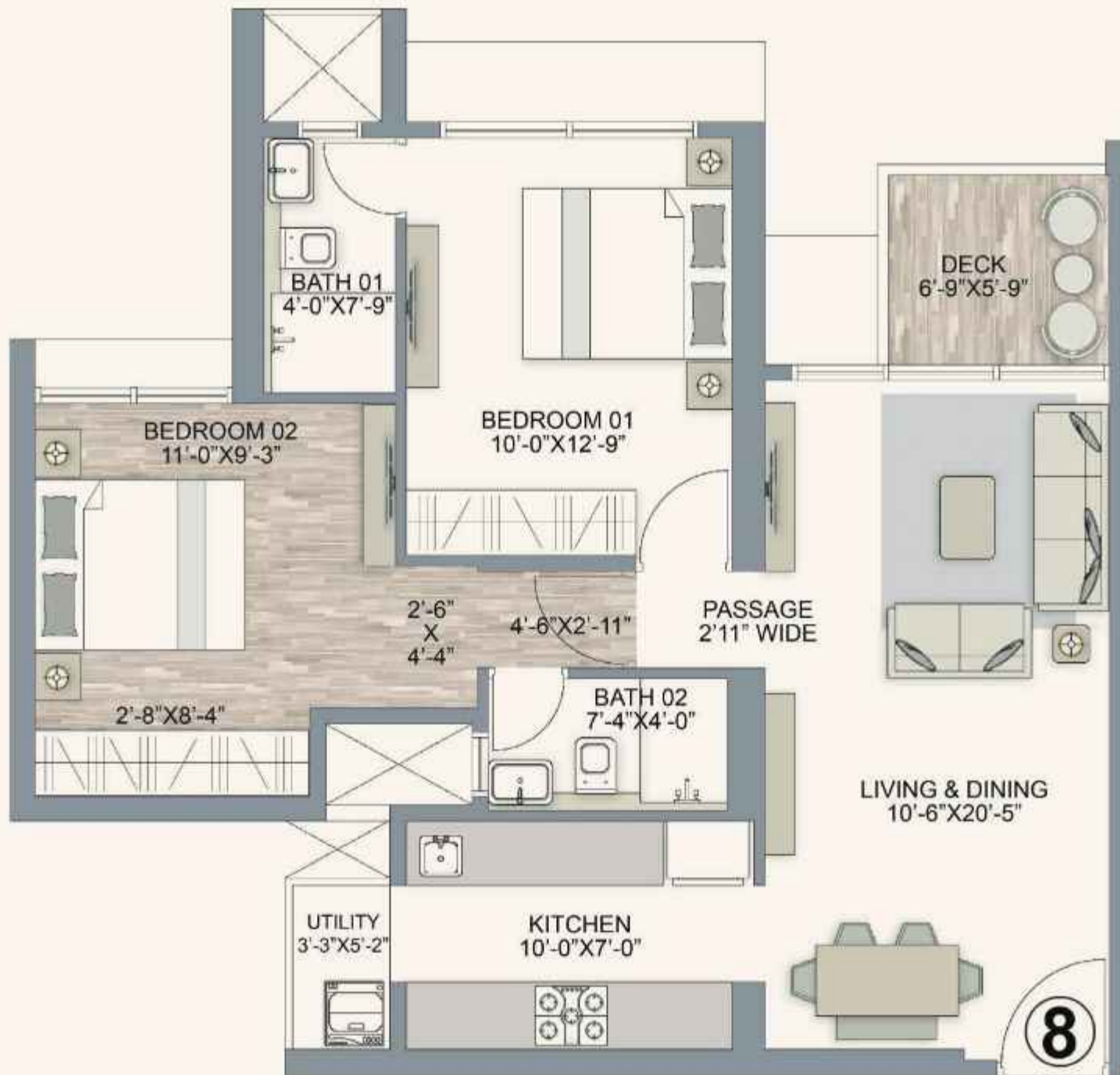
Chandak Treesourous MahaRERA Project Registration No. P51800048658 Available on <https://maharera.mahaonline.gov.in>

Note - The floor plan layout is in respect of 2nd to 45th habitable floors. The furniture, fixtures, interior work, design options and fittings as displayed in this communication are artistic impressions used for indicative purposes only and not part of the standard offerings to be provided in the premises. The areas and dimensions shown, if any, are as per the plans approved by the concerned authority and the same are subject to construction exigencies and variations. Intending purchasers are requested to verify all the details before acting in any manner with respect to the project. Project financed by ICICI Bank Limited.



MAHARERA QR CODE

2 BHK - 731 SQ.FT.*



RERA CARPET AREA	ADDITIONAL AREA	TOTAL AREA
SQ.FT	SQ.FT	SQ.FT
676	55	731



T&C Applied

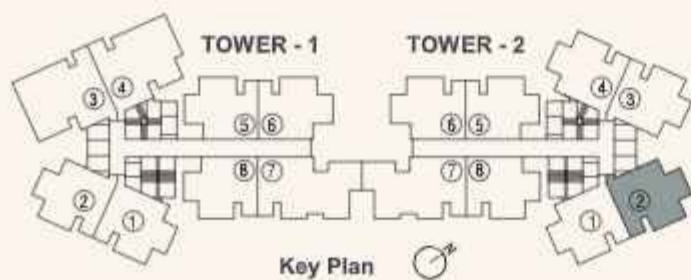
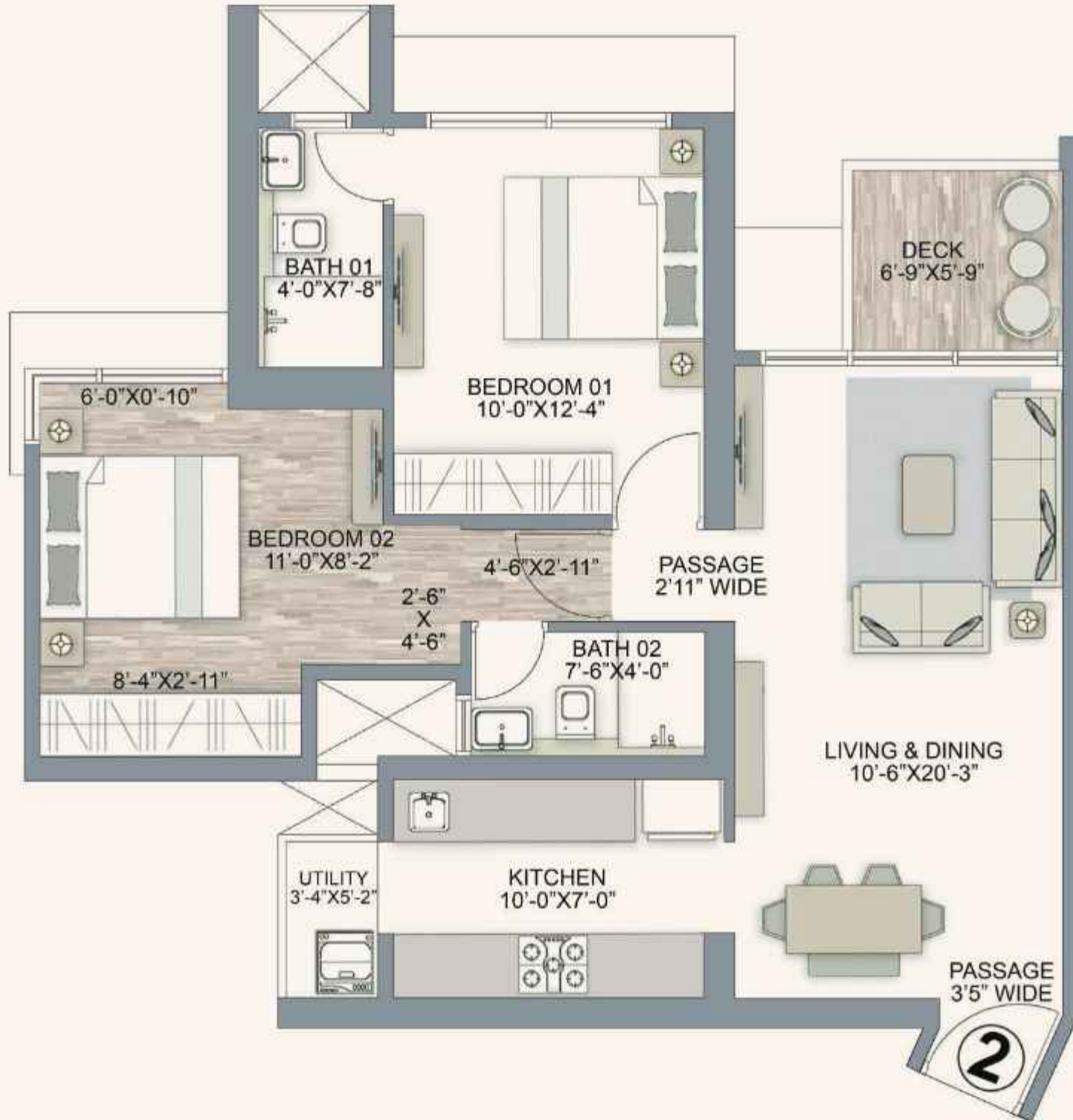
Chandak Treesourous MahaRERA Project Registration No. P51800048658 Available on <https://maharera.mahaonline.gov.in>

Note - The floor plan layout is in respect of 2nd to 45th habitable floors. The furniture, fixtures, interior work, design options and fittings as displayed in this communication are artistic impressions used for indicative purposes only and not part of the standard offerings to be provided in the premises. The areas and dimensions shown, if any, are as per the plans approved by the concerned authority and the same are subject to construction exigencies and variations. Intending purchasers are requested to verify all the details before acting in any manner with respect to the project. Project financed by ICICI Bank Limited.



MAHARERA QR CODE

2 BHK - 738 SQ.FT.*



RERA CARPET AREA	ADDITIONAL AREA	TOTAL AREA
SQ.FT	SQ.FT	SQ.FT
682	56	738



*T&C Applied

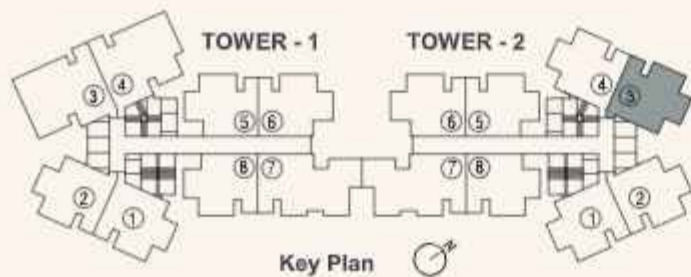
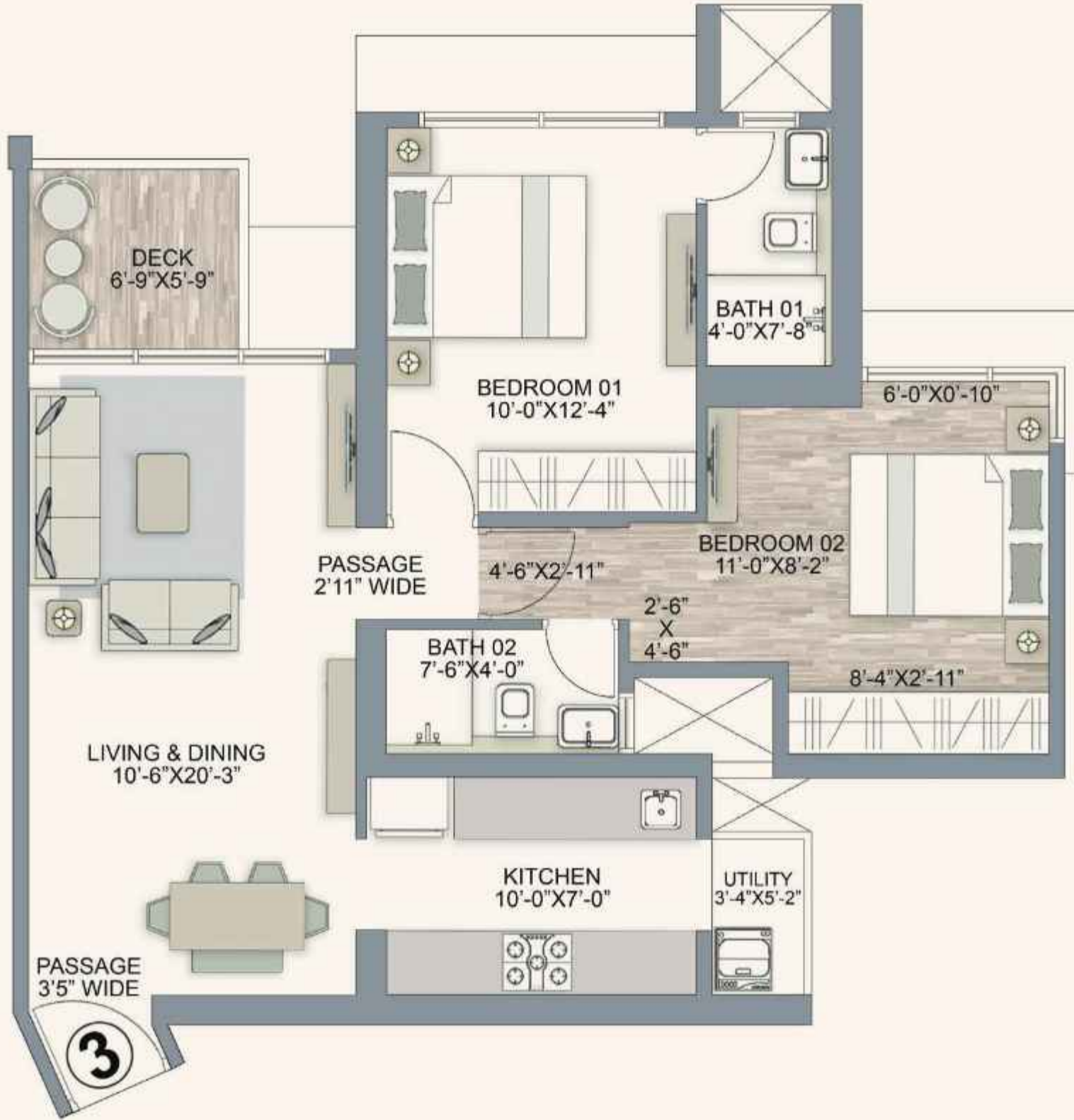
Chandak Treesourous MahaRERA Project Registration No. P51800048658 Available on <https://maharera.mahaonline.gov.in>

Note - The floor plan layout is in respect of 2nd to 45th habitable floors. The furniture, fixtures, interior work, design options and fittings as displayed in this communication are artistic impressions used for indicative purposes only and not part of the standard offerings to be provided in the premises. The areas and dimensions shown, if any, are as per the plans approved by the concerned authority and the same are subject to construction exigencies and variations. Intending purchasers are requested to verify all the details before acting in any manner with respect to the project. Project financed by ICICI Bank Limited.



MAHARERA QR CODE

2 BHK - 738 SQ.FT.*



RERA CARPET AREA	ADDITIONAL AREA	TOTAL AREA
SQ.FT	SQ.FT	SQ.FT
682	56	738



*T&C Applied

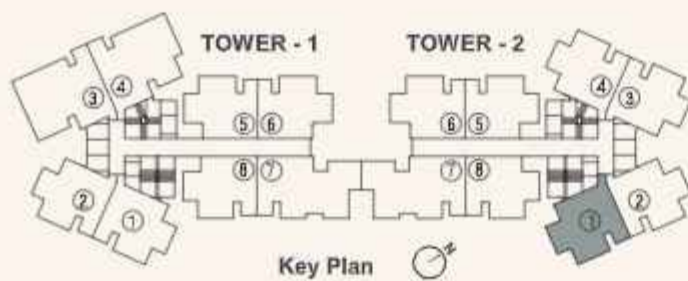
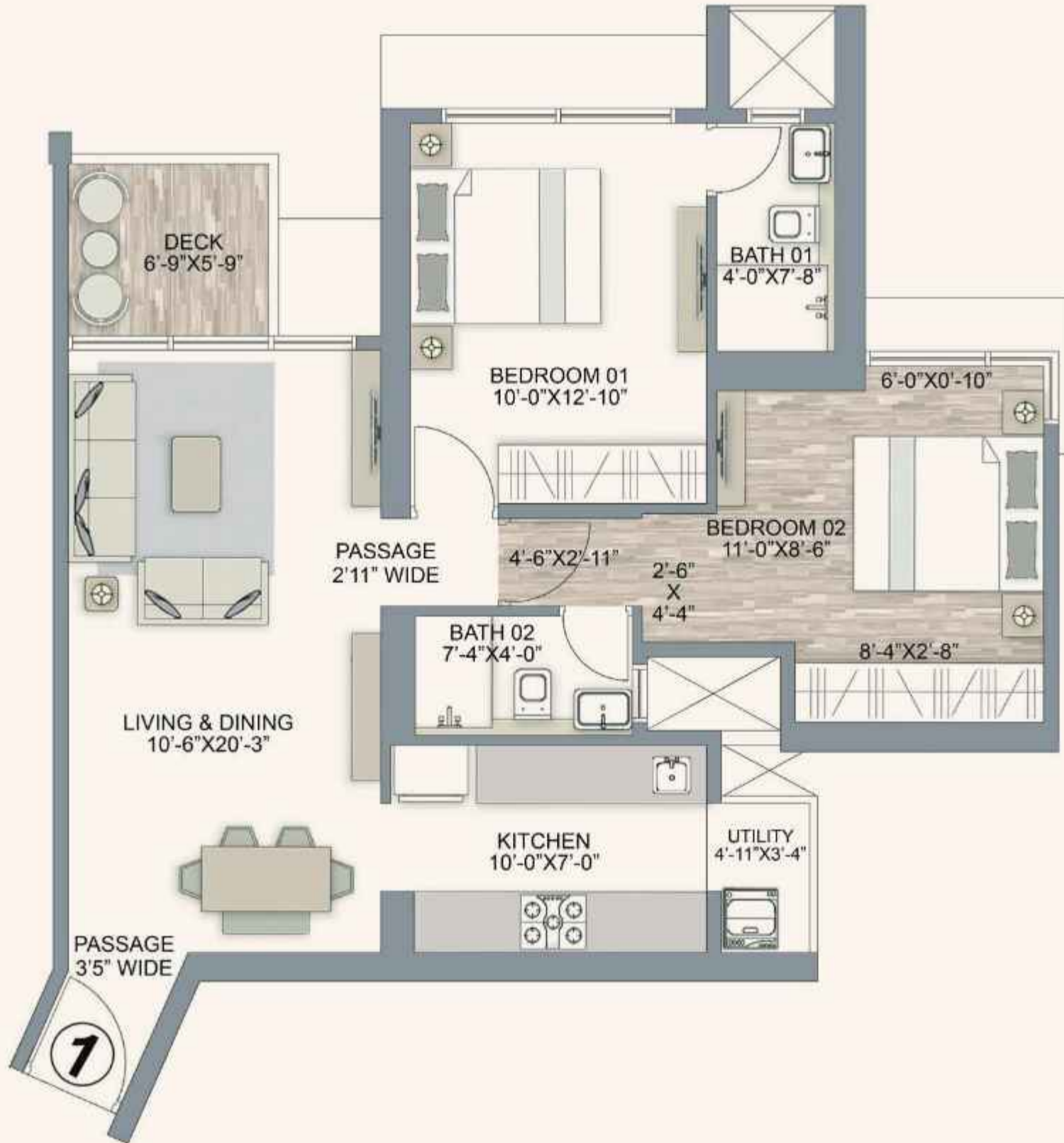
Chandak Treesourous MahaRERA Project Registration No. P51800048658 Available on <https://maharera.mahaonline.gov.in>

Note - The floor plan layout is in respect of 2nd to 45th habitable floors. The furniture, fixtures, interior work, design options and fittings as displayed in this communication are artistic impressions used for indicative purposes only and not part of the standard offerings to be provided in the premises. The areas and dimensions shown, if any, are as per the plans approved by the concerned authority and the same are subject to construction exigencies and variations. Intending purchasers are requested to verify all the details before acting in any manner with respect to the project. Project financed by ICICI Bank Limited.



MAHARERA QR CODE

2 BHK - 744 SQ.FT.*



RERA CARPET AREA	ADDITIONAL AREA	TOTAL AREA
SQ.FT	SQ.FT	SQ.FT
689	55	744



T&C Applied

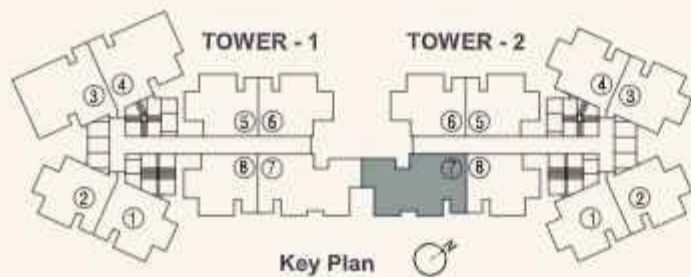
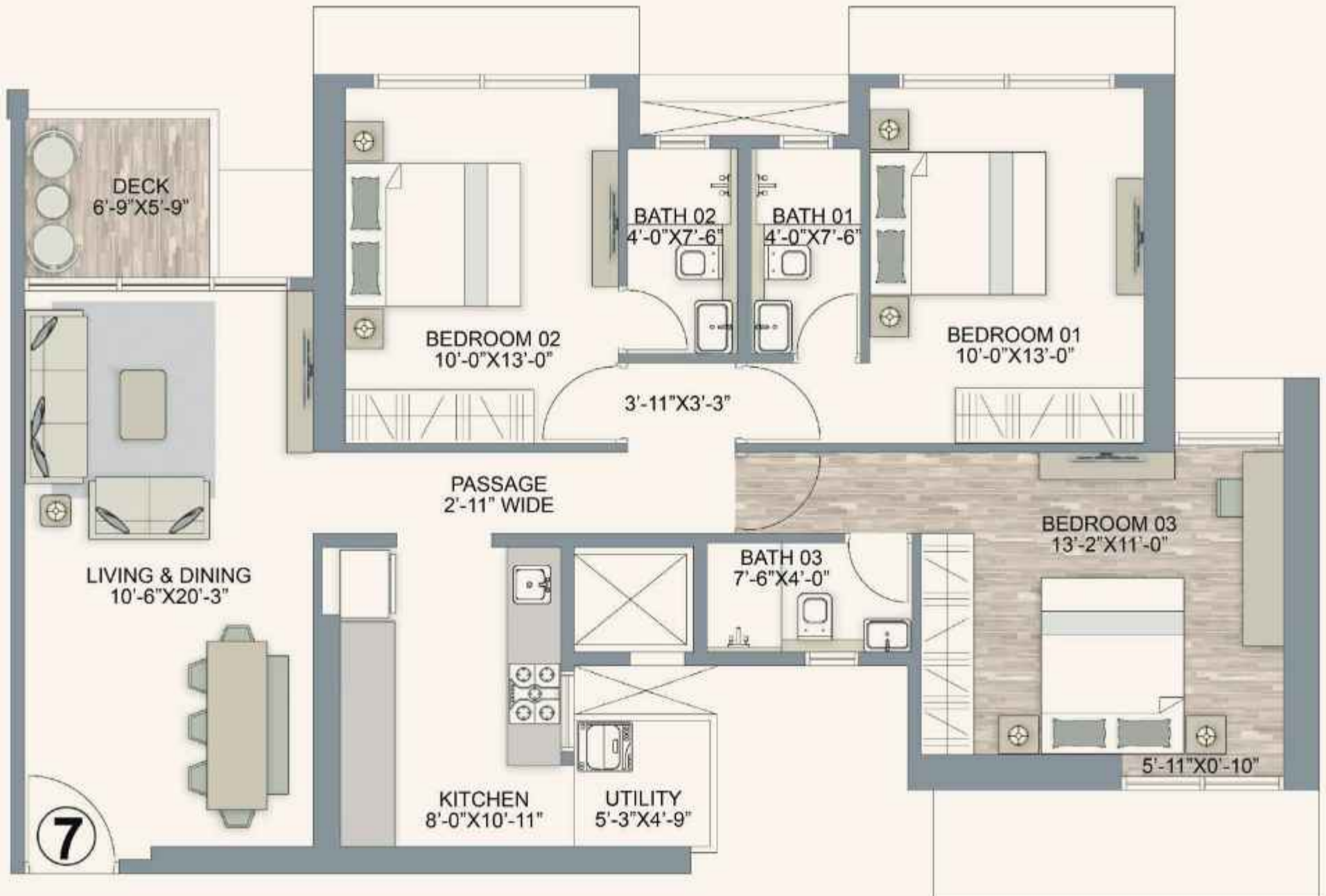
Chandak Treesourous MahaRERA Project Registration No. P51800048658 Available on <https://maharera.mahaonline.gov.in>

Note - The floor plan layout is in respect of 2nd to 45th habitable floors. The furniture, fixtures, interior work, design options and fittings as displayed in this communication are artistic impressions used for indicative purposes only and not part of the standard offerings to be provided in the premises. The areas and dimensions shown, if any, are as per the plans approved by the concerned authority and the same are subject to construction exigencies and variations. Intending purchasers are requested to verify all the details before acting in any manner with respect to the project. Project financed by ICICI Bank Limited.



MAHARERA QR CODE

3 BHK - 1019 SQ.FT.*



RERA CARPET AREA	ADDITIONAL AREA	TOTAL AREA
SQ.FT	SQ.FT	SQ.FT
955	64	1019



T&C Applied

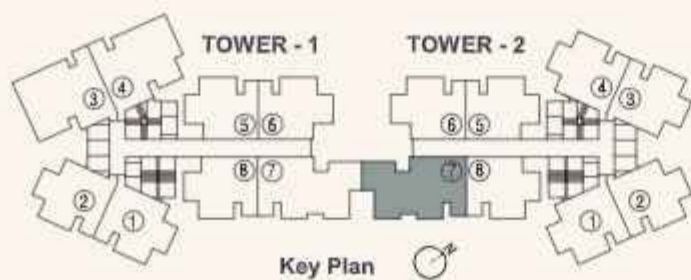
Chandak Treesourous MahaRERA Project Registration No. P51800048658 Available on <https://maharera.mahaonline.gov.in>

Note - The floor plan layout is in respect of 2nd to 45th habitable floors. The furniture, fixtures, interior work, design options and fittings as displayed in this communication are artistic impressions used for indicative purposes only and not part of the standard offerings to be provided in the premises. The areas and dimensions shown, if any, are as per the plans approved by the concerned authority and the same are subject to construction exigencies and variations. Intending purchasers are requested to verify all the details before acting in any manner with respect to the project. Project financed by ICICI Bank Limited.



MAHARERA QR CODE

3 BHK - 1019 SQ.FT.*



RERA CARPET AREA	ADDITIONAL AREA	TOTAL AREA
SQ.FT	SQ.FT	SQ.FT
955	64	1019



T&C Applied

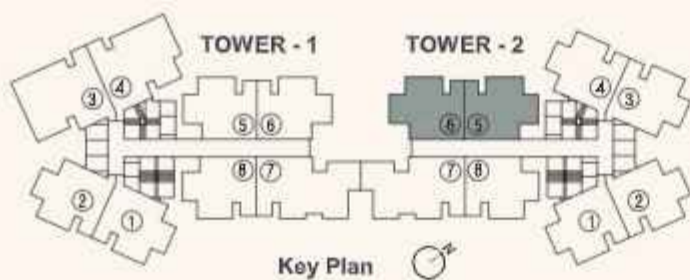
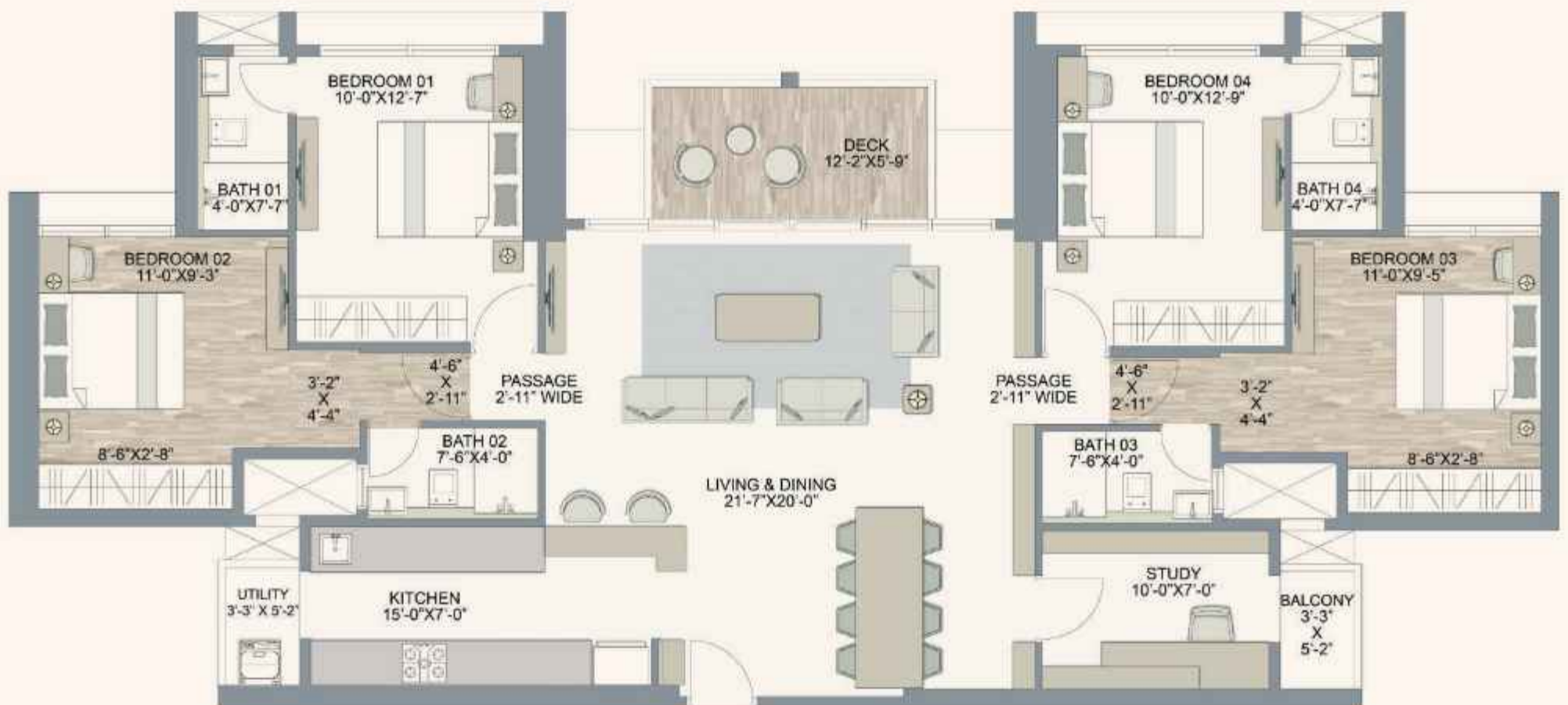
Chandak Treesourous MahaRERA Project Registration No. P51800048658 Available on <https://maharera.mahaonline.gov.in>

Note - The floor plan layout is in respect of 2nd to 45th habitable floors. The furniture, fixtures, interior work, design options and fittings as displayed in this communication are artistic impressions used for indicative purposes only and not part of the standard offerings to be provided in the premises. The areas and dimensions shown, if any, are as per the plans approved by the concerned authority and the same are subject to construction exigencies and variations. Intending purchasers are requested to verify all the details before acting in any manner with respect to the project. Project financed by ICICI Bank Limited.



MAHARERA QR CODE

2+2 JODI - 1451 SQ.FT.*
FURNITURE OPTION - 01



RERA CARPET AREA	ADDITIONAL AREA	TOTAL AREA
SQ.FT	SQ.FT	SQ.FT
1348	103	1451



Plan Not To Scale

*T&C Applied

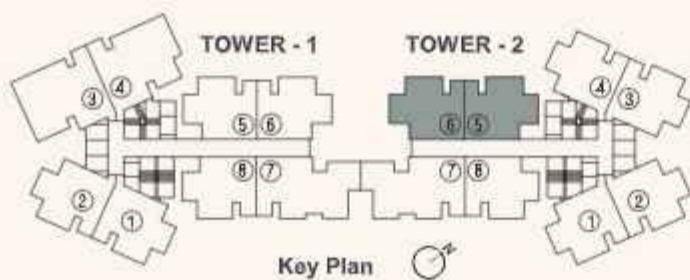
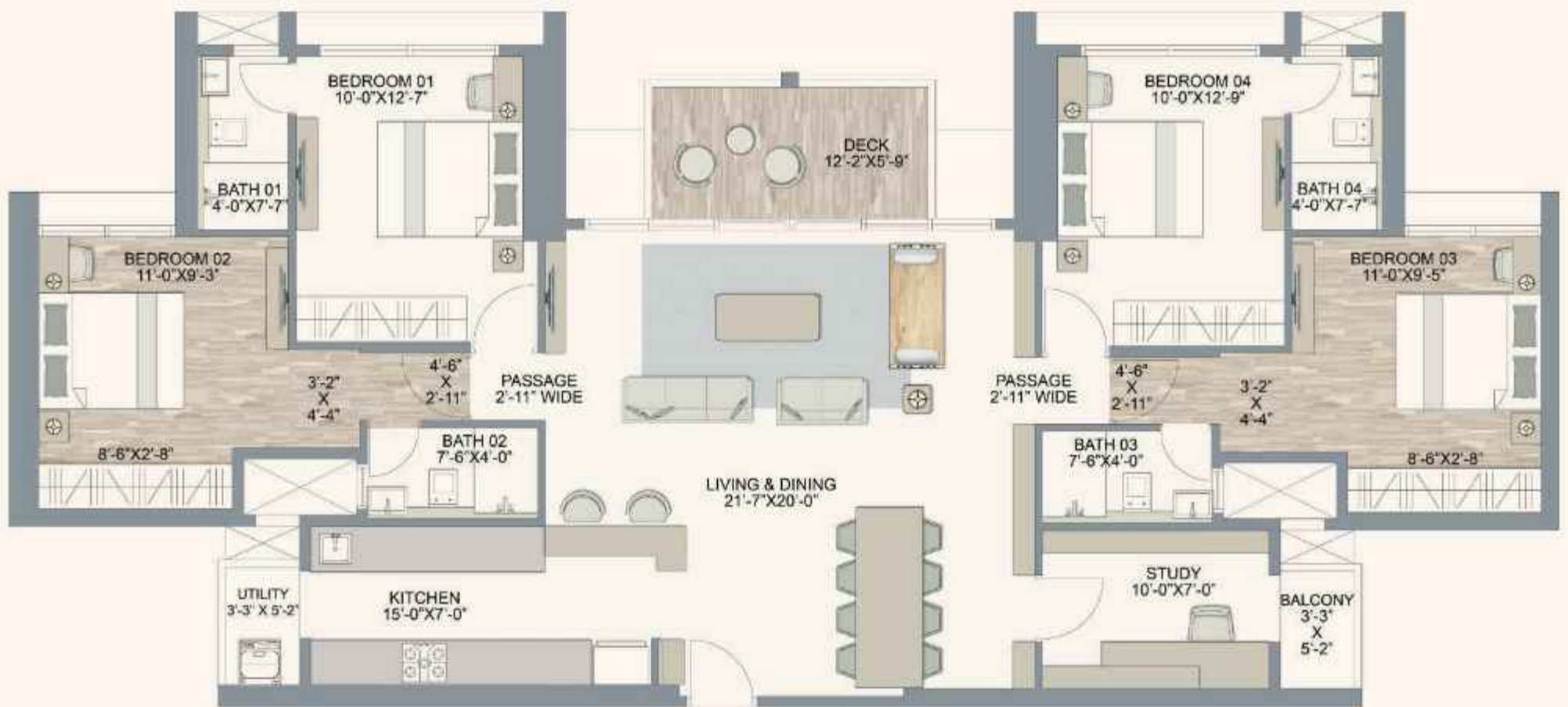
Chandak Treesourous MahaRERA Project Registration No. P51800048658 Available on <https://maharera.mahaonline.gov.in>

Note - The floor plan layout is in respect of 2nd to 45th habitable floors. The furniture, fixtures, interior work, design options and fittings as displayed in this communication are artistic impressions used for indicative purposes only and not part of the standard offerings to be provided in the premises. The areas and dimensions shown, if any, are as per the plans approved by the concerned authority and the same are subject to construction exigencies and variations. Intending purchasers are requested to verify all the details before acting in any manner with respect to the project. Project financed by ICICI Bank Limited.



MAHARERA QR CODE

2+2 JODI - 1451 SQ.FT.*
FURNITURE OPTION - 02 WITH SWING



RERA CARPET AREA	ADDITIONAL AREA	TOTAL AREA
SQ.FT	SQ.FT	SQ.FT
1348	103	1451



Plan Not To Scale

T&C Applied

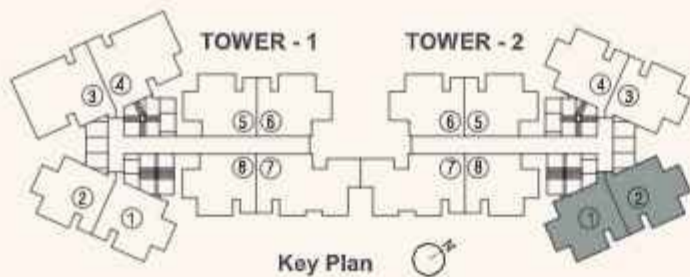
Chandak Treesourous MahaRERA Project Registration No. P51800048658 Available on <https://maharera.mahaonline.gov.in>

Note - The floor plan layout is in respect of 2nd to 45th habitable floors. The furniture, fixtures, interior work, design options and fittings as displayed in this communication are artistic impressions used for indicative purposes only and not part of the standard offerings to be provided in the premises. The areas and dimensions shown, if any, are as per the plans approved by the concerned authority and the same are subject to construction exigencies and variations. Intending purchasers are requested to verify all the details before acting in any manner with respect to the project. Project financed by ICICI Bank Limited.



MAHARERA QR CODE

2+2 JODI - 1495 SQ.FT.*
FURNITURE OPTION - 01



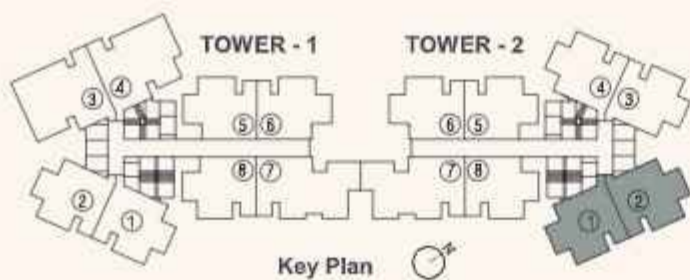
RERA CARPET AREA	ADDITIONAL AREA	TOTAL AREA
SQ.FT	SQ.FT	SQ.FT
1381	114	1495



*T&C Applied



2+2 JODI - 1495 SQ.FT.*
FURNITURE OPTION - 02 WITH SWING



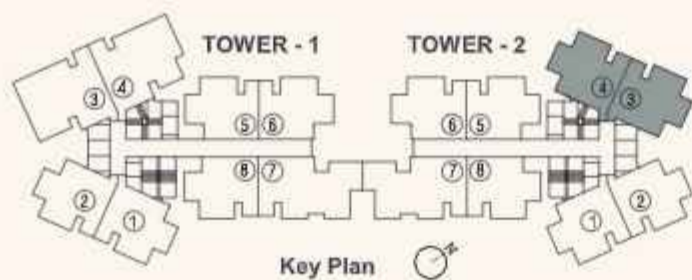
RERA CARPET AREA	ADDITIONAL AREA	TOTAL AREA
SQ.FT	SQ.FT	SQ.FT
1381	114	1495



*T&C Applied



2+2 JODI - 1495 SQ.FT.*
FURNITURE OPTION - 03



RERA CARPET AREA	ADDITIONAL AREA	TOTAL AREA
SQ.FT	SQ.FT	SQ.FT
1381	114	1495



Plan Not To Scale

*T&C Applied

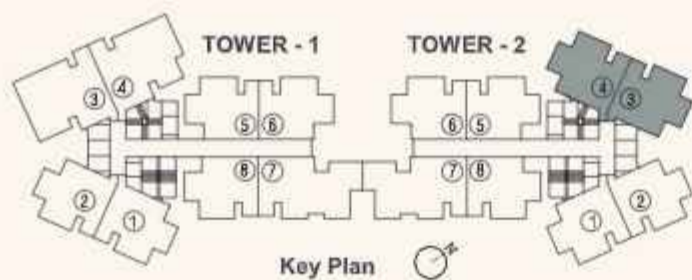
Chandak Treesourous MahaRERA Project Registration No. P51800048658 Available on <https://maharera.mahaonline.gov.in>

Note - The floor plan layout is in respect of 2nd to 45th habitable floors. The furniture, fixtures, interior work, design options and fittings as displayed in this communication are artistic impressions used for indicative purposes only and not part of the standard offerings to be provided in the premises. The areas and dimensions shown, if any, are as per the plans approved by the concerned authority and the same are subject to construction exigencies and variations. Intending purchasers are requested to verify all the details before acting in any manner with respect to the project. Project financed by ICICI Bank Limited.



MAHARERA QR CODE

2+2 JODI - 1495 SQ.FT.*
FURNITURE OPTION - 04 WITH SWING



RERA CARPET AREA	ADDITIONAL AREA	TOTAL AREA
SQ.FT	SQ.FT	SQ.FT
1381	114	1495



Plan Not To Scale

*T&C Applied

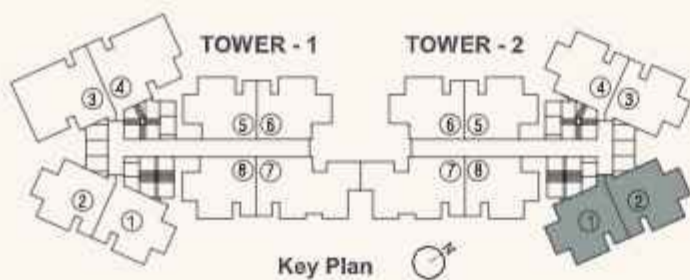
Chandak Treasourous MahaRERA Project Registration No. P51800048658 Available on <https://maharera.mahaonline.gov.in>

Note - The floor plan layout is in respect of 2nd to 45th habitable floors. The furniture, fixtures, interior work, design options and fittings as displayed in this communication are artistic impressions used for indicative purposes only and not part of the standard offerings to be provided in the premises. The areas and dimensions shown, if any, are as per the plans approved by the concerned authority and the same are subject to construction exigencies and variations. Intending purchasers are requested to verify all the details before acting in any manner with respect to the project. Project financed by ICICI Bank Limited.



MAHARERA QR CODE

JODI - 1495 SQ.FT.*
FURNITURE OPTION - 01



RERA CARPET AREA	ADDITIONAL AREA	TOTAL AREA
SQ.FT	SQ.FT	SQ.FT
1381	114	1495



*T&C Applied

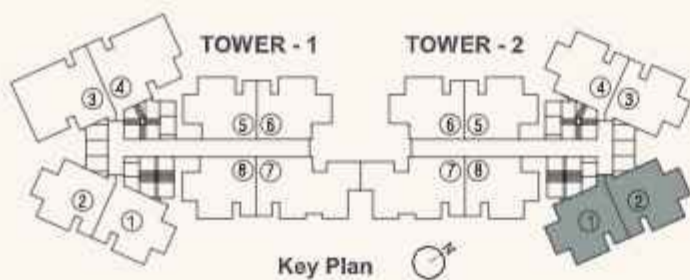
Chandak Treesourous MahaRERA Project Registration No. P51800048658 Available on <https://maharera.mahaonline.gov.in>

Note - The floor plan layout is in respect of 2nd to 45th habitable floors. The furniture, fixtures, interior work, design options and fittings as displayed in this communication are artistic impressions used for indicative purposes only and not part of the standard offerings to be provided in the premises. The areas and dimensions shown, if any, are as per the plans approved by the concerned authority and the same are subject to construction exigencies and variations. Intending purchasers are requested to verify all the details before acting in any manner with respect to the project. Project financed by ICICI Bank Limited.



MAHARERA QR CODE

JODI - 1495 SQ.FT.*
FURNITURE OPTION - 02



RERA CARPET AREA	ADDITIONAL AREA	TOTAL AREA
SQ.FT	SQ.FT	SQ.FT
1381	114	1495



*T&C Applied

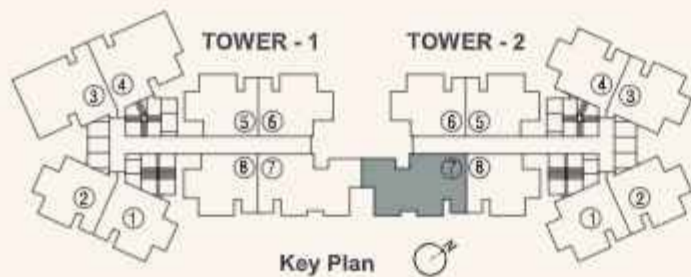
Chandak Treesourous MahaRERA Project Registration No. P51800048658 Available on <https://maharera.mahaonline.gov.in>

Note - The floor plan layout is in respect of 2nd to 45th habitable floors. The furniture, fixtures, interior work, design options and fittings as displayed in this communication are artistic impressions used for indicative purposes only and not part of the standard offerings to be provided in the premises. The areas and dimensions shown, if any, are as per the plans approved by the concerned authority and the same are subject to construction exigencies and variations. Intending purchasers are requested to verify all the details before acting in any manner with respect to the project. Project financed by ICICI Bank Limited.



MAHARERA QR CODE

3 BHK - 1019 SQ.FT.*



RERA CARPET AREA	ADDITIONAL AREA	TOTAL AREA
SQ.FT	SQ.FT	SQ.FT
955	64	1019



T&C Applied

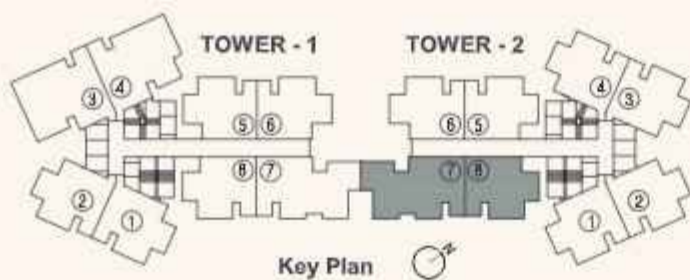
Chandak Treesourous MahaRERA Project Registration No. P51800048658 Available on <https://maharera.mahaonline.gov.in>

Note - The floor plan layout is in respect of 2nd to 45th habitable floors. The furniture, fixtures, interior work, design options and fittings as displayed in this communication are artistic impressions used for indicative purposes only and not part of the standard offerings to be provided in the premises. The areas and dimensions shown, if any, are as per the plans approved by the concerned authority and the same are subject to construction exigencies and variations. Intending purchasers are requested to verify all the details before acting in any manner with respect to the project. Project financed by ICICI Bank Limited.



MAHARERA QR CODE

3+2 JODI - 1761 SQ.FT.*
FURNITURE OPTION - 02 WITH SWING



RERA CARPET AREA	ADDITIONAL AREA	TOTAL AREA
SQ.FT	SQ.FT	SQ.FT
1639	122	1761



*T&C Applied

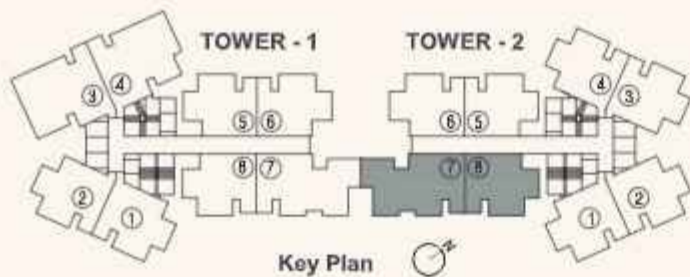
Chandak Treesourous MahaRERA Project Registration No. P51800048658 Available on <https://maharera.mahaonline.gov.in>

Note - The floor plan layout is in respect of 2nd to 45th habitable floors. The furniture, fixtures, interior work, design options and fittings as displayed in this communication are artistic impressions used for indicative purposes only and not part of the standard offerings to be provided in the premises. The areas and dimensions shown, if any, are as per the plans approved by the concerned authority and the same are subject to construction exigencies and variations. Intending purchasers are requested to verify all the details before acting in any manner with respect to the project. Project financed by ICICI Bank Limited.



MAHARERA QR CODE

3+2 JODI - 1761 SQ.FT.*
FURNITURE OPTION - 03



RERA CARPET AREA	ADDITIONAL AREA	TOTAL AREA
SQ.FT	SQ.FT	SQ.FT
1639	122	1761



T&C Applied

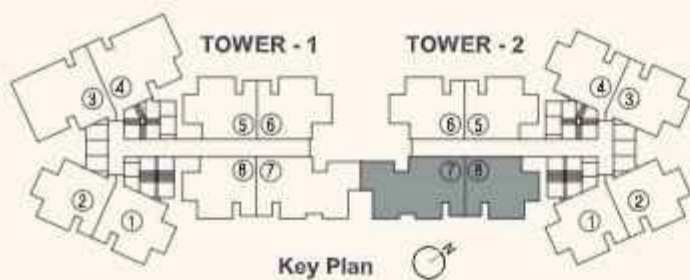
Chandak Treesourous MahaRERA Project Registration No. P51800048658 Available on <https://maharera.mahaonline.gov.in>

Note - The floor plan layout is in respect of 2nd to 45th habitable floors. The furniture, fixtures, interior work, design options and fittings as displayed in this communication are artistic impressions used for indicative purposes only and not part of the standard offerings to be provided in the premises. The areas and dimensions shown, if any, are as per the plans approved by the concerned authority and the same are subject to construction exigencies and variations. Intending purchasers are requested to verify all the details before acting in any manner with respect to the project. Project financed by ICICI Bank Limited.



MAHARERA QR CODE

3+2 JODI - 1761 SQ.FT.*
FURNITURE OPTION - 04 WITH SWING



RERA CARPET AREA	ADDITIONAL AREA	TOTAL AREA
SQ.FT	SQ.FT	SQ.FT
1639	122	1761



T&C Applied

Chandak Treesourous MahaRERA Project Registration No. P51800048658 Available on <https://maharera.mahaonline.gov.in>

Note - The floor plan layout is in respect of 2nd to 45th habitable floors. The furniture, fixtures, interior work, design options and fittings as displayed in this communication are artistic impressions used for indicative purposes only and not part of the standard offerings to be provided in the premises. The areas and dimensions shown, if any, are as per the plans approved by the concerned authority and the same are subject to construction exigencies and variations. Intending purchasers are requested to verify all the details before acting in any manner with respect to the project. Project financed by ICICI Bank Limited.



MAHARERA QR CODE



Chandak Treasures MahaRERA Project Registration No. P51800048658  Available on <https://maharera.mahaonline.gov.in>

Note- This communication is purely conceptual and not a legal offering. The information contained herein is only indicative in nature. The building design and project amenities and facilities are subject to final approval granted/to be granted by the concerned authority. All the artworks, features, facilities, views, surroundings, landscape, plans, amenities, images, models, aesthetics, building elevation, furniture, fixtures, interior work, design and/or any other details are artistic conceptualization for illustration purposes only and Promoter has no control over the same. The list of standard offerings, amenities and other details are available for verification at site. Intending purchasers are requested to verify all the details before acting in any manner with respect to the project. Project financed by ICICI Bank Limited.



MAHARERA QR CODE