



◆ a **PLACE** to
celebrate your life



3 BHK LUXURIOUS FLATS & SHOPS

For further details visit : www.gujrera.gujarat.gov.in

RERA REGISTRATION NO.: PR/GJ/VADODARA/VADODARA/Others/

Disclaimer : All plan are subject to amendments and approval by the relevant authorities. All photography and computer imagery are artist's impression and are provided for illustrative and indicative purposes only. While every reasonable care has been taken in providing this information, the developers cannot be held responsible for any inaccuracy. Subjects to Vadodara Jurisdiction.



Developers:
Shree Giriraj Developers

Site: 'SHYAMA ICON' B/h Adventuraa, Opp. Prathana Vihar Flats,
Sevasi, T.P.2 Vadodara 391101. Ph.: +91 99093 74389



• a **PLACE** for
all those who deserve a Grand Welcome

Get transported to a realm of sheer luxury as soon as you make your way through the grand entrance at Shyama Icon, an address you will be proud of.








**SHYAMA
ICON**
 3 BHK LUXURIOUS FLATS & SHOPS



BASEMENT FLOOR LAYOUT PLAN

GROUND FLOOR PLAN



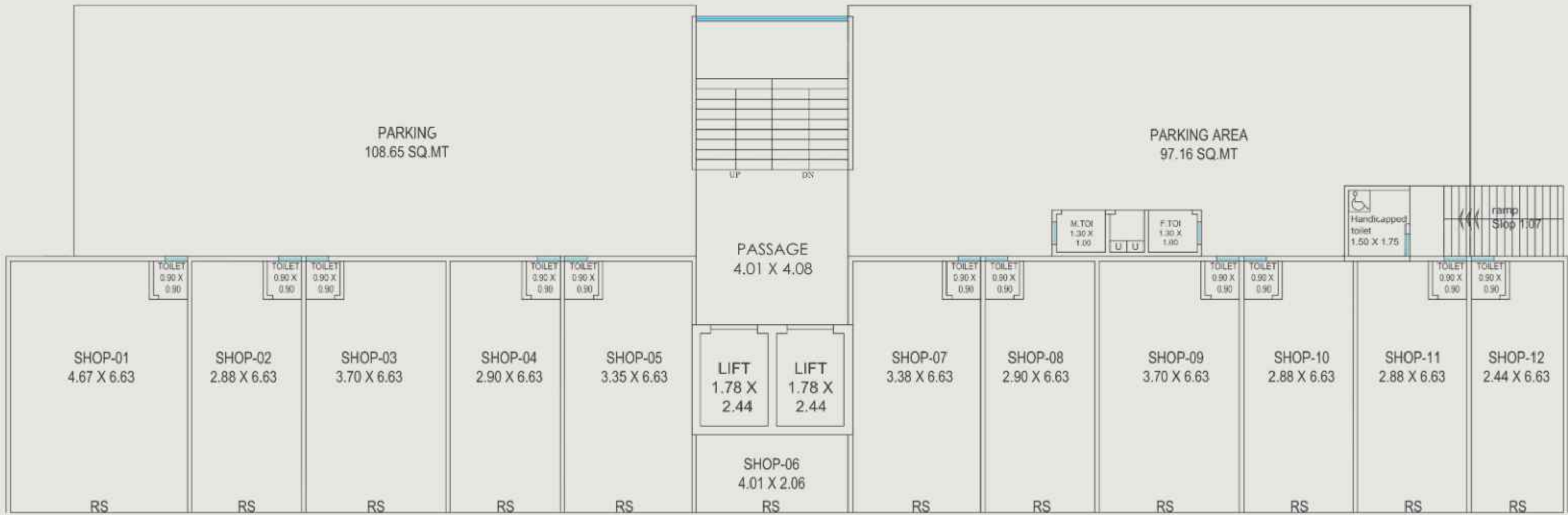
12.00 MT. TP. ROAD

TYPICAL LAYOUT PLAN

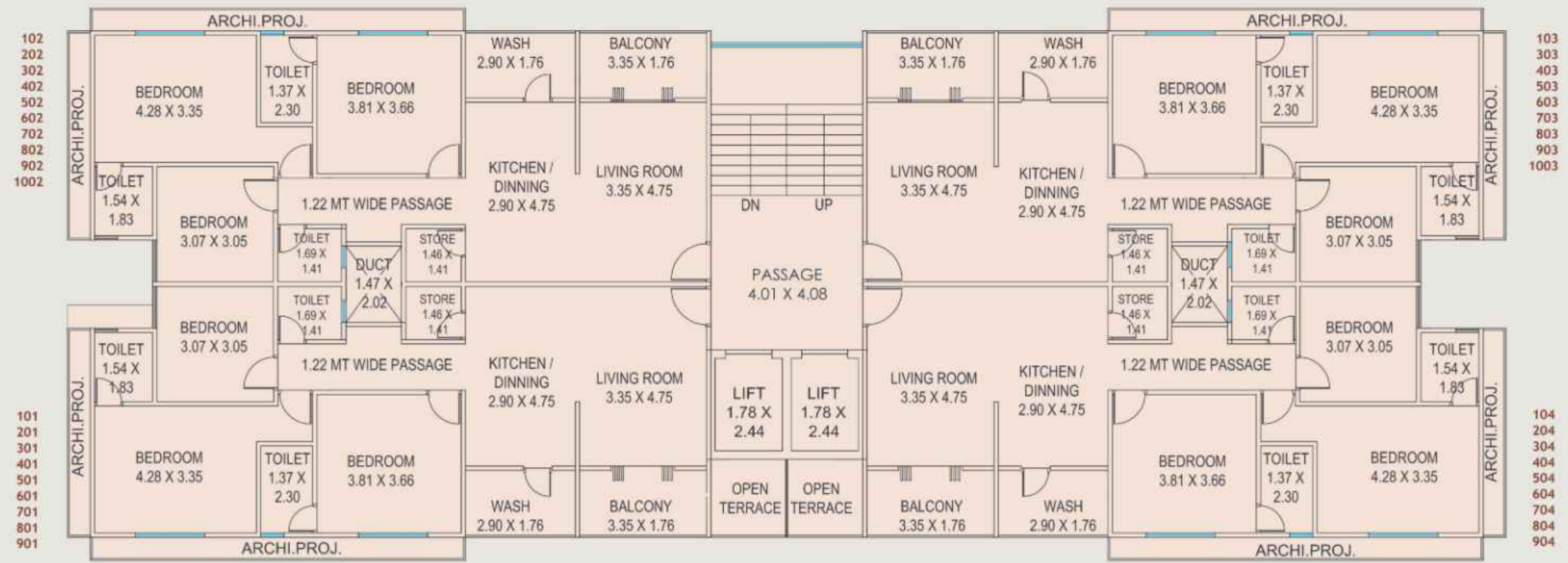


12.00 MT. TP. ROAD

GROUND FLOOR PLAN
TOWER : A

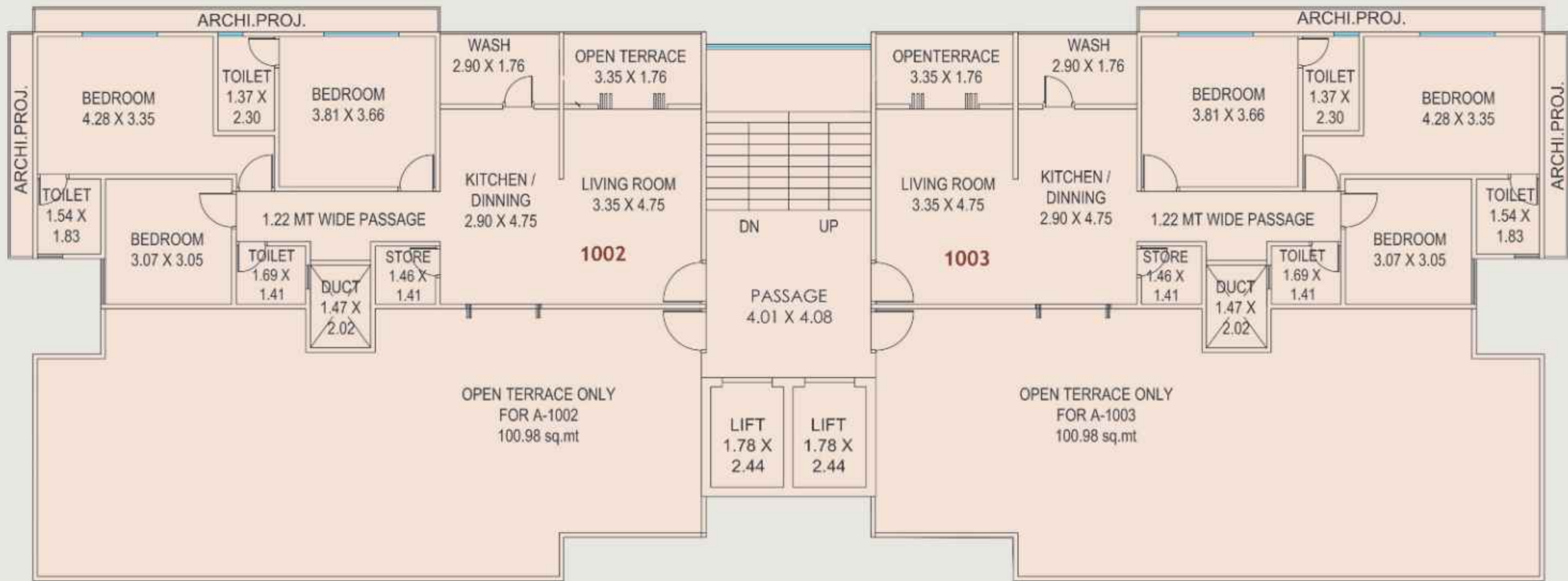


TYPICAL FLOOR PLAN
TOWER : A
 1st to 9th

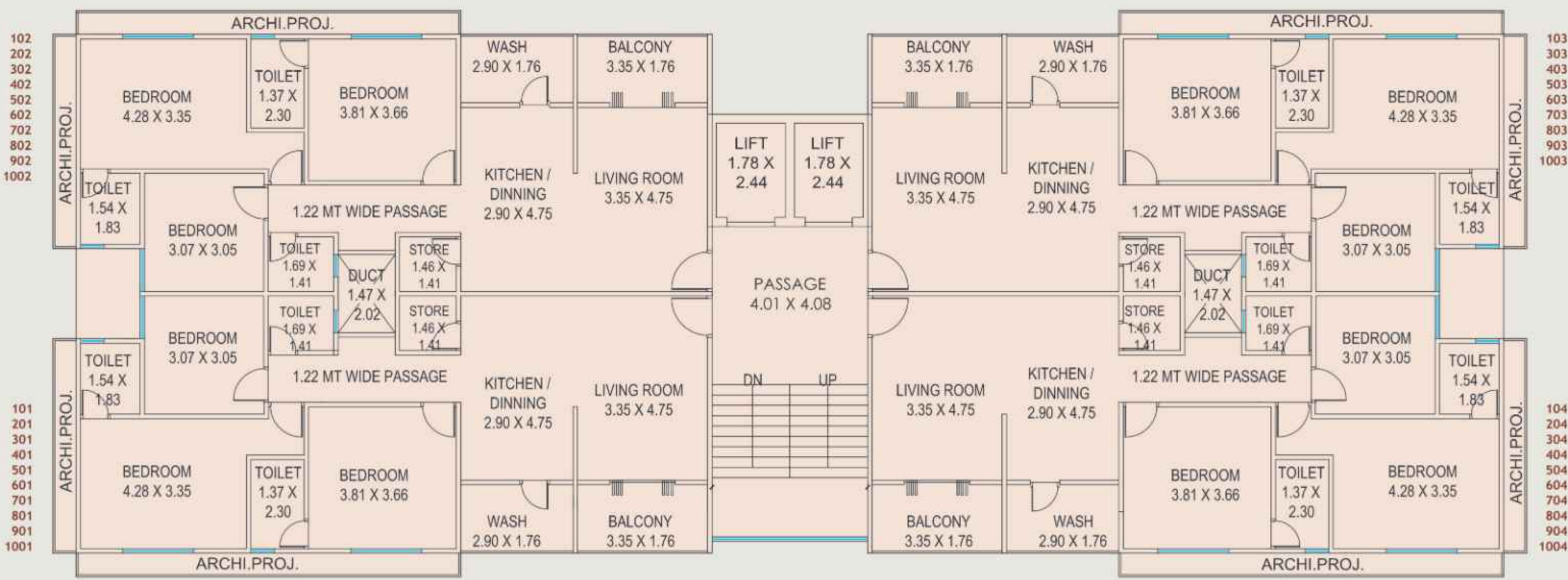


TOWER : A

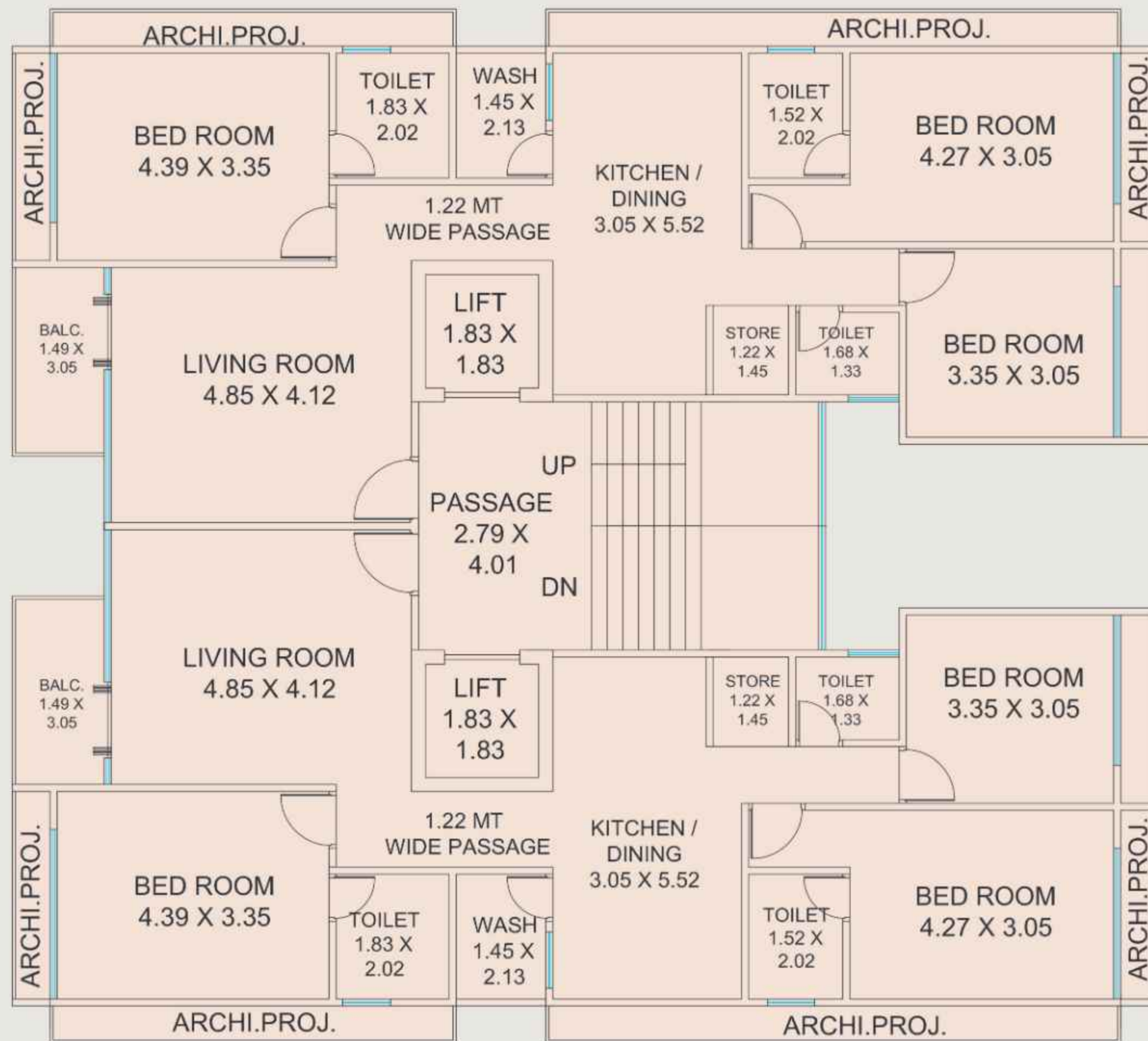
10th Floor Plan



TYPICAL FLOOR PLAN
TOWER : B
 1st to 10th



TYPICAL FLOOR PLAN
TOWER : C



102
202
302
402
502
602
702
802
902
1002

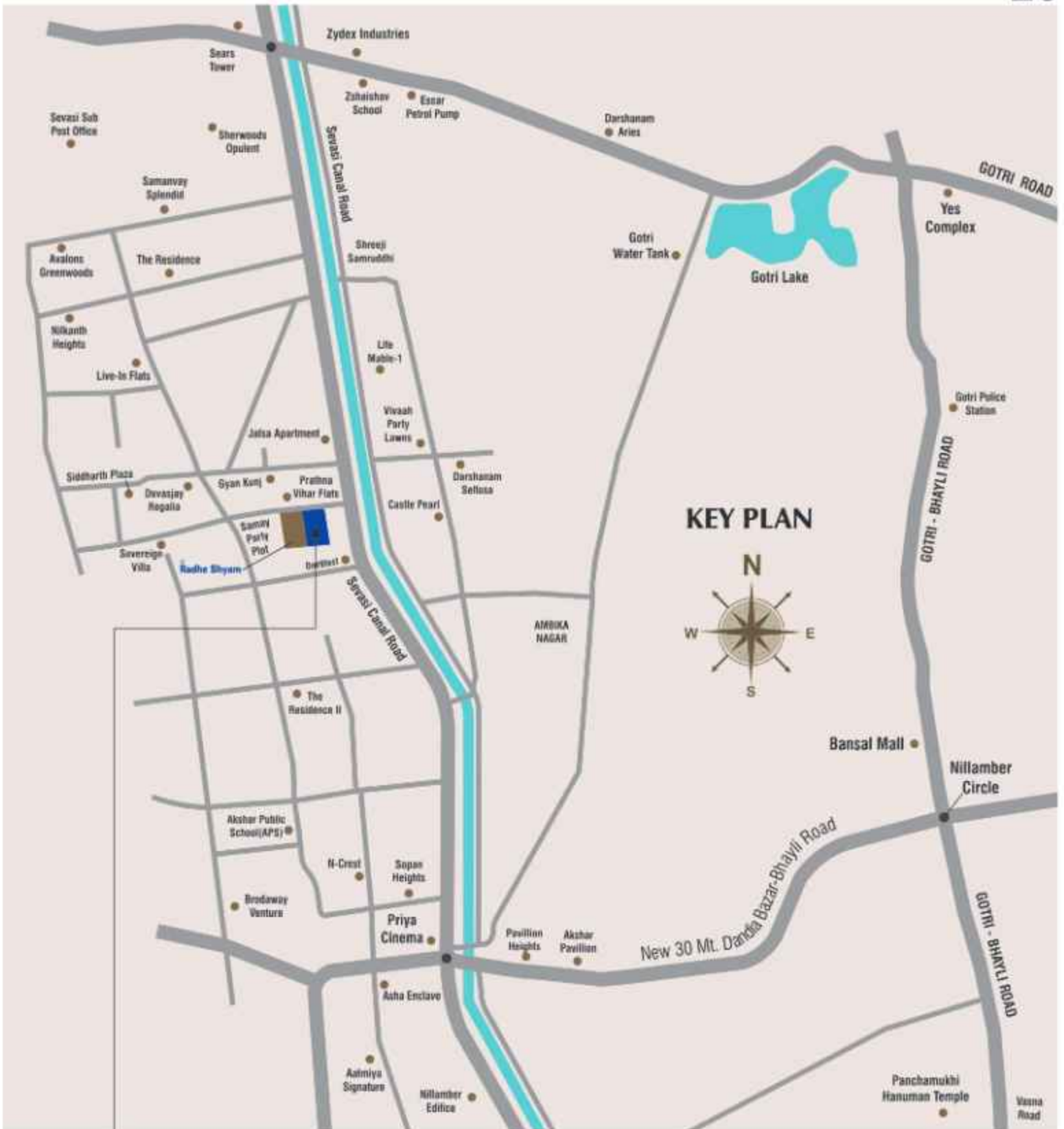
101
201
301
401
501
601
701
801
901
1001





SPECIFICATIONS

- Vitrified Tiles Flooring
- Decorative Main Door & Internal Laminated Doors
- Systematic Wall Concealed CPVC Plumbing, Good Quality Fitting & Tiles Dado up to Slab Level
- Provision for Electric Geyser in Bathroom
- Abundant Electric Point with Modular Switches
- R.O. Water System in Kitchen
- Color Anodized Aluminium Windows with Safety Grills
- Granite Platform with C.P. Fitting & S.S. Sink in Kitchen
- Internal Wall Finished with Putty & Primer
- External Walls Finished with Weather Proof Acrylic Paint
- Borewell & Water Softener Plant
- Provision for A/C Point in Living Room & Bedrooms



Architect: Ruchir Sheth



Structural Consultant: Zama Associates