



VINTAGE

GREENS



EMBRACE
NATURE'S
VINTAGE
CHARM



I

THE BUILDING & ARCHITECTURE



AN ICON
OF
STYLE





A LASTING LEGACY BEGINS HERE



Vintage Greens stands as a symbol of timeless architecture and modern lifestyle. Designed for those who value legacy and aspire to quality living, the project blends nature, elegance, and functionality. Each home is a reflection of thoughtful planning, offering a perfect balance between privacy, comfort, and community spirit. Developed by visionaries with decades of real estate experience, Vintage Green promises a life rooted in trust and elevated by thoughtful design.

Every space within Vintage Greens is created with a clear design intent, to offer harmony between natural surroundings and modern living. From well-ventilated rooms to strategically aligned balconies, each layout enhances lifestyle flow and family interaction. Our planning ensures that daily living is effortless, and every square foot is truly usable. This is more than just design; it's mindful living, brought to life through architecture.

ELEVATE
YOUR
LIVING
EXPERIENCE



THE ART OF SERENE TRANQUILITY



Here, each sunrise filters gently through lush green canopies, casting a warm, golden glow along thoughtfully crafted pathways. Vintage Greens is more than just a home. It is a peaceful pause from the rush of everyday life, a sanctuary where you reconnect with what truly matters. Designed with care, it blends modern living with timeless calm, creating harmony between comfort and nature. Here, architecture and the natural world come together to create an experience that is both inspiring and grounding. Every detail has been considered, from the rustle of leaves to the quiet of open spaces, inviting you to slow down, breathe deeply, and live more meaningfully. Vintage Greens is not just where you rest; it is where your spirit thrives, gracefully and naturally. Beyond its beauty, this community supports a balanced lifestyle. Mornings begin with fresh air on tree-lined trails, and evenings offer quiet reflection under starry skies. It is a place to connect with yourself and those you cherish. Every element, from the textures beneath your feet to the light through the windows, is designed to enrich your everyday life.



II

THE LOCATION & LIFESTYLE



A RARE
FIND OF AN
ADDRESS





A LANDMARK ABOVE ALL HORIZONS



ACCESS LUXURY FROM EVERY DIRECTION

- 20 min Sukhna Lake
- 25 Min PGI Hospital
- 20 Min Elante Mall
- 10 Min Paras Downtown
- 10 Min J.P Hospital
- 10 Min Bus Stand
- 8 Min Cosmo Mall
- 5 Min Decathlon Sports
- 5 Min International Airport
- 3 Min Dmart
- 3 Min Upcoming Max Hospital
- 25 Min Panjab University



III

THE FEATURES & AMENITIES



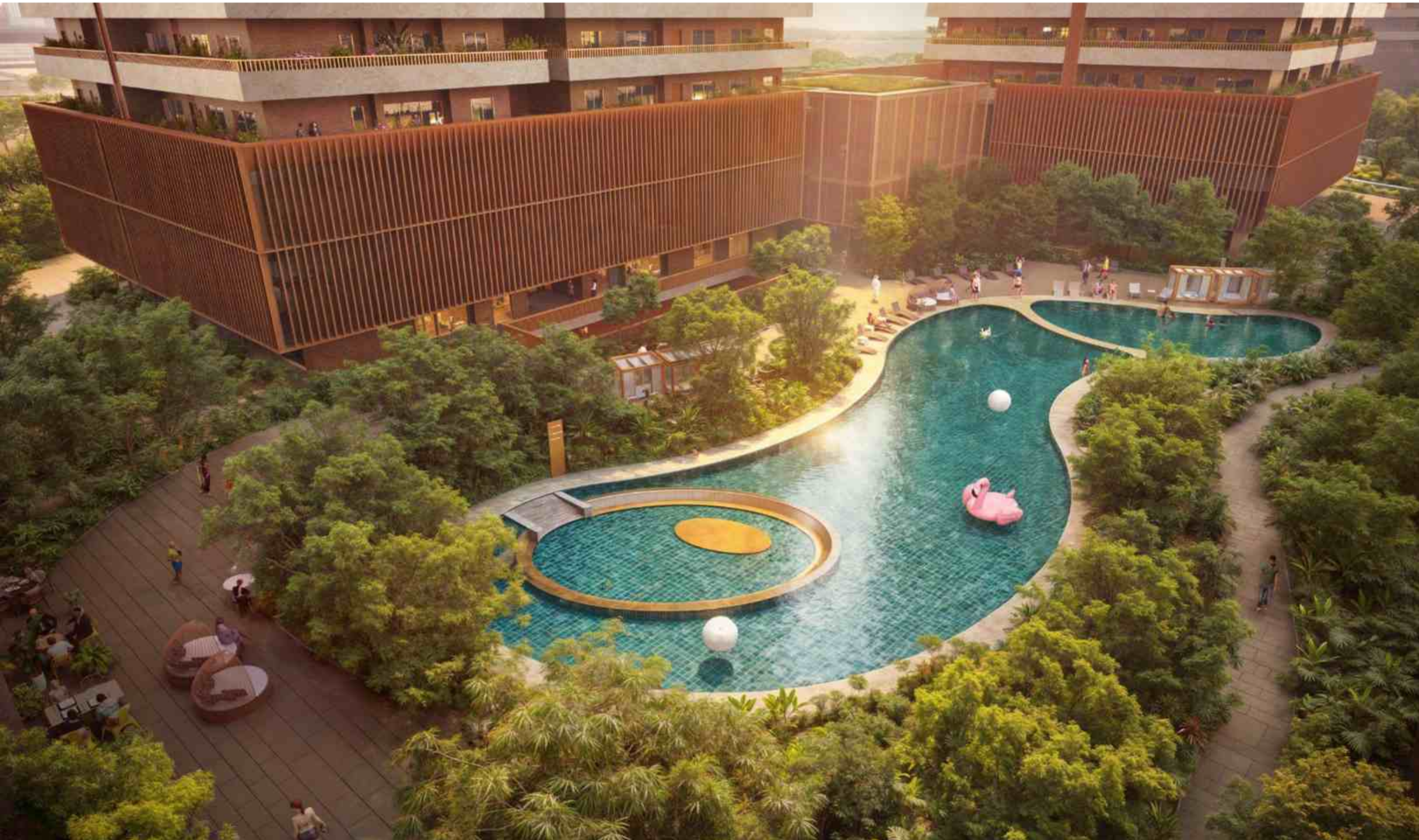
THE ART
OF LIVING
WELL





CRAFTED
FOR
CONSCIOUS
LIVING





INDULGE IN EXQUISITE OASIS

Step into a sanctuary where relaxation is reimagined. At Vintage Greens, thoughtfully curated wellness zones bring together the soothing power of nature and the elegance of contemporary design. From peaceful open-air retreats to indulgent indoor moments, every corner is crafted to elevate your everyday.

Whether it's a quiet afternoon surrounded by trees or a gentle pause in the warmth of indoor comfort, this is where serenity becomes a lifestyle. Discover spaces that go beyond the ordinary, spaces that listen, calm, and inspire.

At Vintage Greens, leisure isn't an amenity. It's a way of life.

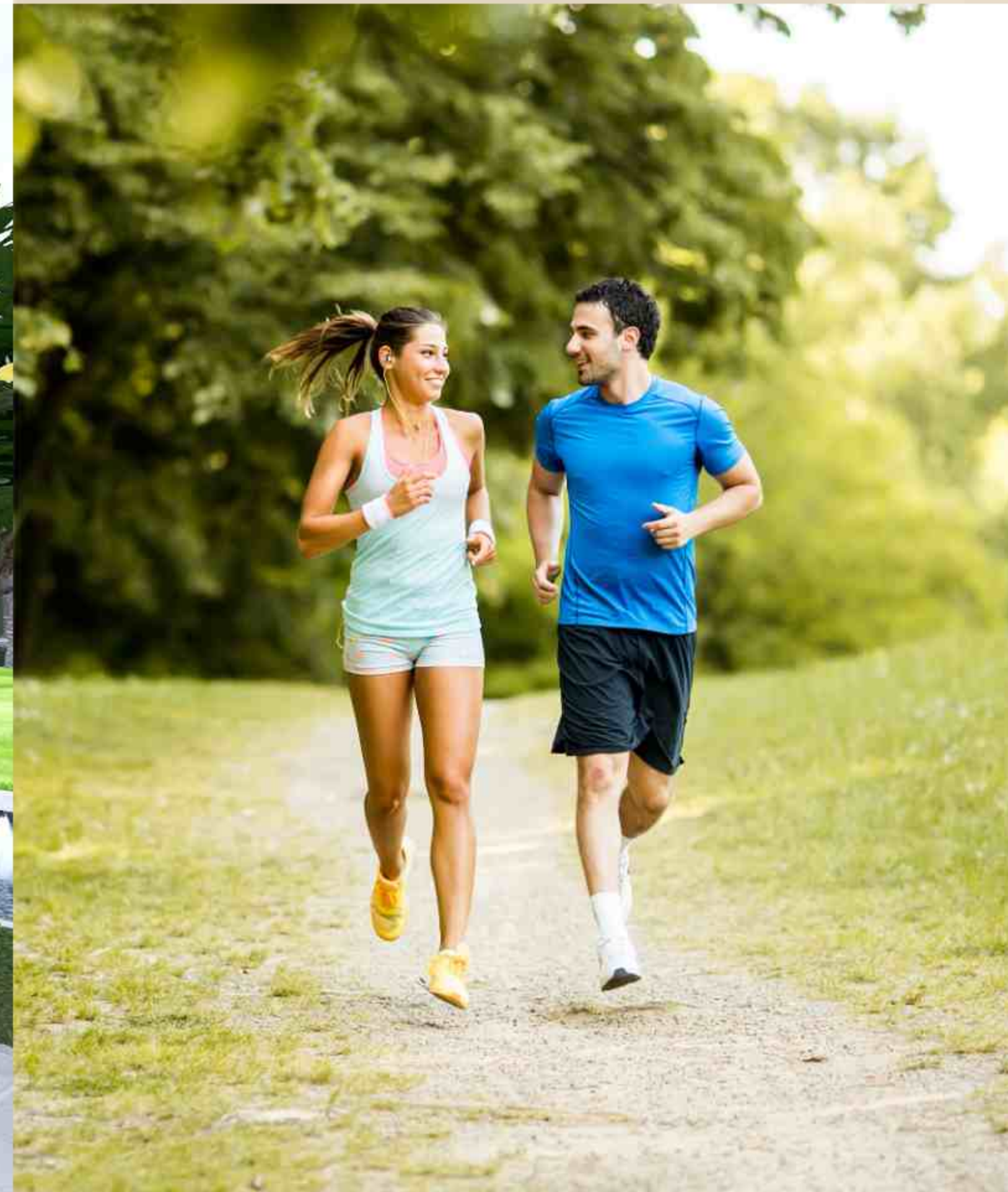
A VIBRANT TAPESTRY OF DELIGHT

Step into a world where imagination flourishes. At Vintage Greens, our thoughtfully designed play spaces blend the joy of childhood with the tranquility of nature. From vibrant outdoor playgrounds to serene indoor nooks, every area is crafted to inspire creativity and relaxation.

Whether it's an adventurous day filled with laughter among trees or a quiet moment enjoying art in cozy corners, this is where playtime becomes a cherished experience. Discover environments that nurture, engage, and rejuvenate.

At Vintage Greens, play isn't just an activity. It's a joyful lifestyle.





TRAILS DESIGNED ESPECIALLY FOR YOU

Breathe in the freshness as you glide through tree-lined trails designed for mindful movement. At Vintage Greens, our thoughtfully planned jogging path offers more than a route, it's a rhythm of renewal in nature's embrace.

From morning sprints to evening strolls, every step taken along this path is an invitation to reconnect with yourself. The landscaped surroundings and seamless layout ensure your journey is as soothing as it is energizing.

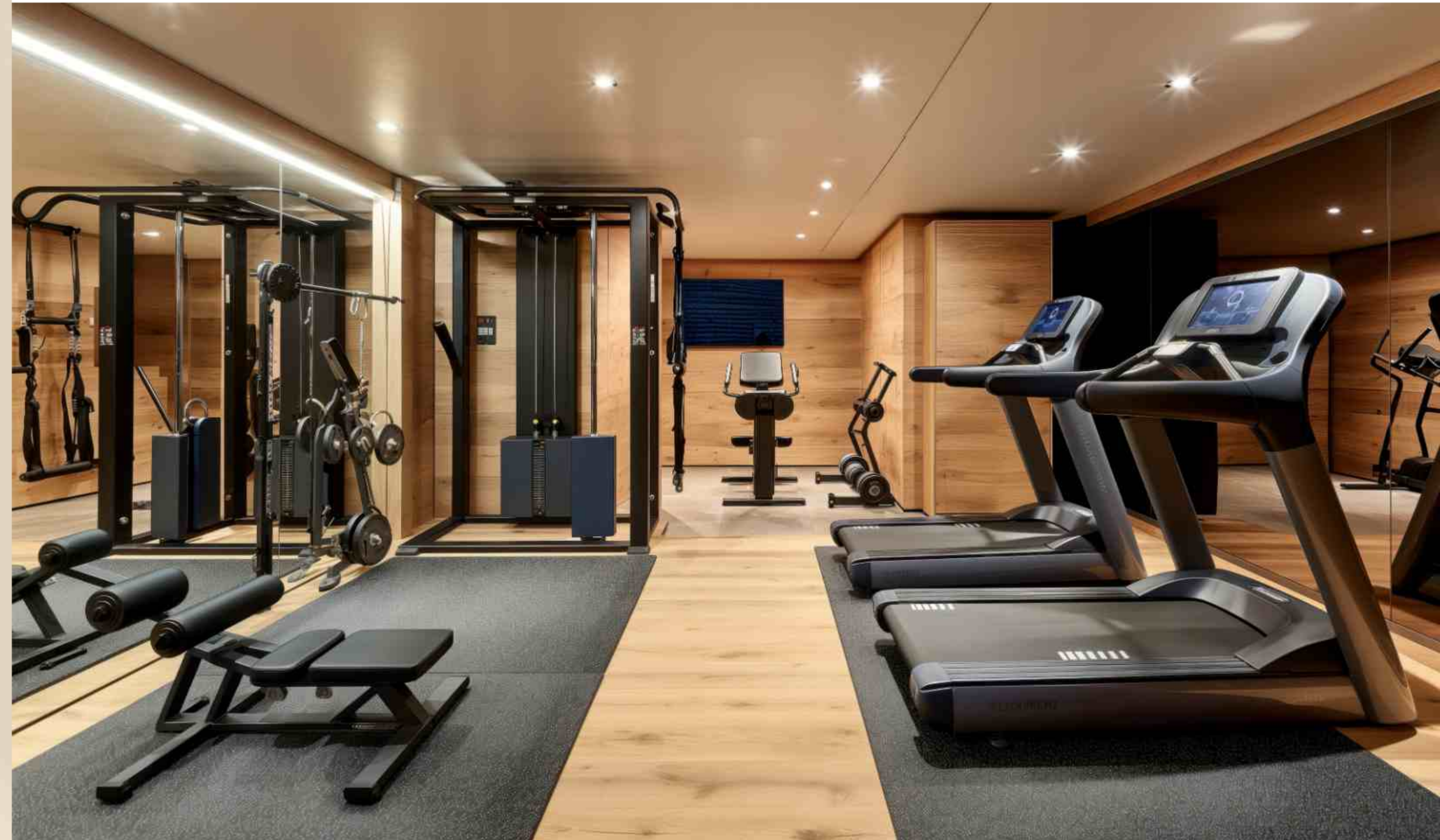
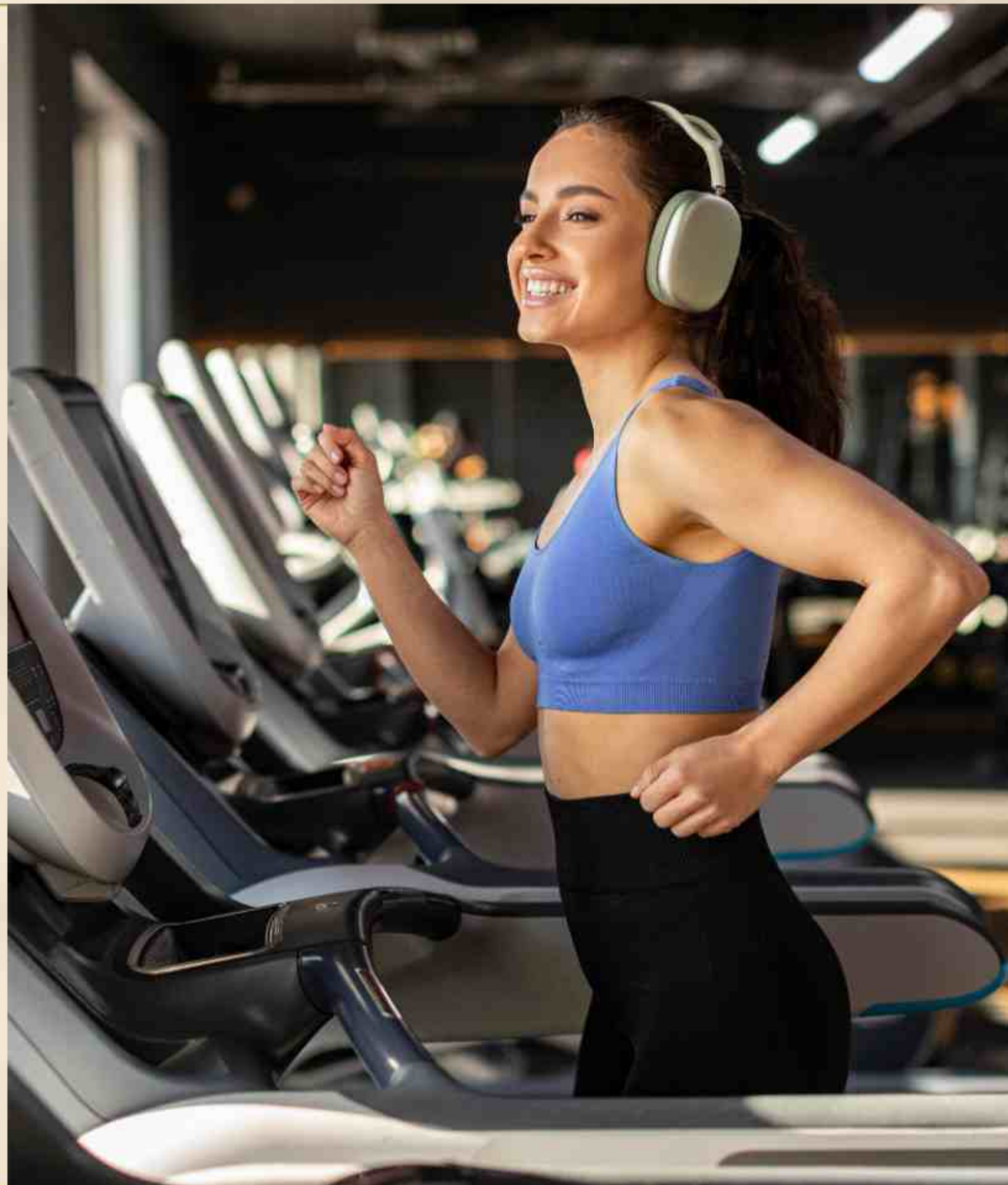
At Vintage Greens, wellness doesn't pause at your doorstep, it flows through every pathway you choose.

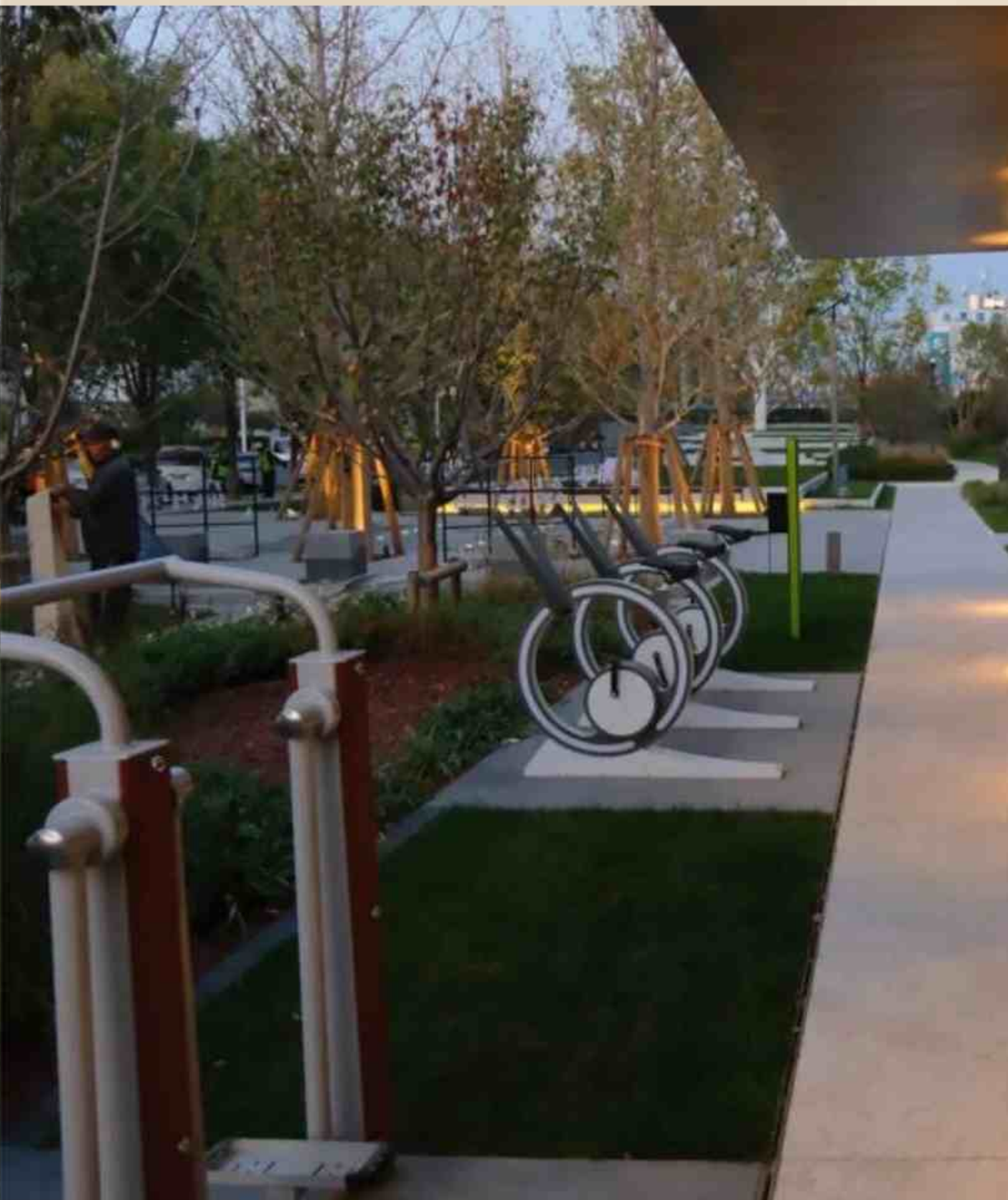
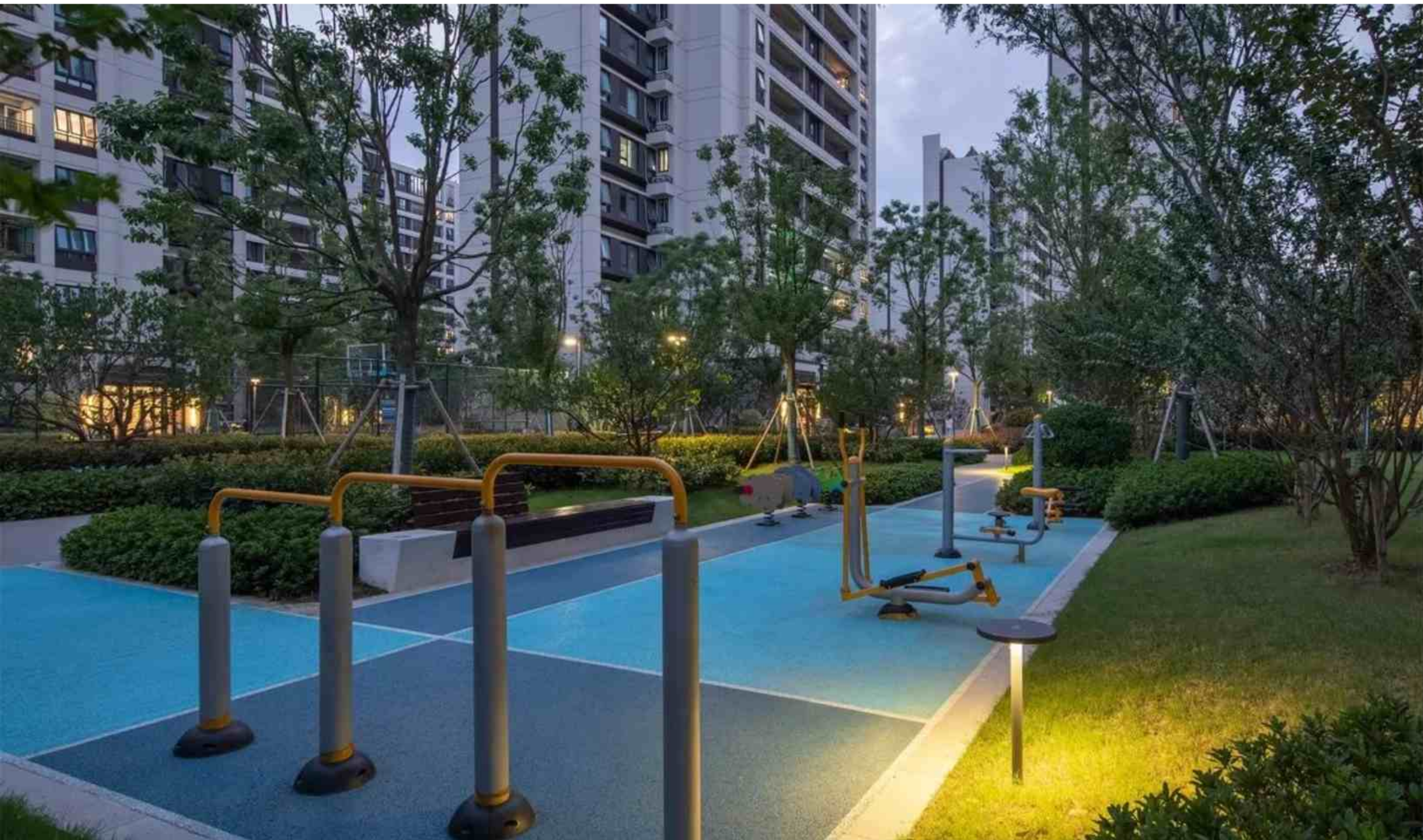
NEXT-GEN FITNESS BEGINS HERE

Step into a realm where fitness meets tranquility. At Vintage Greens, our thoughtfully designed gym area combines cutting-edge equipment with a serene atmosphere. From invigorating workouts to calming stretches, every corner is crafted to enhance your wellness journey.

Whether it's an energizing morning session or a peaceful evening yoga class, this is where fitness becomes a lifestyle. Discover spaces that motivate, rejuvenate, and inspire you to reach your goals. At Vintage Greens, health isn't just a routine. It's a way of life.

At Vintage Greens, the gym isn't just a space. It's your daily reset.





A BREATH OF FRESH STRENGTH

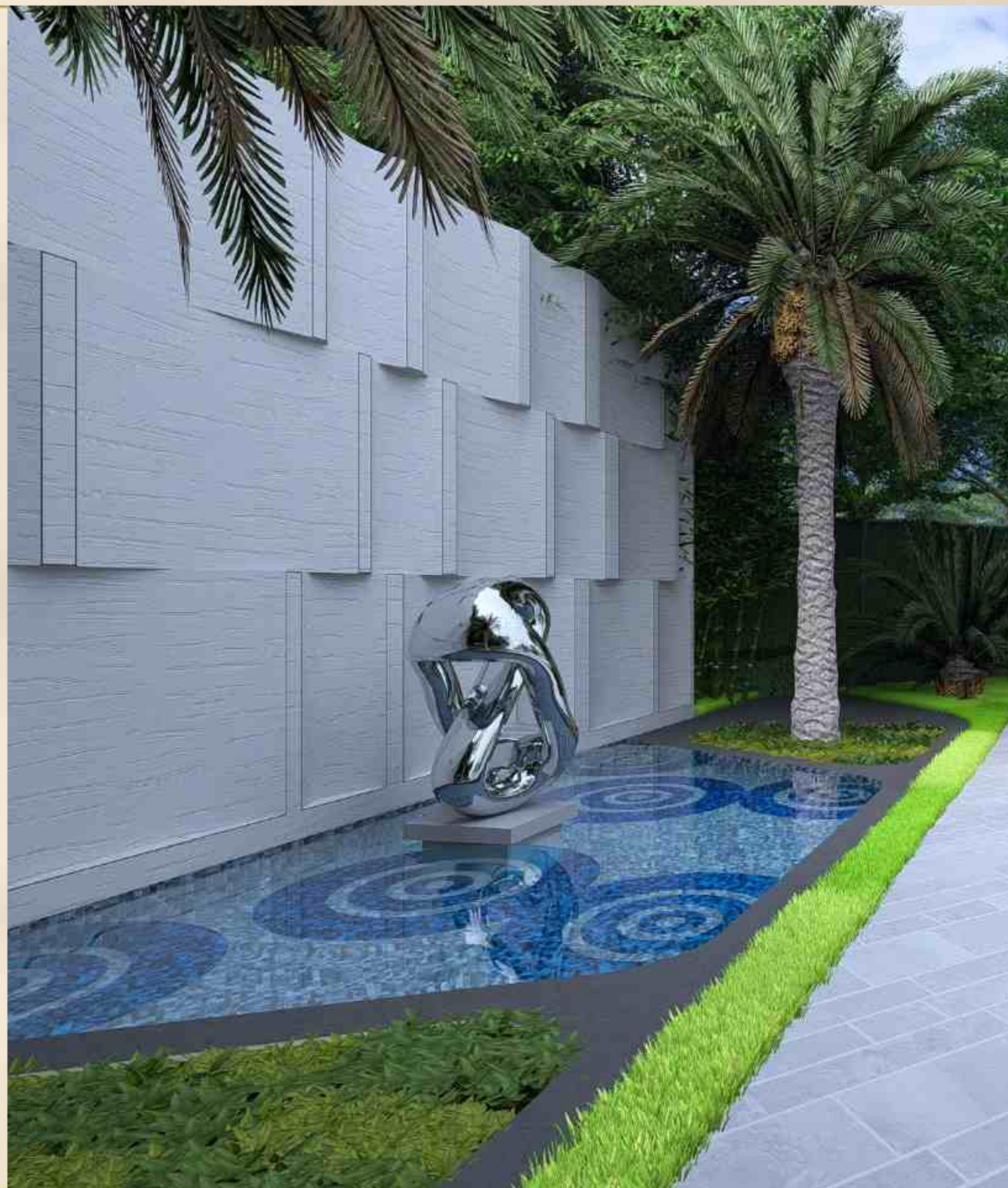
Step into an open-air haven where fresh air awakens your senses and every workout feels naturally invigorating. Thoughtfully designed to blend wellness with nature, this outdoor fitness retreat offers shaded spaces, energizing pathways, and calming green surrounds. Here, you lift, stretch, and move freely under the vast sky, finding strength that flows with the breeze and sunlight. Each session becomes more than just exercise — it's a mindful ritual that balances body and mind.

In this space, daily fitness transforms into moments of renewal, where every breath fills you with calm focus, quiet confidence, and the uplifting freedom to feel truly alive.

WHISPERS OF CALM, OPEN SERENITY

Step into a world where expansive green avenues and thoughtfully curated landscapes redefine everyday living. Here, open spaces aren't just about design, they're about giving life room to flourish. Unwind under canopies of shade, wander through tranquil pathways, or simply pause to take in the gentle rhythm of nature around you.

These serene realms invite moments of quiet reflection, playful laughter, and effortless connection. In every leaf, breeze, and sunrise, discover a sanctuary where you can slow down, breathe deeply, and feel truly at home.





ENTRANCE FRAMED IN LASTING GRANDEUR

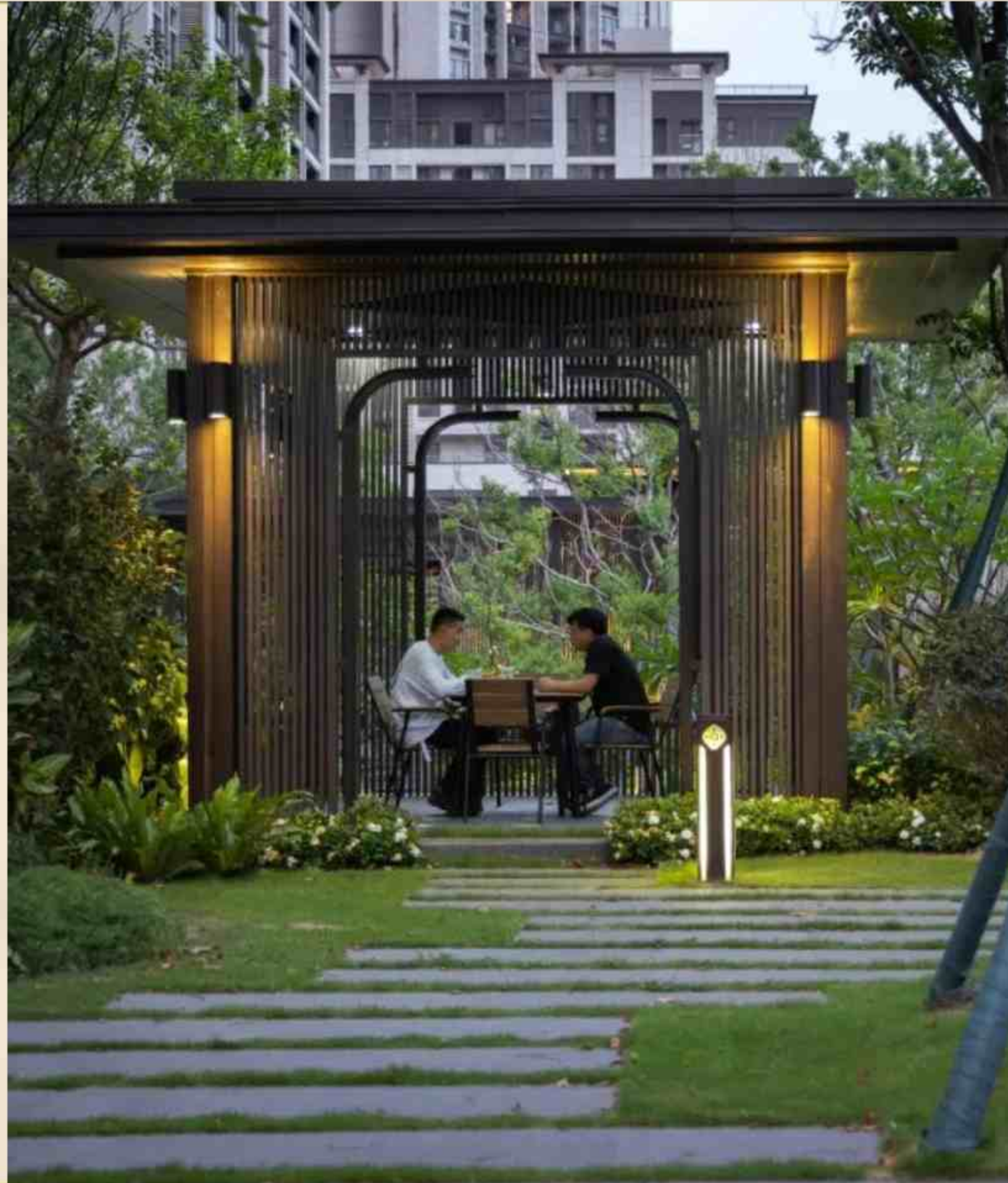
Arrive each day to an entrance that transcends the ordinary and ushers you into a realm of quiet sophistication. Thoughtfully designed with graceful proportions, elegant detailing, and an inviting aura, this grand entryway becomes more than a passage, it becomes a statement. It reflects your taste for refinement and the promise of what lies within.

Here, every welcome feels ceremonial, every departure dignified, and each moment of arrival is marked by a sense of belonging, prestige, and enduring style.

GRACEFUL NOOKS, COVERED IN CHARM

Experience thoughtfully crafted seating areas where design meets everyday ease. Whether fully covered or semi-covered, each space invites you to pause, relax, and savor the moment. Shielded from the elements yet open to fresh breezes and natural light, these havens create perfect corners for quiet reflection, heartfelt conversations, or leisurely afternoons.

Blending comfort with architectural elegance, they transform routine pauses into cherished rituals, offering you a seamless balance of openness, shelter, and timeless style.





WANDER THROUGH VERDANT PATHS

Stroll along thoughtfully crafted pathways that meander through lush, landscaped greens and quiet corners of nature's grace. Each gentle curve reveals dappled light, fragrant blossoms, and soothing pockets of shade, inviting you to slow your pace and breathe deeply. Here, design and nature blend seamlessly, creating spaces where morning walks feel restorative and evening wanderings bring quiet reflection.

More than paths, they become daily moments of calm — a graceful journey into serenity, where every step reconnects you with peace and beauty.

REFLECT BESIDE ART IN MOTION

Stand beside sculpted waters where flowing fountains and striking forms create a quiet dialogue with nature. This is more than a centerpiece, it is a sanctuary where motion and stillness coexist. Gentle streams rise and fall around graceful curves, catching sunlight and casting ripples that calm the senses. Here, thoughtful design and fluid movement draw you in, inviting you to pause, reflect, and drift into tranquil thoughts. By day, it sparkles with life; by night, it glows with quiet elegance, becoming a timeless ritual for those who linger nearby. In this place, art and water flow as one, offering a serene moment that softens the rush of everyday life.



◆◆◆
A PLAN
WITH
PURPOSE



LAYOUT PLAN

3 BHK, 3 BHK+1,
4 BHK+1
LUXURY APARTMENTS

UNIT PLAN



TOWER-A (4 BHK+1)

UNIT AREA = 2635.00 SQ. FT.
COMMON AREA = 201.00 SQ. FT.
BALCONY AREA = 960.00 SQ. FT.
SUPER AREA = 3796 SQ. FT.

TOWER-A (4 BHK+1)

UNIT AREA = 2635.00 SQ. FT.
COMMON AREA = 201.00 SQ. FT.
BALCONY AREA = 960.00 SQ. FT.
SUPER AREA = 3796 SQ. FT.

UNIT PLAN



TOWER-B (3 BHK+1)

UNIT AREA = 1950.00 SQ. FT.
COMMON AREA = 292.00 SQ. FT.
BALCONY AREA = 728.00 SQ. FT.
SUPER AREA = 2970.00 SQ. FT.

TOWER-B (3 BHK+1)

UNIT AREA = 1950.00 SQ. FT.
COMMON AREA = 292.00 SQ. FT.
BALCONY AREA = 728.00 SQ. FT.
SUPER AREA = 2970.00 SQ. FT.

UNIT PLAN



TOWER-C (3 BHK+1)

UNIT AREA = 1950.00 SQ. FT.
COMMON AREA = 354.00 SQ. FT.
BALCONY AREA = 394.00 SQ. FT.
SUPER AREA = 2698.00 SQ. FT.

UNIT PLAN



TOWER-D (3 BHK+1)

UNIT AREA = 1950.00 SQ. FT.
COMMON AREA = 354.00 SQ. FT.
BALCONY AREA = 394.00 SQ. FT.
SUPER AREA = 2698.00 SQ. FT.

TOWER-C (3 BHK+1)

UNIT AREA = 1950.00 SQ. FT.
COMMON AREA = 354.00 SQ. FT.
BALCONY AREA = 564.00 SQ. FT.
SUPER AREA = 2868.00 SQ. FT.

TOWER-D (3 BHK+1)

UNIT AREA = 1950.00 SQ. FT.
COMMON AREA = 354.00 SQ. FT.
BALCONY AREA = 394.00 SQ. FT.
SUPER AREA = 2698.00 SQ. FT.

UNIT PLAN



TOWER-E (3 BHK+1)

UNIT AREA = 1950.00 SQ. FT.
COMMON AREA = 354.00 SQ. FT.
BALCONY AREA = 394.00 SQ. FT.
SUPER AREA = 2698.00 SQ. FT.

UNIT PLAN



TOWER-F (3 BHK+1)

UNIT AREA = 1950.00 SQ. FT.
COMMON AREA = 354.00 SQ. FT.
BALCONY AREA = 536.00 SQ. FT.
SUPER AREA = 2840.00 SQ. FT.

TOWER-E (3 BHK+1)

UNIT AREA = 1950.00 SQ. FT.
COMMON AREA = 354.00 SQ. FT.
BALCONY AREA = 394.00 SQ. FT.
SUPER AREA = 2698.00 SQ. FT.

TOWER-F (3 BHK+1)

UNIT AREA = 1950.00 SQ. FT.
COMMON AREA = 354.00 SQ. FT.
BALCONY AREA = 394.00 SQ. FT.
SUPER AREA = 2698.00 SQ. FT.

UNIT PLAN



TOWER-I (3 BHK)

UNIT AREA = 1685.00 SQ. FT.
COMMON AREA = 349.00 SQ. FT.
BALCONY AREA = 546.00 SQ. FT.
SUPER AREA = 2580.00 SQ. FT.

UNIT PLAN



TOWER-J (3 BHK)

UNIT AREA = 1685.00 SQ. FT.
COMMON AREA = 349.00 SQ. FT.
BALCONY AREA = 316.00 SQ. FT.
SUPER AREA = 2350.00 SQ. FT.

TOWER-J (3 BHK)

UNIT AREA = 1685.00 SQ. FT.
COMMON AREA = 349.00 SQ. FT.
BALCONY AREA = 546.00 SQ. FT.
SUPER AREA = 2580.00 SQ. FT.



In a world of shifting skylines and fleeting trends, only a few names stand the test of time, not just because they construct buildings, but because they craft legacies. **Vintage Buildtech** is one such name. A brand founded not just on blueprints, but on belief. A belief that homes aren't built with bricks alone, they're built with trust, emotion, and purpose.

At the heart of this philosophy stand two visionary leaders, **Mr. Gurpreet Singh Batra** and **Mr. Satish Kumar Arora** whose combined real estate journey spans over two decades. Together, they have not merely developed properties but nurtured communities that flourish, families that feel proud, and neighborhoods that evolve into landmarks.

Their journey began not in glossy offices, but with a grounded understanding of what a home truly means to people — comfort, dignity, aspiration, and permanence. This people-first approach led to the successful delivery of Tulip Heights, a project that wasn't just a residential address but a milestone in the region's real estate narrative.

Mr. Gurpreet Singh Batra, with a deep-rooted legacy in real estate and a celebrated track record in the hospitality industry, brings with him unmatched finesse and a keen eye for lifestyle detailing. His client-centric mindset ensures that every development is more than functional, it is meaningful.

Mr. Satish Kumar Arora, renowned for his steadfast integrity and intuitive sense of value, is the anchor behind every strategic decision. His commitment to quality and transparency continues to define Vintage Buildtech's signature.

Together, they have built more than homes, they've built faith, delivered on promises, and elevated expectations. With every new project, Vintage Buildtech carries forward a legacy of excellence, creating timeless spaces that speak of quality, emotion, and enduring value.

Because at Vintage Buildtech, we don't just raise buildings — we raise standards, we raise dreams

OUR VISION

To be a symbol of timeless living by creating thoughtfully designed spaces that nurture community, elevate lifestyle, and stand as enduring landmarks of trust, quality, and elegance.

OUR MISSION

To develop residential environments where design meets purpose, nature meets comfort, and families find not just houses, but homes. Guided by integrity, craftsmanship, and experience, we aim to deliver value-driven developments that inspire pride and foster belonging.



Corporate Office: Dummy Text Comes Here, Pin-140301
Site Office: Dummy Text Comes Here, Dummy Text Comes Here, Pin-140301

Disclaimer: Any information contained herein (whether in the text, plans or renders) is given in good faith and should not be relied upon as being a statement or representation of fact. The stock images are for representative purpose only. The developer reserves the right to alter any part of the specification without notice. These particulars are prepared for the guidance of prospective buyers.