




**WINDS  
OF LIFE**



Presenting **Winds of Life** – spacious 3 BHK villaments on Sanjapur Road, designed for those who seek the privacy of a villa and the convenience of an apartment. A home that gives you space to breathe, views to cherish, and moments to enjoy every day.



# Introducing Winds of Life

of refined living surrounded by  
nature and excellent connectivity.

Exclusive  
3 BHK  
Villaments





# Expansive Balcony

Spacious Units

Balconies designed to extend your living space into the open air.

TWO  
FAMILIES  
in a Floor





Located Near

Sarjapur Main Road












A true game changer for the area

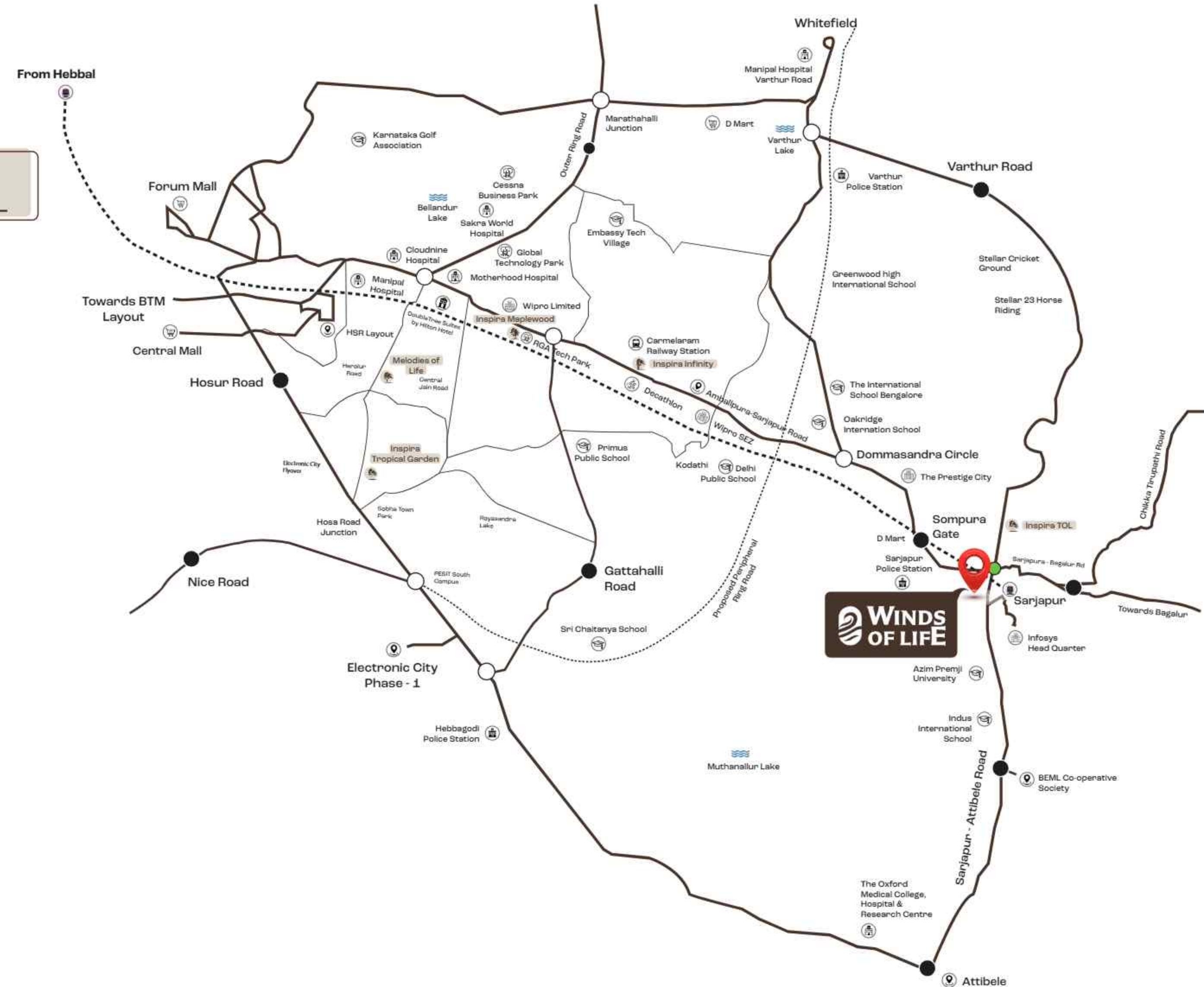




# The Perfect location for all your life's Needs

A location for vision.  
A location for achievement

- |   |                   |
|---|-------------------|
|  Infosys Headquarters           | <b>5 Mins</b>     |
|  Azim Premji University        | <b>4 Mins</b>     |
|  Forum The Prestige City       | <b>5-10 Mins</b>  |
|  Manipal Hospital              | <b>15-20 Mins</b> |
|  Oakridge International School | <b>10-12 Mins</b> |
|  Super Market - Dmart          | <b>2 Mins</b>     |
|  Sarjapur Decathlon            | <b>15-20 Mins</b> |
|  Oxygen Mall                   | <b>5-10 Mins</b>  |
|  Sarjapur Social               | <b>10-15 Mins</b> |
|  RGA Tech Park                 | <b>15-20 Mins</b> |
|  Wipro Corporate Office        | <b>10-13 Mins</b> |





# Project Overview

A Prime location offering seamless connectivity.





# A place for Love and Memories

More than just a space  
it's where love and memories flourish





# A Flourishing

## Development Cluster

Expansive community cluster development plan comprising of High rise apartments, villas and commercial spaces curated to offer a diverse living experience.

5 ACRES  
B+G+4 Floors  
224 HOMES



# KEY HIGHLIGHTS



VILLAMENTS  
B+G+4 Floors

224 UNITS  
Exclusive 3 BHK's

2 Families  
in a Floor

FACING  
East & North

1753 SQFT  
onwards\*

Balcony in Living  
+All Bedrooms

Every Unit  
East-West Ventilated

Premium  
Specifications

All Ground Floors : Exclusive Usage Area of Lawn

All Top Floors : Exclusive Usage Area of Terrace



# UNIT PLANS



SPACIOUS  
3BHK Villaments

HIGH  
Carpet Area Efficiency

25+  
Amenities

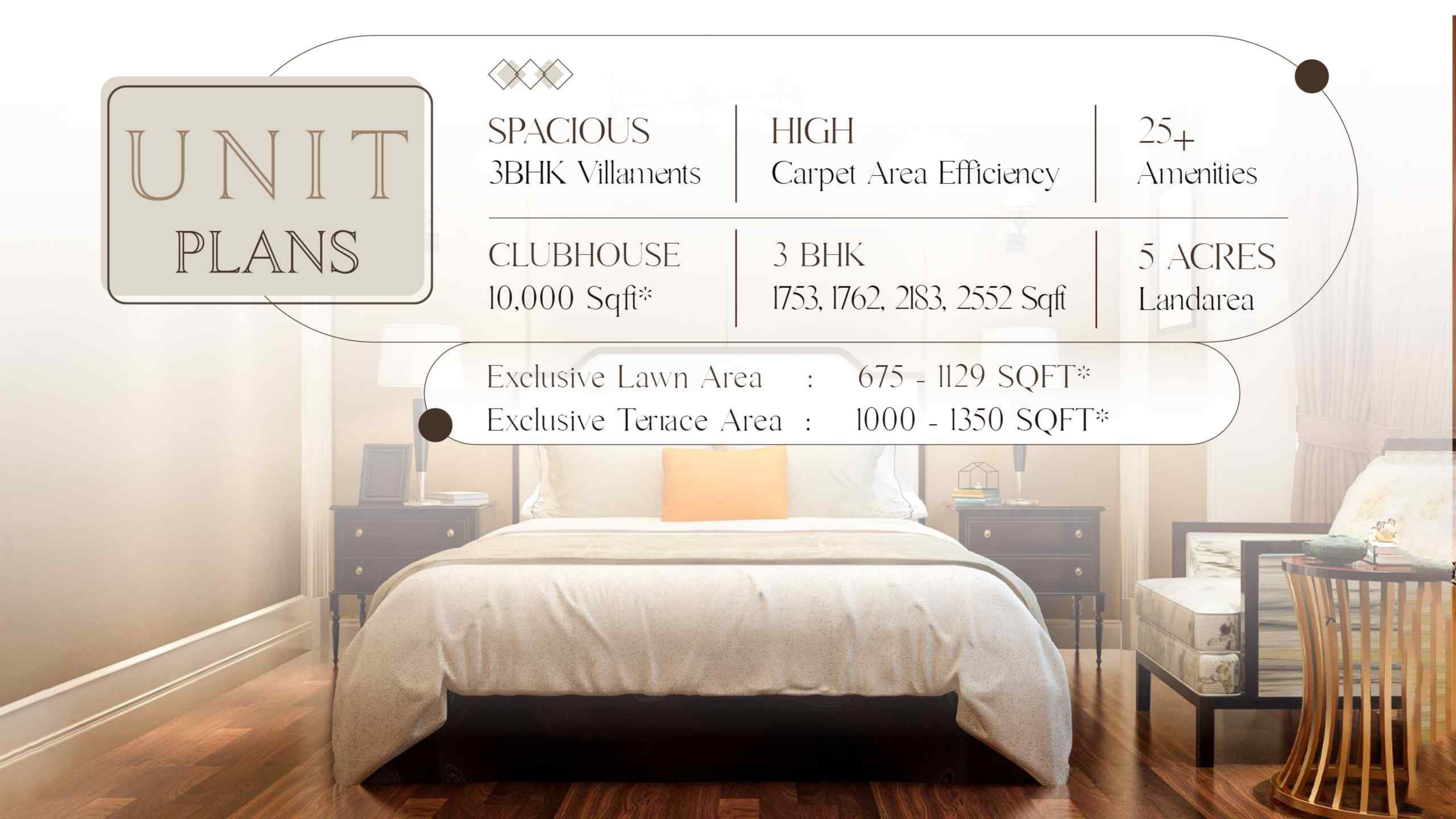
CLUBHOUSE  
10,000 Sqft\*

3 BHK  
1753, 1762, 2183, 2552 Sqft

5 ACRES  
Landarea

Exclusive Lawn Area : 675 - 1129 SQFT\*

Exclusive Terrace Area : 1000 - 1350 SQFT\*





# Master Plan



## LEGEND

- |                      |                       |                           |
|----------------------|-----------------------|---------------------------|
| 1. Main Entry        | 10. Mound Park        | 19. Court of Tranquillity |
| 2. Drop Off          | 11. Tree Court        | 20. Kids Play Area        |
| 3. Reception         | 12. Open Air Gym      | 21. Amphitheatre          |
| 4. Water Court       | 13. Skating Rink      | 22. Reflexology path      |
| 5. Party Lawn        | 14. Kids Play area    | 23. Half Basketball Court |
| 6. Yoga Lawn         | 15. Pickle ball court | 24. Service area          |
| 7. Tabebuia Court    | 16. Entrance court    | 25. Car Ramp              |
| 8. Meadow Plantation | 17. Stepped Court     | 26. Orchard               |
| 9. Butterfly Park    | 18. Sculptural Tree   | 27. Services              |





# Tower Plan

Tower - 1

Tower - 2





# Tower - 1 Plan





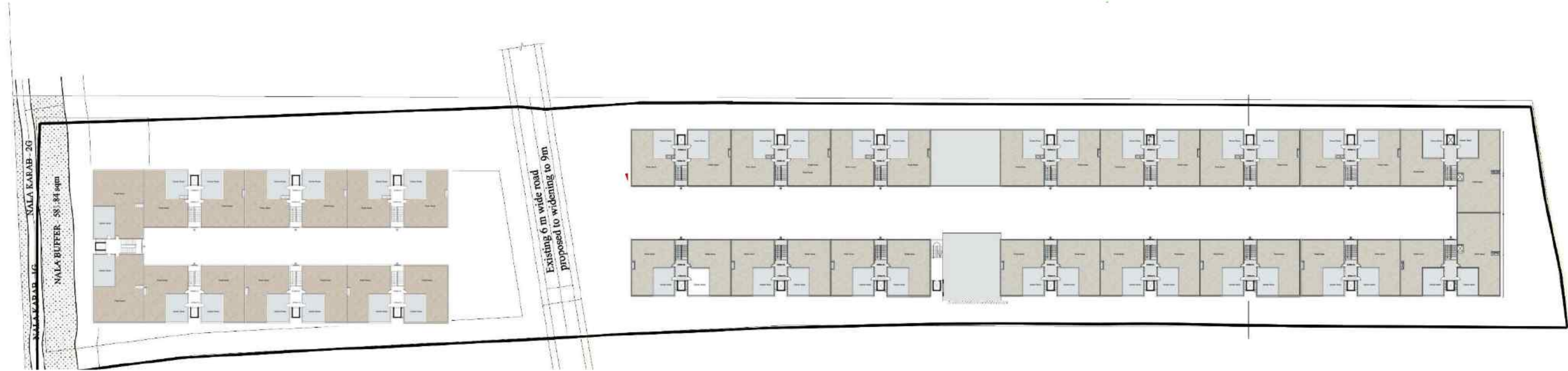
# Tower - 2

## Plan



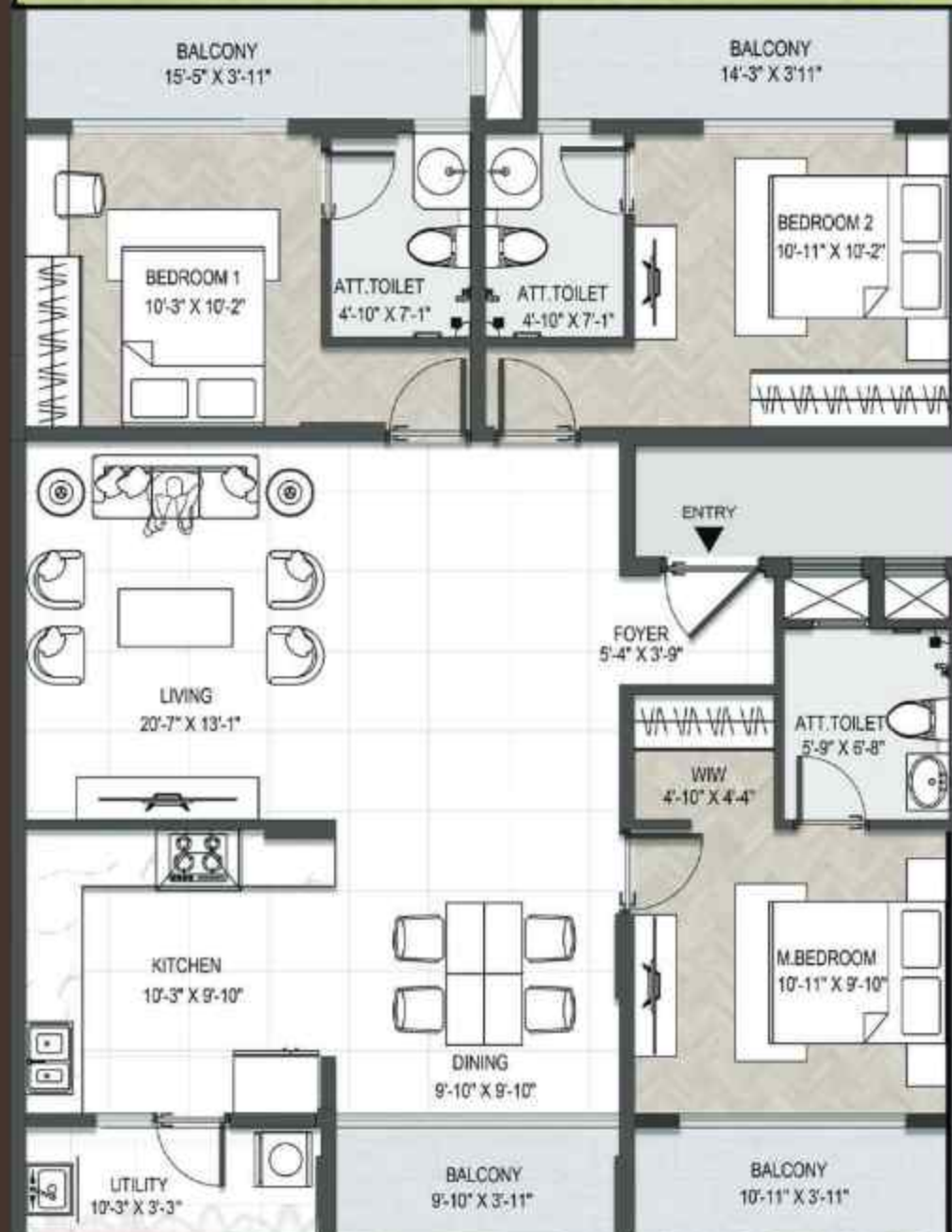


# Terrace Plan



# Type - 1

## Ground Floor Plan

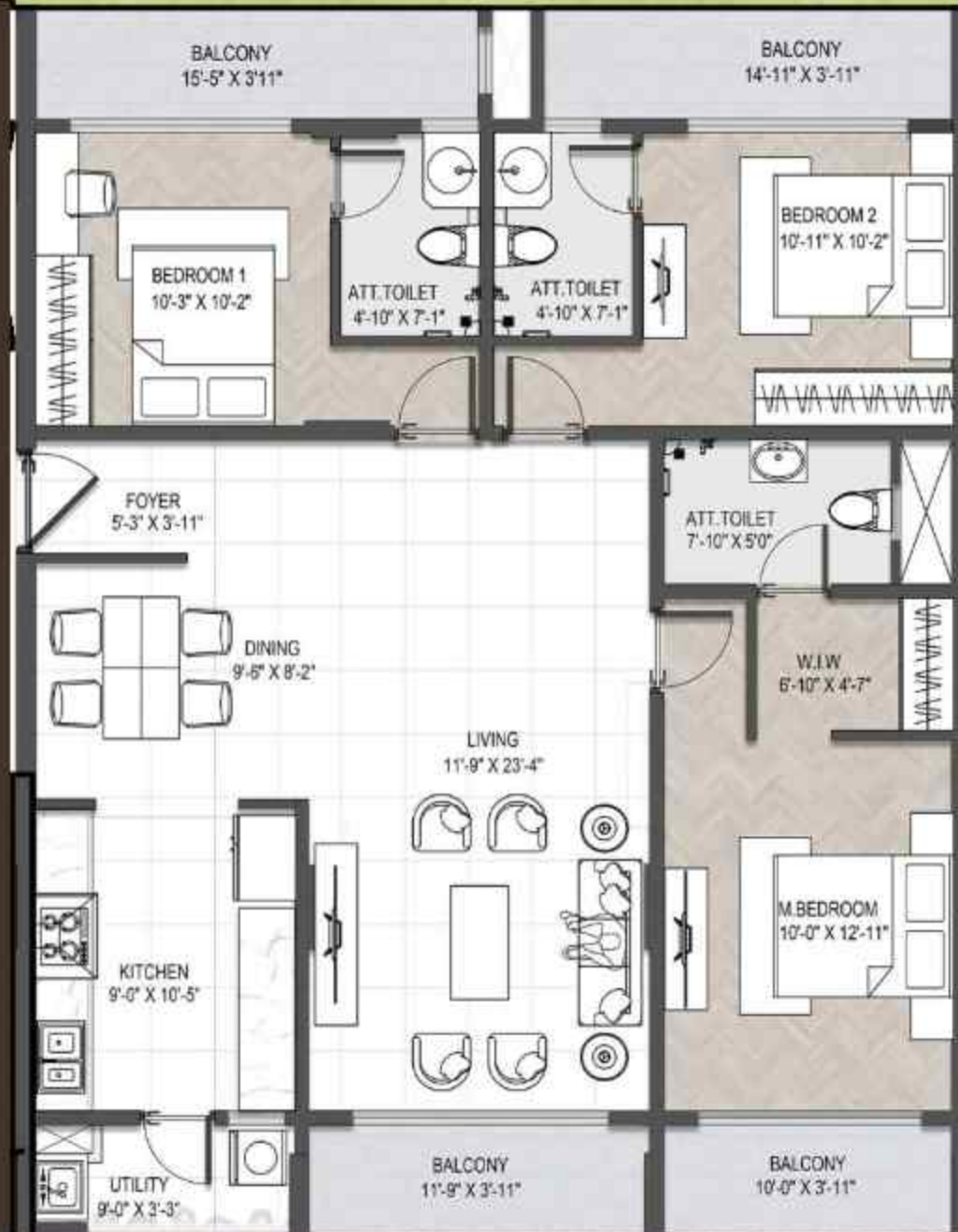


FACING	EAST
UNIT TYPE	TYPE - 01
SBUA (SQFT)	1762.87
RERA CARPET AREA (SQFT)	1056.27



# Type - 2

## Ground Floor Plan



FACING	NORTH
UNIT TYPE	TYPE - 02
SBUA (SQFT)	1752.70
RERA CARPET AREA (SQFT)	1110.89



# Type - 3

## Ground Floor Plan



FACING	EAST
UNIT TYPE	TYPE - 03
SBUA (SQFT)	1753.19
RERA CARPET AREA (SQFT)	1106.54



# Type - 4

## Ground Floor Plan



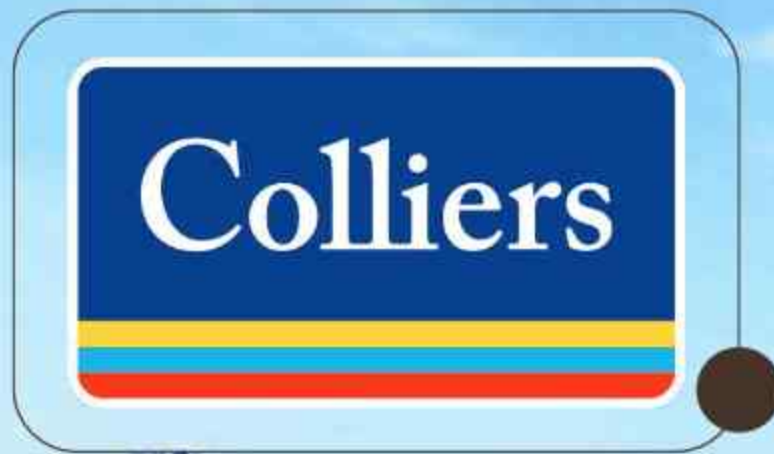
FACING	NORTH
UNIT TYPE	TYPE - 04
SBUA (SQFT)	1753.32
RERA CARPET AREA (SQFT)	1145.50





# Loaded with all Modern Amenities Designed by International Architects

Experience luxury with world-class modern amenities designed for ultimate comfort.  
Crafted by an international architect, these homes blend elegance and functionality seamlessly.





# Amenities that elevate your everyday living —

More than just conveniences,  
it's where comfort meets innovation.

1. Lawn Area
2. Club House
3. Gymnasium
4. Party Hall
5. Swimming pool
6. Kids Play Area
7. Indoor Games
8. Reception and lobby
9. Barbecue Area  
& MORE,,,





Space that inspires

Freedom you Deserve



64%  
OPEN SPACE



Exclusive Usage of

Lawn —





# Exclusive Usage of Terrace





# Sarjapur Main Road

where connectivity meets comfort —

5 ACRES

of prime residential & commercial  
development in a rapidly  
growing hub

200+

families will soon call this  
vibrant community  
their home

64% Open Space

for a greener, healthier  
living experience

## LEADING COMPANIES & INSTITUTIONS NEARBY

Infosys | Wipro | RMZ EcoWorld | RGA Tech Park | Decathlon | Manipal Hospital  
Forum Mall | Prestige Tech Park | Embassy TechVillage | Columbia Asia Hospital  
SAP Labs | Cisco | Intel | Accenture | New Horizon College



# Sarjapur:

## The Next Big Investment Destination! —



### Proposed STRR (Satellite Town Ring Road)

The upcoming STRR will enhance connectivity, linking major hubs around Bangalore and boosting real estate value in the Sarjapur region.



### Swift City in Sarjapur (1000-Acre SEZ)

A massive government-planned Special Economic Zone (SEZ) aimed at supporting startups and driving economic growth, positioning Sarjapur as a prime investment destination.



### Growing IT & Commercial Hub

Surrounded by tech parks, co-working spaces, and upcoming corporate offices, making Sarjapur a prime investment hotspot.



### Red Line Metro – Sarjapur to Hebbal (D-Mart Station)

The proposed metro extension will provide seamless public transport, improving accessibility and reducing commute times for residents and businesses.



### KIADB 647-Acre Industrial Park in Sarjapur

Karnataka Industrial Areas Development Board (KIADB) is set to establish a 647-acre industrial hub, attracting industries, creating job opportunities, and boosting local infrastructure.



### Green & Sustainable Development

Government initiatives include parks, open spaces, and eco-friendly infrastructure to enhance quality of life.





# Next-Gen

## Connectivity



Karnataka Industrial Areas Development Board (KIADB) is set to establish a 647-acre industrial hub, attracting industries, creating job opportunities, & boosting local infrastructure.



The proposed Red Line Metro from Sarjapur to Hebbal (D-Mart Station) will improve connectivity, making commutes seamless & faster.



KIADB's 647-acre industrial park in Sarjapur will drive employment and economic growth, attracting top industries & investments.



The government's 1000-acre Swift City project in Sarjapur will create a thriving startup ecosystem, fueling innovation and business expansion.



Ongoing and upcoming road, metro, and industrial developments position Sarjapur as a high-growth corridor, ensuring long-term appreciation and livability.



With a legacy of trust & design excellence,  
we redefine modern real estate

## About Inspira

20

Years of Experience

20+

Completed Projects

8+

Ongoing Projects

20+

Upcoming Projects

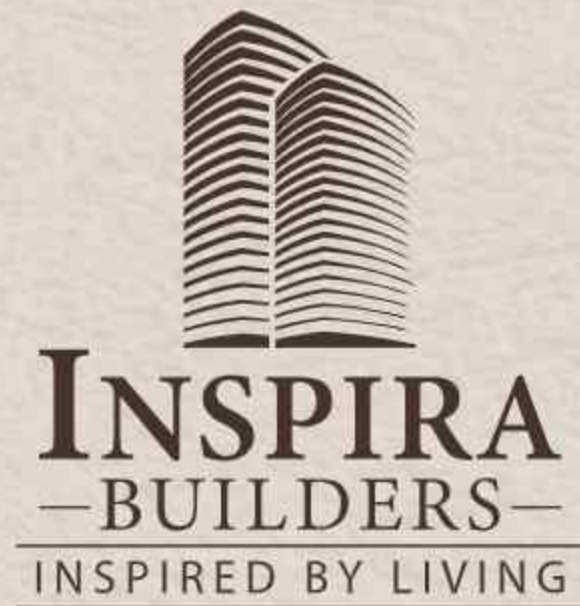
2500

Happy Families



Inspira Builders, one of Bangalore's fastest-growing real estate companies, has over 20 years of experience in real estate development, construction, and luxury interiors. Known for exceptional service, timely delivery, and top-notch workmanship, we have successfully delivered residential & commercial projects across Bangalore, Shivamogga, and Hassan.

We are coming up with Millions of SQFT of residential and commercial projects across Bangalore, thoughtfully crafted by international architects. We will be launching our IPO in the coming days.



+91 70260 03069 | [www.inspirabuilders.com](http://www.inspirabuilders.com)

Disclaimer: The Company does not guarantee or represent the accuracy of the information in this document, which is intended for general information only. Interested parties should independently verify all details, including designs, plans, specifications, facilities, features, payment schedules, and terms of sale, with the Company before making any decisions regarding purchasing a project. Users of this brochure confirm that they have not relied solely on this information for booking or purchasing any property. The visuals, renders, and creative depictions are artistic impressions and are indicative in nature, subject to change based on design, layouts, materials, site conditions, and other factors. Any furniture, paintings, or personalized items shown are for illustration purposes only and do not form part of the offering. Additionally, renders/visuals of areas beyond the project site are artistic representations and may not depict actual views. While every effort has been made to provide accurate information, the Company and its employees, managers, or representatives shall not be liable for any loss or damage, whether direct, special, or consequential, arising from the use or reliance on this brochure without independent verification. The contents are provided "as is" and "as available" with no warranties beyond those required by applicable law.