

Images are indicative. For representation only.

VIVA LA VALENCIA!
Live more. Laugh more.
Love every moment more.



24 ACRES OF RELAXED SPANISH-STYLE LIVING INSPIRED BY THE CITY OF VALENCIA.

RERA Registration No. PRM/KVRERA/125V308/PR/120123/005613 • Details available at www.rera.karnataka.gov.in

BRIGADE
Valencia
Near Electronic City, Hosur Road



**'AH, VALENCIA! SWEET, SUNNY, SUBLIME VALENCIA!
COME TO MY ARMS, MI AMOR!'**

Here you find a zesty, carefree "flow with life as it comes" spirit of Valencia that everyone loves. The sunny, colourfully bougainvillea'd streets flowing with happy folks. It's coming to be a part of your life. Get your hats on!

BRINGING A REFRESHINGLY DELIGHTFUL SPIRIT OF SPAIN TO ELECTRONIC CITY.

"VIVA LA VALENCIA!"

It's the song of Brigade Valencia.
It's a burst of emotion that's part of
every moment and experience here.

The sunsets are full of it.
It's in the laughter of kids at the pool.
In the rhythm of every joyful walk,
in the charming parks.

It's in the expanse of green that
invites a spontaneous picnic
and the sparkle in every conversation.

It's in the life you deserve
to experience every day.





SU CASA

'Viva' true homecoming!

Welcome to 'Su Casa', the endearingly Spanish expression for 'your home', where you enter your happy place, without a worry of the next day's work. Blended with modern designs and rich artistic expression for you to create a space of your own. Picasso would be proud. 85% open space includes vibrant and buzzing gardens where you can just lay your hat down, put your feet up for a siesta or just continue your walk. A range of 1, 2, 3 & 4 BHK spacious Spanish-style homes here support your most cherished dreams.





CENTER OF LIFE.

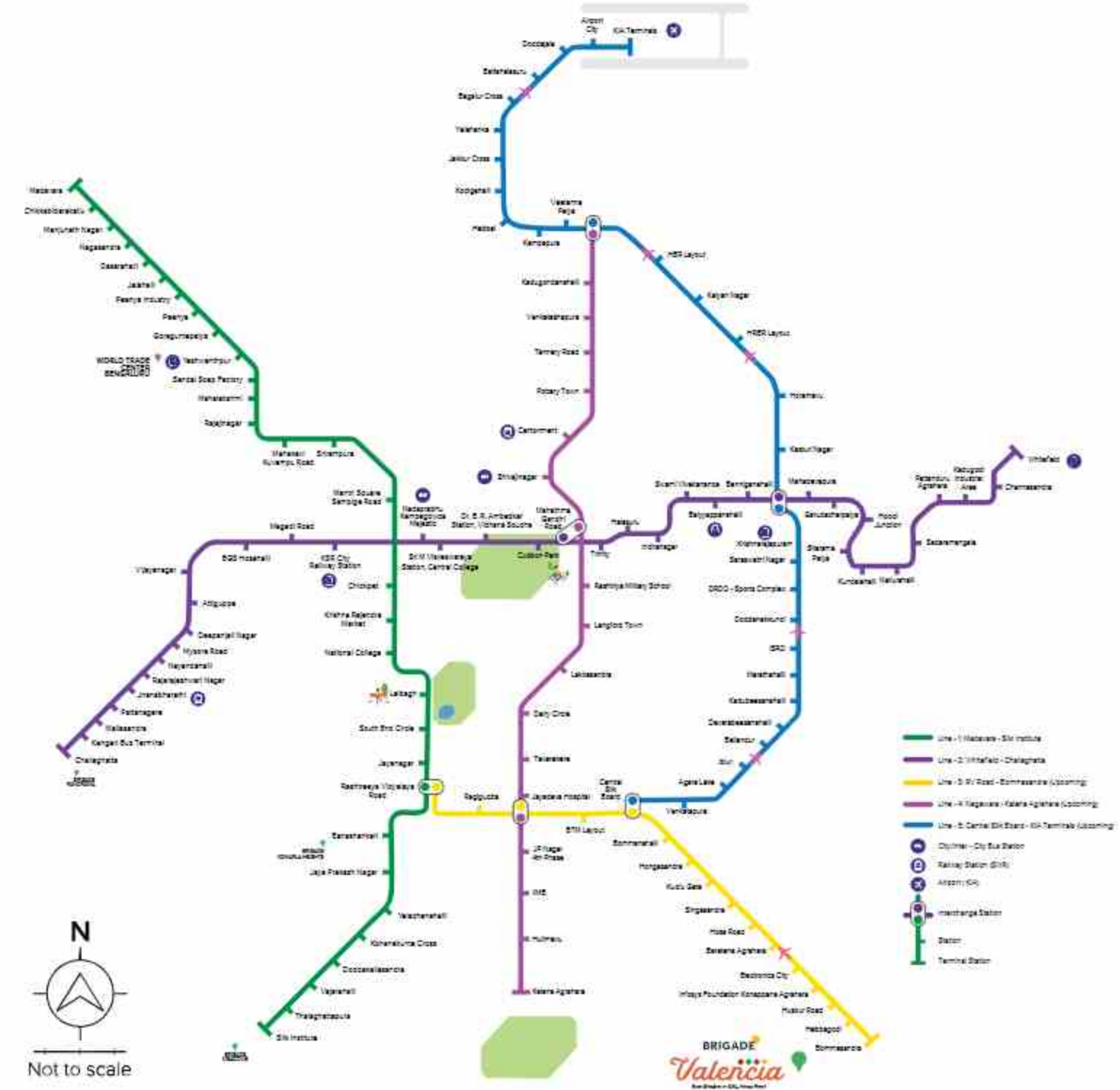
A location that brings everything to you.

Trying to reach your favourite place? Travel far and wide with the 8-lane expressway.
 Want groceries or home supplies? Just think of it as a short stroll to the supermarkets close by.
 Need medical attention? There are popular hospitals like Narayana Hrudyalaya and Mazumdar Shaw Medical Center at a close distance.

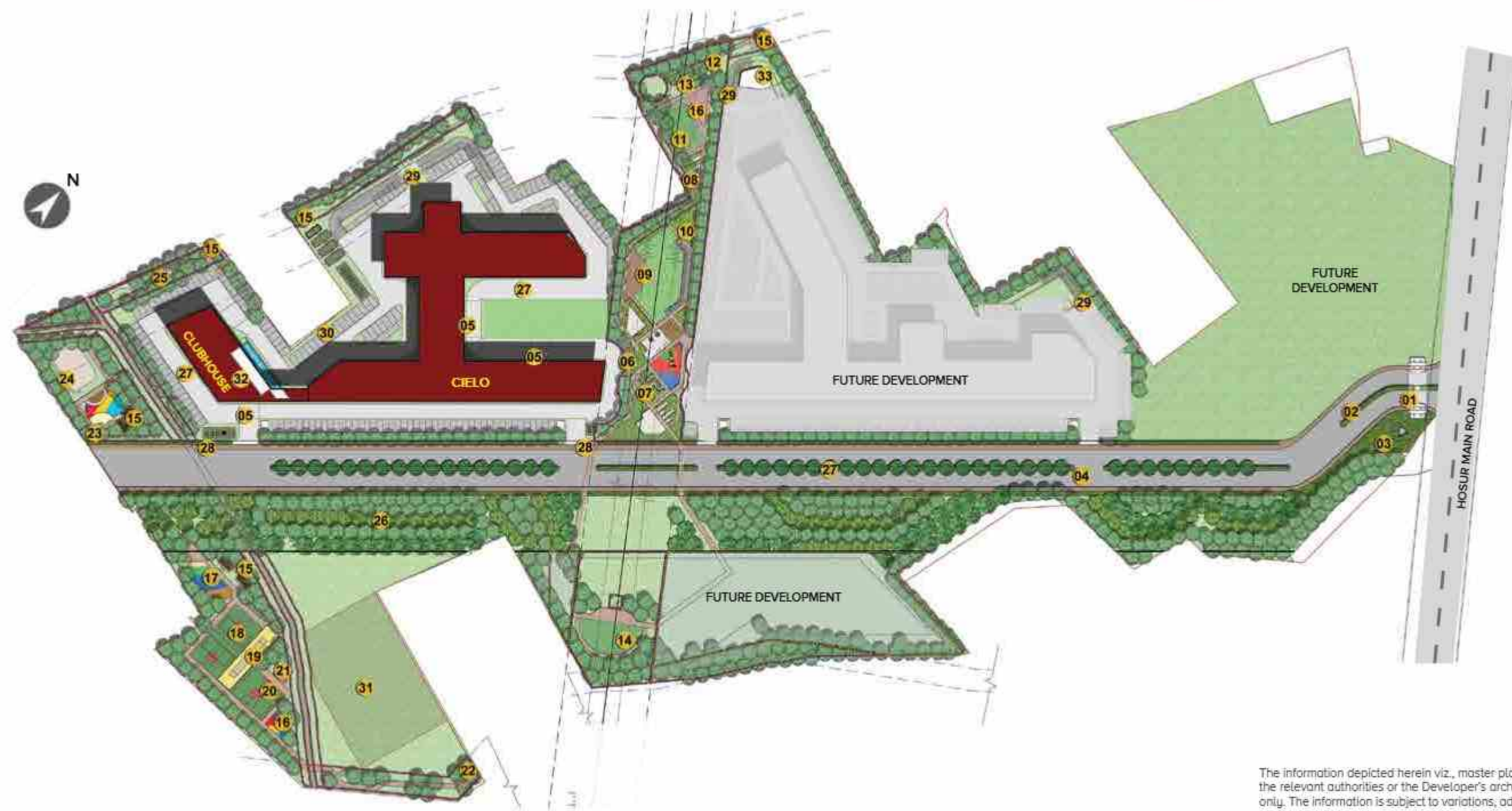
CONNECTED LIKE WOW!

Direct to the airport and pretty much every place else.

Brigade Valencia is connected to the major employment hubs, like Sarjapur Road, Koramangala and Electronic City. Also, it is just 30mins. from the NICE Road. The upcoming Bommasandra Metro Station is within walking distance. IT companies like Biocon, Infosys, Wipro, HP and HCL can be found 25mins. away in Electronic City.



MASTER PLAN



LEGEND

- | | |
|--------------------------------|-----------------------------------|
| 1. Entry & exit | 22. Pet park |
| 2. CDP road | 23. Toddlers' sand pit |
| 3. Clock tower | 24. Skating rink |
| 4. Tree-lined avenue | 25. Aroma garden |
| 5. Building drop off | 26. Temporary tree park |
| 6. Nature trail/Jogging track | 27. Driveway |
| 7. Maze garden | 28. Transformer yards |
| 8. Community garden | 29. Ramps to basement |
| 9. Gathering lawn | 30. Car parking |
| 10. Floral garden | 31. Substation |
| 11. Yoga lawn reflexology path | 32. Club house with swimming pool |
| 12. Buffer planting | 33. OWC park and open space |
| 13. Seating pod | |
| 14. Playfield | |
| 15. Pavilions | |
| 16. Outdoor gym | |
| 17. Children's play area | |
| 18. Multipurpose court | |
| 19. Cricket practice pitch | |
| 20. Dribble court | |
| 21. Stepped seating | |
- Park and open space
- Civic amenities
- Existing High tension line



The information depicted herein viz., master plans, floor plans, furniture layout, fittings, illustrations, specifications, designs, dimensions, rendered views, colours, amenities and facilities etc., are subject to change without notifications as may be required by the relevant authorities or the Developer's architect, and cannot form part of an offer or contract. Whilst every care is taken in providing this information, the Developer cannot be held liable for variations. All illustrations and pictures are artist's impressions only. The information is subject to variations, additions, deletions, substitutions and modifications as may be recommended by the company's architect and/or the relevant approving authorities. The Developer is wholly exempt from any liability on account of any claim in this regard. (1 square metre = 10.764 square feet). E & OE. All dimensions and calculations are done in metric system (M/Sq.m), and imperial system (Ft/Sq.ft) shown is for reference only. All dimensions indicated in the drawing are from unfinished surfaces, excluding plaster thickness and tile thickness.



**RELAX, WITH THE AMENITY
OF YOUR CHOICE.**
Everything more that adds to life.

You want more? We got more!
A load of amenities keep the easy life going.
Sit in the lush gardens and soak in the green
or choose the active life like skating at the rink,
practicing your defence at the cricket pitch or
choose your sport at the multipurpose court.
Too hectic?
Just float quietly in the pool then.



Artist's Impression

CLUBHOUSE FOR ALL YOUR FUN & FIESTAS.

Tired from a long day and want to do something fun? Board games are here to take your boredom away. Squash or smash away your stress at the badminton court. Sit back, relax with a coffee or burn some calories at the gym. Let your kids have some fun in the play area while you play your billiards. Oh, and plan all your fun fiestas with friends & family at the multipurpose halls.

CLUBHOUSE AMENITIES

- Entrance lobby/Reception
- Multipurpose hall
- Squash court
- Café pantry + Outdoor café*
- Children's play area
- Gym
- Pantry
- Aerobics room
- Table tennis
- Billiards
- Co-working space
- Badminton courts
- Board games, Foosball, Air hockey
- Yoga room
- Terrace
- Swimming pool & Kids pool with deck

*Space Provisioned

The information depicted herein viz., master plans, floor plans, furniture layout, fittings, illustrations, specifications, designs, dimensions, rendered views, colours, amenities and facilities etc., are subject to change without notifications as may be required by the relevant authorities or the Developer's architect, and cannot form part of an offer or contract. Whilst every care is taken in providing this information, the Developer cannot be held liable for variations. All illustrations and pictures are artist's impressions only. The information is subject to variations, additions, deletions, substitutions and modifications as may be recommended by the company's architect and/or the relevant approving authorities. The Developer is wholly exempt from any liability on account of any claim in this regard. (1 square metre = 10.764 square feet). E & OE. All dimensions and calculations are done in metric system (M/Sq.m), and imperial system (Ft/Sq.ft) shown is for reference only. All dimensions indicated in the drawing are from unfinished surfaces, excluding plaster thickness and tile thickness.



Artist's Impression

A FACADE OF DISTINCTION, INSPIRED AND DESIGNED FOR SPANISH-STYLE LIVING!

The information depicted herein viz., master plans, floor plans, furniture layout, fittings, illustrations, specifications, designs, dimensions, rendered views, colours, amenities and facilities etc., are subject to change without notifications as may be required by the relevant authorities or the Developer's architect, and cannot form part of an offer or contract. Whilst every care is taken in providing this information, the Developer cannot be held liable for variations. All illustrations and pictures are artist's impressions only. The information is subject to variations, additions, deletions, substitutions and modifications as may be recommended by the company's architect and/or the relevant approving authorities. The Developer is wholly exempt from any liability on account of any claim in this regard. (1 square metre = 10.764 square feet). E & OE. All dimensions and calculations are done in metric system (M/Sq.m), and imperial system (Ft/Sq.ft) shown is for reference only. All dimensions indicated in the drawing are from unfinished surfaces, excluding plaster thickness and tile thickness.



VAST GREEN SPACES WITH OPEN PARKS AND OPEN GYM.

The information depicted herein viz., master plans, floor plans, furniture layout, fittings, illustrations, specifications, designs, dimensions, rendered views, colours, amenities and facilities etc., are subject to change without notifications as may be required by the relevant authorities or the Developer's architect, and cannot form part of an offer or contract. Whilst every care is taken in providing this information, the Developer cannot be held liable for variations. All illustrations and pictures are artist's impressions only. The information is subject to variations, additions, deletions, substitutions and modifications as may be recommended by the company's architect and/or the relevant approving authorities. The Developer is wholly exempt from any liability on account of any claim in this regard. (1 square metre = 10.764 square feet). E & OE. All dimensions and calculations are done in metric system (M/Sq.m), and imperial system (Ft/Sq.ft) shown is for reference only. All dimensions indicated in the drawing are from unfinished surfaces, excluding plaster thickness and tile thickness.



THE RISING VIEW AND THE ACTIVE LIFE AT THE OUTDOOR COURTS.

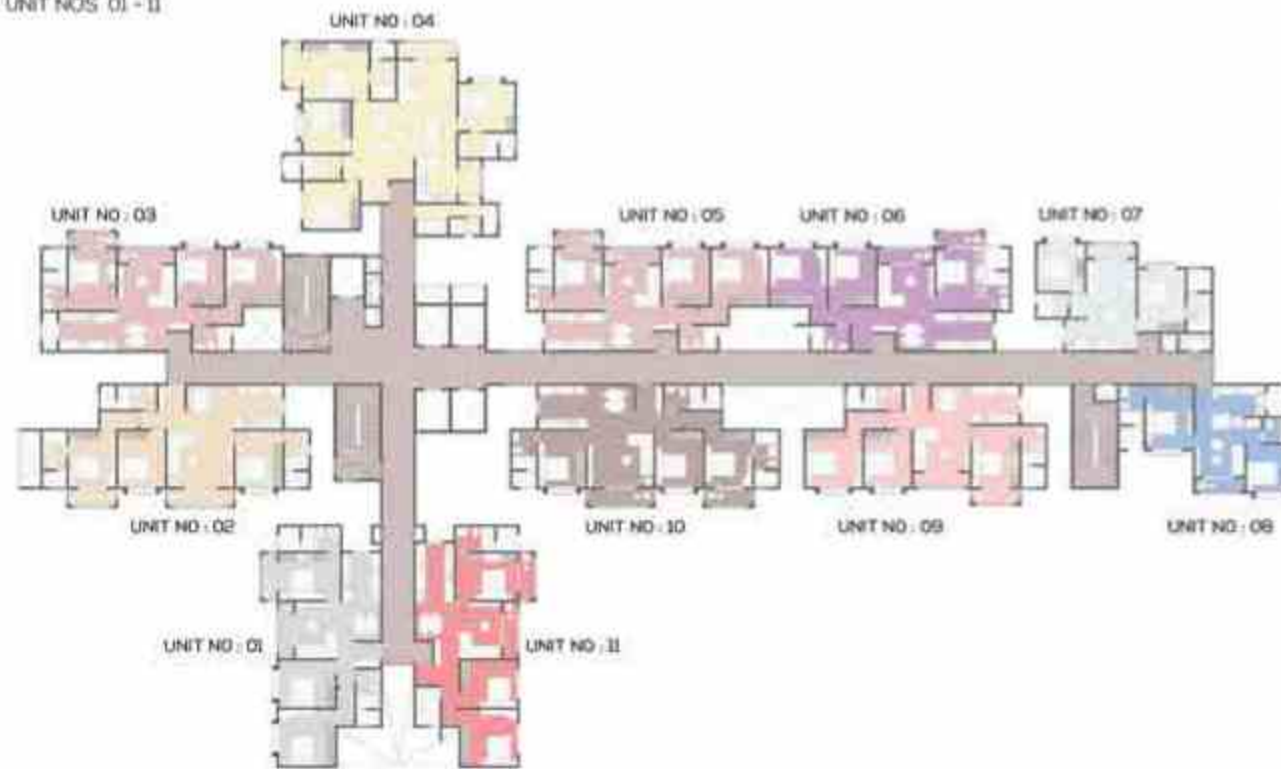
The information depicted herein viz., master plans, floor plans, furniture layout, fittings, illustrations, specifications, designs, dimensions, rendered views, colours, amenities and facilities etc., are subject to change without notifications as may be required by the relevant authorities or the Developer's architect, and cannot form part of an offer or contract. Whilst every care is taken in providing this information, the Developer cannot be held liable for variations. All illustrations and pictures are artist's impressions only. The information is subject to variations, additions, deletions, substitutions and modifications as may be recommended by the company's architect and/or the relevant approving authorities. The Developer is wholly exempt from any liability on account of any claim in this regard. (1 square metre = 10.764 square feet). E & OE. All dimensions and calculations are done in metric system (M/Sq.m), and imperial system (Ft/Sq.ft) shown is for reference only. All dimensions indicated in the drawing are from unfinished surfaces, excluding plaster thickness and tile thickness.



FLOOR PLAN - CIELO AT BRIGADE VALENCIA

CLUSTER - C

TYPICAL FLOOR
WING - A
UNIT NOS 01 - 11



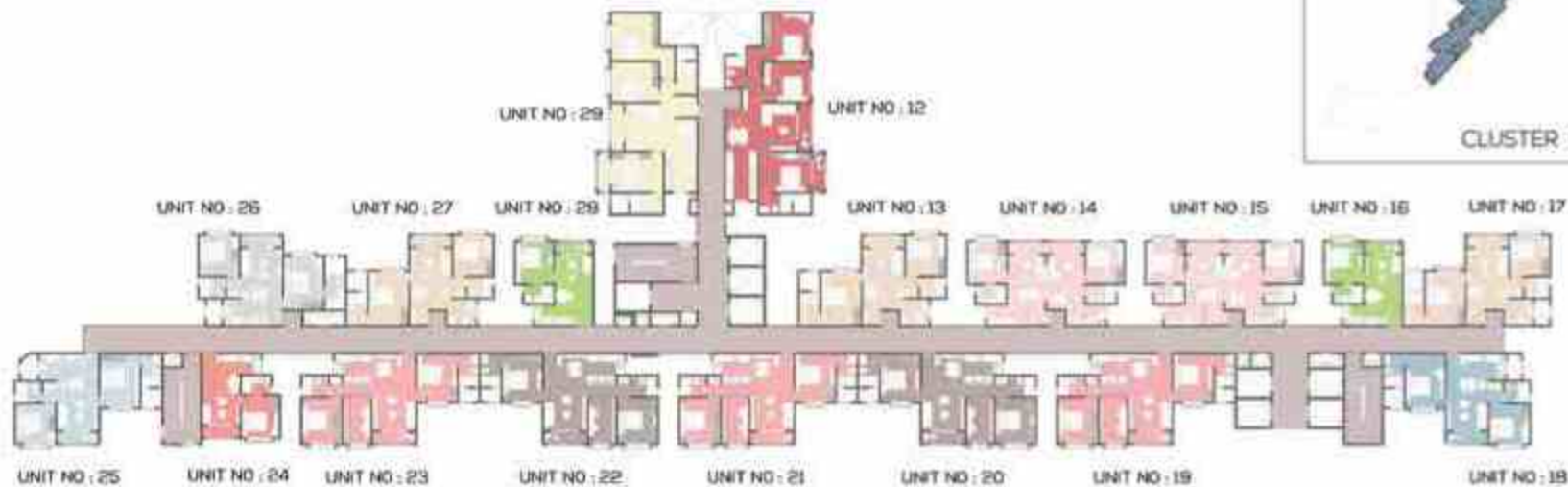
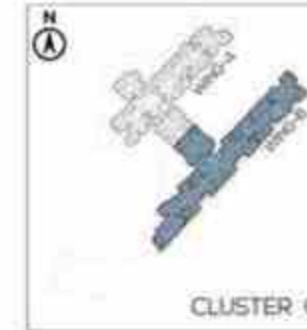
UNIT SERIES	01	02	03 05	04	06	07	08	09	10	11
	3BHK 2T TYPE 1B	3BHK 3T TYPE 1B	3BHK 2T TYPE 3A	4BHK 3T +MAID'S ROOM	3BHK 2T TYPE 2A	2BHK 2T TYPE 3	2BHK 2T TYPE 1A	3BHK 2T TYPE 1A	3BHK 3T TYPE 1A	3BHK 2T TYPE 2B
	136.96 SQ.M 1474 SQ.FT	155.98 SQ.M 1678 SQ.FT	127.34 SQ.M 1378 SQ.FT	211.47 SQ.M 2276 SQ.FT	139.17 SQ.M 1498 SQ.FT	93.7 SQ.M 966 SQ.FT	89.59 SQ.M 964 SQ.FT	136.96 SQ.M 1474 SQ.FT	155.98 SQ.M 1678 SQ.FT	139.17 SQ.M 1498 SQ.FT



The information depicted herein viz., master plans, floor plans, furniture layout, fittings, illustrations, specifications, designs, dimensions, rendered views, colours, amenities and facilities etc., are subject to change without notifications as may be required by the relevant authorities or the Developer's architect, and cannot form part of an offer or contract. Whilst every care is taken in providing this information, the Developer cannot be held liable for variations. All illustrations and pictures are artist's impressions only. The information is subject to variations, additions, deletions, substitutions and modifications as may be recommended by the company's architect and/or the relevant approving authorities. The Developer is wholly exempt from any liability on account of any claim in this regard. (1 square metre = 10.764 square feet). E & OE. All dimensions and calculations are done in metric system (M/Sq.m), and imperial system (Ft/Sq.ft) shown is for reference only. All dimensions indicated in the drawing are from unfinished surfaces, excluding plaster thickness and tile thickness.

FLOOR PLAN - CIELO AT BRIGADE VALENCIA

CLUSTER - C
 TYPICAL FLOOR
 WING - B
 UNIT NOS 12 - 29



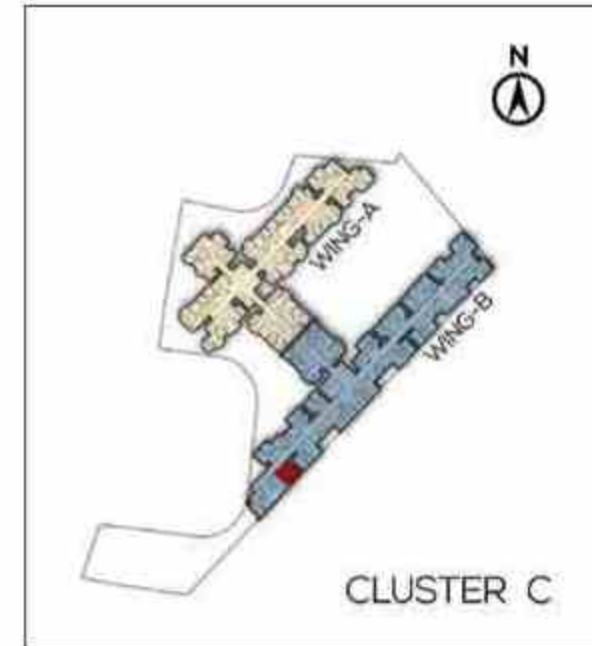
UNIT SERIES:	3BHK 2T TYPE 3B	2BHK 2T TYPE 2	2BHK 2T STUDY TYPE 1	1BHK TYPE 1A	2BHK 2T TYPE 1A	2BHK 2T STUDY TYPE 2A	2BHK 2T STUDY TYPE 2B	1BHK TYPE 1B	2BHK 2T TYPE 1B	2BHK 2T TYPE 3	3BHK 2T TYPE 1C
	12	13 17 27	14 15	18 28	18	20 21 22	20 22	24	25	26	29
	137.34 SQ.M 1479 SQ.FT	89.10 SQ.M 959 SQ.FT	106.89 SQ.M 1148 SQ.FT	54.40 SQ.M 586 SQ.FT	89.59 SQ.M 964 SQ.FT	111.59 SQ.M 1201 SQ.FT	111.59 SQ.M 1201 SQ.FT	54.40 SQ.M 586 SQ.FT	89.59 SQ.M 964 SQ.FT	89.7 SQ.M 966 SQ.FT	136.96 SQ.M 1474 SQ.FT

The information depicted herein viz., master plans, floor plans, furniture layout, fittings, illustrations, specifications, designs, dimensions, rendered views, colours, amenities and facilities etc., are subject to change without notifications as may be required by the relevant authorities or the Developer's architect, and cannot form part of an offer or contract. Whilst every care is taken in providing this information, the Developer cannot be held liable for variations. All illustrations and pictures are artist's impressions only. The information is subject to variations, additions, deletions, substitutions and modifications as may be recommended by the company's architect and/or the relevant approving authorities. The Developer is wholly exempt from any liability on account of any claim in this regard. (1 square metre = 10.764 square feet). E & OE. All dimensions and calculations are done in metric system (M/Sq.m), and imperial system (Ft/Sq.ft) shown is for reference only. All dimensions indicated in the drawing are from unfinished surfaces, excluding plaster thickness and tile thickness.

UNIT PLAN - CIELO AT BRIGADE VALENCIA

1 BHK 1T-TYPE 1B

C 0024 - C 2224



SUPER BUILT-UP AREA

54.40 Sq.m / 586 Sq.ft

UNIT CARPET AREA

31.77 Sq.m / 342 Sq.ft

BALCONY AREA

2.42 Sq.m / 26 Sq.ft

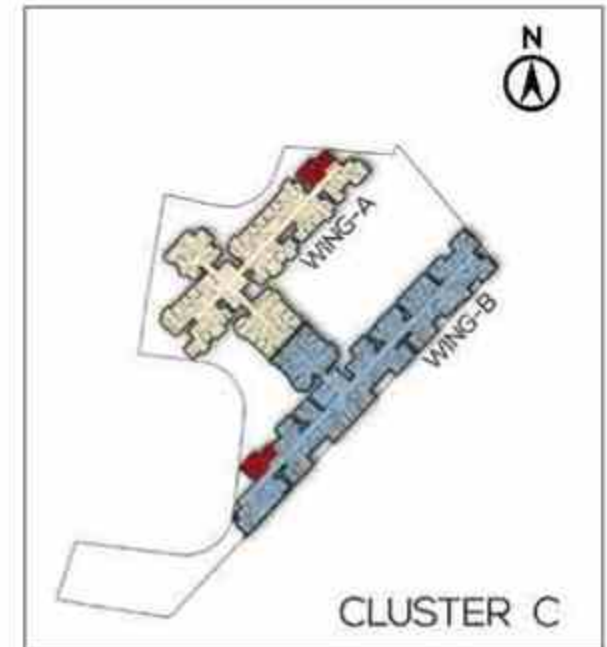
The information depicted herein viz., master plans, floor plans, furniture layout, fittings, illustrations, specifications, designs, dimensions, rendered views, colours, amenities and facilities etc., are subject to change without notifications as may be required by the relevant authorities or the Developer's architect, and cannot form part of an offer or contract. Whilst every care is taken in providing this information, the Developer cannot be held liable for variations. All illustrations and pictures are artist's impressions only. The information is subject to variations, additions, deletions, substitutions and modifications as may be recommended by the company's architect and/or the relevant approving authorities. The Developer is wholly exempt from any liability on account of any claim in this regard. (1 square metre = 10.764 square feet). E & OE. All dimensions and calculations are done in metric system (M/Sq.m), and imperial system (Ft/Sq.ft) shown is for reference only. All dimensions indicated in the drawing are from unfinished surfaces, excluding plaster thickness and tile thickness.

UNIT PLAN - CIELO AT BRIGADE VALENCIA

2 BHK 2T-TYPE 3

C 0007 - 2207

C 0026 - 2226



SUPER BUILT-UP AREA

89.7 Sq.m / 966 Sq.ft

UNIT CARPET AREA

54.19 Sq.m / 583 Sq.ft

BALCONY AREA

2.68 Sq.m / 29 Sq.ft

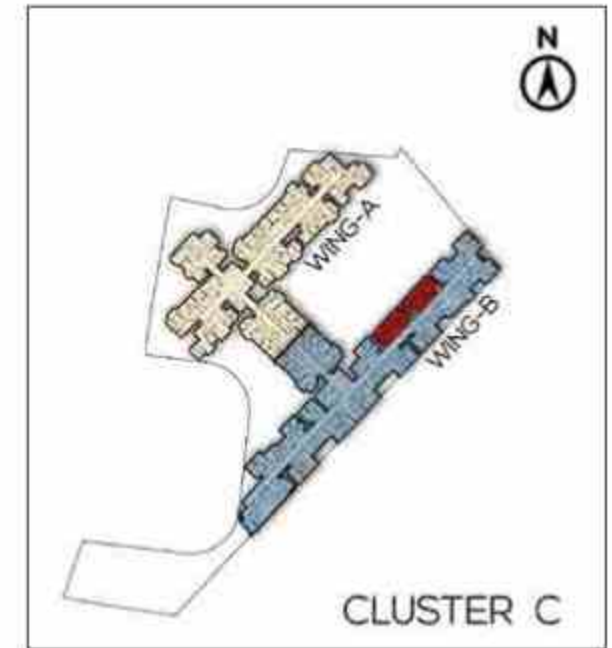
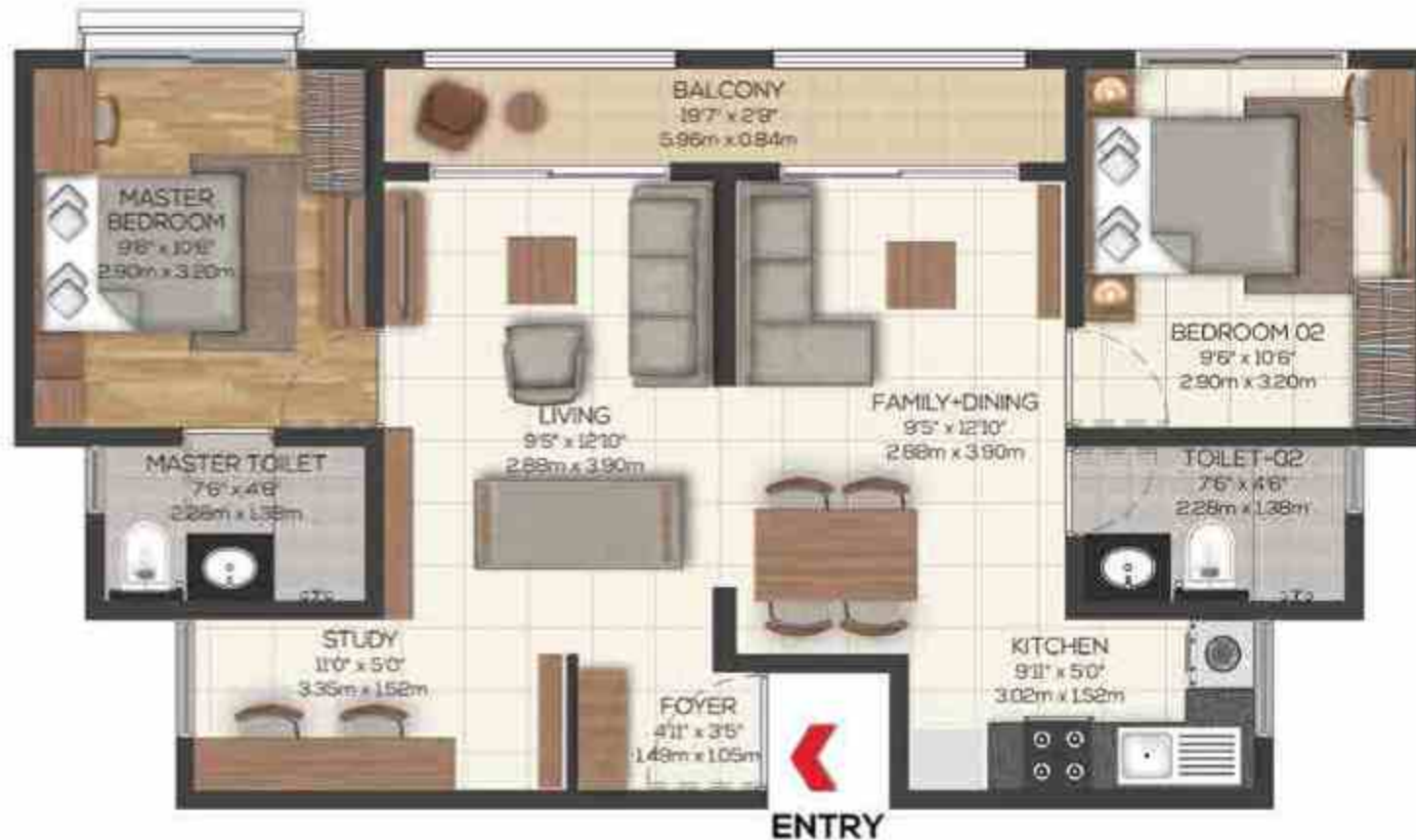
The information depicted herein viz., master plans, floor plans, furniture layout, fittings, illustrations, specifications, designs, dimensions, rendered views, colours, amenities and facilities etc., are subject to change without notifications as may be required by the relevant authorities or the Developer's architect, and cannot form part of an offer or contract. Whilst every care is taken in providing this information, the Developer cannot be held liable for variations. All illustrations and pictures are artist's impressions only. The information is subject to variations, additions, deletions, substitutions and modifications as may be recommended by the company's architect and/or the relevant approving authorities. The Developer is wholly exempt from any liability on account of any claim in this regard. (1 square metre = 10.764 square feet). E & OE. All dimensions and calculations are done in metric system (M/Sq.m), and imperial system (Ft/Sq.ft) shown is for reference only. All dimensions indicated in the drawing are from unfinished surfaces, excluding plaster thickness and tile thickness.

UNIT PLAN - CIELO AT BRIGADE VALENCIA

2 BHK 2T STUDY-TYPE 1

C 0014 - 2214

C 0115 - 2215



SUPER BUILT-UP AREA

106.69 Sq.m / 1148 Sq.ft

UNIT CARPET AREA

62.98 Sq.m / 678 Sq.ft

BALCONY AREA

5.00 Sq.m / 54 Sq.ft

The information depicted herein viz., master plans, floor plans, furniture layout, fittings, illustrations, specifications, designs, dimensions, rendered views, colours, amenities and facilities etc., are subject to change without notifications as may be required by the relevant authorities or the Developer's architect, and cannot form part of an offer or contract. Whilst every care is taken in providing this information, the Developer cannot be held liable for variations. All illustrations and pictures are artist's impressions only. The information is subject to variations, additions, deletions, substitutions and modifications as may be recommended by the company's architect and/or the relevant approving authorities. The Developer is wholly exempt from any liability on account of any claim in this regard. (1 square metre = 10.764 square feet). E & OE. All dimensions and calculations are done in metric system (M/Sq.m), and imperial system (Ft/Sq.ft) shown is for reference only. All dimensions indicated in the drawing are from unfinished surfaces, excluding plaster thickness and tile thickness.

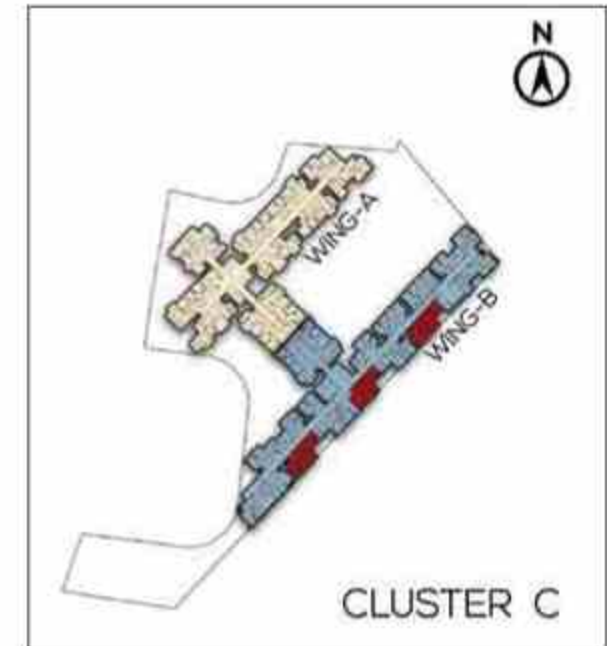
UNIT PLAN - CIELO AT BRIGADE VALENCIA

2 BHK 2T STUDY-TYPE 2A

C 0019 - 2219

C 0021 - 2221

C 0023 - 2223



SUPER BUILT-UP AREA

111.59 Sq.m / 1201 Sq.ft

UNIT CARPET AREA

68.96 Sq.m / 742 Sq.ft

BALCONY AREA

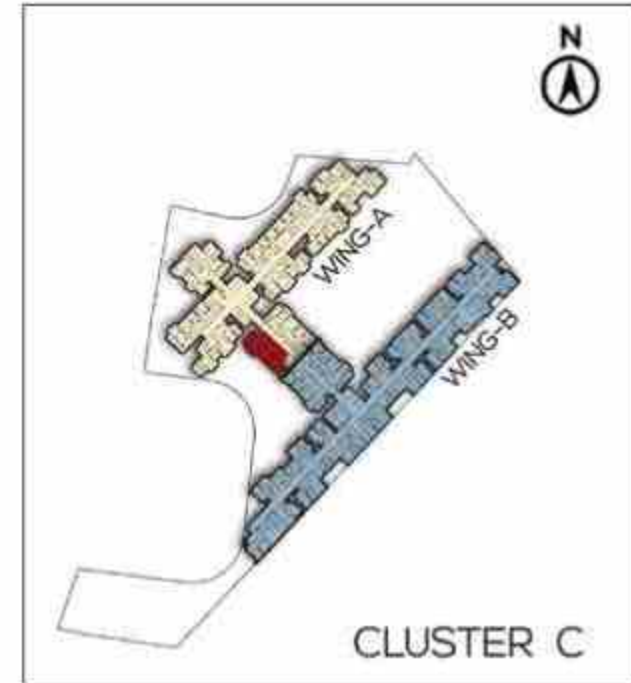
2.8 Sq.m / 30 Sq.ft

The information depicted herein viz., master plans, floor plans, furniture layout, fittings, illustrations, specifications, designs, dimensions, rendered views, colours, amenities and facilities etc., are subject to change without notifications as may be required by the relevant authorities or the Developer's architect, and cannot form part of an offer or contract. Whilst every care is taken in providing this information, the Developer cannot be held liable for variations. All illustrations and pictures are artist's impressions only. The information is subject to variations, additions, deletions, substitutions and modifications as may be recommended by the company's architect and/or the relevant approving authorities. The Developer is wholly exempt from any liability on account of any claim in this regard. (1 square metre = 10.764 square feet). E & OE. All dimensions and calculations are done in metric system (M/Sq.m), and imperial system (Ft/Sq.ft) shown is for reference only. All dimensions indicated in the drawing are from unfinished surfaces, excluding plaster thickness and tile thickness.

UNIT PLAN - CIELO AT BRIGADE VALENCIA

3 BHK 2T-TYPE 1B

C 0001 - 2201



SUPER BUILT-UP AREA
136.96 Sq.m / 1474 Sq.ft

UNIT CARPET AREA
81.75 Sq.m / 880 Sq.ft

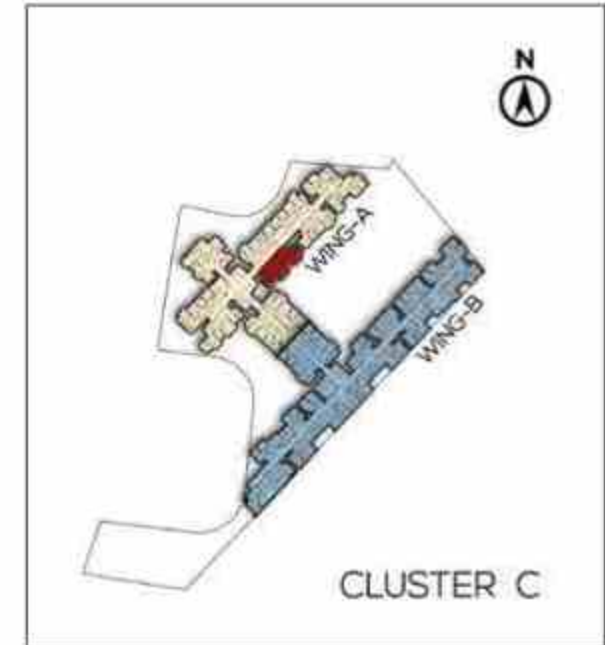
BALCONY AREA
6.12 Sq.m / 66 Sq.ft

The information depicted herein viz., master plans, floor plans, furniture layout, fittings, illustrations, specifications, designs, dimensions, rendered views, colours, amenities and facilities etc., are subject to change without notifications as may be required by the relevant authorities or the Developer's architect, and cannot form part of an offer or contract. Whilst every care is taken in providing this information, the Developer cannot be held liable for variations. All illustrations and pictures are artist's impressions only. The information is subject to variations, additions, deletions, substitutions and modifications as may be recommended by the company's architect and/or the relevant approving authorities. The Developer is wholly exempt from any liability on account of any claim in this regard. (1 square metre = 10.764 square feet). E & OE. All dimensions and calculations are done in metric system (M/Sq.m), and imperial system (Ft/Sq.ft) shown is for reference only. All dimensions indicated in the drawing are from unfinished surfaces, excluding plaster thickness and tile thickness.

UNIT PLAN - CIELO AT BRIGADE VALENCIA

3 BHK 3T-TYPE 1A

C 0010 - 2210



SUPER BUILT-UP AREA
155.86 Sq.m / 1678 Sq.ft

UNIT CARPET AREA
92.22 Sq.m / 993 Sq.ft

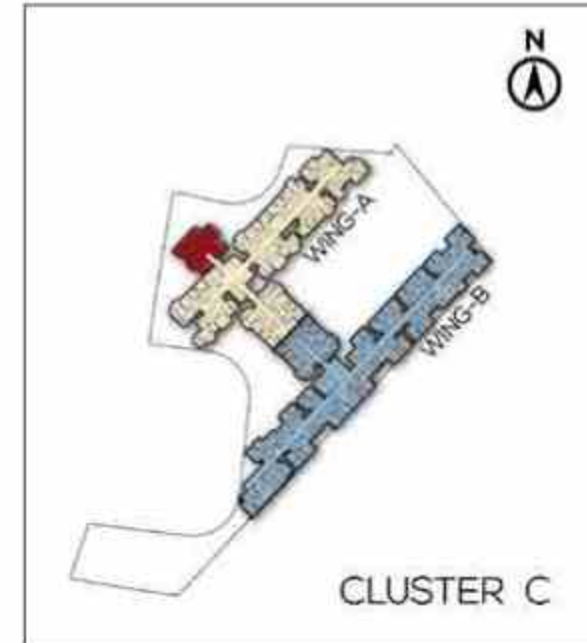
BALCONY AREA
7.79 Sq.m / 84 Sq.ft

The information depicted herein viz., master plans, floor plans, furniture layout, fittings, illustrations, specifications, designs, dimensions, rendered views, colours, amenities and facilities etc., are subject to change without notifications as may be required by the relevant authorities or the Developer's architect, and cannot form part of an offer or contract. Whilst every care is taken in providing this information, the Developer cannot be held liable for variations. All illustrations and pictures are artist's impressions only. The information is subject to variations, additions, deletions, substitutions and modifications as may be recommended by the company's architect and/or the relevant approving authorities. The Developer is wholly exempt from any liability on account of any claim in this regard. (1 square metre = 10.764 square feet). E & OE. All dimensions and calculations are done in metric system (M/Sq.m), and imperial system (Ft/Sq.ft) shown is for reference only. All dimensions indicated in the drawing are from unfinished surfaces, excluding plaster thickness and tile thickness.

UNIT PLAN - CIELO AT BRIGADE VALENCIA

4 BHK 3T + MAID ROOM

C 0004 - 2204



SUPER BUILT-UP AREA
211.47 Sq.m / 2276 Sq.ft

UNIT CARPET AREA
130.28 Sq.m / 1,402 Sq.ft

BALCONY AREA
6.94 Sq.m / 75 Sq.ft

The information depicted herein viz., master plans, floor plans, furniture layout, fittings, illustrations, specifications, designs, dimensions, rendered views, colours, amenities and facilities etc., are subject to change without notifications as may be required by the relevant authorities or the Developer's architect, and cannot form part of an offer or contract. Whilst every care is taken in providing this information, the Developer cannot be held liable for variations. All illustrations and pictures are artist's impressions only. The information is subject to variations, additions, deletions and modifications as may be recommended by the company's architect and/or the relevant approving authorities. The Developer is wholly exempt from any liability on account of any claim in this regard. (1 square metre = 10.764 square feet). E & OE. All dimensions and calculations are done in metric system (M/Sq.m), and imperial system (F/Sq.ft) shown is for reference only. All dimensions indicated in the drawing are from unfinished surfaces, excluding plaster thickness and tile thickness.



SPECIFICATIONS

COMMON AREA FLOORING

Waiting Lounge/Reception/GF Lobby/

Lift Lobby: Granite/Vitrified

Staircases: Cement Step Tiles

Other Lift Lobby and Corridors (Upper): Vitrified tiles/Industrial tiles

Terrace: Clay tiles

UNIT FLOORING

Living/Dining/Family/Foyer/Bedrooms/Kitchen/

Utility: Vitrified tiles

Balcony: Anti skid ceramic tiles

Toilets: Anti skid ceramic tiles

Maid's Room and Toilet: Ceramic tiles

WALL DADO

Kitchen: Provision for modular kitchen (no granite slab/no dado will be provided)

Toilet: Ceramic tile

PAINTING & FINISHES

Exterior Finish: External grade emulsion. Emulsion over texture paint in certain areas.

Unit Internal Ceilings: Oil bound distemper/Acrylic Emulsion paint

Unit Walls: Acrylic Emulsion paint

KITCHEN

Counter: Provision for modular kitchen (No Counter will be provided)

Plumbing/Electrical:

Plumbing: Water Inlet/Drain Provision for Water Purifier/Sink and Washing Machine. Dishwasher provision for all units except 1 & 2 BHKs.

Electrical: Points provision for Hob, Chimney, Refrigerator, Mixer/grinder, Microwave, Water Purifier, Washing Machine. Dishwasher provision for all units except 1 & 2 BHKs

DOORS

Main Door: Hardwood frame with Veneer flush shutter

Internal Doors: Hardwood frame with Laminate flush shutter

Balcony Door: UPVC/Aluminium with bug screen

WINDOWS

UPVC/Aluminium with bug screen

TOILETS

CP Fittings: Jaquar/Ess Ess or equivalent

Sanitary Fixtures: Wall mounted EWC (Jaquar/Parryware/Hindware/equivalent)

ELECTRICAL (APARTMENTS)

- 1 BHK: 3 kW
- 2 BHK & 2 BHK + Study: 4 kW
- 3 BHK 2T: 5 kW
- 3 BHK 3T: 6 kW
- 4 BHK: 8 kW

Switches: Modular switches - Anchor Roma or equivalent make

DG BACKUP

100% DG backup for Common Areas

50% backup for units

VERTICAL TRANSPORTATION

Lifts provided as per design

SECURITY SYSTEM & AUTOMATION

CCTV Provision for Security Room at Cluster Entrance and Entry/Exit points of Clusters at Stilt Lobby



MULTIPLE DOMAINS. SINGLE-MINDED COMMITMENT.

The Brigade Group is one of India's leading property developers with over three decades of expertise in building positive experiences for all stakeholders. Instituted in 1986, the company has developed many landmark buildings and transformed the skyline of cities across South India, namely – Bengaluru, Mysuru, Mangaluru, Chikmagalur, Hyderabad, Chennai, Kochi, and GIFT City, Gandhinagar with developments across the Residential, Commercial, Retail, Hospitality and Education sectors. Since its inception, Brigade has completed 250+ buildings amounting to over 76 million sq. ft. of developed space across a diverse real estate portfolio.

Brigade assures best-in-class design and top-of-the-line facilities that exude elegance and sophistication. The Residential developments include villas, villaments, penthouses, premium residences, luxury apartments, value homes, urban studios, independent living for seniors and mixed-use lifestyle enclaves, plotted developments and townships. Over the years, the projects have been one-of-a-kind in the sector, for example, Brigade developed Brigade Gateway, Bengaluru's first lifestyle enclave and Brigade Exotica, one of the tallest residential buildings in Bengaluru.

Brigade is among the few developers that also enjoys a reputation of developing Grade A Commercial properties. The license owners of the World Trade Center across South India, the Group's commercial spaces have top international clients operating out of them. Brigade also entered the co-working space with 'BuzzWorks' in March 2019. The commercial segment has seen consistent growth over the last few years with over 5 million sq.ft. of office spaces under development.

Brigade Retail's first venture was the iconic, world-class Orion Mall at Brigade Gateway, subsequently expanding with Orion Avenue and Orion Uptown. Brigade's Hospitality offerings include star hotels, recreational clubs, convention centres and The Baking Company, a unique patisserie.

Brigade is the founder of The Indian Music Experience (IME) – a monumental and philanthropic initiative that is India's only hi-tech interactive music museum. It was conceived to give back to society and sensitise the present generation to the rich culture of Indian music. The Group contributes in numerous ways towards community development, health, education, and the environment. Through the Brigade Foundation, the brand has successfully opened three schools in its name, offering holistic education; has conducted large-scale tree plantation drives; spruced up parts of the city; revived public recreational spots like lakes and parks, to name a few.

Brigade Real Estate Accelerator Program (REAP), Asia's first startup accelerator program, is a prelude to the changing trends in the real estate industry, which is standing on the cusp of disruption. REAP brings along innovators and inventors to use technology as a catalyst for creating sustainable and scalable businesses in the real estate industry.

'Great Place to Work Institute' has rated the Brigade Group as one of India's best companies to work for in the real estate industry. This responsible attitude and innovative mindset combined with the uncompromising quality of the projects over the years has created a brand of outstanding repute.

For more information, please visit www.brigadegroup.com

**Apartments
Villas
Integrated Enclaves
Senior Living**



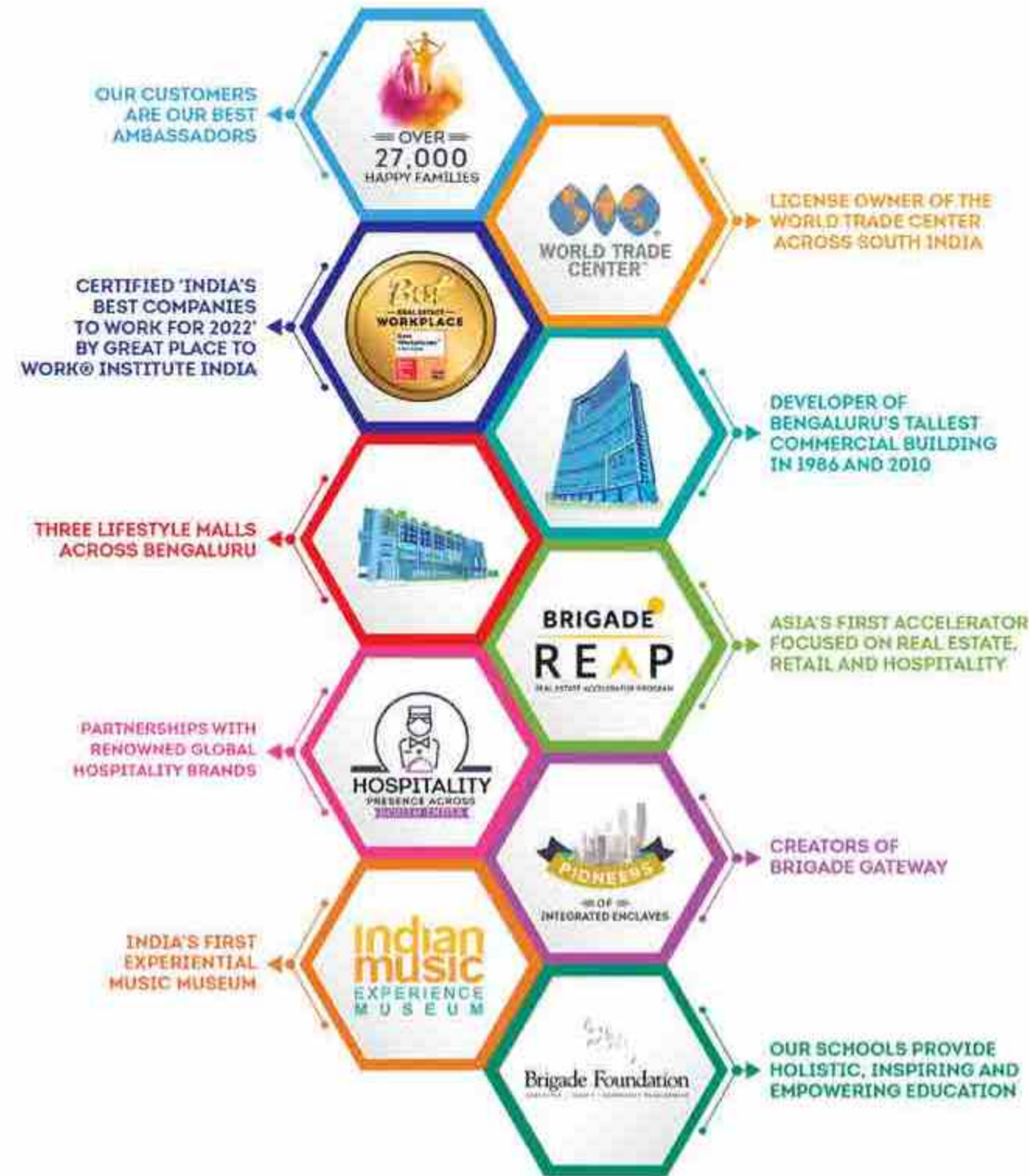
**Clubs
Hotels
Convention Centres
Schools**



**Offices
Retail Spaces**



WORLD OF BRIGADE



AWARDS & ACCOLADES

Brigade Group

Recognized as one of 'India's Top Builders - National Category' at the Construction World Architect and Builder Awards (CWAB) 2022

Brigade Group

Recognized as one of the best companies to work for in the real estate industry consistently by the 'Great Place to Work' institute

M R Jaishankar

Recognized as 'Realty Personality of the Year' at The Economic Times Real Estate Awards 2022 - South

Brigade El Dorado - North Bengaluru

Received the prestigious 'Pradhan Mantri Awas Yojana' award under the Affordable Housing projects at the PMAY - Empowering India Awards 2022

Brigade Orchards - North Bengaluru

Won the 'Residential Project - Township' at The Economic Times Real Estate Awards 2022 - South

Brigade Palmgrove - Mysuru

Won the 'Premium Villa Project of the Year' award at the NDTV Property Awards 2018

Brigade Cornerstone Utopia - East Bengaluru

Won the 'Integrated Township Project of the Year' award at the 11th Realty Plus Awards 2019 - South

Brigade Panorama - West Bengaluru

Won the award for 'Excellence in Delivery' at the 11th Realty Plus Awards 2019 - South

Brigade Mountain View - Mysuru

Won the award for 'Best Residential Dwellings above 50 units in Mysuru' at the CARE Awards 2019



BRIGADE

Building Positive Experiences

Our core values



Founders



To UPGRADE TO BRIGADE, reach us on 1800 102 9977 • BrigadeValencia.com

Site Marketing Office

NH 44, Kithaganahalli &
Banahalli Village,
Bommasandra Industrial Area,
Bengaluru – 562106.

Registered & Corporate Office

29th & 30th Floor,
WTC Bangalore@Brigade Gateway Campus,
Dr.Rajkumar Road, Malleswaram-Rajajinagar,
Bengaluru - 560055.

Dubai

Brigade Enterprises Ltd.,
902, Nassima Tower, Sheikh Zayed Rd.
Ph: +971 4355 5504
dubaisales@brigadegroup.com

Offices also at: CHENNAI • HYDERABAD • MYSURU