



Artistic Impression

Experience Elevated
Urban Living
Rooted in Nature!

#UrbanNature

 **PROVIDENT
BOTANICO**

SOUKYA ROAD, WHITEFIELD





About Provident

Established in 2008 as a 100% subsidiary of Puravankara Limited, Provident Housing Limited is a large-scale community developer that caters to the diverse residential needs of buyers, with a focus on aspirational home ownership.

15+

Years of trust

50,000+

Happy customers

9

Project presence across cities

12,500+

Homes delivered

12.8

Million sq.ft. delivered

11,000+

Homes in the making



Homes Built With More



MORE TECHNOLOGY
We pay close attention to making our homes future-ready.



MORE SUSTAINABILITY
We put nature at the centre of our processes and efforts.



MORE TRANSPARENCY
Respect for our consumers translates to the adoption of honest practices.



MORE VALUE
We strive to bring you a holistic living experience within a thriving community.



MORE TRUST
Uncompromising integrity is the way of life at Provident.



MORE QUALITY
Our work is built on modern techniques, meticulous detailing, and industry expertise.

Images used are for representation purposes only.



Get Up Close With Nature

We believe that every home we build should
contribute to a better future.

Homes that are nestled in the lap of Mother Nature,
surrounded by greenery and lush landscapes.
Clean, crisp air that fills your lungs and induces positivity.





Artistic Impression



**PROVIDENT
BOTANICO**

SOUKYA ROAD, WHITEFIELD

Experience Elevated Urban Living
Rooted in Nature!

Introducing Provident Botanico, where the five elements of nature come together to create an extraordinary urban tapestry adorned with best-in-class amenities.

These elements converge in perfect harmony, blending seamlessly with the city's rhythm. Located at the heart of bustling Bengaluru, Provident Botanico is the urban haven for those who are true connoisseurs of life's experiences.

#UrbanNature

Images used are for representation purpose only





**PROVIDENT
BOTANICO**
SOUKYA ROAD, WHITEFIELD

Designed By
The Five Elements Of Nature.

An urban life while being in constant touch with the five elements is a luxury reserved for some. For you. Air to let your wings unfurl, Water to soothe your senses, Space for you to experience the boundless, Fire to keep you invigorated, and Earth to keep you grounded. With such an elemental symphony, your life is sure to be elevated.



AIR



WATER



SPACE



FIRE



EARTH





In Touch With Nature. As Well As The World.

- Provident Botanico is situated in East Bangalore on Soukya Road in Whitefield, one of India's largest Information Technology hubs.
- Whitefield has over 40 million sq. ft.* of office space and employs over 300,000 individuals, making it a significant employment hub
- The Purple Metro Line connecting Whitefield to Challaghatta has significantly improved the connectivity.
- The upcoming STRR (Satellite Town Ring Road) and PRR (Peripheral Ring Road) connecting multiple parts of the city is expected to enhance connectivity further.
- The location is already deemed investment-worthy, presenting the potential for exponential returns in the near future.

*Source: Deccan Herald



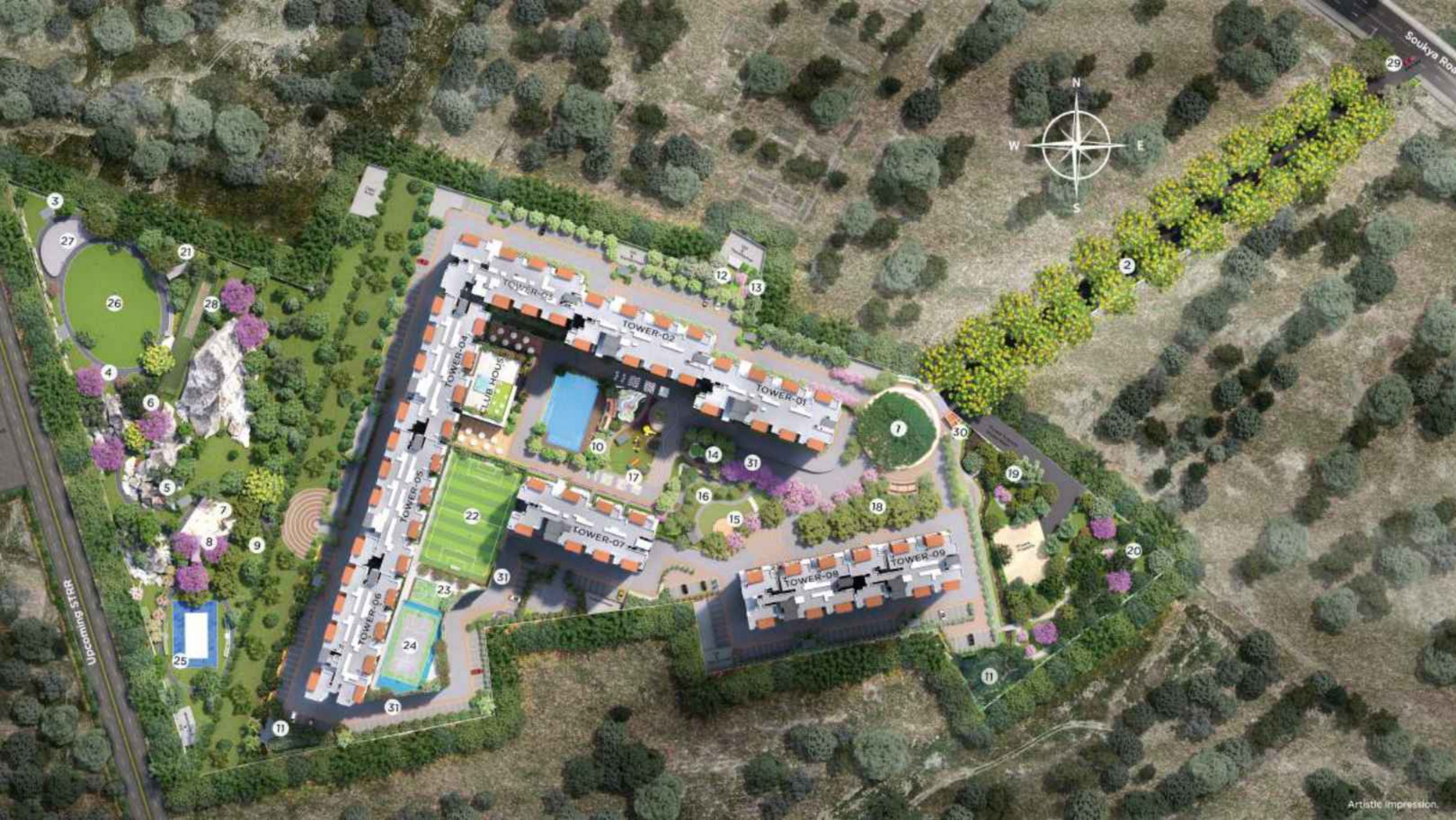
Map not to scale.



EDUCATIONAL INSTITUTIONS	Bangalore International Academy	1.1 kms	1 mins
	Bloomers School	4.8 kms	8 mins
	Shriram Global School	4.5 kms	11 mins
	MVJ College of Engineering	5.3 kms	10 mins
	DPS Whitefield	5.8 kms	12 mins
IT TECH PARKS	ITPL	8.3 kms	16 mins
	First Technology Park	9 kms	16 mins
	Shantiniketan	10 kms	18 mins
	Sigma Tech Park	10 kms	18 mins
	Technopark	11.2 kms	20 mins
HOSPITALS	Sathya Sai General Hospital	9.3 kms	16 mins
	Manipal Hospital	9.2 kms	18 mins
	Aster Whitefield Hospital	10 kms	19 mins
SHOPPING MALLS	Park Square Mall	8 kms	14 mins
	Nexus Shantiniketan Mall	10.3 kms	18 mins
	Phoenix Market City	14.5 kms	24 mins
	VR Bengaluru Mall	13.6 kms	24 mins
CONNECTIVITY	Hopefarm Channasandra Metro Station	7.1 kms	12 mins
	KR Puram Railway Station	17.8 kms	30 mins
	KIA	40 kms	70 mins

Information mentioned here is for indicative purpose only
Images used are for representation purpose only





Botanico Amenities

Outdoor-Amenities:

- 1) Rain tree plaza
- 2) Peltophorum avenue
- 3) Meditation pavilion
- 4) Swing park
- 5) Rock garden & rock climbing
- 6) Bonfire
- 7) Children's play lawn area
- 8) Tree house
- 9) Outdoor gym
- 10) Swimming pool with kid's pool area
- 11) Bio pond
- 12) Pet park
- 13) Vegetable garden
- 14) Elder's zone
- 15) Amphitheatre
- 16) Multipurpose lawn
- 17) Chess court, ludo play area
- 18) Terminelia court
- 19) Fruit orchard
- 20) Silent zone
- 21) Sky gazing deck

Outdoor Sports Amenities:

- 22) Futsal court
- 23) Dribble court
- 24) Multipurpose court
- 25) Beach volleyball court
- 26) Maidan / multipurpose ground
- 27) Skating rink
- 28) Cricket pitch

Entry / Exit:

- 29) Entry / Exit access road
- 30) Security cabin (main entry)
- 31) Parking Entry/Exit

Clubhouse Sports Amenities:

- a) Badminton court
- b) Table tennis
- c) Squash court
- d) Arcade games
- e) Billiards
- f) Dance studio

Club House Amenities:

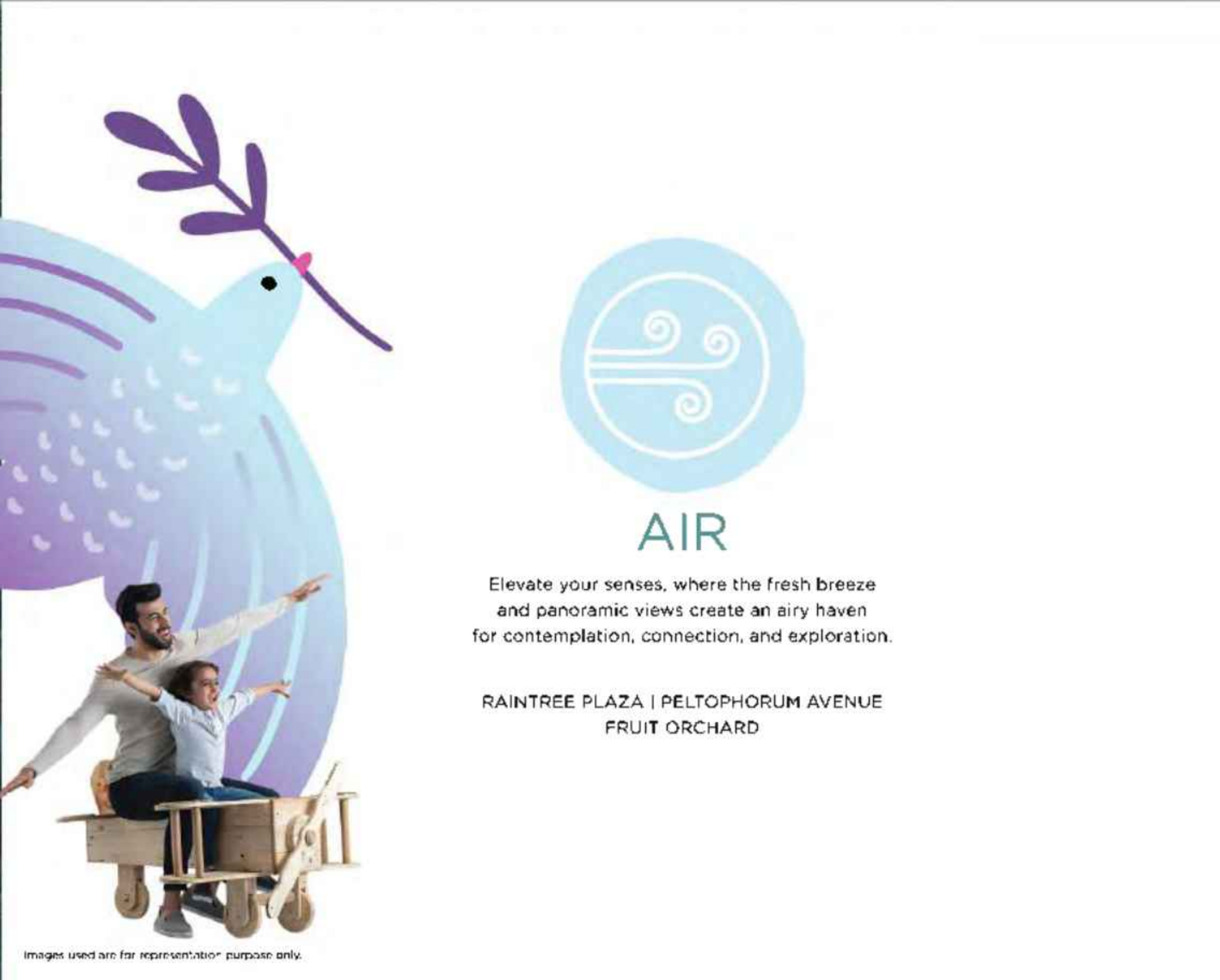
- g) Multipurpose hall
- h) Salon
- i) Learning center
- j) A.V. Room
- k) Crèche
- l) Co-working space
- m) Café
- n) Gym with change & locker room
- o) Music room
- p) Guest rooms
- q) Hobby room



40+ Amenities That Create An Elemental Symphony.

ROCK GARDEN | AMPHITHEATRE | BIO POND
SKATING RINK | FRUIT ORCHARD | CO-WORKING SPACES
AND MANY MORE...





AIR

Elevate your senses, where the fresh breeze and panoramic views create an airy haven for contemplation, connection, and exploration.

RAINTREE PLAZA | PELTOPHORUM AVENUE
FRUIT ORCHARD

Images used are for representation purpose only.





WATER

Immerse yourself in the serenity that evokes
a sense of relaxation and balance
that helps you get into the flow of life.

BIO POND
SWIMMING POOL | KID'S POOL



Images used are for representation purpose only





Images used are for representation purpose only.

Swimming Pool



Artistic Impression.

Bio Pond



Images used are for representation purpose only.

Kid's Pool



SPACE

Unwind under the moon and the starlit skies.
Offering a space for reflection and stargazing that transcends
the ordinary, inviting you to dream and be inspired.

SKY GAZING DECK | MOON PODS
MEDITATION PAVILION





Meditation Pavilion



Images used are for representation purpose only.

Sky Gazing Deck



Artistic Impression.

Moon Pods

Artistic Impression.



FIRE

Ignite your vitality, raise your energy, amidst the invigorating spaces that kindle the flames of your well-being.

BONFIRE | OUTDOOR GYM | FUTSAL COURT | DRIBBLE COURT
MULTIPURPOSE COURT | BEACH VOLLEYBALL COURT
SKATING RINK | CRICKET PITCH



Images used are for representation purpose only





Outdoor Gym



Dribble Court



Skating Rink



Cricket Pitch



Beach Volleyball Court

Artistic Impression.



EARTH

Ground yourself with greenery, a sanctuary that fosters a connection with the earth and your soul.

MULTIPURPOSE LAWN | MAIDAN/MULTIPURPOSE GROUND
SWING PARK | ROCK GARDEN | TREE HOUSE
PET PARK | VEGETABLE GARDEN | ELDER'S ZONE
CHESS COURT & LUDO PLAY AREA | TERMINELIA COURT
AMPHITHEATRE | CHILDREN'S PLAY LAWN AREA



Images used are for representation purpose only.





The Magnificent **20,000 Sq Ft** Clubhouse.

The massive clubhouse hosts exclusive indoor luxuries thoughtfully designed to appease your senses.

It's where the elements come together to create an experience unlike any other.

MULTIPURPOSE HALL | SALON | LEARNING CENTRE
AV ROOM | CRÈCHE | CO-WORKING SPACES | CAFÉ
GYM WITH CHANGE AND LOCKER ROOM | MUSIC ROOM
GUEST ROOMS | HOBBY ROOMS | BADMINTON COURT
TABLE TENNIS | SQUASH COURT | DANCE STUDIO
ARCADE GAMES | BILLIARDS



Images used are for representation purpose only



Table Tennis

Images used are for representation purpose only.



Gym With Change And Locker Room

Images used are for representation purpose only.



Crèche

Images used are for representation purpose only.



Co-working Spaces

Images used are for representation purpose only.



Billiards

Images used are for representation purpose only.





We Are Sustainable To The Core

Future readiness is at the centre of our innovation philosophy. We have re-engineered our processes and offerings to make them greener, healthier, and more sustainable. The result is a stunning residential ecosystem called Provident Botanico.



LANDSCAPE



WATER



ENERGY



CIVIL



WASTE



LANDSCAPE

Implementation of solar passive design which first reduces heating and cooling loads through energy efficiency strategies and then meets reduced loads with solar energy.

Units face north and south directions, maximizing thermal energy efficiency, reducing heat gain, and inviting ample daylight and natural ventilation.

30+ indigenous species of trees and shrubs.

Over 1200 trees are being planted in the development, breathing life into the landscape.

-70% lung space in the development.

More than 2.5 acres of green belt with the presence of natural rocks across 0.75 acres.

Specialized drip irrigation system that reduces water wastage.





WATER

Water-efficient fixtures with aerators ensure efficient water flow, minimizing waste and maximizing conservation.

Rooftop rainwater harvesting and surface rainwater collection.

With these, we are saving 31% in freshwater demand which results in savings of -₹71 lakhs, equivalent to -₹5,500/- per family per year.

An advanced membrane bioreactor sewage treatment plant that efficiently treats wastewater, leading to a 100% reduction in freshwater demand for landscaping and flushing.



ENERGY

Solar panels on rooftops generate 55 kW of clean energy to power the common areas and the street lights.

Rooftop solar water heaters provide 100 litres per day of hot water to all the bathrooms in the top two floors.

Annual cost savings of -₹6 lacs per annum through common area lighting.

Annual savings of -₹29 lacs on water heating costs through solar water heating.

Provision of EV charging in 25% of total car parks.

CIVIL

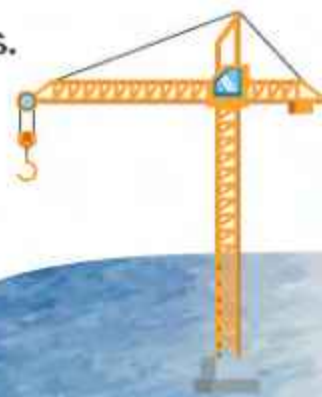
Usage of PPC cement which has a 30% reduction in greenhouse gas emissions.

Usage of slag or M sand which is a 100% replacement for river sand.

Recycled construction aggregates instead of stone aggregates in non-structural elements.

Flooring is made of 15% recycled content.

Usage of low VOC paints which have lower emissions of harmful chemicals.



WASTE



Segregation of dry and wet waste.

Use of an organic waste converter with a rotary drum capacity of 1.6 tons which converts wet waste to manure, ensuring reduction in landfills.



Meticulously Planned. Thoughtfully Crafted.

- Externally ventilated rooms
- Full-height glazed windows in the bedrooms for maximum natural light
- Strategically placed invisible outdoor AC units
- Maximum privacy homes designed such that two homes don't face each other
- Efficient carpet areas for maximum utility
- 8-foot entry doors
- Geyser in bathrooms
- 100% power backup for homes



UNIT PLANS

2 BHK COMFORT TYPE 1



Artistic Impression.



Artistic Impression.

2 BHK Comfort Type 1:
SBA: 986 sqft
Usable Area: 658 sqft
RERA Carpet Area: 623 sqft

2 BHK GRAND
TYPE 1



2 BHK Grand Type 1:
SBA: 1059 sqft
Usable Area: 711 sqft
RERA Carpet Area: 647 sqft

3 BHK COMFORT
TYPE 2 AND 2A



3 BHK Comfort Type 2:
SBA: 1334 sqft
Usable Area: 901 sqft
RERA Carpet Area: 835 sqft

3 BHK GRAND
TYPE 1 AND 1A



3 BHK Grand Type 1:
SBA: 1480 sqft
Usable Area: 1003 sqft
RERA Carpet Area: 933 sqft



**PROVIDENT
BOTANICO**

SOUKYA ROAD, WHITEFIELD

PRM/KA/RERA/1250/304/PR/210324/006726 | RERA website: <https://rera.karnataka.gov.in/>

 **080 4455 5520**  www.providenthousing.com

 sales@providenthousing.com

Changes may be made during the development and standard fittings and specifications are subject to change with notice. Standard fittings and finishes are subject to availability and vendor discretion. The interiors shown in the brochure are not standard and will not be provided as part of an apartment. The information contained herein is believed to be true but not guaranteed. The colors of the building are indicative. This is a reference document intended only to provide general information and does not constitute an offer or contract. Customers are encouraged to carry out their own due diligence including but not limited to a review of the agreement to sell and payment terms and conditions prior to submission of booking documents. The sustainability information is for indicative purposes only and is calculated under standard operating conditions. E & OE.

The images used in the brochure are indicative of style only. The photographs of the interiors, surrounding views, etc. are not standard and may be altered and do not represent actual views or surrounding authorities and/or applicable law. All the information mentioned herein is for indicative purposes only.

