

www.worldofnit.com

Siban, Plot No 46 K & L, DTA-GIFT CITY,
NR. East Gate, Gandhinagar - 382355

Call: +91 997 446 2727
www.gujrera.gujarat.gov.in/ MAA14625

Project by:



This brochure/document does not constitute an offer and/or acceptance and/or contract and/or agreement and/or transaction and/or any intention thereof of any nature whatsoever.
The layout plan, numbers, buildings, wings, structure, common areas, facilities, information, images, sketches, visual references, specifications and other all details herein are merely, creative imagination and an Architect's impression and are only indicative.
These should not be construed in any manner as disclosures under the provisions of RERA ACT or any other act and the rules thereunder, and the relevant applicable disclosures shall be made at an appropriate time. All the dimensions mentioned in this document may vary 60% due to construction exigencies. Actual product may vary differ from what is indicated herein. The photographs contained herein are stock/standard images used to indicate a conceptual development/lifestyle, and have been taken at a location other than SIBAN project site. No representation or warranty is made or intended as to the accuracy or completeness of information herein or as to its suitability or adequacy, for any purpose.
Final product is subject to approval by competent authority and prevailing law, act/guideline at the time. We support cashless transaction/economy.

MULTI VERSE

of Lifestyle



Siban's Artistic Image

INTRODUCING

siban

You've never believed in sticking to just one path, one idea, or one way of living. If your thinking is multi-dimensional, why should your living be any different?

Siban is a multiverse of lifestyles.

Siban integrates diverse lifestyle to create a one of its kind multiverse.

A space that is as versatile as you.

A space for innumerable choices, dreams and possibilities.

★
THE GIFTVERSE
The Multiverse Of Multiverses

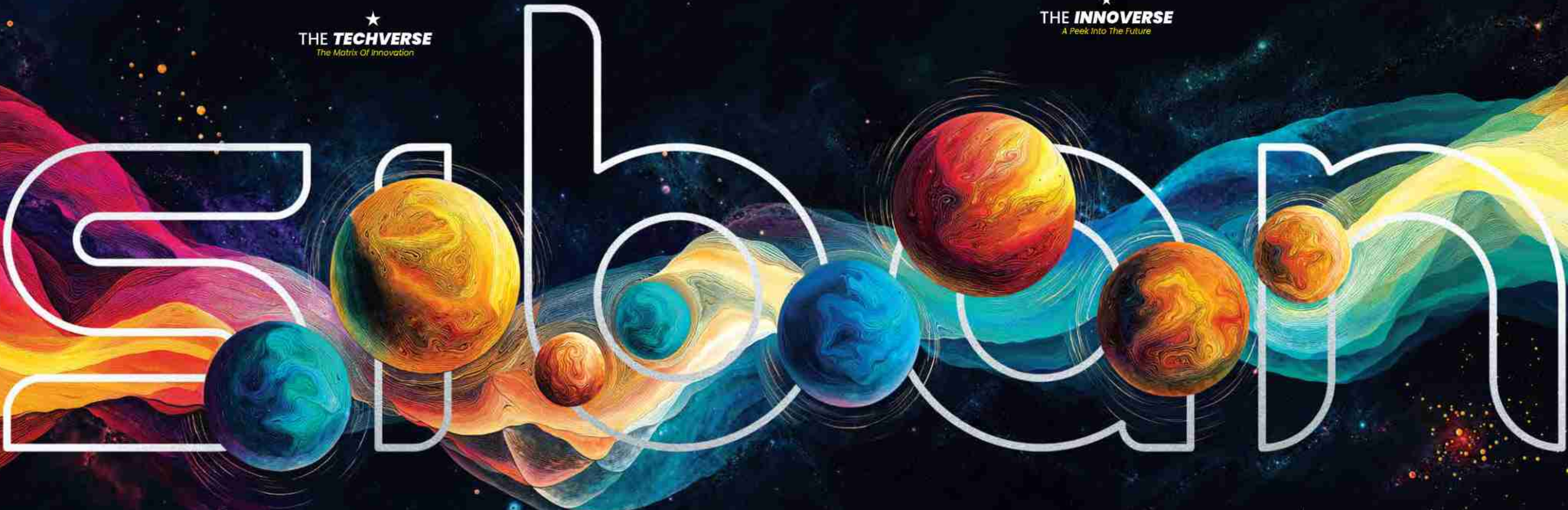
★
THE CAREVERSE
A Realm Of Comfort

★
THE MULTIVERSE
Experience The Sibon Difference

★
THE CLUBVERSE
Feel Like You Belong

★
THE TECHVERSE
The Matrix Of Innovation

★
THE INNOVERSE
A Peek Into The Future



★
THE FUNVERSE
A Well-Deserved Pause

★
THE YOUVERSE
Everything Begins With You

★
THE TIMEVERSE
Never Stuck In Time

★
THE ARTVERSE
Appeal To Aesthetics

★
THE INVESTVERSE
The Multiverse Of Opportunities

★
THE FUTUREVERSE
Where Life Converges

MULTIVERSE

Experience The Siban Difference

LIVE THE SIBAN MULTIVERSE LIFESTYLE.

Located in the heart of GIFT City, Siban is a mixed-use development designed for those who refuse to live unidimensionally.

- **LIMITLESS LIVING:** Premium residences, high-street retail, and world-class amenities
- **DESIGNED FOR YOU:** From cosy studios to spacious 2.5 BHKs, short stays to long-term investments
- **URBAN HUB:** Curated dining, entertainment zones, and vibrant high-street retail

At Siban, art, technology, wellness, and entertainment converge, creating a future-forward lifestyle where everything is possible. So, why live in one dimension when you can embrace infinite possibilities?

FROM THE CHAIRMAN'S DESK

The MULTIVERSE is not just a concept – it's a revolutionary response to the growing complexity of modern life where time is going to be the biggest currency.

We need seamless transitions between work, leisure, innovation, and personal growth. Traditional urban design fails to meet these dynamic needs. **GIFT City is a truly futuristic city that addresses the challenges of the future, aligning with the Hon'ble Prime Minister of India Shri Narendra Modi's vision to create a world-class finance and IT zone for India, serving not only the country but the entire world.**

Within GIFT City, we are offering yet another multiverse – a meticulously crafted ecosystem where every dimension of human experience converges.

This is more than real estate. This is a philosophy of smart integrated living.



THE GIFTVERSE

The Multiverse of Multiverses

GIFT City is rapidly transforming into India's premier global financial and business hub, redefining urban living with cutting-edge infrastructure and world-class opportunities. From fintech to lifestyle, it's setting new benchmarks for sustainable and futuristic development making it a space that pioneers innovation in the country.

PATHBREAKING INITIATIVES & INFRASTRUCTURE EMPOWERING GLOBAL ENTREPRENEURS

- Rolls Royce Aviation: A hub for advanced aerospace engineering and technology
- Multiple Foreign Universities: Expanding international educational opportunities
- Lilavati Hospital: A state-of-the-art healthcare facility
- Asia's Biggest D-Mart: A massive retail destination
- International Financial Court: A global financial hub
- Gift Riverfront: A scenic waterfront development
- First AI park: A hub for artificial intelligence innovation
- AI University: A dedicated institution for AI research and learning
- Potential hub for integrated centre for Global Insurance & re-insurance
- Global Capacity Centres to provide support to entire industry ecosystem present at the GIFT City

Planned over 3300 acres, GIFT City is a self-sustaining, multi-functional vertical metropolis that visionary investors, entrepreneurs, and residents have long aspired for.

It's a hyper-integrated ecosystem encompassing commercial, residential, educational, and recreational realms into a single, seamless dimension, featuring a walk to work concept.

THE GROWTH OF THE GIFTVERSE

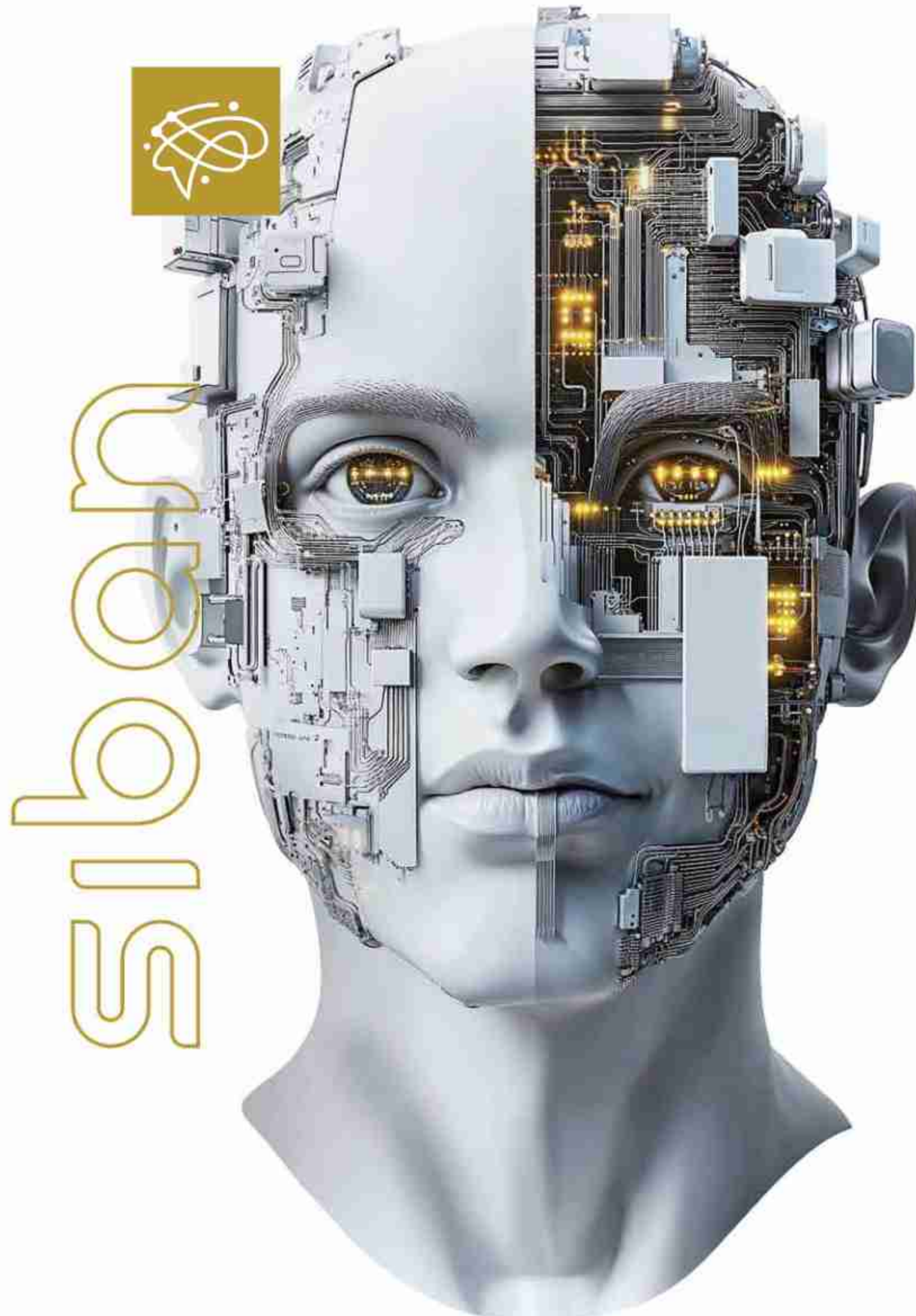
- 15-20% CAGR expected over the next decade
- 30% surge in demand for community-focused residential units, especially 1BHK to 2.5BHK homes. Sibani is designed to meet this need, offering a space where connections thrive and lifestyles evolve
- 40% YoY growth in retail space occupancy, driven by both global and local brands
- 100+ weekly international flights to key business destinations like Dubai, London, and Singapore
- Driverless metro pods for seamless urban travel
- Incubators to support startups in fintech, IT, and emerging technologies
- GIFT NIFTY lets global investors trade NIFTY 50 derivatives
- World-class Business District for Industries
 - Aircraft Leasing & Banking
 - BATF Services
 - Bullion Exchange
 - Capital Markets
 - Fintech
 - Foreign University
 - Fund Management
 - Finance Companies
 - Global Capacity Centres
 - Payment Services
 - Ship Leasing
 - Ancillary Services

Visit the website to know more - www.giftgujarat.in



THE TECHVERSE

The Matrix Of Innovation



Siban, powered by the internationally benchmarked infrastructure of GIFT City, fuels a high-quality lifestyle that's comfortable and convenient. It is designed for the modern resident, offering **cutting-edge smart home features that make life easier, more efficient, and enjoyable.**

THE GIFT OF TECH

- 24/7 power supply for seamless operations
- Excellent connectivity to major cities
- India's first integrated waste management system
- Advanced, high-speed internet
- Metro station in the Domestic Tariff Area (DTA) of GIFT City
- Implementation of ICT systems including CCTV surveillance
- Fibre infrastructure augmentation
- E-Bus services

THE SIBAN MULTIVERSE

- Centralised chilled water HVAC system integrates comfort with eco-conscious living
- Automated waste management system
- Integrated Building Management System (IBMS) for seamless operations
- High-Speed Internet and Automated Access Controls

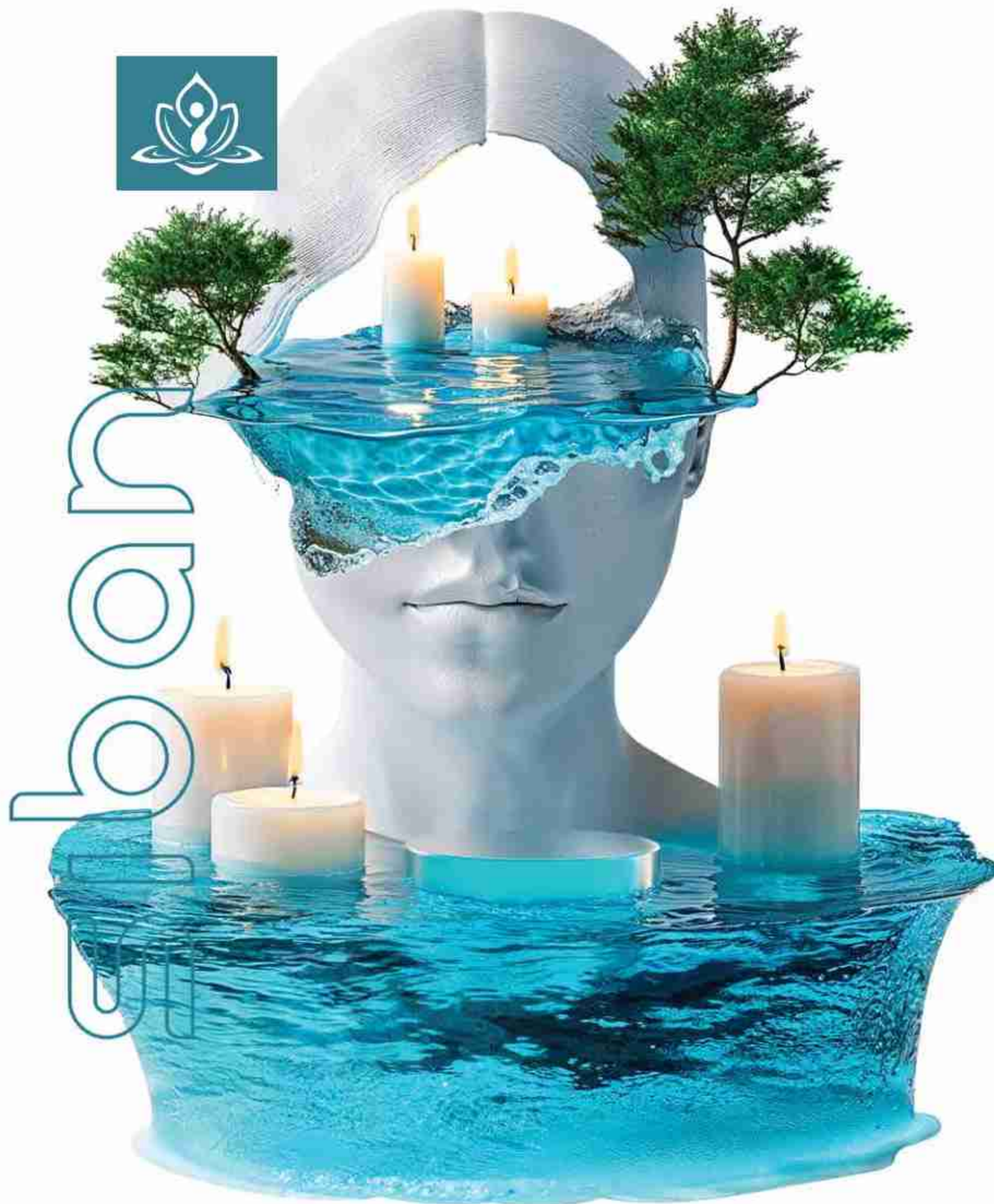


**A LANDMARK THAT STANDS TALL
IN EVERY DIMENSION**

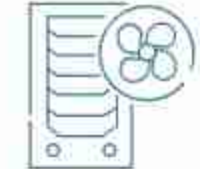


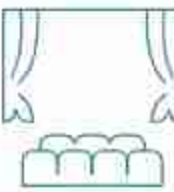



THE CLUBVERSE

Feel Like You Belong



Siban is a place where you feel like you truly belong. **Designed to foster connections and celebrate community**, it offers social and cultural spaces that bring people together to come and celebrate life.

 CURATED SOCIAL SPACES	 PET PLAZA	 JACUZZI	 POOL TABLE/ FOOSBALL TABLE
 AIR HOCKEY	 CARROM TABLE	 NATURAL COOLING TOWERS	 ART & CRAFT ROOM
 MUSIC ROOM, MEET & GREET LOUNGES	 LIBRARY, AND CO-WORKING SPACES ON THE GROUND FLOOR	 PODIUM-LEVEL CLUB WITH PREMIUM AMENITIES	 AVANT-GARDE MOVIE HALL
 BBQ AREA	 KIDS' PLAY ZONE TODDLERS' PLAY AREA	 WALKING TRACK	 SENIOR CITIZEN PLAZA
 YOGA DECK	 SPA & SALON	 DOUBLE HEIGHT LOUNGE	 VIBRANT JUICE BAR & COSY AMBIENT CAFE
 BANQUET HALL	 PARTY LAWN PODIUM	 LAUNDROMAT	AND MANY MORE...

A CURATED CLUBVERSE OF
60+ GLOBAL LIFESTYLE AMENITIES SPREAD
ACROSS 1 LAKH SQ. FT.

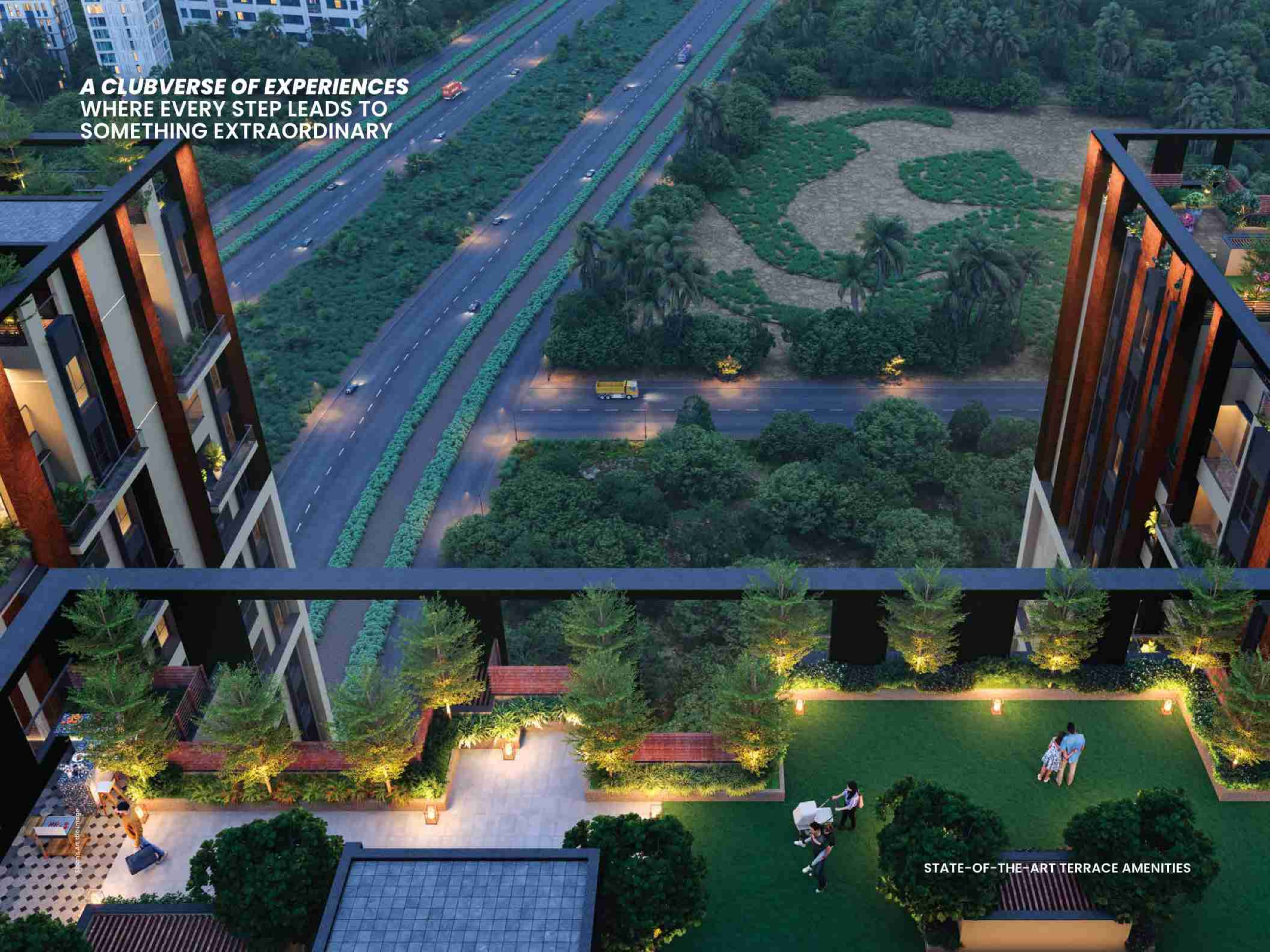
SWIMMING POOL

**A SERENE CLUBVERSE CRAFTED FOR
THOSE WHO LIVE BEYOND THE ORDINARY**

POOL DECK WITH OPEN TO SKY SIT-OUT AREA

Alberici Architects

**A CLUBVERSE OF EXPERIENCES
WHERE EVERY STEP LEADS TO
SOMETHING EXTRAORDINARY**



STATE-OF-THE-ART TERRACE AMENITIES



LOUNGE AREA



RECEPTION AREA



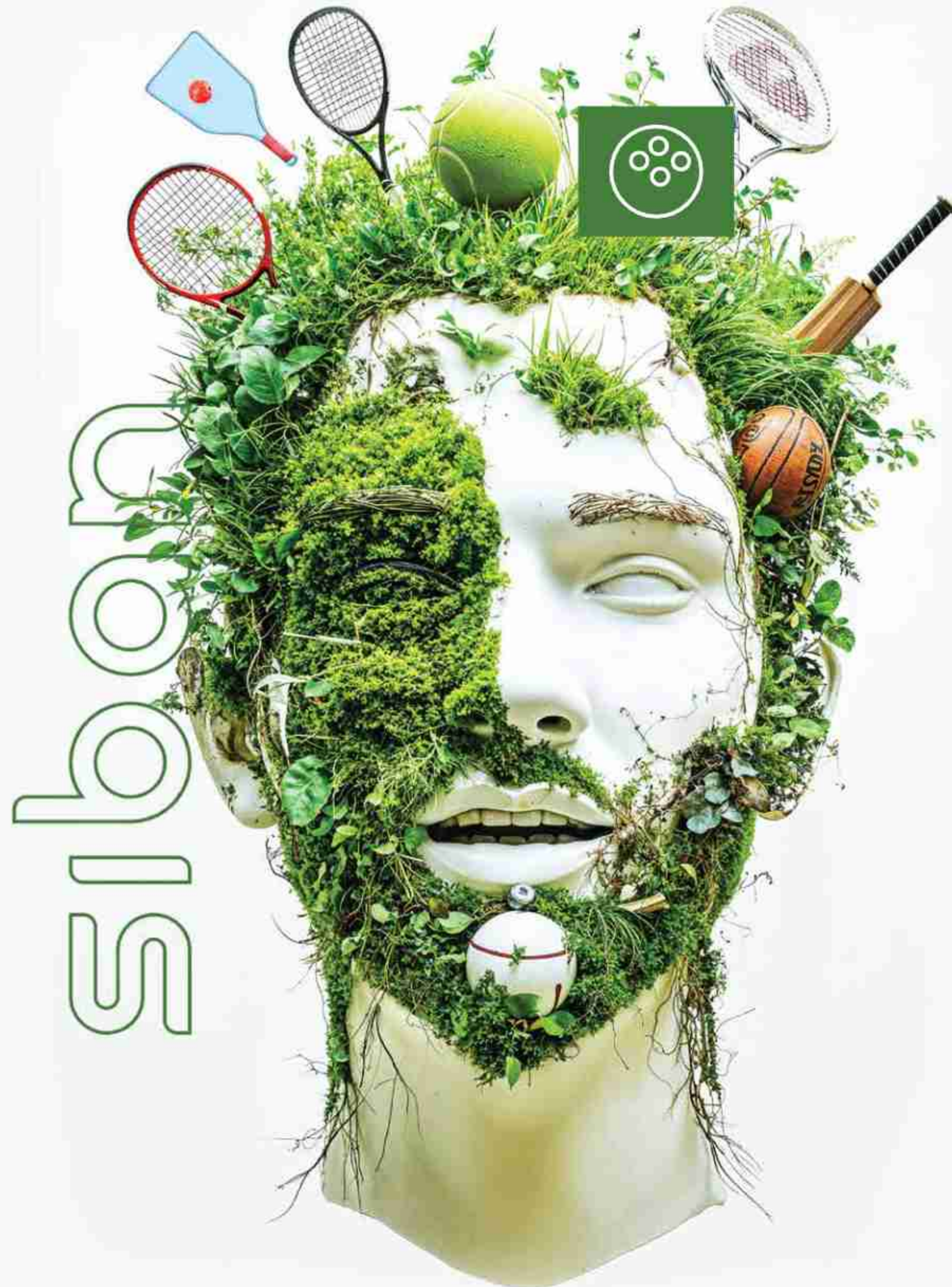
MEETING ROOM



THEATRE HALL

THE FUNVERSE

A WELL-DESERVED PAUSE



At Siban, we believe life should be filled with **experiences that entertain, refresh, and bring joy**. Every corner here invites you to relax, have fun, and connect with life in ways that are as enriching as they are exciting.

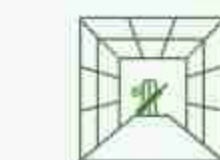


BOX CRICKET PITCH

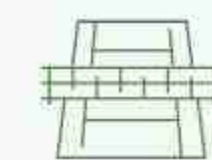


GYMNASIUM

Siban's Artistic Image



BOX CRICKET PITCH



BADMINTON COURT



BASKETBALL COURT



PICKLEBALL COURT



INDOOR GAME ZONES



OPEN-AIR GYM



KICK BOXING AREA



PILATES & ZUMBA STUDIO

**PICKLEBALL:
THE STAR OF FUNVERSE**



PICKLEBALL COURT

**SMASH RECORDS AT
THE FUNVERSE COURT**

The Court Is Yours.

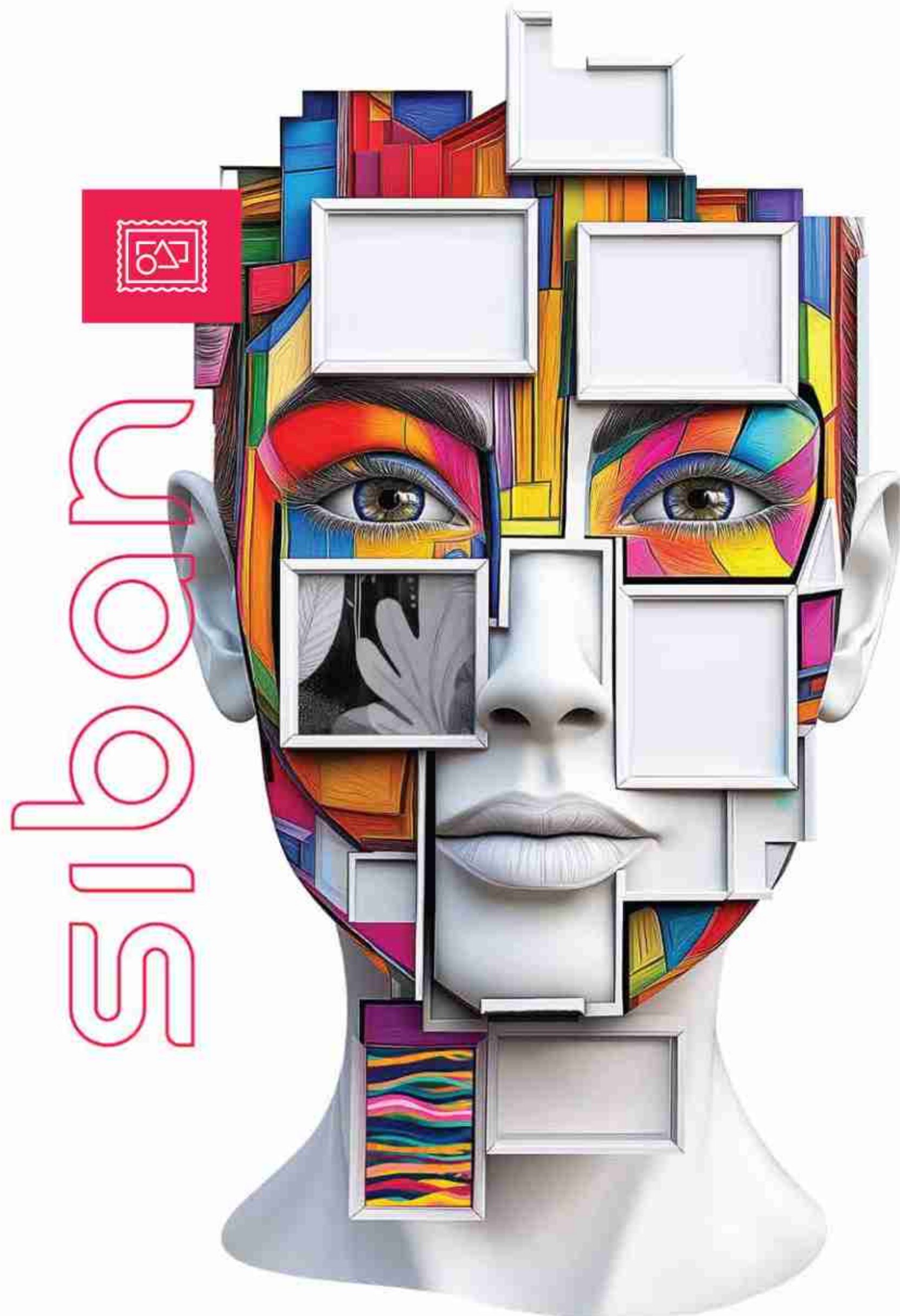


Silbon's Artistic Image

BADMINTON COURT

THE ARTVERSE

Appeal To Aesthetics



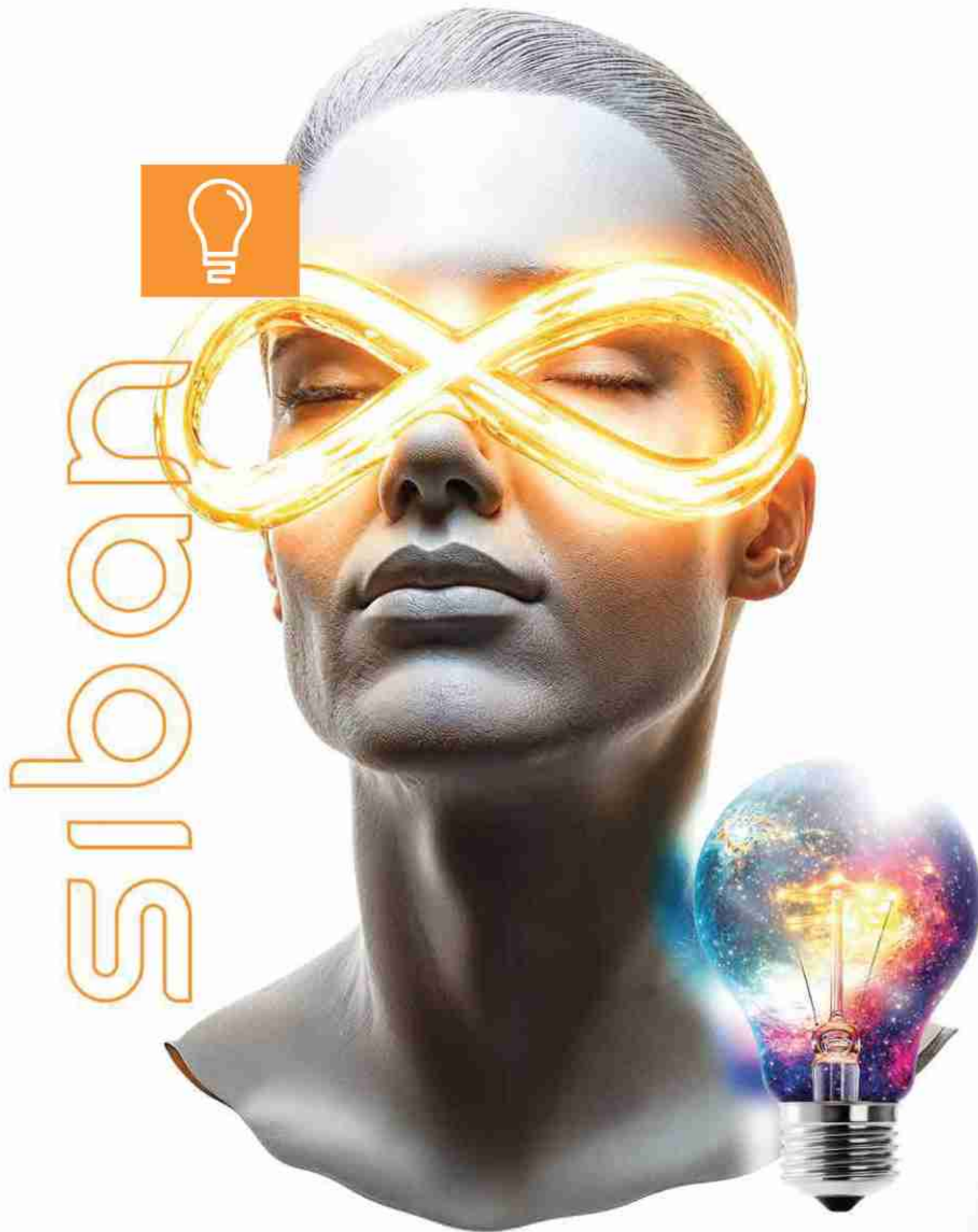
The Artverse is a space where creativity thrives at every corner, where aesthetics inspire and elevate everyday living. **Each floor houses a curated art experience**, carefully selected to showcase diverse expressions of creativity, offering **a journey through art as you move from level to level.**

- Curated art experience on every floor
- Sculptural elements in common spaces
- Art-inspired foyers, lounge, play areas and cafe



THE INNOVERSE

A Peek Into The Future



Step into a world where your home is more than just a space—it's a canvas of individual expression. Our residences are **crafted to seamlessly blend comfort, convenience, and personal flair**. From the moment you arrive through the **grand, air-conditioned foyers** to the intricate details of your **pre-designed yet customisable interiors**, every element is meticulously curated to elevate your experience.

- Every residential unit comes with a private balcony
- Double-height, air-conditioned grand foyers, creating first impressions that last
- Innovative layout options designed as per International Financial District
- Grade 'A' residential units with all innovative service benchmark



BALCONY WITH A GARDEN VIEW



WELCOMING ENTRANCE FOYER

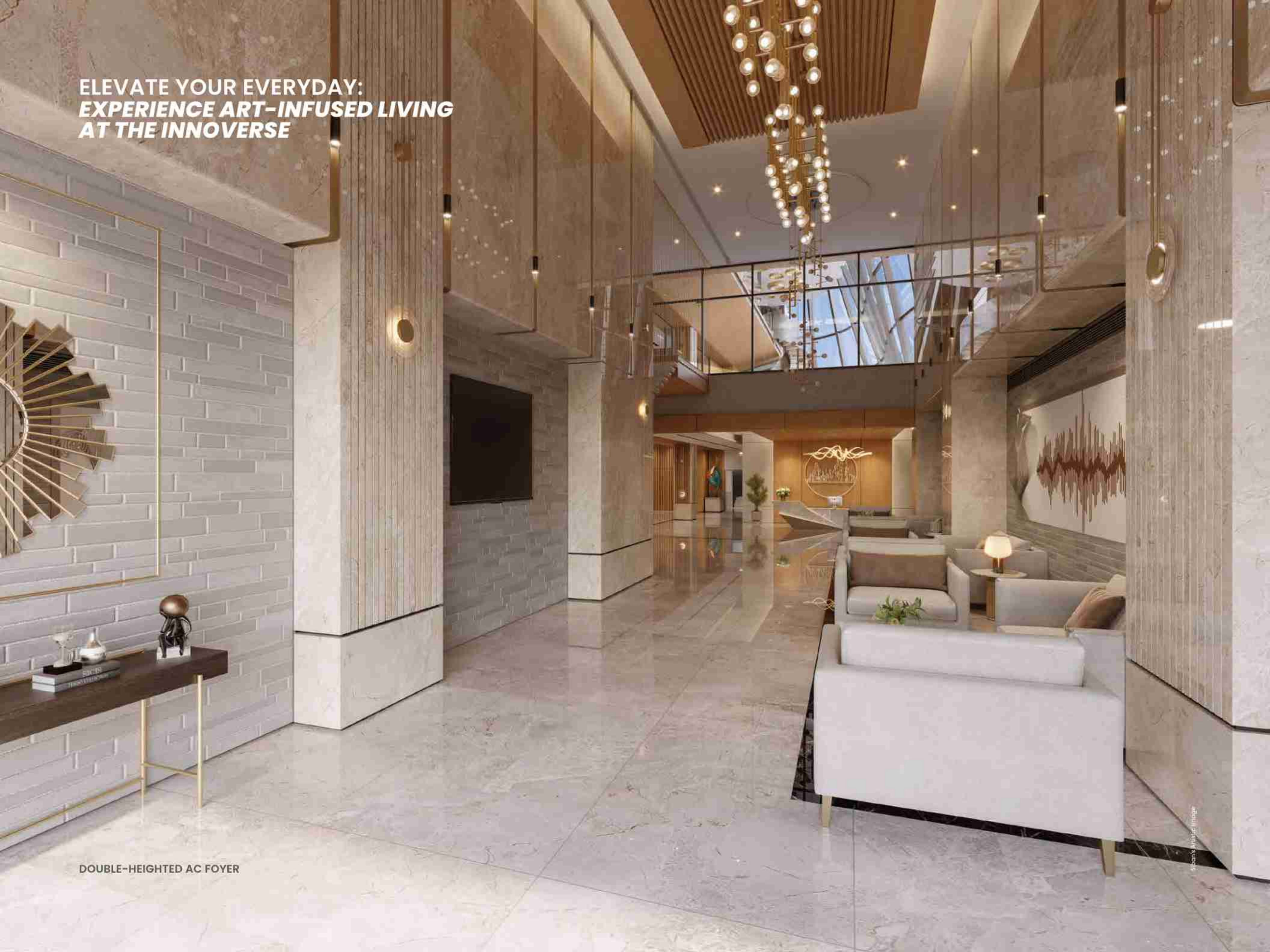
**STEAL A PEEK INTO
A WHOLE NEW UNIVERSE**



Gibson's Artistic Image

COSY LIVING ROOM WITH BALCONY

**ELEVATE YOUR EVERYDAY:
EXPERIENCE ART-INFUSED LIVING
AT THE INNOVERSE**



DOUBLE-HEIGHTED AC FOYER

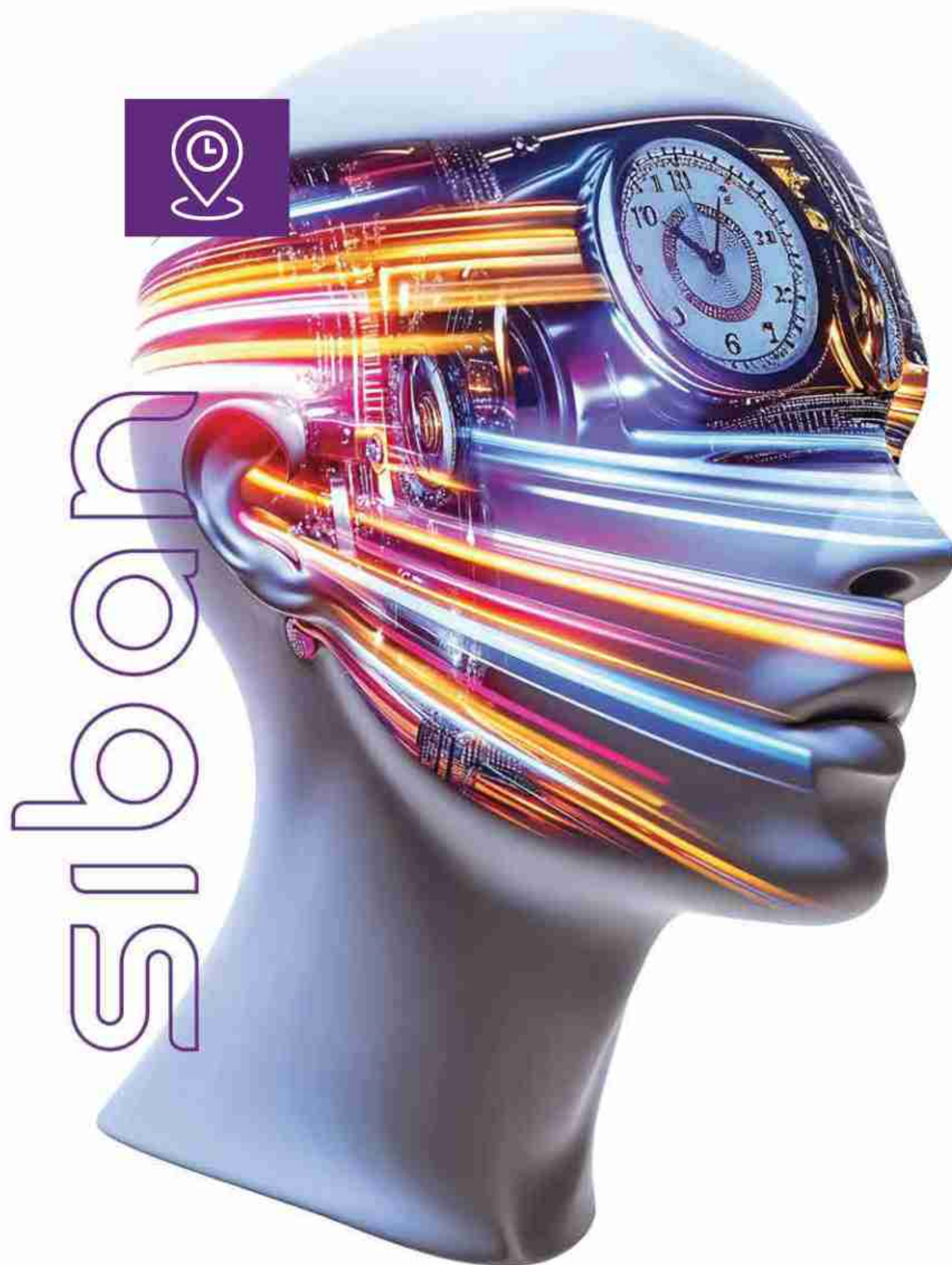
**WITH SKYVERSE,
ASCEND TO A POISED LIFESTYLE**

SKY GARDEN

Alcon's Artistic Imagination

THE TIMEVERSE

Never Stuck In Time



At Siban, every moment is **designed for seamless movement, combining cutting-edge technology with thoughtful convenience**. Whether you're heading to work, coming home after a long day, or require medical assistance, these intelligent systems adapt to your needs, enhancing your experience and making it a truly connected space.

- Intelligent Destination Control Elevator System (IDCES) ensuring minimal wait time
- Service and stretcher elevators in every block
- 4 levels of basement parking that accommodate -1,800 cars
- Smart parking management system
- Valet + mechanical car parking
- Separate entry, exit and vehicular ramps
- BMS - Building Management System Room



THE CAREVERSE

A Realm Of Comfort



At Siban, your care is paramount to us. That's why we have **wheelchair-accessible ramps, service and stretcher elevators in all blocks; accessible restrooms with support bars for the elderly, reserved parking spaces for the disabled, ergonomic workspaces with adjustable desks for comfort; Braille etchings for visually impaired people and much more.** But that's not all. We even care for those who care for you. For instance, we have **dedicated spaces for your staff**, which improves their overall well-being and allows them to better serve you. In essence, Siban's thoughtful design creates a truly inclusive environment where everyone, regardless of age or ability, experiences a seamless and dignified living experience.

- Service and stretcher elevators in all blocks
- Drivers Lounge
- Janitor's Room
- Staff Lunch Area
- Wheelchair-accessible ramps and pathways
- Parcel Room
- Ergonomic workspaces with adjustable desks
- Accessible restrooms with support bars
- Reserved parking spaces



WHEELCHAIR-ACCESSIBLE RAMPS



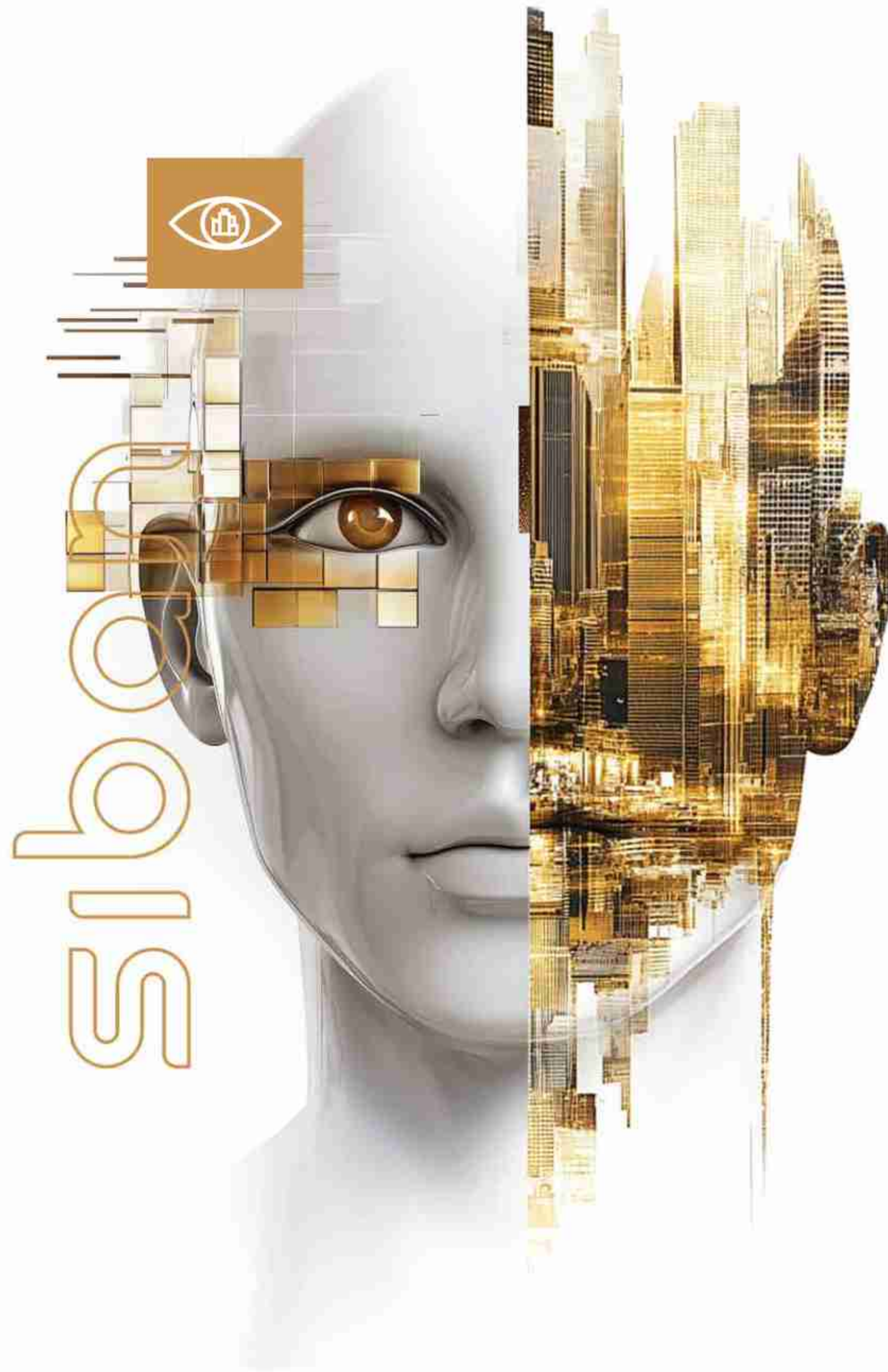
RESERVED PARKING SPACES



STAFF LUNCH AREA

THE FUTUREVERSE

Where Life Converges



The Futureverse is where the world of retail, dining, and community converge. Our **high-street retail spaces, with 20-foot-wide shop frontages**, are designed to accommodate both international and local businesses, creating a vibrant shopping destination that blends global trends with local flavours. With **cutting-edge infrastructure, smart mobility solutions**, and a **thriving financial hub**, GIFT City is setting new benchmarks for the cities of tomorrow.

LIVE THE FUTURE

- Riverfront Malls - Premium shopping and entertainment
- Metro Pods - Smart, efficient urban transit solutions
- Bullet Train - High-speed connectivity for seamless travel
- End-to-End Public Transportation with bus & metro
- Establishment of Techfin centers



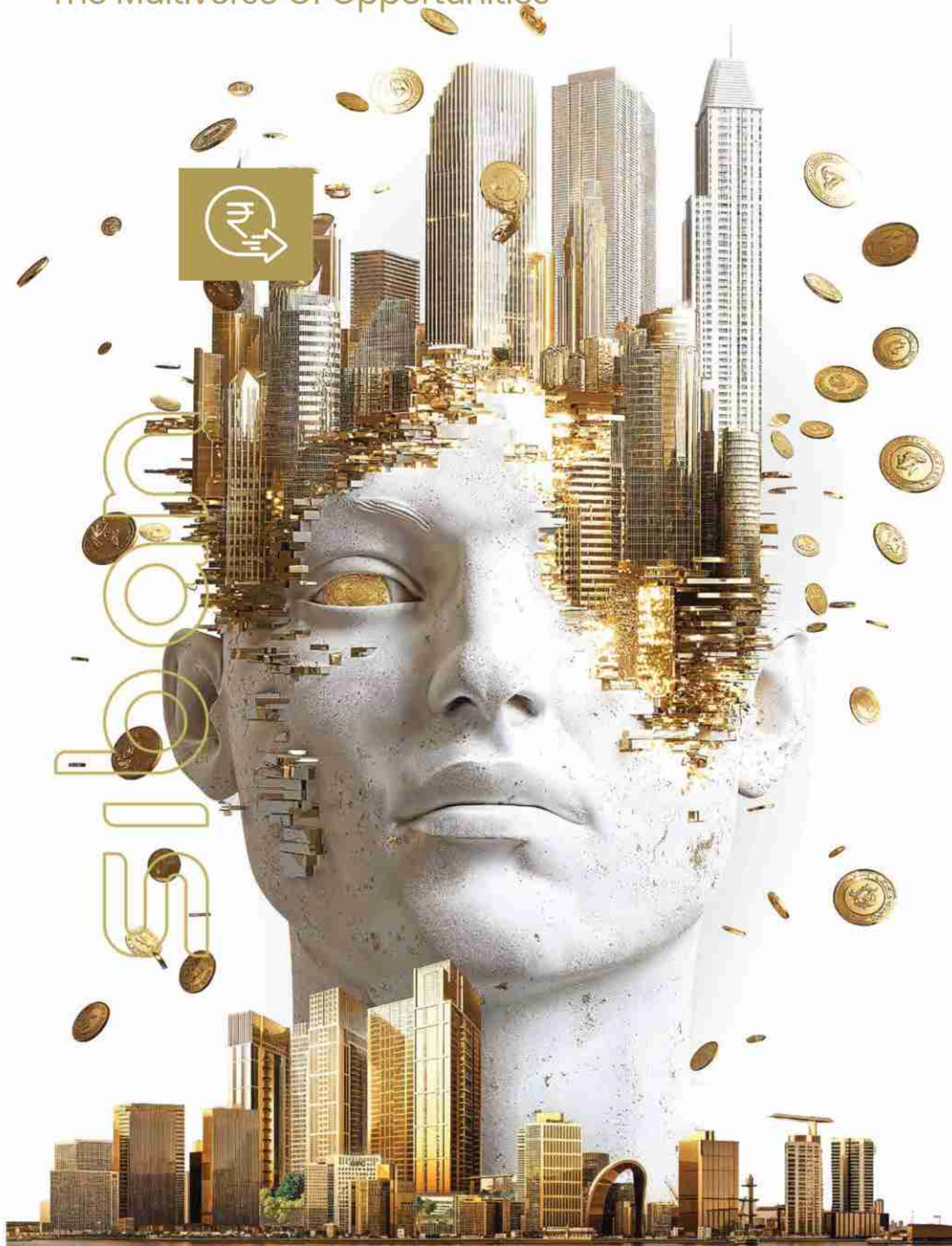
SHOWROOMS & RETAIL SPACES



SHOWROOMS & RETAIL SPACES

THE INVESTVERSE

The Multiverse Of Opportunities



A place where limitless possibilities converge, Siban offers various opportunities for every kind of investor and end-user.

HIGH-STREET RETAIL

Thoughtfully designed retail spaces,
20 Ft. wide shop frontage for leasing

LONG-TERM AND SHORT-TERM STAYS

Perfect for personal use as well as long-term and short-term
rentals including Airbnb-friendly options

FULLY-SERVICED CORPORATE HOUSING

Talent attraction made easy

INTERNATIONALLY-BENCHMARKED SERVICED APARTMENTS

For your VVIP and international guests

COSY HOMESTAYS

Offering a sense of intimacy and tranquillity





siban's artistic image

**A TOWERING VISION OF
INFINITE POSSIBILITIES**



**NATURAL
COOLING SYSTEM**
AN ECO-FRIENDLY GIFT
FROM SIBAN

A UNIVERSE OF VASTU HARMONY

Extending care reverse to a whole new level

Siban transcends the ordinary, weaving the timeless wisdom of Vastu seamlessly into modern luxury.

■ HARNESSING UNIVERSAL ENERGY

Vastu, a science transcending religion, brings synergy between your dwelling and cosmic forces that amplify your well-being.

■ A SYMPHONY OF BALANCE

Discover a profound connection between your body's energy and Earth's geography.

■ WELLNESS REIMAGINED

A home in Vastu harmony nurtures your health, allowing positivity to flow unhindered.

■ BALANCED ARCHITECTURE

Thoughtful spatial planning ensures harmony between aesthetics and functionality.

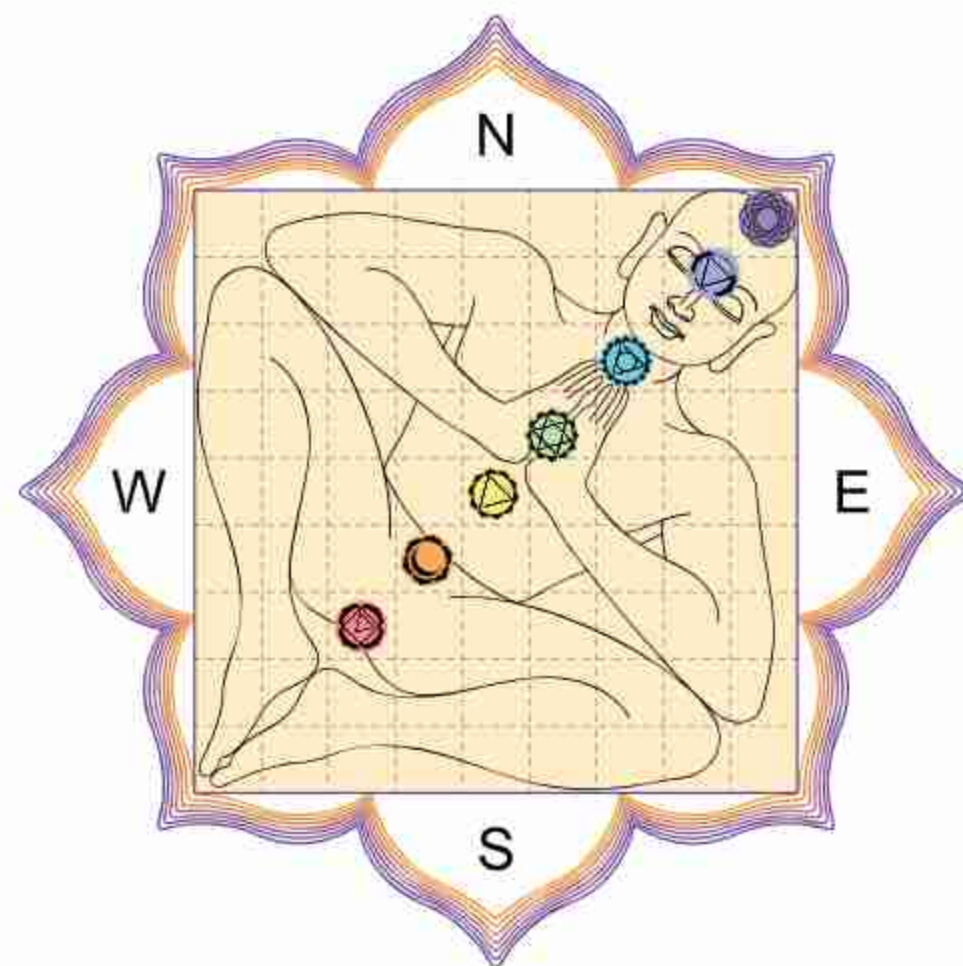
Siban transcends the ordinary, weaving the timeless wisdom of Vastu seamlessly into modern luxury. Vastu consultant Shri Santosh Guru is a renowned Vastu expert who, with his team at Mahavidhya has made sure that every aspect of Siban brings prosperity and positivity.



SHRI SANTOSH GURU

www.tantravastu.com

[tantravaastu_mahavidhya](https://www.instagram.com/tantravaastu_mahavidhya)



GLOBAL LEADERSHIP IN SUSTAINABILITY

Siban, an IGBC Platinum-rated residential project, offers a sustainable and luxurious living experience.

- 30% to 50% Reduced water usage through water recycling and water-efficient fixtures
- Green landscapes, a heat-resistant building envelope and roof garden to keep the temperature down
- 20% to 30% Lower energy consumption through solar panels for common areas
- High thermal performance windows
- High SRI pavement on outdoor surfaces
- Use of smart systems and sustainable materials
- Sustainable waste management and mindful architecture



EVERYTHING YOU NEED, AND MORE – THE **SIBANVERSE**

CARE & CONVENIENCE

CONVENIENCE STORE
WHEELCHAIR-ACCESSIBLE RAMPS AND PATHWAYS
VASTU-COMPLIANT HOMES
IGBC PLATINUM-RATED PROJECT
SPACE FOR SERVICES • PANTRY AREA
STAFF LUNCH AREA • STAFF ROOM
STAFF PANTRY • MALE TOILET
FEMALE TOILET • DRIVERS' LOUNGE

INNOVATION & SMART LIVING

SIBAN ENTRANCE FOYER
ART-INSPIRED FOYERS
NATURAL COOLING TOWERS
IBMS - INTEGRATED BUILDING MGMT. SYSTEM
CENTRALISED CHILLED WATER HVAC SYSTEM
AUTOMATED WATER MGMT. SYSTEM
IDCES - INTELLIGENT DESTINATION CONTROL
ELEVATOR SYSTEM
BMS ROOM

LUXURY & EXCLUSIVITY

1 LAKH SQ. FT. BEST-IN-CLASS CLUBHOUSE
BANQUET HALL
DOUBLE-HEIGHT CLUB CLASS LOUNGE
AV ROOM • GUEST ROOM
TERRACE O₂ SITTING AREA
STARGAZING SITTING AREA
DOUBLE-HEIGHT ATRIUM

RECREATION & SOCIAL SPACES

SKY GARDEN • TERRACE SWING AREA
JACUZZI • SPA & SALON
ART & CRAFT ROOM • PET PLAZA



BUSINESS & PRODUCTIVITY

RETAIL PLAZA • MEET & GREET LOUNGES
LIBRARY & CO-WORKING SPACE
WORK-FROM-HOME SPACE • MEETING ROOMS
HIGH-SPEED INTERNET

HYGIENE & WELLNESS

YOGA DECK • WALKING TRACK
OPEN-AIR GYM • PILATES & ZUMBA STUDIO
GYMNASIUM • LAUNDROMAT
MEDICAL ROOM • STRECHER LIFTS

ENTERTAINMENT & LEISURE

PARTY LAWN • MOVIE THEATRE
LIBRARY • TERRACE PARTY AREA
BAR AREA • DISCO FLOOR
BBQ AREA • KID'S PLAY ZONE

ESSENTIAL & UTILITY SPACES

PARCEL ROOM • LETTERBOX ROOM
CONCIERGE/SOCIETY OFFICE
CCTV SURVEILLANCE ROOM
ESTATE/ADMIN OFFICE
JANITOR'S ROOM • FIRE/SERVICE LIFT
4 LEVELS OF BASEMENT PARKING
VALET & MECHANICAL CAR PARKING

SPORTS & OUTDOOR ACTIVITIES

BOX CRICKET • PICKLEBALL COURT • AIR HOCKEY
BADMINTON COURT • BASKETBALL COURT
KICKBOXING AREA • INDOOR GAME ZONE

CONSULTANTS



SCAN FOR RERA



SCAN FOR FLOOR PLAN BROCHURE



SCAN FOR PENTHOUSE BROCHURE



SCAN FOR WEBSITE



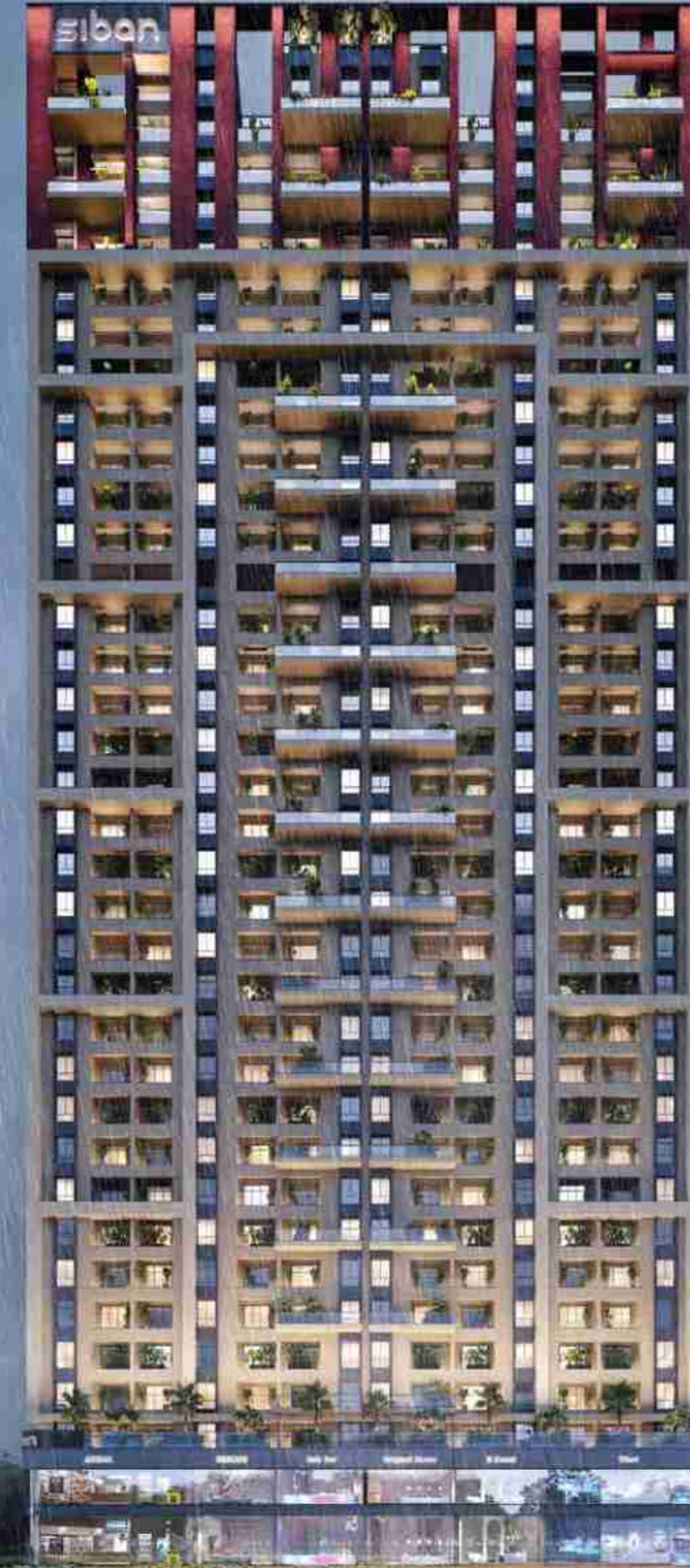
SCAN FOR LOCATION



SCAN FOR CONSTRUCTION UPDATE

MULTIVERSE OF LIFESTYLE RISING SOON

siban



Artistic impression